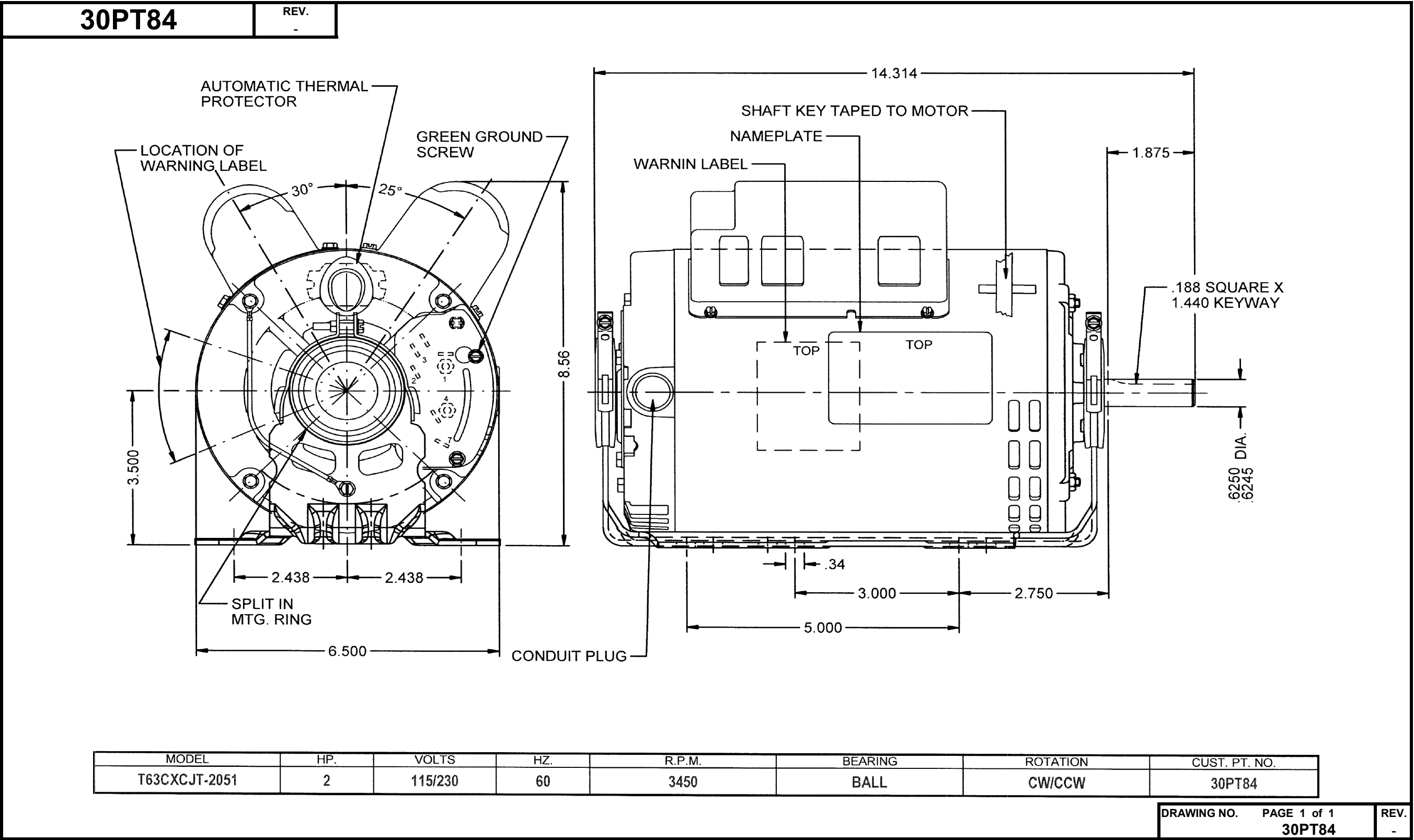


Dimensional Drawing



Dayton Electric Mfg. Co. Lake Forest, IL 60045 USA

Performance Data



30PT84	REV. -							
MOTOR PERFORMANCE								
HP:	2							
Poles:	2							
No. of Speeds:	1							
Volts:	115/230	115	230					
HZ:	60	60	60					
Service Factor:	1.15							
Efficiency:	@ Rated Load	83.30	83.80					
Power Factor:	@ Rated Load	98.70	98.30					
Amps:	@ No Load							
	@ Rated Load	15.79	7.87					
	@ Service Factor	18.42	9.18					
	@ Locked Rotor	84.24	44.26					
RPM:	@ Rated Load	3475	3473					
Ambient (°C):								
Altitude (FASL):								
Torques:	Breakdown	97.1	99.9					
	Locked Rotor	102.02	101.40					
	Pull-Up	99.66	97.93					
	Rated Load	48.34	48.37					
	Service Factor	3.445	3.472					
Watts:	Rated Load	1792	1781					
KVA Code:								
Temperature Rise:	@ Rated Load	14.8	15.3					
	@ Service Factor	19.7	20.1					
Thermal Protector:	Trip Temp (°C)							
Winding Material:	Start (Auxiliary)	CU						
	Run (Main)	CU						
Capacitor(s):	Start (MFD / Volts)							
	No. of Start Capacitors							
	Run (MFD / Volts)							
	No. of Run Capacitors							
LOW SPEED PERFORMANCE DATA:								
HP:								
Poles:								
Volts:								
HZ:								
Efficiency:	@ Rated Load							
Power Factor:	@ Rated Load							
Amps:	@ No Load							
	@ Rated Load							
	@ Service Factor							
	@ Locked Rotor							
Torques:	Break Down							
	Locked Rotor							
	Pull-Up							
	Rated Load							
	Service Factor							
Watts:	@ Rated Load							
Temperature Rise:	@ Rated Load							
	@ Service Factor							
		DRAWING NO. PAGE 1 of 1 30PT84						
		REV. -						

Dayton Electric Mfg. Co. Lake Forest, IL 60045 USA

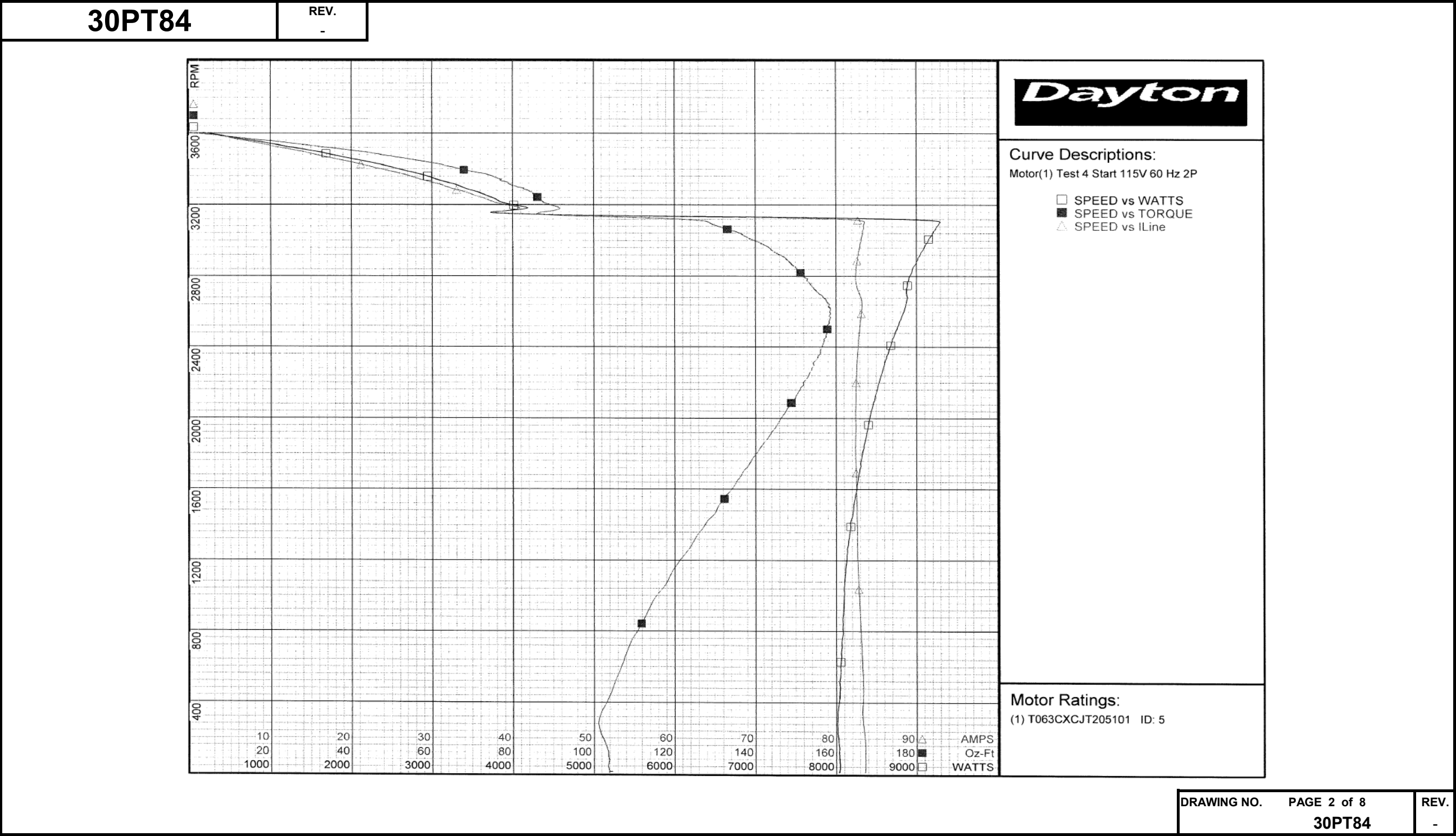
Performance Data



30PT84		REV. -																									
Dayton Manufacturing Company																											
Motor Description				Test Conditions																							
Model:		T063CXCJT205101		Test Type:		Start		Run Cap:		0																	
Motor ID:		5		Test Number:		4		Start Cap:		0μfd																	
Poles:		2		Poles:		2		Environment:		22.8 Deg C 20 % RH 1000 hPa																	
Volts:		115/230		Volts:		115		Tested:		3/8/2014 9:57:10 AM																	
Frequency:		60		Hz:		60		Tested By:		Sharp, Gerald																	
HP:		2		Rotation:				Gear Ratio:		1:1																	
Speed:		3450		Special Cond:				Bearing Friction:		-0.14 Oz-Ft																	
Phase:		1		Speed Conn:				Windage Torque:		-1.08 Oz-Ft																	
Protector:				TestBoard:		Amtps Performance		Fixture #3																			
Special Points										Vline (V)		Iline (A)		Watts		RPM		Tq (Oz-ft)		HP		Eff (%)		PF (%)			
										115.0		83.61		8041		9		104.66		0.011		0.1		83.6			
										115.0		83.61		8040		74		103.81		0.091		0.8		83.6			
PUT OZ-FT										115.0		83.33		8012		281		101.12		0.339		3.2		83.6			
										115.0		83.24		8023		367		102.33		0.448		4.2		83.8			
										115.0		83.19		8059		683		108.11		0.879		8.1		84.2			
										115.0		82.87		8093		966		114.47		1.316		12.1		84.9			
										115.0		82.62		8129		1224		122.05		1.778		16.3		85.6			
										115.0		82.55		8200		1451		129.41		2.236		20.3		86.4			
										115.0		82.49		8272		1657		135.73		2.677		24.1		87.2			
										115.0		82.38		8343		1850		141.66		3.119		27.9		88.1			
										115.0		82.40		8429		2026		147.12		3.549		31.4		89.0			
										115.0		82.48		8521		2188		151.97		3.958		34.6		89.8			
										115.0		82.61		8625		2336		155.44		4.324		37.4		90.8			
										115.0		82.85		8724		2468		157.46		4.625		39.6		91.6			
										115.0		83.16		8829		2590		158.62		4.890		41.3		92.3			
										115.0		82.91		8877		2701		155.75		5.008		42.1		93.1			
										115.0		82.42		8914		2802		151.98		5.070		42.4		94.0			
										115.0		82.66		9017		2894		147.72		5.090		42.1		94.9			
										115.0		83.00		9113		2979		141.70		5.025		41.1		95.5			
										115.0		83.34		9226		3055		134.10		4.878		39.4		96.3			
										115.0		75.45		8217		3125		115.69		4.303		39.1		94.7			
										115.0		40.87		4188		3181		91.57		3.467		61.8		89.1			
										115.0		36.02		3731		3243		86.17		3.326		66.5		90.1			
										115.0		31.97		3375		3299		81.24		3.191		70.5		91.8			
										115.0		27.94		3003		3349		75.91		3.027		75.2		93.5			
										115.0		23.81		2596		3397		67.27		2.721		78.2		94.8			
										115.0		19.64		2187		3440		57.96		2.374		81.0		96.8			
										115.0		15.37		1731		3482		46.74		1.938		83.5		97.9			
										115.0		10.89		1237		3522		32.79		1.375		82.9		98.7			
										115.0		6.34		721		3562		17.41		0.738		76.4		98.9			
										115.0		1.87		164		3602		0.00		0.000		0.0		76.0			
										DRAWING NO.		PAGE 1 of 8		REV.													
										30PT84																	

Dayton Electric Mfg. Co. Lake Forest, IL 60045 USA

Performance Data



Dayton Electric Mfg. Co. Lake Forest, IL 60045 USA

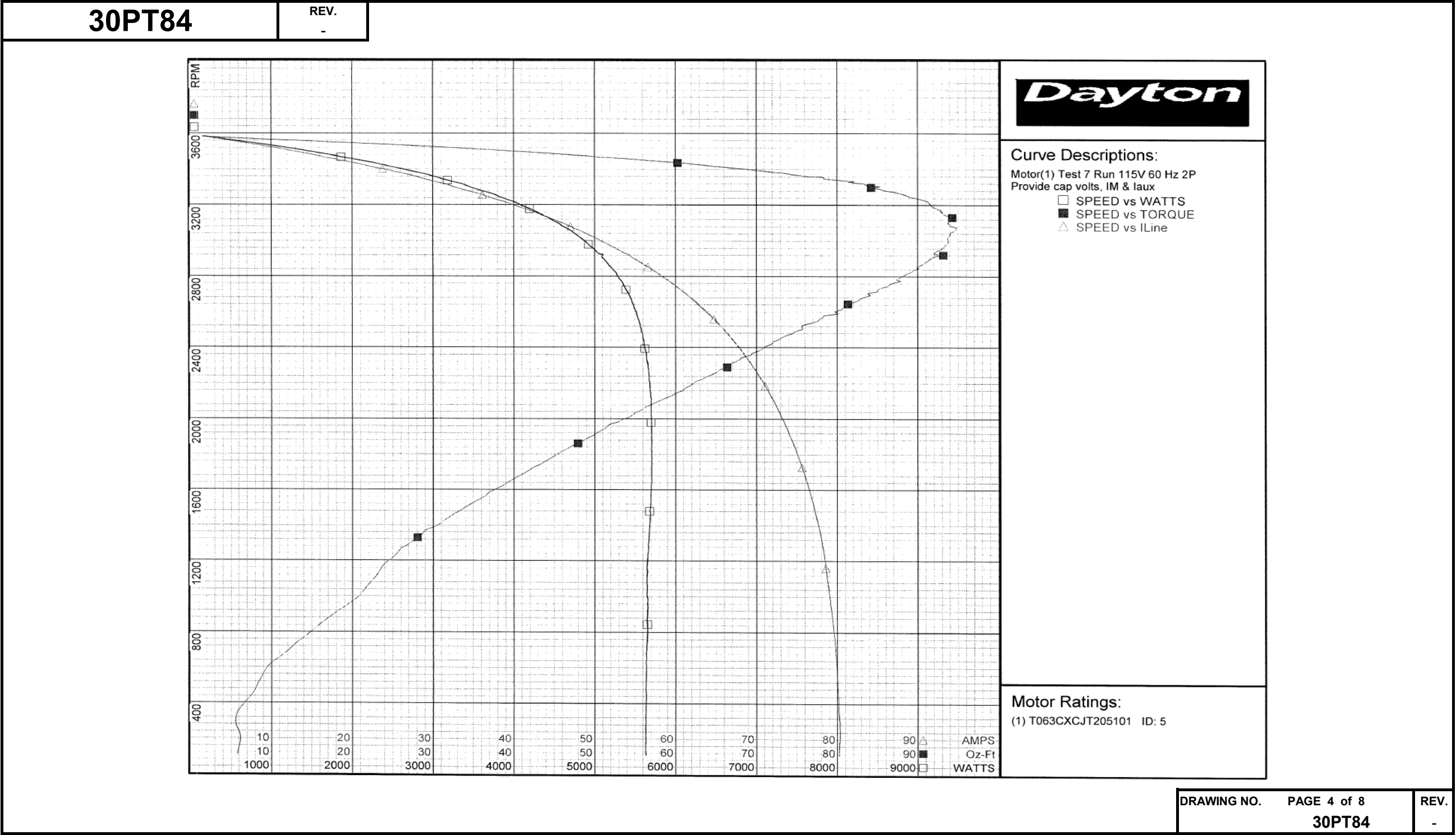
Performance Data



30PT84		REV. -											
Dayton Manufacturing Company													
Motor Description				Test Conditions									
Model:		T063CXCJT205101		Test Type:		Run		Run Cap:		0			
Motor ID:		5		Test Number:		7		Start Cap:		0µfd			
Poles:		2		Poles:		2		Environment:		22.8 Deg C 20 % RH 1000 hPa			
Volts:		115/230		Volts:		115		Tested:		3/8/2014 9:55:02 AM			
Frequency:		60		Hz:		60		Tested By:		Sharp, Gerald			
HP:		2		Rotation:				Gear Ratio:		1:1			
Speed:		3450		Special Cond:		Provide cap volts, IM & Iaux				Bearing Friction:		-0.11 Oz-Ft	
Phase:		1		Speed Conn:				Windage Torque:		-0.91 Oz-Ft			
Protector:		-----		TestBoard:		Amps Performance Fixture #3							
Special Points	Vline (V)	Vaux (V)	Vcap (V)	Iline (A)	Imain (A)	Iaux (A)	Watts	RPM	Tq (Oz-ft)	HP	PF (%)	Cap	
	115.0	191.6	228.4	1.41	3.52	4.258	156	3585	0.00	0.000	95.8	49.4	
	115.0	185.4	214.4	6.57	3.96	4.005	761	3547	19.22	0.811	100.7	49.5	
	115.0	175.4	199.5	11.86	9.26	3.723	1360	3508	36.86	1.539	99.8	49.5	
2 HP	115.0	168.6	189.5	15.66	13.24	3.546	1780	3475	48.35	2.000	98.8	49.6	
48.7 OZ-FT	115.0	168.4	189.2	15.78	13.37	3.540	1793	3474	48.70	2.014	98.8	49.6	
	115.0	167.3	187.4	16.46	14.08	3.509	1867	3467	50.45	2.082	98.6	49.7	
56 OZ-FT	115.0	163.5	182.3	18.44	16.18	3.417	2079	3450	56.00	2.300	98.0	49.7	
3450 RPM	115.0	163.5	182.2	18.45	16.19	3.417	2079	3450	56.02	2.301	98.0	49.7	
2.3 HP	115.0	163.5	182.3	18.44	16.18	3.417	2079	3450	56.00	2.300	98.0	49.7	
	115.0	158.9	175.9	21.02	18.91	3.302	2349	3426	62.46	2.548	97.2	49.8	
	115.0	150.9	165.1	25.57	23.51	3.110	2793	3382	72.12	2.904	95.0	50.0	
	115.0	143.0	155.3	29.61	27.76	2.935	3182	3337	80.81	3.210	93.4	50.1	
	115.0	134.5	145.4	33.54	31.90	2.760	3543	3289	85.45	3.345	91.9	50.4	
	115.0	126.2	136.3	37.55	36.13	2.595	3890	3235	90.06	3.469	90.1	50.5	
	115.0	118.2	128.4	41.35	40.15	2.458	4199	3178	92.41	3.496	88.3	50.8	
	115.0	110.5	121.3	44.92	43.92	2.333	4462	3118	94.15	3.495	86.4	51.0	
BDT OZ-FT	115.0	105.4	116.7	47.31	46.52	2.250	4647	3072	94.82	3.467	85.4	51.1	
	115.0	103.3	114.9	48.35	47.62	2.217	4720	3052	94.37	3.428	84.9	51.2	
	115.0	96.0	109.3	51.65	51.11	2.111	4925	2980	93.53	3.318	82.9	51.2	
	115.0	88.7	104.4	54.81	54.44	2.006	5105	2902	91.59	3.164	81.0	51.0	
	115.0	82.3	100.6	57.76	57.57	1.947	5270	2818	88.85	2.980	79.3	51.3	
	115.0	75.4	97.7	60.61	60.57	1.888	5388	2725	85.04	2.759	77.3	51.3	
	115.0	69.0	95.5	63.24	63.37	1.844	5489	2623	80.73	2.521	75.5	51.2	
	115.0	62.7	94.2	65.74	66.02	1.814	5566	2512	75.63	2.261	73.6	51.1	
	115.0	56.8	93.6	67.95	68.37	1.802	5623	2393	70.78	2.016	72.0	51.1	
	115.0	51.3	93.8	70.04	70.60	1.806	5667	2262	65.13	1.753	70.4	51.1	
	115.0	46.5	94.7	71.80	72.48	1.827	5688	2128	59.42	1.506	68.9	51.2	
	115.0	41.3	96.2	73.42	74.22	1.854	5700	1980	52.86	1.246	67.5	51.1	
	115.0	36.6	97.7	74.83	75.74	1.884	5700	1828	46.52	1.012	66.2	51.2	
	115.0	32.2	99.6	76.16	77.17	1.920	5705	1655	39.81	0.784	65.1	51.1	
	115.0	27.9	101.7	77.22	78.33	1.956	5681	1481	33.37	0.588	64.0	51.0	
	115.0	23.6	103.7	78.13	79.34	1.987	5659	1288	26.90	0.412	63.0	50.8	
	115.0	18.8	106.8	78.83	80.14	2.034	5646	1073	22.17	0.283	62.3	50.5	
	115.0	15.7	110.2	79.46	80.86	2.099	5651	845	16.09	0.162	61.8	50.5	
	115.0	12.7	112.7	79.93	81.39	2.139	5642	603	9.55	0.069	61.4	50.3	
	115.0	10.2	115.4	80.20	81.74	2.189	5635	348	5.82	0.024	61.1	50.3	
DRAWING NO.												PAGE 3 of 8	REV.
30PT84												-	

Dayton Electric Mfg. Co. Lake Forest, IL 60045 USA

Performance Data



Dayton Electric Mfg. Co. Lake Forest, IL 60045 USA

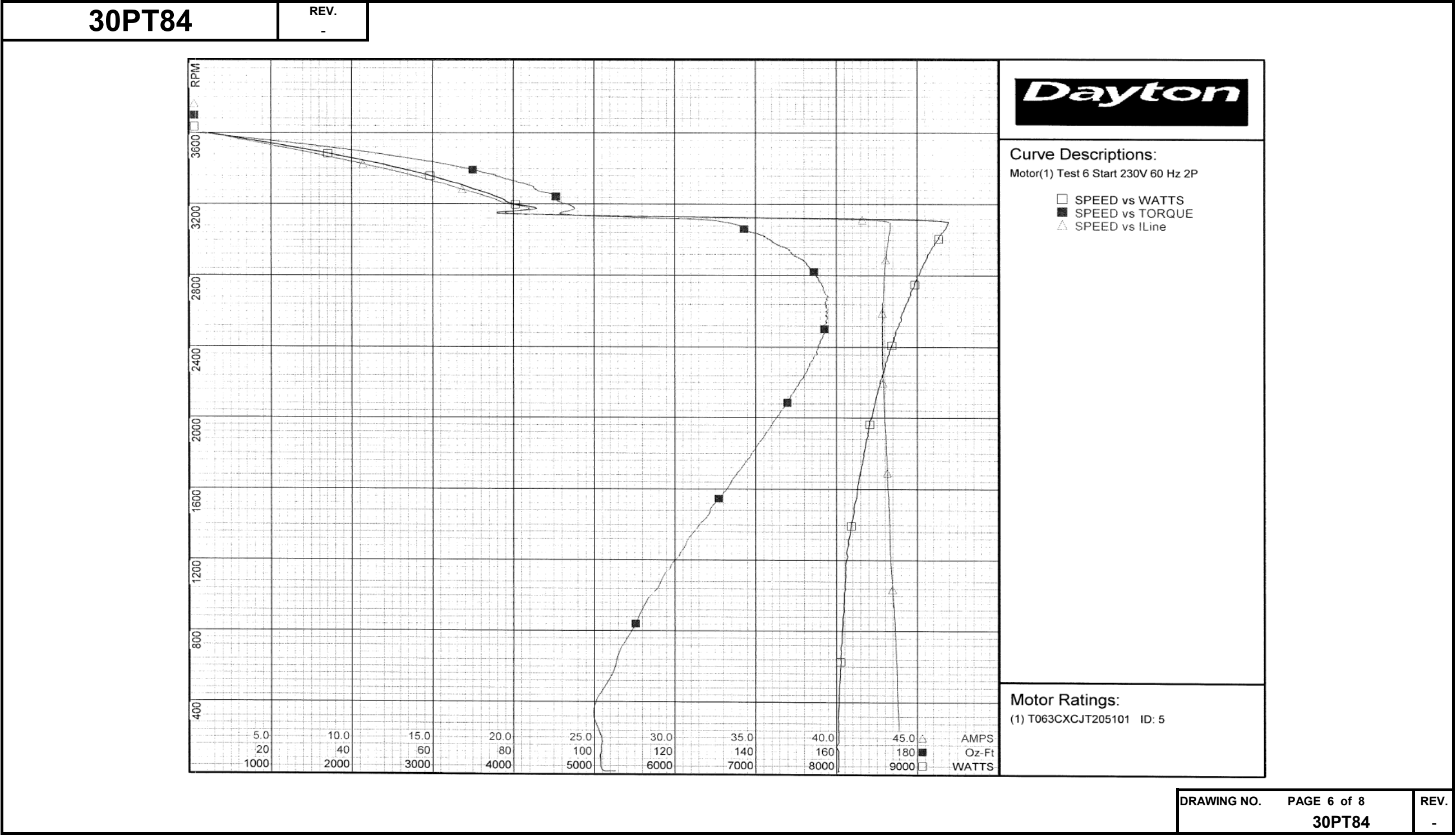
Performance Data



30PT84		REV. -							
Dayton Manufacturing Company									
Motor Description				Test Conditions					
Model: T063CXCJT205101		Test Type: Start		Run Cap: 0					
Motor ID: 5		Test Number: 6		Start Cap: 0µfd					
Poles: 2		Poles: 2		Environment: 22.6 Deg C 20 % RH 999 hPa					
Volts: 115/230		Volts: 230		Tested: 3/8/2014 8:44:37 AM					
Frequency: 60		Hz: 60		Tested By: Sharp, Gerald					
HP: 2		Rotation:		Gear Ratio: 1:1					
Speed: 3450		Special Cond:		Bearing Friction: -0.11 Oz-Ft					
Phase: 1		Speed Conn:		Windage Torque: -1.10 Oz-Ft					
Protector:		TestBoard:		Amps Performance		Fixture #3			
Special Points	Vline (V)	Iline (A)	Watts	RPM	Tq (Oz-ft)	HP	Eff (%)	PF (%)	
	230.0	43.99	8026	9	105.20	0.011	0.1	79.3	
	230.0	43.88	8021	74	101.55	0.090	0.8	79.5	
PUT OZ-FT	230.0	43.82	8018	337	99.86	0.400	3.7	79.6	
	230.0	43.79	8023	366	99.92	0.436	4.1	79.7	
	230.0	43.69	8057	680	106.22	0.860	8.0	80.2	
	230.0	43.51	8092	965	112.88	1.297	12.0	80.9	
	230.0	43.35	8137	1219	120.97	1.756	16.1	81.6	
	230.0	43.27	8205	1450	128.17	2.212	20.1	82.5	
	230.0	43.15	8276	1657	134.36	2.650	23.9	83.4	
	230.0	43.06	8358	1849	140.49	3.092	27.6	84.4	
	230.0	42.97	8449	2026	145.99	3.520	31.1	85.5	
	230.0	42.90	8536	2184	150.50	3.913	34.2	86.5	
	230.0	42.85	8630	2336	154.30	4.290	37.1	87.6	
	230.0	42.85	8732	2468	156.65	4.602	39.3	88.6	
	230.0	42.84	8813	2590	157.76	4.865	41.2	89.4	
	230.0	42.89	8913	2702	157.06	5.052	42.3	90.4	
	230.0	42.97	9021	2804	155.28	5.183	42.9	91.3	
	230.0	43.07	9121	2896	150.96	5.205	42.6	92.1	
	230.0	43.18	9214	2979	144.83	5.137	41.6	92.8	
	230.0	43.32	9336	3055	137.50	5.001	40.0	93.7	
	230.0	35.21	7394	3122	114.69	4.263	43.0	91.3	
	230.0	20.88	4264	3180	95.06	3.599	63.0	88.8	
	230.0	18.37	3792	3242	90.62	3.498	68.8	89.8	
	230.0	16.27	3428	3298	85.06	3.340	72.7	91.6	
	230.0	14.17	3039	3350	76.89	3.066	75.3	93.3	
	230.0	12.10	2634	3396	69.15	2.796	79.2	94.7	
	230.0	9.92	2199	3440	58.83	2.410	81.7	96.4	
	230.0	7.77	1744	3482	46.90	1.944	83.2	97.6	
	230.0	5.52	1251	3522	33.45	1.402	83.6	98.5	
	230.0	3.20	726	3562	17.70	0.751	77.2	98.7	
	230.0	0.88	154	3601	0.00	0.000	0.0	76.2	
DRAWING NO. PAGE 5 of 8							REV.		
30PT84							-		

Dayton Electric Mfg. Co. Lake Forest, IL 60045 USA

Performance Data



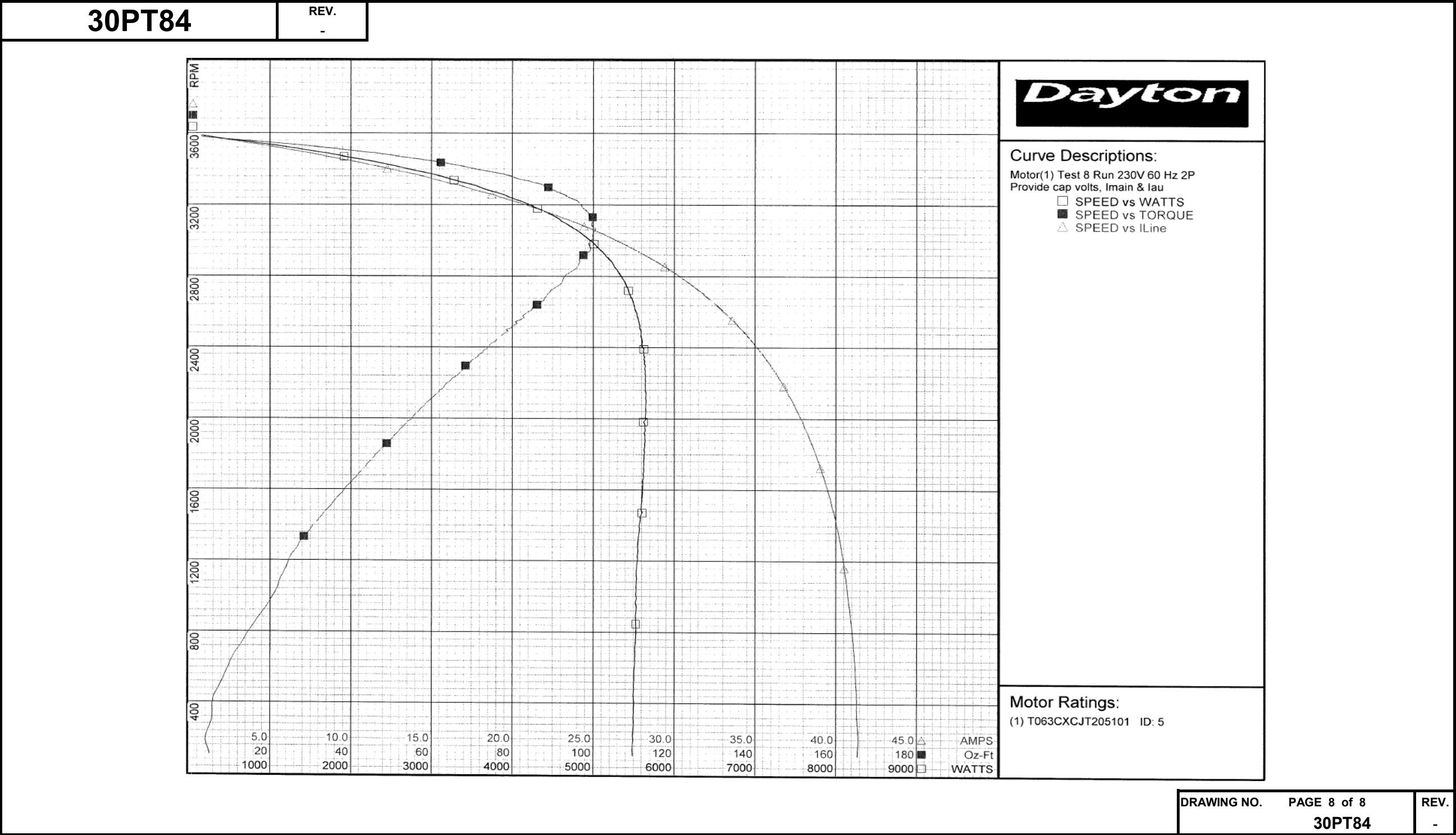
Performance Data



30PT84		REV. -											
Dayton Manufacturing Company													
Motor Description				Test Conditions									
Model:		T063CXCJT205101		Test Type:		Run		Run Cap:		0			
Motor ID:		5		Test Number:		8		Start Cap:		0μfd			
Poles:		2		Poles:		2		Environment:		22.3 Deg C 20 % RH 998 hPa			
Volts:		115/230		Volts:		230		Tested:		3/8/2014 7:49:28 AM			
Frequency:		60		Hz:		60		Tested By:		Sharp, Gerald			
HP:		2		Rotation:				Gear Ratio:		1:1			
Speed:		3450		Special Cond:		Provide cap volts, Imain & Iau		Bearing Friction:		-0.19 Oz-Ft			
Phase:		1		Speed Conn:				Windage Torque:		-1.40 Oz-Ft			
Protector:				TestBoard:		Amtps Performance Fixture #3							
Special Points	Vline (V)	Vaux (V)	Vcap (V)	Iline (A)	Imain (A)	Iaux (A)	Watts	RPM	Tq (Oz-ft)	HP	PF (%)	Cap	
	230.0	218.9	227.5	0.75	3.79	4.245	164	3586	0.00	0.000	94.5	49.5	
	230.0	222.7	214.0	3.40	2.28	3.997	783	3548	19.27	0.814	100.2	49.6	
	230.0	221.4	199.9	6.08	3.91	3.734	1390	3509	37.38	1.561	99.5	49.6	
48.7 OZ-FT	230.0	219.9	190.9	7.93	5.72	3.575	1793	3480	48.70	2.017	98.4	49.7	
2 HP	230.0	220.0	191.3	7.85	5.65	3.582	1778	3481	48.27	2.000	98.4	49.7	
	230.0	219.8	188.3	8.49	6.30	3.530	1920	3469	51.97	2.146	98.3	49.7	
56 OZ-FT	230.0	219.0	184.9	9.21	7.05	3.469	2071	3457	56.00	2.305	97.8	49.8	
2.3 HP	230.0	219.0	185.0	9.19	7.03	3.471	2066	3458	55.87	2.300	97.8	49.8	
3450 RPM	230.0	218.7	182.9	9.64	7.51	3.435	2164	3450	58.19	2.390	97.6	49.8	
	230.0	217.4	176.8	10.90	8.87	3.328	2424	3428	64.55	2.634	96.7	49.9	
	230.0	214.8	166.8	13.18	11.22	3.146	2870	3384	74.62	3.006	94.7	50.0	
	230.0	211.8	156.8	15.34	13.58	2.966	3280	3338	83.03	3.300	93.0	50.2	
	230.0	208.1	147.1	17.45	15.91	2.791	3656	3289	89.45	3.502	91.1	50.3	
	230.0	204.7	138.3	19.50	18.14	2.629	4005	3237	94.62	3.646	89.3	50.4	
	230.0	200.7	130.3	21.43	20.26	2.480	4310	3180	97.53	3.692	87.4	50.5	
	230.0	196.6	122.4	23.35	22.38	2.340	4586	3119	100.46	3.731	85.4	50.7	
BDT OZ-FT	230.0	192.8	116.9	24.80	24.01	2.236	4752	3068	100.53	3.672	83.3	50.7	
	230.0	192.2	115.7	25.16	24.40	2.212	4808	3053	100.43	3.650	83.1	50.7	
	230.0	187.8	109.5	26.87	26.30	2.101	5011	2981	98.84	3.507	81.1	50.9	
	230.0	183.4	104.4	28.48	28.10	2.006	5185	2903	96.72	3.343	79.1	51.0	
	230.0	178.6	100.1	30.02	29.81	1.926	5318	2818	94.09	3.157	77.0	51.0	
	230.0	173.9	96.6	31.52	31.49	1.861	5436	2721	89.48	2.899	75.0	51.1	
	230.0	169.2	94.3	32.84	32.96	1.820	5511	2622	84.86	2.649	73.0	51.2	
	230.0	164.8	92.7	34.07	34.34	1.793	5573	2511	79.83	2.386	71.1	51.3	
	230.0	160.3	92.1	35.21	35.63	1.782	5624	2391	73.61	2.095	69.4	51.4	
	230.0	156.0	92.1	36.22	36.77	1.783	5640	2266	67.52	1.821	67.7	51.4	
	230.0	151.8	92.8	37.12	37.80	1.797	5647	2128	60.89	1.543	66.2	51.4	
	230.0	146.9	94.0	37.93	38.74	1.818	5620	1984	54.18	1.279	64.4	51.3	
	230.0	143.8	95.4	38.65	39.56	1.845	5625	1827	47.48	1.033	63.3	51.3	
	230.0	139.9	97.1	39.32	40.34	1.880	5608	1652	40.50	0.797	62.0	51.4	
	230.0	136.9	98.8	39.90	41.01	1.918	5604	1471	33.42	0.585	61.1	51.5	
	230.0	133.2	100.9	40.30	41.51	1.942	5549	1295	27.20	0.419	59.9	51.0	
	230.0	129.1	103.9	40.65	41.96	1.983	5531	1078	22.23	0.285	59.2	50.6	
	230.0	125.2	107.1	40.97	42.36	2.048	5525	847	16.17	0.163	58.6	50.7	
	230.0	121.9	109.6	41.20	42.67	2.090	5508	606	9.75	0.070	58.1	50.6	
	230.0	118.7	112.1	41.29	42.83	2.134	5498	349	5.73	0.024	57.9	50.5	
DRAWING NO.												PAGE 7 of 8	REV.
30PT84													-

Dayton Electric Mfg. Co. Lake Forest, IL 60045 USA

Performance Data

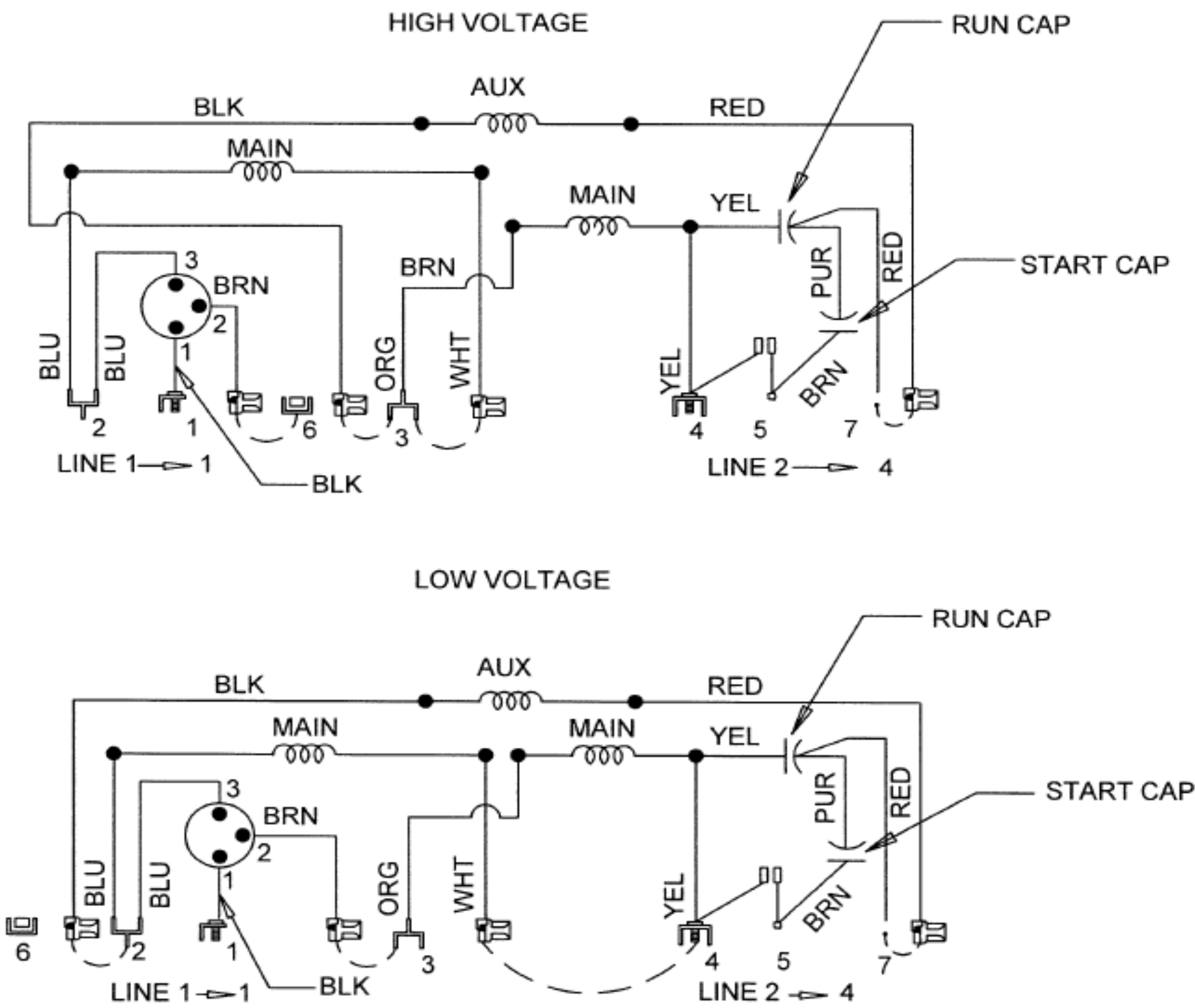


Wiring Diagram



30PT84

REV.
1

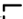
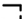
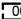
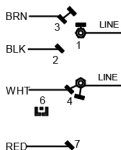
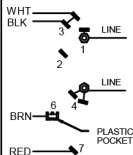


ROTATION: CCW SWITCH END REVERSIBLE
TO REVERSE ROTATION INTERCHANGE
RED AND BLACK LEADS

DRAWING NO.

30PT84

REV.
1

Dayton[®]**INDUSTRIAL MOTOR**Part
No**30PT84****HP: 2.0****PH: 1****VOLTS: 115/230****HZ: 60****AMPS: 17.3/8.7****FR: 56H****RPM: 3450****INS CL: B****DUTY: CONT****AMB: 40° C****SF: 1.15****SFA: 19.9/10.0****KVA CODE: D****ENCL: ODP****THERMALLY PROTECTED: AUTO**MFG. NO.  PROT. CODE:  **00540**AVG. F.L.
EFF. **82.9****MTR REF: T63CXCJT-2051****USABLE FOR 208 V AT 1.0 SF****NEMA**
Premium[™]**Disconnect Power Before Making Any
Electrical Connections or Changes****CONNECTIONS****LOW VOLTAGE****HIGH VOLTAGE****ROTATION CCW LEAD END REVERSIBLE
TO REVERSE ROTATION INTERCHANGE
BLACK AND RED LEADS****E37403****258501****Mfd for Dayton Electric Mfg. Co., Lake Forest, IL 60045 USA****Made in Mexico**