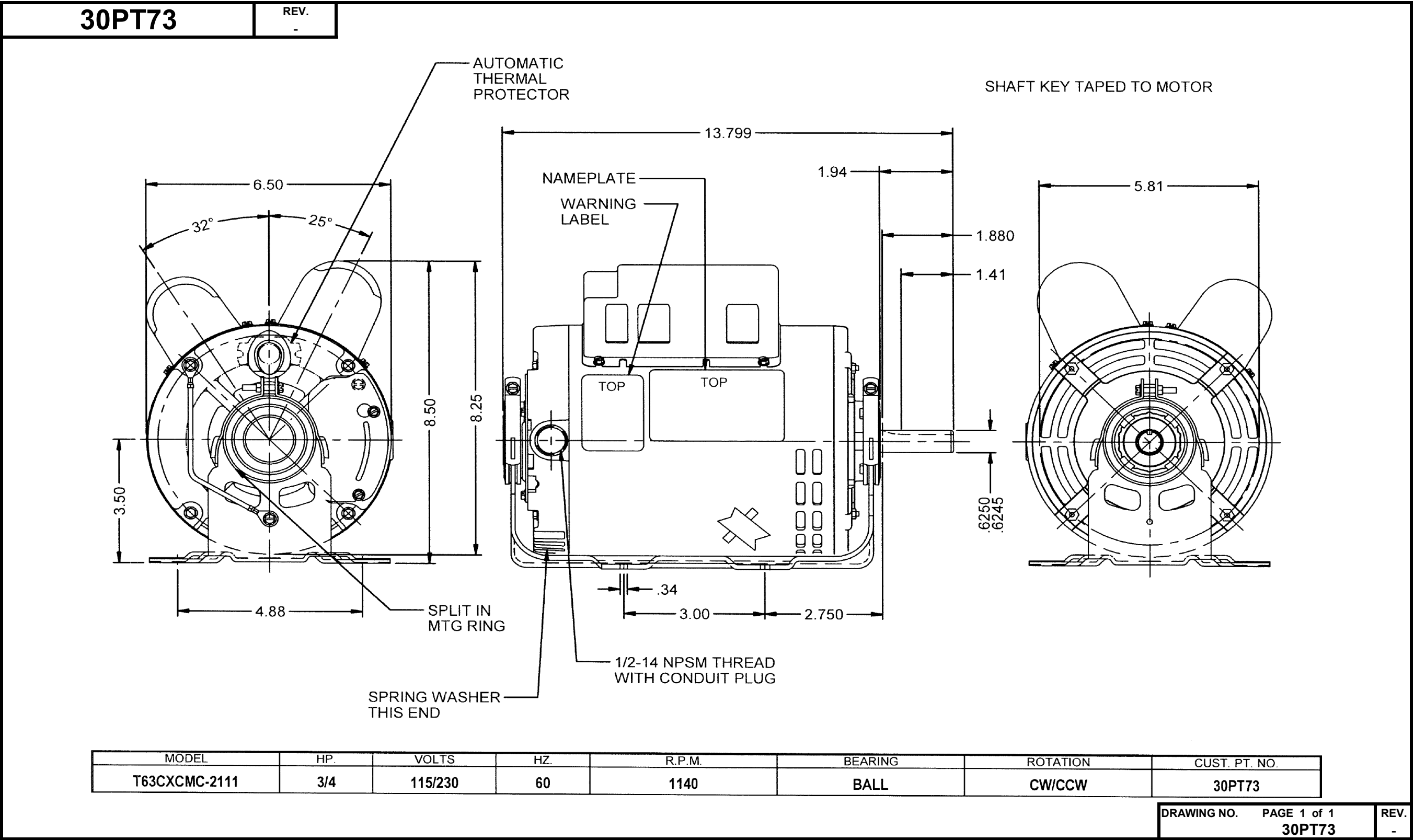


Dimensional Drawing



Dayton Electric Mfg. Co. Lake Forest, IL 60045 USA

Performance Data



30PT73		REV. -							
MOTOR PERFORMANCE									
HP:	3/4								
Poles:	6								
No. of Speeds:	1								
Volts:	115/230		115	230					
HZ:	60		60	60					
Service Factor:	1.15								
Efficiency:	@ Rated Load		79.30	78.20					
Power Factor:	@ Rated Load		96.20	95.60					
Amps:	@ No Load								
	@ Rated Load		6.38	3.25					
	@ Service Factor		7.28	3.72					
	@ Locked Rotor		51.54	24.17					
RPM:	@ Rated Load		1166	1166					
Ambient (°C):									
Altitude (FASL):									
Torques:	Breakdown		106.1	107.4					
	Locked Rotor		180.3	146.98					
	Pull-Up		180.2	146.98					
	Rated Load		54.05	54.05					
	Service Factor		4.075	4.063					
Watts:	Rated Load		706	715.7					
KVA Code:									
Temperature Rise:	@ Rated Load		35.4	43.8					
	@ Service Factor		38.1	45.7					
Thermal Protector:	Trip Temp (°C)								
Winding Material:	Start (Auxiliary)	CU							
	Run (Main)	CU							
Capacitor(s):	Start (MFD / Volts)	496/ 165V							
	No. of Start Capacitors								
	Run (MFD / Volts)	60/ 280V							
	No. of Run Capacitors								
LOW SPEED PERFORMANCE DATA:									
HP:									
Poles:									
Volts:									
HZ:									
Efficiency:	@ Rated Load								
Power Factor:	@ Rated Load								
Amps:	@ No Load								
	@ Rated Load								
	@ Service Factor								
	@ Locked Rotor								
Torques:	Bead Down								
	Locked Rotor								
	Pull-Up								
	Rated Load								
	Service Factor								
Watts:	@ Rated Load								
Temperature Rise:	@ Rated Load								
	@ Service Factor								
DRAWING NO. PAGE 1 of 1					30PT73		REV. -		

Dayton Electric Mfg. Co. Lake Forest, IL 60045 USA

Performance Data



30PT73		REV. -							
Dayton Manufacturing Company									
Motor Description				Test Conditions					
Model: T063CMC2111				Test Type: Start		Run Cap: 0			
Motor ID: 1				Test Number: 4		Start Cap: 0µfd			
Poles: 6				Poles: 6		Environment: 22.8 Deg C 21 % RH 996 hPa			
Volts: 115/230				Volts: 115		Tested: 2/19/2014 9:21:43 AM			
Frequency: 60				Hz: 60		Tested By: Sharp, Gerald			
HP: 3/4				Rotation:		Gear Ratio: 1:1			
Speed: 1140				Special Cond:		Bearing Friction: 0.10 Oz-Ft			
Phase: 1				Speed Conn:		Windage Torque: -0.14 Oz-Ft			
Protector:				TestBoard:		Amps Performance		Fixture #1	
Special Points		Vline (V)	Iline (A)	Watts	RPM	Tq (Oz-ft)	HP	Eff (%)	PF (%)
		115.0	51.78	5471	14	163.9	0.027	0.4	91.9
PUT OZ-FT		115.0	51.75	5467	12	161.7	0.023	0.3	91.9
		115.0	51.75	5470	41	168.4	0.082	1.1	91.9
		115.0	51.89	5477	143	163.2	0.279	3.8	91.8
		115.0	52.05	5482	240	174.3	0.499	6.8	91.6
		115.0	52.34	5502	330	182.7	0.717	9.7	91.4
		115.0	52.92	5557	410	185.2	0.904	12.1	91.3
		115.0	52.97	5565	485	189.0	1.092	14.6	91.4
		115.0	52.58	5513	555	195.9	1.294	17.5	91.2
		115.0	52.20	5448	619	201.5	1.485	20.3	90.8
		115.0	51.86	5384	678	204.9	1.653	22.9	90.3
		115.0	51.57	5323	730	206.3	1.794	25.1	89.8
		115.0	51.27	5255	779	206.5	1.916	27.2	89.1
		115.0	50.95	5172	823	202.2	1.982	28.6	88.3
		115.0	50.56	5085	865	197.4	2.032	29.8	87.5
		115.0	50.16	4992	901	189.2	2.029	30.3	86.5
		115.0	49.71	4902	934	178.6	1.985	30.2	85.7
		115.0	49.33	4821	964	167.2	1.919	29.7	85.0
		115.0	48.80	4726	992	153.7	1.816	28.7	84.2
		115.0	17.12	1574	1010	99.2	1.193	56.6	79.9
		115.0	16.77	1578	1038	101.8	1.259	59.5	81.8
		115.0	15.52	1507	1062	103.0	1.303	64.5	84.4
		115.0	14.19	1421	1084	101.5	1.310	68.7	87.1
		115.0	12.78	1320	1103	97.9	1.285	72.6	89.8
		115.0	11.35	1204	1119	93.1	1.241	76.9	92.2
		115.0	9.89	1075	1135	85.0	1.149	79.7	94.6
		115.0	8.38	932	1149	75.0	1.026	82.1	96.7
		115.0	6.80	772	1162	61.8	0.855	82.7	98.7
		115.0	5.25	600	1175	46.3	0.647	80.5	99.4
		115.0	3.97	443	1188	29.8	0.422	71.1	97.1
		115.0	2.16	175	1200	0.5	0.007	2.8	70.7
		115.0	2.04	154	1201	0.0	0.000	0.0	65.5

DRAWING NO. PAGE 1 of 8

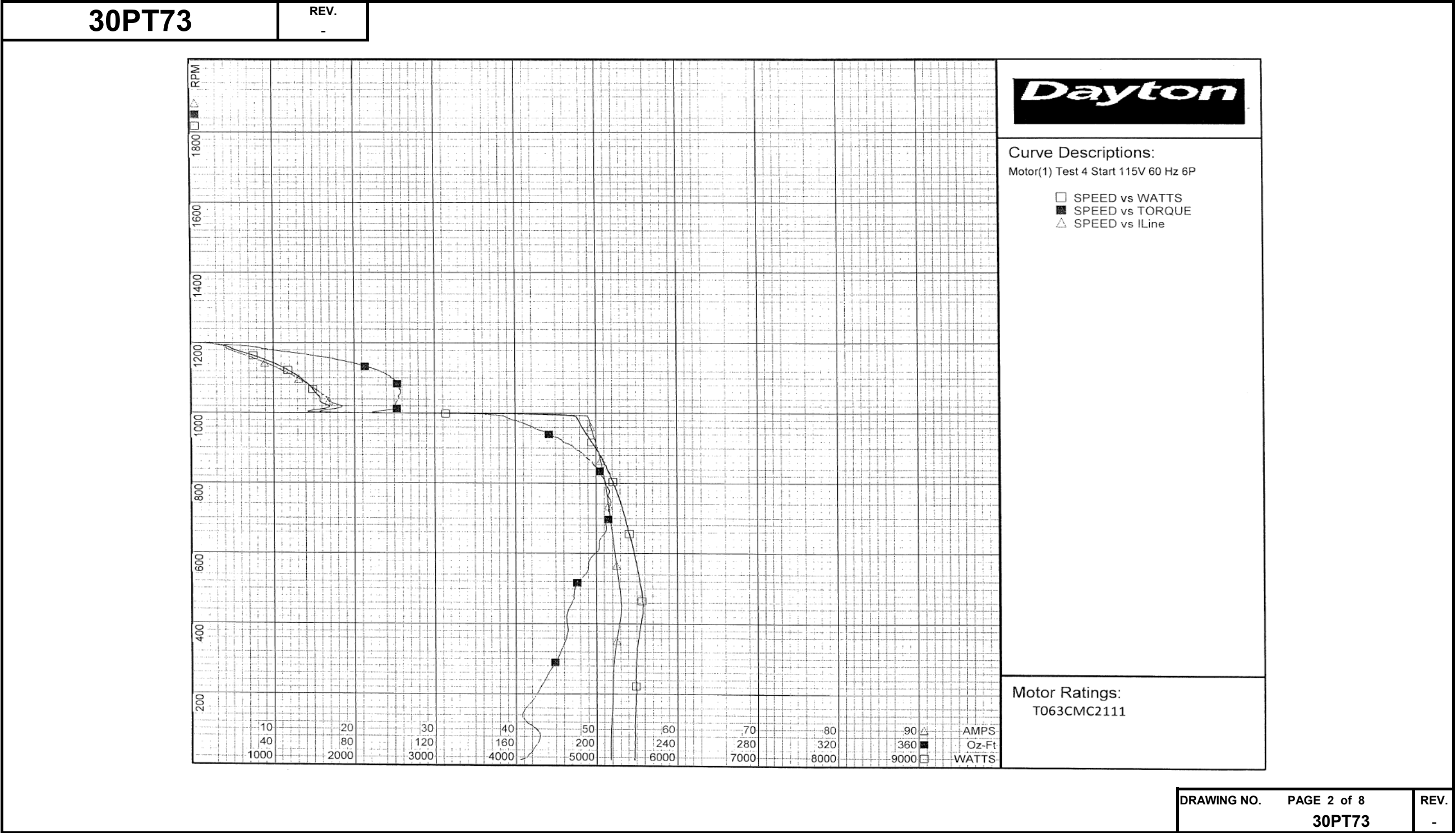
30PT73

REV.
-

DRAWING NO.	PAGE 1 of 8	REV.
	30PT73	-

Dayton Electric Mfg. Co. Lake Forest, IL 60045 USA

Performance Data



Dayton Electric Mfg. Co. Lake Forest, IL 60045 USA

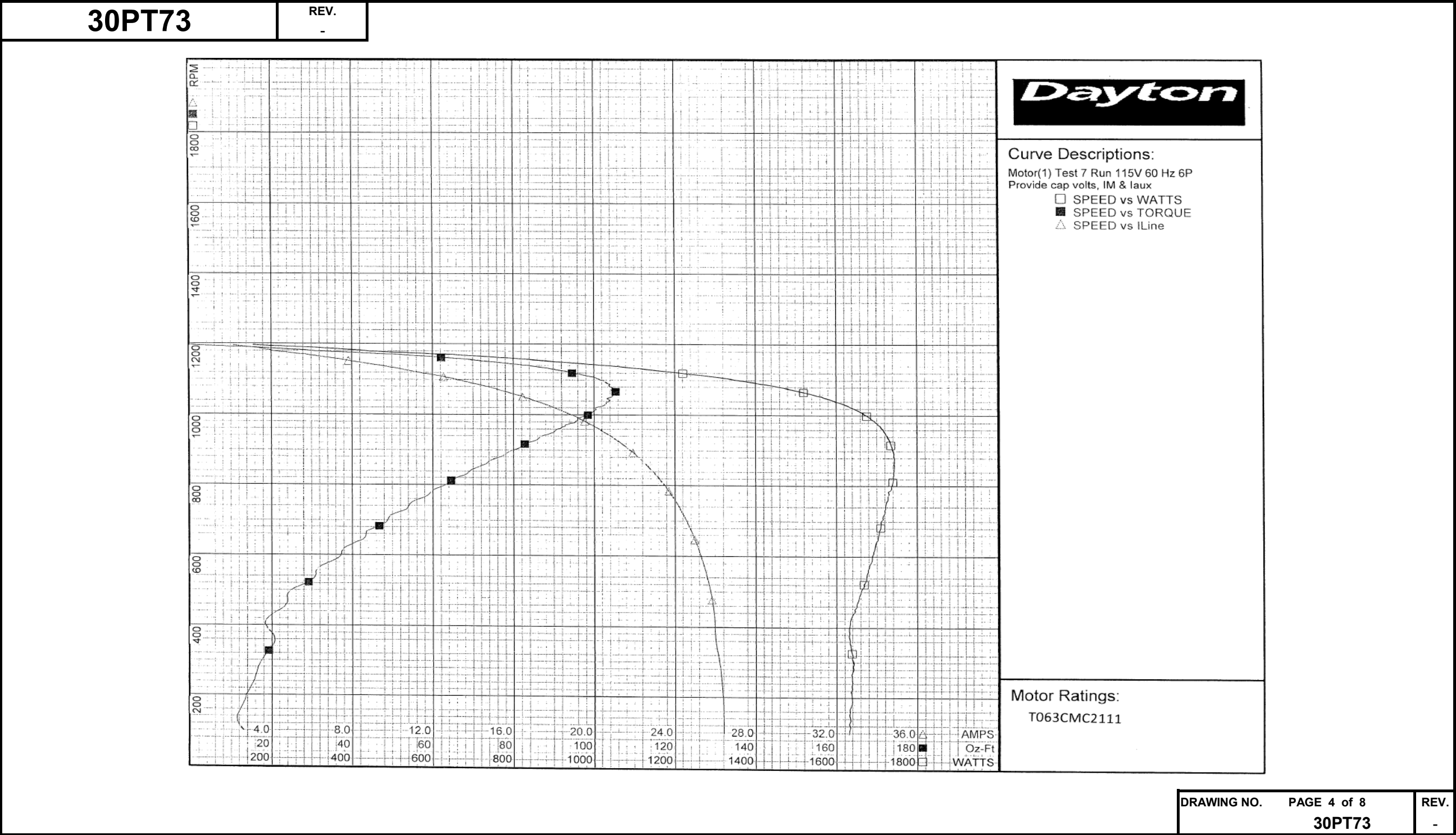
Performance Data



30PT73		REV. -											
Dayton Manufacturing Company													
Motor Description				Test Conditions									
Model: T063CMC2111		Test Type: Run		Run Cap: 0									
Motor ID: 1		Test Number: 7		Start Cap: 0µfd									
Poles: 6		Poles: 6		Environment: 22.3 Deg C 20 % RH 995 hPa									
Volts: 115/230		Volts: 115		Tested: 2/19/2014 8:42:21 AM									
Frequency: 60		Hz: 60		Tested By: Sharp, Gerald									
HP: 3/4		Rotation:		Gear Ratio: 1:1									
Speed: 1140		Special Cond: Provide cap volts, IM & Iaux		Bearing Friction: -0.26 Oz-Ft									
Phase: 1		Speed Conn:		Windage Torque: -0.56 Oz-Ft									
Protector:		TestBoard:		Amps Performance Fixture #1									
Special Points	Vline (V)	Vaux (V)	Vcap (V)	Iline (A)	Imain (A)	Iaux (A)	Watts	RPM	Tq (Oz-ft)	HP	PF (%)	Cap	
	115.0	174.3	226.0	2.10	3.82	5.330	155.3	1196	0.00	0.000	64.4	62.6	
	115.0	170.7	216.9	3.52	2.61	5.117	364.9	1185	21.94	0.310	90.1	62.6	
	115.0	158.1	195.7	5.09	2.90	4.590	575.1	1173	44.30	0.618	98.2	62.2	
0.75 HP	115.0	151.1	187.5	5.90	3.80	4.361	676.0	1168	53.96	0.750	99.6	61.7	
55.3 OZ-FT	115.0	150.2	186.3	6.03	3.97	4.328	691.8	1167	55.30	0.768	99.7	61.6	
63.6 OZ-FT	115.0	144.3	179.9	6.85	4.98	4.149	782.0	1161	63.41	0.876	99.2	61.2	
	115.0	144.1	179.7	6.87	5.01	4.145	784.3	1160	63.60	0.879	99.2	61.2	
	115.0	134.4	168.7	8.50	6.90	3.870	952.5	1147	77.44	1.057	97.5	60.9	
1140 RPM	115.0	130.2	163.8	9.28	7.81	3.753	1028.9	1140	83.22	1.129	96.4	60.8	
	115.0	125.1	158.4	10.15	8.83	3.628	1110.0	1132	88.63	1.194	95.1	60.8	
	115.0	116.1	149.2	11.79	10.68	3.422	1248.3	1115	96.52	1.282	92.1	60.8	
	115.0	107.4	141.2	13.28	12.47	3.254	1365.1	1098	102.39	1.339	89.4	61.1	
	115.0	98.8	134.2	14.69	14.16	3.112	1463.6	1080	103.79	1.334	86.7	61.5	
BDT OZ-FT	115.0	92.4	129.6	15.70	15.39	3.025	1526.1	1064	105.60	1.338	84.5	61.9	
	115.0	90.7	128.5	15.96	15.71	3.001	1541.7	1060	104.94	1.324	84.0	61.9	
	115.0	83.3	124.1	17.16	17.16	2.923	1603.5	1038	103.70	1.281	81.2	62.5	
	115.0	76.2	120.6	18.26	18.50	2.862	1652.9	1015	100.48	1.214	78.7	62.9	
	115.0	69.7	118.5	19.25	19.71	2.826	1687.1	989	95.86	1.128	76.2	63.3	
	115.0	63.7	116.9	20.18	20.86	2.805	1714.8	962	91.87	1.052	73.9	63.7	
	115.0	58.2	116.2	21.01	21.87	2.796	1730.2	932	86.16	0.956	71.6	63.8	
	115.0	53.2	116.1	21.77	22.81	2.799	1739.8	900	80.19	0.859	69.5	63.9	
	115.0	48.5	116.4	22.47	23.69	2.807	1743.6	866	73.74	0.760	67.5	64.0	
	115.0	44.5	117.3	23.09	24.46	2.827	1741.1	828	67.86	0.669	65.6	63.9	
	115.0	41.1	118.3	23.65	25.17	2.852	1734.0	788	60.68	0.569	63.7	64.0	
	115.0	38.0	119.6	24.15	25.80	2.878	1721.6	744	54.25	0.480	62.0	63.8	
	115.0	35.3	121.0	24.60	26.35	2.910	1709.5	697	48.70	0.404	60.4	63.8	
	115.0	33.5	122.3	24.98	26.85	2.947	1702.3	646	42.98	0.331	59.3	63.9	
	115.0	31.5	123.8	25.33	27.29	2.982	1688.2	592	36.71	0.259	58.0	63.9	
	115.0	29.7	125.0	25.62	27.68	3.004	1673.4	534	30.62	0.195	56.8	63.7	
	115.0	27.6	126.0	25.85	28.00	3.009	1651.4	471	23.93	0.134	55.6	63.3	
	115.0	25.4	127.3	25.97	28.20	3.008	1632.3	404	18.34	0.088	54.6	62.7	
	115.0	26.0	130.2	26.09	28.38	3.063	1636.4	333	19.81	0.079	54.5	62.4	
	115.0	26.9	132.1	26.28	28.63	3.112	1638.5	257	16.13	0.049	54.2	62.5	
	115.0	27.2	133.2	26.40	28.77	3.143	1636.1	176	12.97	0.027	53.9	62.6	
DRAWING NO. PAGE 3 of 8												REV.	
30PT73												-	

Dayton Electric Mfg. Co. Lake Forest, IL 60045 USA

Performance Data



Performance Data



30PT73		REV.
		-

Dayton Manufacturing Company									
Motor Description				Test Conditions					
Model: T063CMC2111				Test Type: Start		Run Cap: 0			
Motor ID: 1				Test Number: 6		Start Cap: 0µfd			
Poles: 6				Poles: 6		Environment: 23.2 Deg C 23 % RH 995 hPa			
Volts: 115/230				Volts: 230		Tested: 2/19/2014 12:13:50 PM			
Frequency: 60				Hz: 60		Tested By: Sharp, Gerald			
HP: 3/4				Rotation:		Gear Ratio: 1:1			
Speed: 1140				Special Cond:		Bearing Friction: -0.02 Oz-Ft			
Phase: 1				Speed Conn:		Windage Torque: -0.22 Oz-Ft			
Protector:				TestBoard:		Amps Performance Fixture #1			

Special Points	Vline(V)	Iline(A)	Watts	RPM	Tq(Oz-ft)	HP	Eff(%)	PF(%)
	230.0	24.10	4698	10	132.28	0.016	0.3	84.7
	230.0	24.10	4688	41	136.34	0.066	1.0	84.6
PUT OZ-FT	230.0	24.13	4695	144	129.48	0.221	3.5	84.6
	230.0	24.13	4695	144	129.48	0.221	3.5	84.6
	230.0	24.16	4697	240	137.53	0.393	6.2	84.5
	230.0	24.22	4704	329	145.47	0.570	9.0	84.4
	230.0	24.41	4732	409	148.82	0.724	11.4	84.3
	230.0	24.42	4738	484	151.35	0.872	13.7	84.4
	230.0	24.24	4709	554	156.82	1.034	16.4	84.4
	230.0	24.07	4660	617	162.26	1.192	19.1	84.2
	230.0	23.91	4615	676	166.36	1.339	21.6	83.9
	230.0	23.74	4565	731	169.52	1.474	24.1	83.6
	230.0	23.56	4509	779	168.79	1.566	25.9	83.2
	230.0	23.38	4441	824	167.93	1.647	27.7	82.6
	230.0	23.17	4390	864	164.22	1.689	28.7	82.4
	230.0	22.93	4318	901	159.66	1.713	29.6	81.9
	230.0	22.66	4226	935	151.71	1.690	29.8	81.1
	230.0	22.42	4167	964	143.22	1.644	29.4	80.8
	230.0	21.31	3905	993	129.83	1.535	29.3	79.7
	230.0	9.19	1678	1016	101.87	1.232	54.8	79.4
	230.0	8.47	1586	1041	102.64	1.272	59.8	81.4
	230.0	7.82	1514	1064	103.29	1.308	64.5	84.1
	230.0	7.15	1427	1084	102.61	1.325	69.2	86.9
	230.0	6.46	1331	1102	98.88	1.298	72.7	89.5
	230.0	5.75	1213	1119	93.13	1.241	76.3	91.7
	230.0	5.02	1087	1134	85.36	1.153	79.1	94.1
	230.0	4.27	945	1149	75.00	1.026	81.0	96.3
	230.0	3.49	787	1163	61.83	0.856	81.1	97.9
	230.0	2.69	613	1175	45.79	0.641	78.0	99.1
	230.0	2.04	459	1189	29.89	0.423	68.8	97.8
	230.0	1.07	195	1199	1.22	0.017	6.7	79.5
	230.0	1.00	173	1201	0.00	0.000	0.0	75.2

DRAWING NO.	PAGE 5 of 8	REV.
30PT73		-

Dayton Electric Mfg. Co. Lake Forest, IL 60045 USA

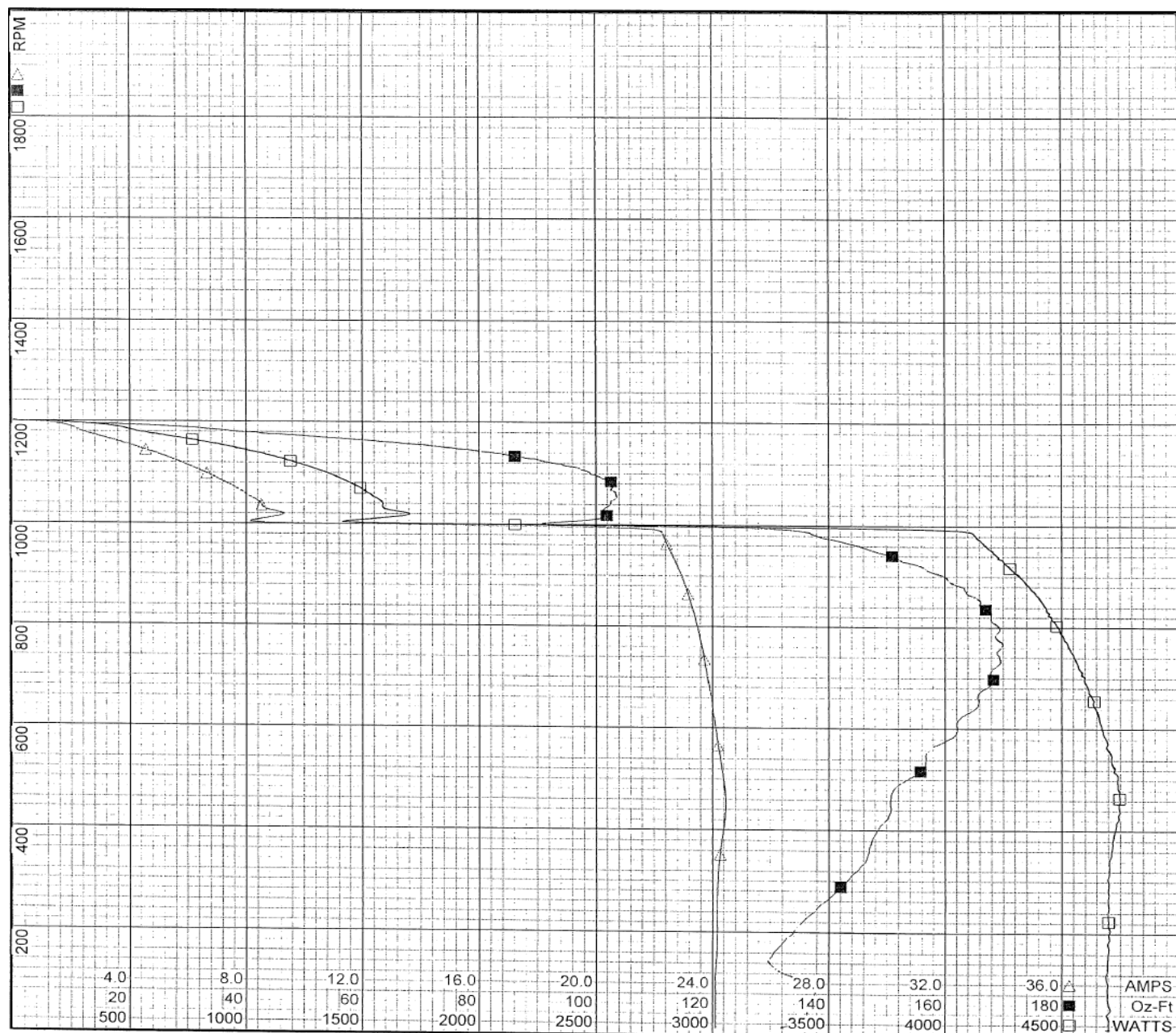
Performance Data



30PT73

REV.

—

**Dayton**

Curve Descriptions:

Motor(1) Test 6 Start 230V 60 Hz 6P

- ☐ SPEED vs WATTS
- ☒ SPEED vs TORQUE
- ☐ SPEED vs ILine

Motor Ratings:

T063CMC2111 1

AMPS
Oz-Ft
WATTS

DRAWING NO.

PAGE 6 of 8

30PT73

REV.	
------	--

Dayton Electric Mfg. Co. Lake Forest, IL 60045 USA

Performance Data



30PT73		REV. -											
Dayton Manufacturing Company													
Motor Description				Test Conditions									
Model: T063CMC2111		Test Type: Run		Run Cap: 0									
Motor ID: 1		Test Number: 8		Start Cap: 0µfd									
Poles: 6		Poles: 6		Environment: 23.2 Deg C 23 % RH 995 hPa									
Volts: 115/230		Volts: 230		Tested: 2/19/2014 12:45:57 PM									
Frequency: 60		Hz: 60		Tested By: Sharp, Gerald									
HP: 3/4		Rotation:		Gear Ratio: 1:1									
Speed: 1140		Special Cond: Provide cap volts, Imain & Iau				Bearing Friction: -0.30 Oz-Ft							
Phase: 1		Speed Conn:				Windage Torque: -0.61 Oz-Ft							
Protector:		TestBoard: Amtps Performance Fixture #1											
Special Points	Vline (V)	Vaux (V)	Vcap (V)	Iline (A)	Imain (A)	Iaux (A)	Watts	RPM	Tq (Oz - ft)	HP	PF (%)	Cap	
0.75 HP	230.0	194.1	224.9	1.016	4.464	5.268	168.2	1195	0.00	0.000	72.0	62.1	
	230.0	198.9	216.3	1.776	3.607	5.078	376.1	1185	21.20	0.299	92.1	62.3	
	230.0	200.1	195.7	2.580	2.820	4.582	583.1	1172	43.50	0.607	98.3	62.1	
	230.0	196.7	186.9	3.028	2.772	4.341	692.2	1167	54.00	0.750	99.4	61.6	
	230.0	196.2	185.9	3.089	2.791	4.310	705.8	1166	55.30	0.768	99.4	61.5	
55.3 OZ-FT	230.0	193.7	180.5	3.436	2.956	4.163	781.4	1160	61.97	0.856	98.9	61.2	
	230.0	193.3	179.5	3.514	2.996	4.136	797.9	1159	63.60	0.878	98.7	61.1	
	230.0	189.9	169.3	4.273	3.527	3.889	954.5	1146	76.30	1.041	97.1	60.9	
	230.0	188.2	164.7	4.660	3.860	3.777	1026.9	1140	82.04	1.113	95.8	60.8	
	230.0	185.9	159.3	5.119	4.310	3.648	1109.5	1132	87.44	1.178	94.2	60.8	
63.6 OZ-FT	230.0	181.7	150.1	5.906	5.193	3.439	1246.7	1116	96.80	1.286	91.8	60.8	
	230.0	177.1	141.8	6.666	6.128	3.261	1368.0	1098	102.14	1.336	89.2	61.0	
	230.0	172.4	134.8	7.369	7.028	3.114	1467.9	1080	105.55	1.357	86.6	61.3	
	230.0	169.5	131.2	7.763	7.550	3.036	1518.0	1068	106.20	1.350	85.0	61.4	
	230.0	167.7	129.0	8.023	7.894	2.989	1548.4	1060	105.32	1.329	83.9	61.5	
1140 RPM	230.0	163.1	124.1	8.629	8.714	2.897	1615.2	1037	104.93	1.296	81.4	61.9	
	230.0	158.5	120.5	9.182	9.480	2.825	1664.1	1014	102.96	1.243	78.8	62.2	
	230.0	153.9	117.7	9.692	10.199	2.773	1706.1	989	98.99	1.166	76.5	62.5	
	230.0	149.4	115.8	10.163	10.857	2.740	1729.5	961	93.77	1.073	74.0	62.8	
	230.0	145.3	114.7	10.594	11.464	2.722	1748.9	932	88.01	0.976	71.8	63.0	
	230.0	141.3	114.2	10.984	12.019	2.716	1760.6	900	82.32	0.882	69.7	63.1	
	230.0	137.6	114.3	11.345	12.535	2.720	1766.4	865	76.32	0.786	67.7	63.2	
	230.0	133.9	114.7	11.658	12.992	2.733	1765.3	828	69.96	0.690	65.8	63.2	
	230.0	130.5	115.4	11.948	13.415	2.756	1762.1	787	62.80	0.588	64.1	63.3	
	230.0	127.3	116.6	12.206	13.795	2.777	1751.1	744	56.68	0.502	62.4	63.2	
	230.0	124.4	117.6	12.433	14.130	2.805	1741.7	697	50.86	0.422	60.9	63.2	
	230.0	121.5	118.9	12.636	14.438	2.836	1729.8	646	44.54	0.343	59.5	63.3	
	230.0	118.7	120.3	12.812	14.714	2.870	1714.3	592	38.17	0.269	58.2	63.3	
	230.0	116.4	121.3	12.967	14.960	2.890	1700.0	533	32.20	0.204	57.0	63.2	
BDT OZ-FT	230.0	114.5	122.1	13.081	15.153	2.902	1682.6	471	25.82	0.145	55.9	63.0	
	230.0	111.6	123.4	13.146	15.296	2.899	1662.1	403	20.11	0.096	55.0	62.3	
	230.0	108.5	126.2	13.211	15.426	2.958	1667.0	333	20.07	0.080	54.9	62.2	
	230.0	106.5	128.1	13.305	15.573	3.007	1668.9	256	17.51	0.053	54.5	62.2	
	230.0	105.0	129.4	13.360	15.671	3.034	1661.0	175	13.27	0.028	54.1	62.2	
	230.0												

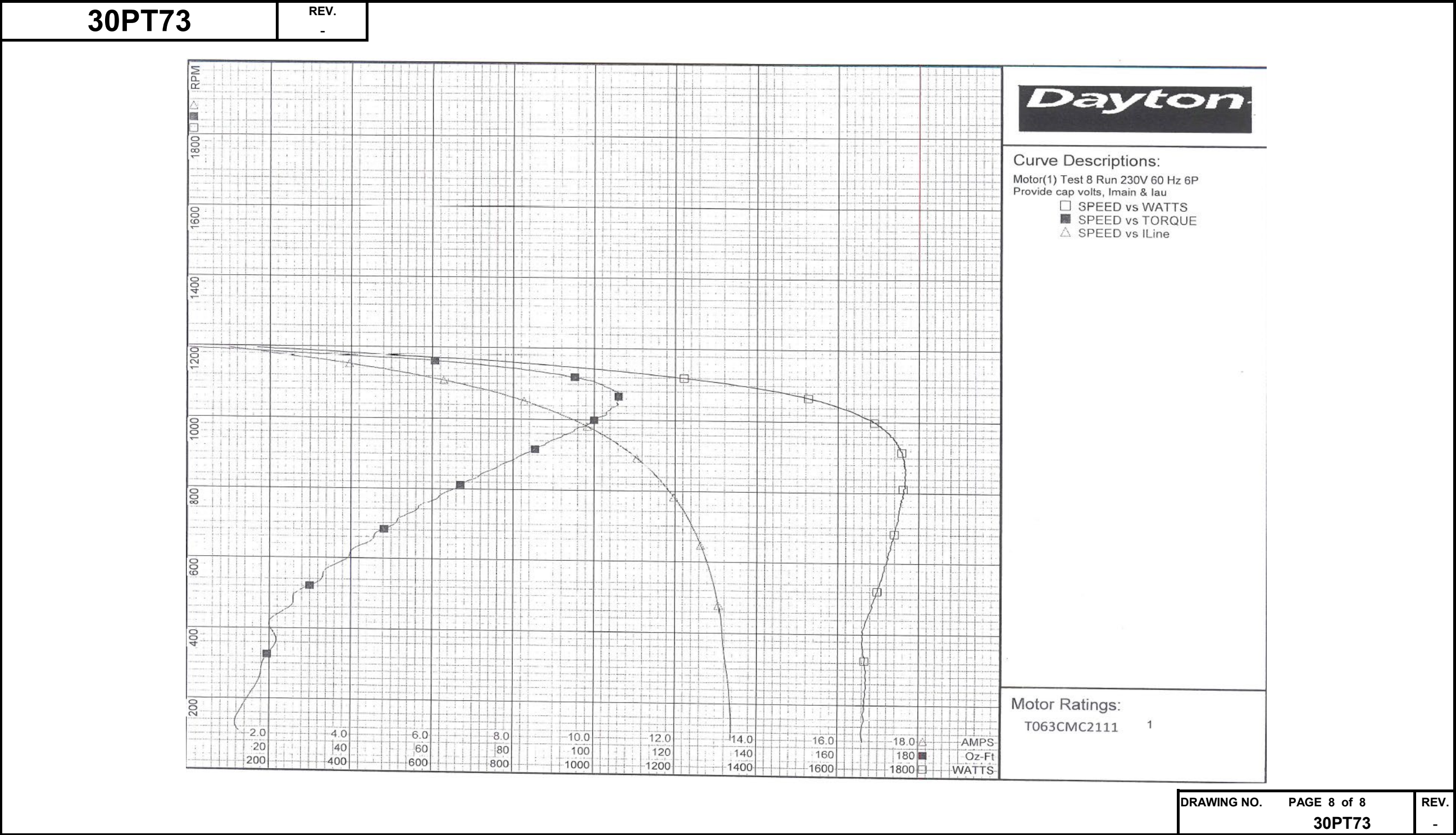
DRAWING NO. PAGE 7 of 8

30PT73

REV.
-

Dayton Electric Mfg. Co. Lake Forest, IL 60045 USA

Performance Data

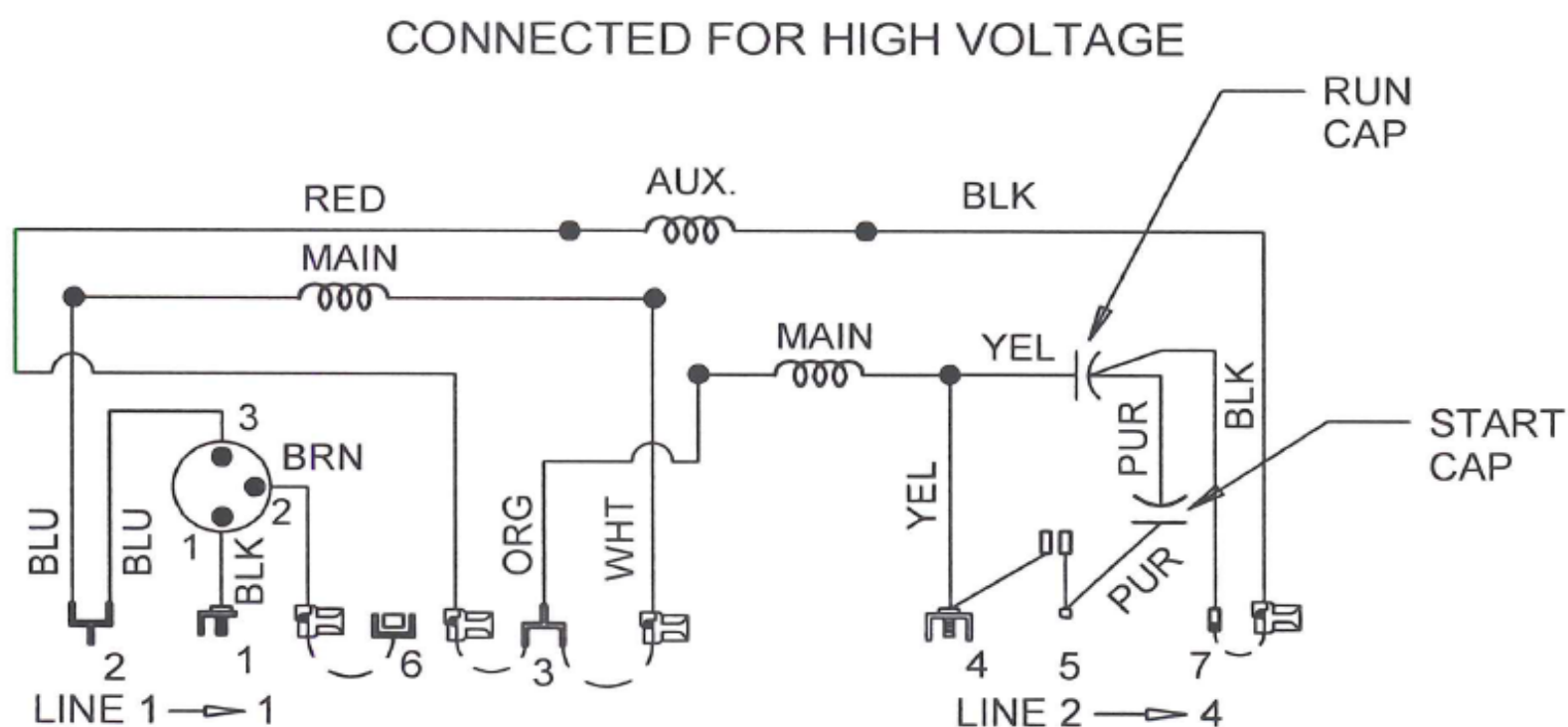
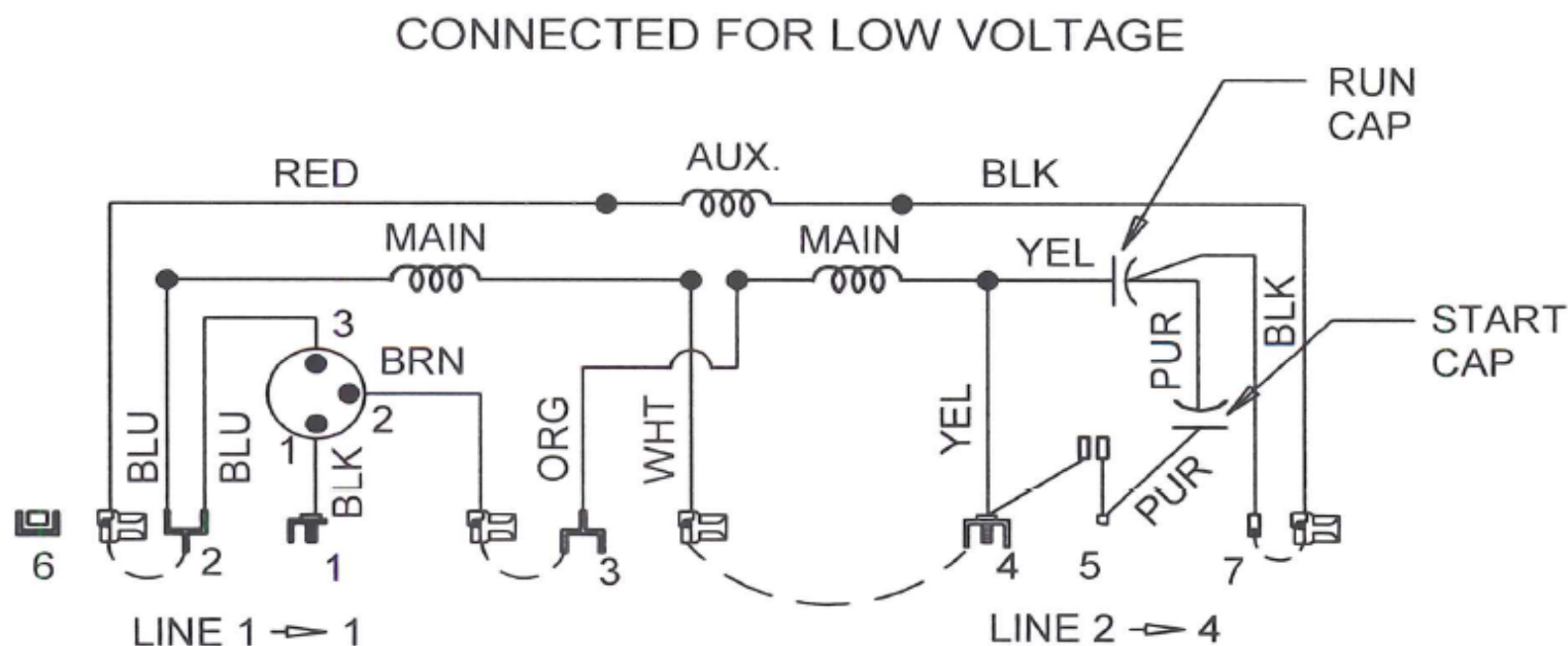


Wiring Diagram



30PT73

REV.
0



ROTATION: CCW SWITCH END REVERSIBLE
TO REVERSE ROTATION INTERCHANGE
BLACK AND RED LEADS
T 6P DUAL VOLT REVERSIBLE W/CAPS & PROT

DRAWING NO.

30PT73

REV.
0

Dayton[®]**INDUSTRIAL MOTOR**Part
No

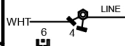
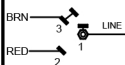
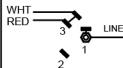
30PT73

**HP:** 3/4**PH:** 1**VOLTS:** 115/230**HZ:** 60**AMPS:** 6.6/3.4**FR:** 56**RPM:** 1140**INS CL:** B**DUTY:** CONT**AMB:** 40 °C**SF:** 1.15**SFA:** 7.5/3.8**KVA CODE:** K**ENCL:** ODP**THERMALLY PROTECTED:** AUTOMFG. NO. PROT. CODE: 00880 AVG. F.L.
EFF. 80.2**MTR REF:** T63CXC MC-2111**USABLE FOR** 208 V AT 1.0 SF

E37403



258501

NEMA
Premium[™]**Disconnect Power Before Making Any
Electrical Connections or Changes****CONNECTIONS****LOW VOLTAGE****HIGH VOLTAGE****ROTATION: CCW SWITCH END REVERSIBLE
TO REVERSE ROTATION
INTERCHANGE RED AND BLACK LEADS****Mfd for Dayton Electric Mfg. Co., Lake Forest, IL 60045 USA****Made in Mexico**