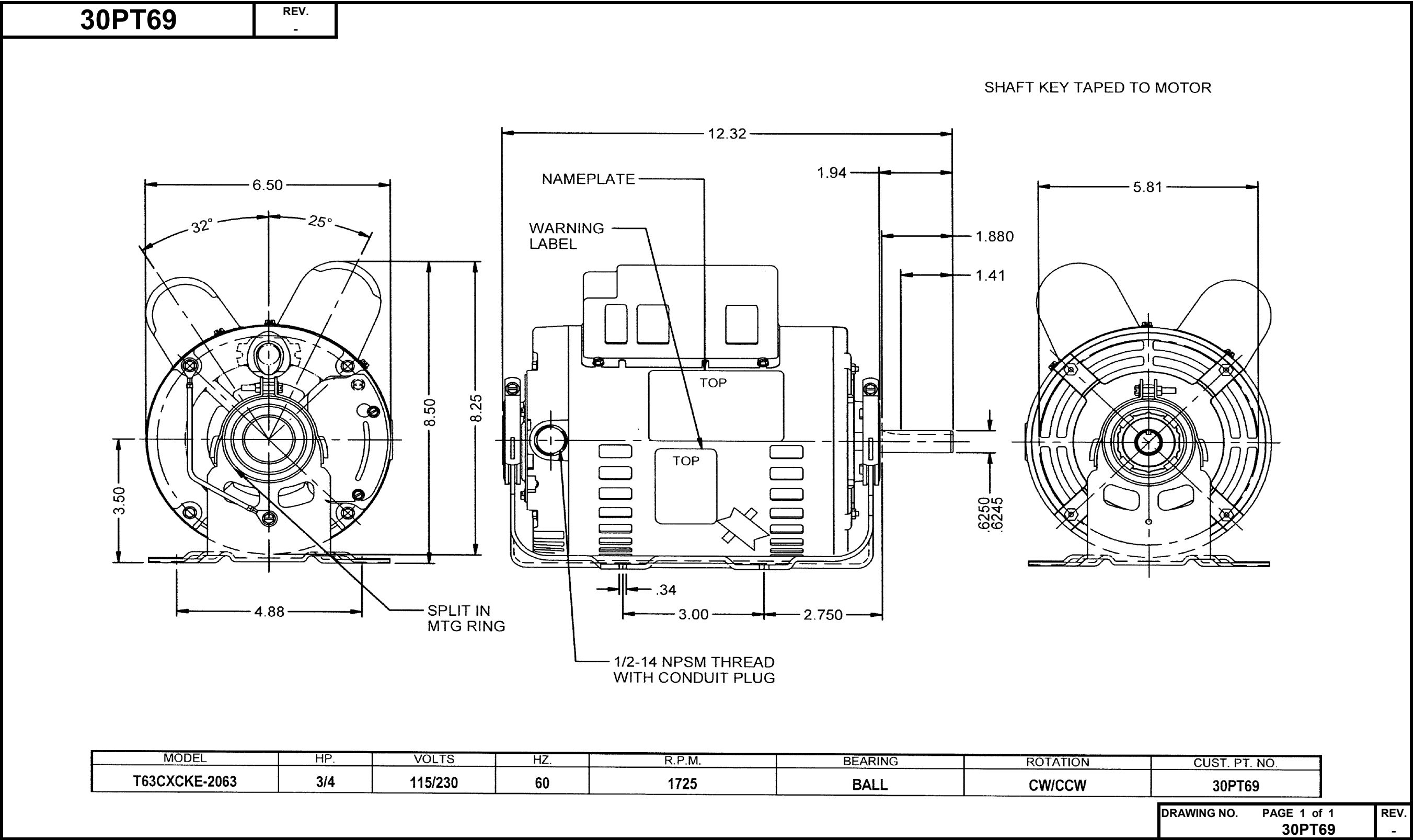


Dimensional Drawing



Dayton Electric Mfg. Co. Lake Forest, IL 60045 USA

Performance Data



30PT69		REV. -							
MOTOR PERFORMANCE									
HP:	3/4								
Poles:	4								
No. of Speeds:	1								
Volts:	115/208-230	115	208	230					
HZ:	60	60	60	60					
Service Factor:	1.25								
Efficiency:	@ Rated Load	81.10	79.70	79.80					
Power Factor:	@ Rated Load	97.60	97.00	96.90					
Amps:	@ No Load								
	@ Rated Load	6.15	3.48	3.15					
	@ Service Factor	7.77	4.46	3.95					
	@ Locked Rotor	45.85	21.69	24.36					
RPM:	@ Rated Load	1749	1736	1748					
Ambient (°C):									
Altitude (FASL):									
Torques:	Breakdown	92.0	74.6	92.8					
	Locked Rotor	124.8	90.03	112.33					
	Pull-Up	113.5	83.93	103.01					
	Rated Load	36.03	36.29	36.03					
	Service Factor	2.836	2.456	2.827					
Watts:	Rated Load	690	702	701					
KVA Code:									
Temperature Rise:	@ Rated Load	31	35	36.1					
	@ Service Factor	41.4	58.1	43.8					
Thermal Protector:	Trip Temp (°C)	120.5	127.1	127.4					
Winding Material:	Start (Auxiliary)	CU							
	Run (Main)	CU							
Capacitor(s):	Start (MFD / Volts)	504 mfd							
	No. of Start Capacitors								
	Run (MFD / Volts)	50 mfd							
	No. of Run Capacitors								
LOW SPEED PERFORMANCE DATA:									
HP:									
Poles:									
Volts:									
HZ:									
Efficiency:	@ Rated Load								
Power Factor:	@ Rated Load								
Amps:	@ No Load								
	@ Rated Load								
	@ Service Factor								
	@ Locked Rotor								
Torques:	Bead Down								
	Locked Rotor								
	Pull-Up								
	Rated Load								
	Service Factor								
Watts:	@ Rated Load								
Temperature Rise:	@ Rated Load								
	@ Service Factor								
		DRAWING NO. 30PT69				PAGE 1 of 1		REV. -	

Dayton Electric Mfg. Co. Lake Forest, IL 60045 USA

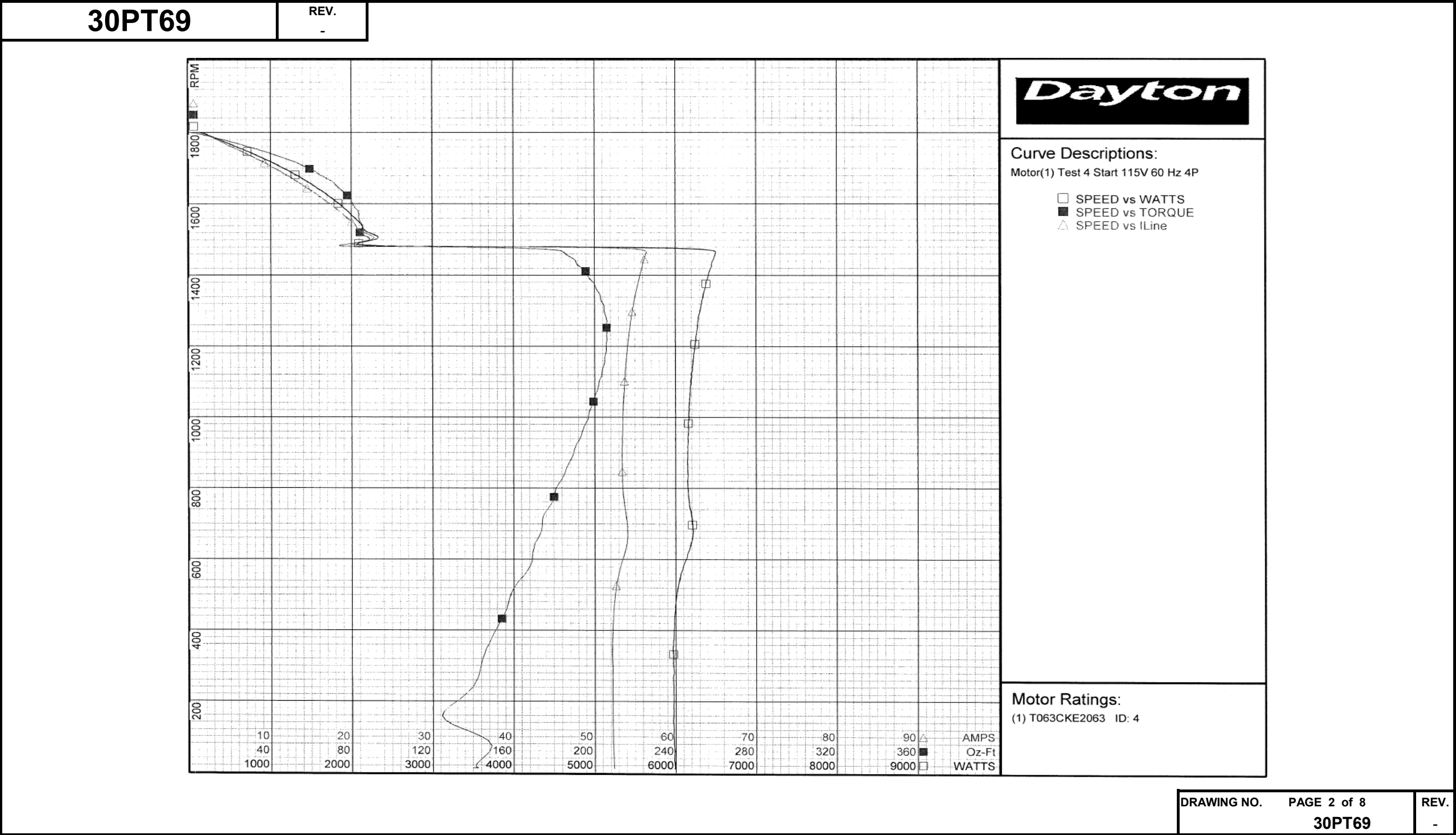
Performance Data



30PT69		REV. -							
Dayton Manufacturing Company									
Motor Description					Test Conditions				
Model: T063CKE2063		Test Type: Start		Run Cap: 0					
Motor ID: 4		Test Number: 4		Start Cap: 0µfd					
Poles: 4		Poles: 4		Environment:					
Volts: 115/208-230		Volts: 115		Tested: 4/10/2014 10:20:29 AM					
Frequency: 60		Hz: 60		Tested By: Sharp, Gerald					
HP: 3/4		Rotation:		Gear Ratio: 1:1					
Speed: 1725		Special Cond:		Bearing Friction: -0.25 Oz-Ft					
Phase: 1		Speed Conn:		Windage Torque: -1.44 Oz-Ft					
Protector: -		TestBoard:		Amps Performance Fixture #1					
Special Points	Vline (V)	Iline (A)	Watts	RPM	Tq (Oz - ft)	HP	Eff (%)	PF (%)	
	115.0	52.35	5990	11	139.9	0.018	0.2	99.5	
	115.0	52.28	5987	59	148.1	0.103	1.3	99.6	
PUT OZ-FT	115.0	52.20	5972	158	124.5	0.235	2.9	99.5	
	115.0	52.19	5975	212	134.8	0.341	4.3	99.6	
	115.0	52.13	5969	359	147.4	0.629	7.9	99.6	
	115.0	52.46	6008	493	158.1	0.927	11.5	99.6	
	115.0	53.63	6146	615	169.2	1.240	15.0	99.6	
	115.0	53.84	6194	727	175.0	1.514	18.2	100.0	
	115.0	53.42	6152	829	184.2	1.817	22.0	100.1	
	115.0	53.43	6154	925	191.1	2.106	25.5	100.2	
	115.0	53.51	6168	1014	197.3	2.382	28.8	100.2	
	115.0	53.69	6193	1094	202.2	2.633	31.7	100.3	
	115.0	53.95	6224	1168	205.0	2.850	34.2	100.3	
	115.0	54.27	6262	1235	206.1	3.030	36.1	100.3	
	115.0	54.68	6306	1297	204.8	3.163	37.4	100.3	
	115.0	55.13	6353	1353	202.0	3.254	38.2	100.2	
	115.0	55.67	6411	1403	196.5	3.283	38.2	100.2	
	115.0	56.22	6477	1449	188.7	3.256	37.5	100.2	
	115.0	27.94	2889	1481	80.6	1.422	36.7	89.9	
	115.0	21.67	2233	1518	84.6	1.529	51.1	89.6	
	115.0	19.63	2055	1558	84.1	1.559	56.6	91.0	
	115.0	17.72	1883	1594	81.6	1.548	61.4	92.4	
	115.0	15.90	1711	1624	78.0	1.508	65.7	93.6	
	115.0	14.06	1531	1652	72.6	1.427	69.6	94.7	
	115.0	12.22	1344	1678	65.7	1.312	72.9	95.6	
	115.0	10.47	1159	1700	58.6	1.187	76.4	96.3	
	115.0	8.41	937	1724	48.4	0.994	79.1	96.9	
	115.0	6.55	732	1746	37.5	0.780	79.5	97.3	
	115.0	4.64	517	1765	25.5	0.537	77.4	97.0	
	115.0	2.81	302	1785	12.1	0.258	63.8	93.5	
	115.0	1.70	116	1801	0.0	0.000	0.0	59.6	
							DRAWING NO.	PAGE 1 of 8	REV.
							30PT69		-

Dayton Electric Mfg. Co. Lake Forest, IL 60045 USA

Performance Data



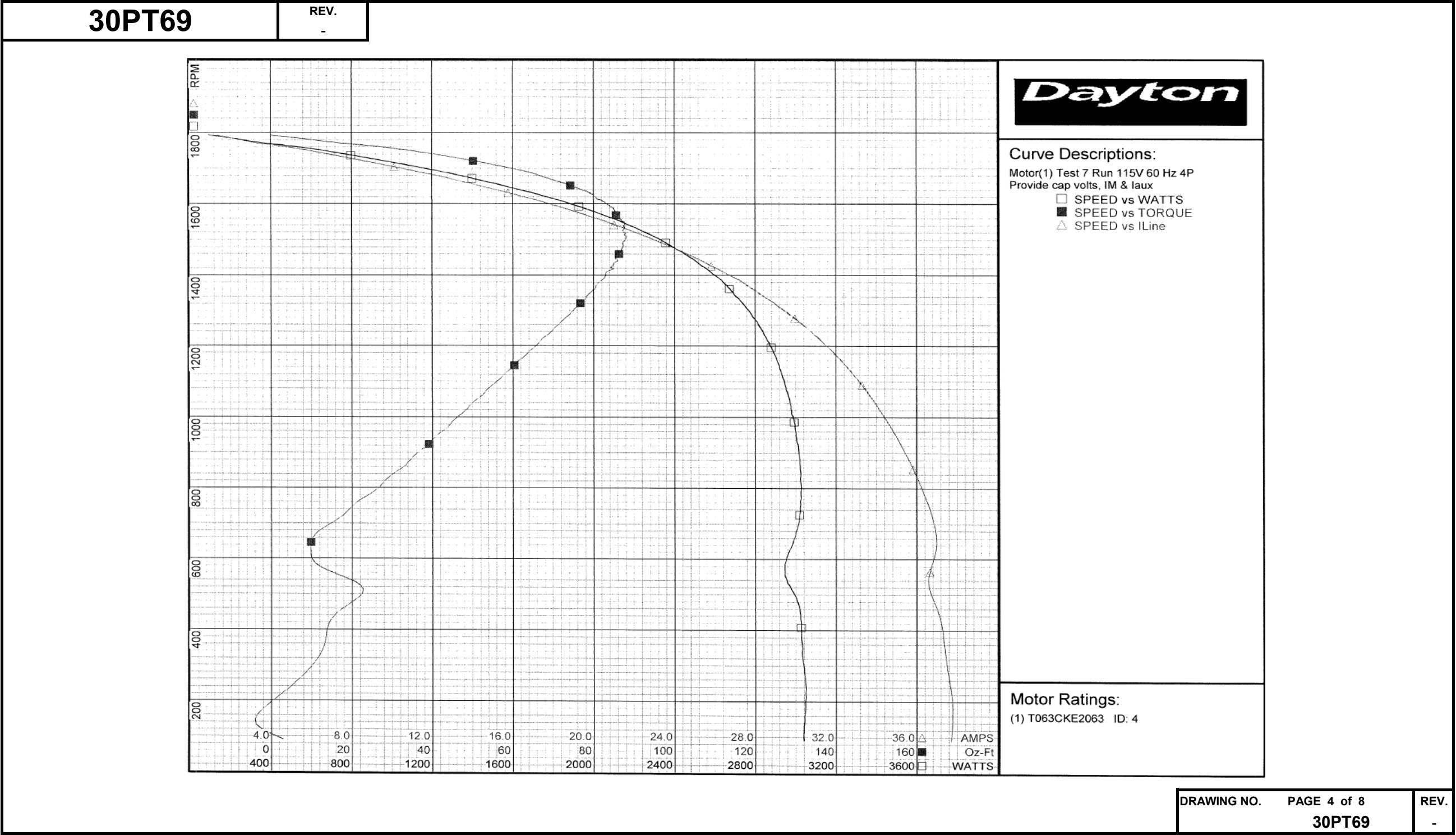
Performance Data



30PT69		REV. -											
Dayton Manufacturing Company													
Motor Description				Test Conditions									
Model:		T063CKE2063		Test Type:		Run		Run Cap:		0			
Motor ID:		4		Test Number:		7		Start Cap:		0μfd			
Poles:		4		Poles:		4		Environment:					
Volts:		115/208-230		Volts:		115		Tested:		4/10/2014 11:56:19 AM			
Frequency:		60		Hz:		60		Tested By:		Sharp, Gerald			
HP:		3/4		Rotation:				Gear Ratio:		1:1			
Speed:		1725		Special Cond:		Provide cap volts, IM & Iaux		Bearing Friction:		-0.34 Oz-Ft			
Phase:		1		Speed Conn:				Windage Torque:		-1.45 Oz-Ft			
Protector:		-		TestBoard:		Amtps Performance Fixture #1							
Special Points	Vline (V)	Vaux (V)	Vcap (V)	Iline (A)	Imain (A)	Iaux (A)	Watts	RPM	Tq (Oz-ft)	HP	PF (%)	Cap	
	115.0	119.7	175.0	1.34	3.56	3.403	92	1793	0.00	0.000	59.6	51.6	
	115.0	115.0	166.8	2.89	3.09	3.215	314	1774	13.87	0.293	94.4	51.1	
	115.0	110.0	157.8	5.21	4.51	2.981	584	1756	30.12	0.630	97.5	50.1	
0.75 HP	115.0	107.7	154.8	6.14	5.36	2.923	690	1746	36.07	0.750	97.6	50.1	
36.5 OZ-FT	115.0	107.5	154.6	6.21	5.43	2.919	698	1746	36.50	0.759	97.6	50.1	
	115.0	105.4	151.9	7.11	6.27	2.866	798	1736	42.00	0.868	97.6	50.0	
42 OZ-FT	115.0	105.4	151.9	7.11	6.27	2.866	798	1736	42.00	0.868	97.6	50.0	
45.6 OZ-FT	115.0	103.8	150.1	7.75	6.89	2.831	868	1730	45.60	0.939	97.4	50.0	
1725 RPM	115.0	102.7	148.8	8.19	7.33	2.807	917	1725	48.04	0.987	97.4	50.0	
	115.0	100.9	146.5	8.96	8.12	2.768	1002	1716	52.29	1.068	97.2	50.1	
	115.0	96.4	141.3	10.86	10.07	2.669	1205	1695	61.59	1.243	96.5	50.1	
	115.0	91.5	136.4	12.84	12.07	2.582	1399	1672	68.87	1.371	94.8	50.2	
	115.0	87.2	131.8	14.66	13.99	2.502	1584	1648	75.48	1.480	94.0	50.4	
	115.0	82.4	127.5	16.48	15.93	2.421	1760	1621	80.40	1.552	92.9	50.4	
	115.0	77.9	123.3	18.26	17.83	2.350	1927	1593	84.05	1.594	91.8	50.6	
	115.0	73.4	119.7	20.00	19.70	2.283	2084	1561	86.11	1.601	90.6	50.6	
	115.0	68.7	116.6	21.69	21.52	2.223	2225	1528	87.43	1.590	89.2	50.6	
BDT OZ-FT	115.0	65.9	114.8	22.68	22.59	2.191	2306	1507	88.09	1.580	88.4	50.6	
	115.0	64.1	113.9	23.33	23.29	2.173	2357	1491	87.18	1.548	87.8	50.6	
	115.0	59.5	111.5	24.92	25.01	2.130	2473	1452	85.82	1.483	86.3	50.6	
	115.0	55.0	109.7	26.44	26.66	2.094	2580	1408	83.16	1.394	84.8	50.6	
	115.0	50.8	108.3	27.85	28.19	2.069	2673	1362	80.44	1.304	83.5	50.7	
	115.0	46.6	107.4	29.20	29.64	2.052	2754	1310	75.78	1.182	82.0	50.7	
	115.0	42.5	106.9	30.45	31.02	2.042	2821	1256	70.86	1.059	80.5	50.7	
	115.0	38.7	106.8	31.62	32.29	2.039	2879	1196	65.26	0.929	79.2	50.6	
	115.0	35.0	106.9	32.69	33.46	2.042	2925	1132	59.10	0.796	77.8	50.7	
	115.0	31.4	107.0	33.67	34.53	2.044	2963	1062	52.59	0.665	76.5	50.7	
	115.0	28.1	107.6	34.56	35.52	2.054	2992	987	45.02	0.529	75.3	50.6	
	115.0	24.9	108.3	35.38	36.41	2.063	3014	906	37.09	0.400	74.1	50.6	
	115.0	22.0	108.7	36.11	37.23	2.068	3024	819	28.18	0.275	72.8	50.5	
	115.0	18.7	108.5	36.73	37.93	2.055	3019	726	18.18	0.157	71.5	50.2	
	115.0	14.1	107.9	36.95	38.22	2.039	2969	626	9.75	0.073	69.9	50.1	
	115.0	9.5	113.7	36.60	37.98	2.157	2972	523	22.15	0.138	70.6	50.3	
	115.0	10.5	116.8	37.25	38.67	2.212	3027	408	14.03	0.068	70.7	50.2	
	115.0	10.4	117.6	37.52	38.96	2.224	3042	288	9.36	0.032	70.5	50.2	
	115.0	9.9	119.7	37.77	39.28	2.278	3043	158	-3.54	-0.007	70.1	50.5	
												DRAWING NO.	PAGE 3 of 8
												30PT69	REV.
												-	

Dayton Electric Mfg. Co. Lake Forest, IL 60045 USA

Performance Data



Dayton Electric Mfg. Co. Lake Forest, IL 60045 USA

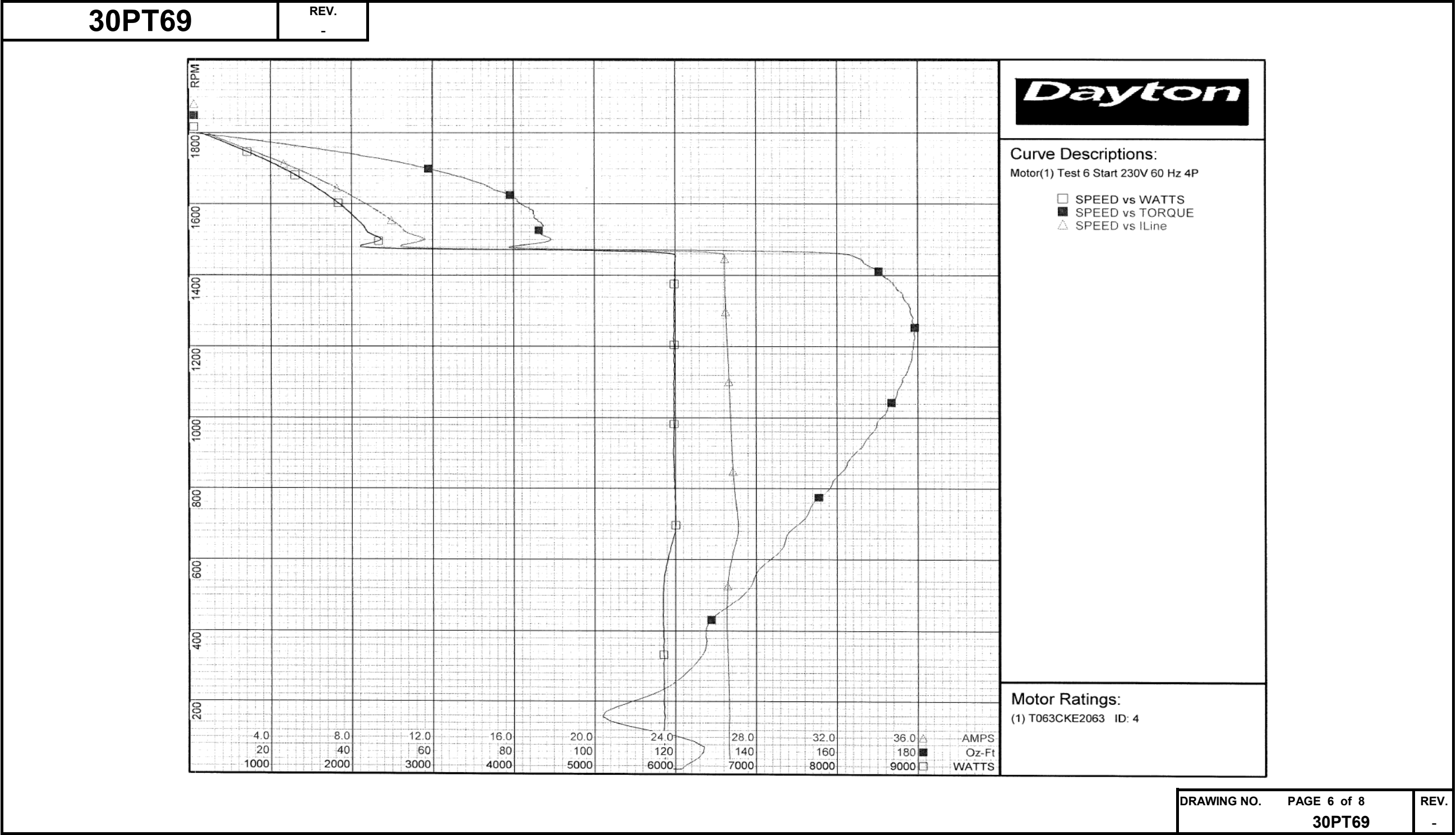
Performance Data



30PT69		REV. -						
Dayton Manufacturing Company								
Motor Description				Test Conditions				
Model: T063CKE2063		Test Type: Start		Run Cap: 0				
Motor ID: 4		Test Number: 6		Start Cap: 0μfd				
Poles: 4		Poles: 4		Environment:				
Volts: 115/208-230		Volts: 230		Tested: 4/10/2014 2:24:23 PM				
Frequency: 60		Hz: 60		Tested By: Sharp, Gerald				
HP: 3/4		Rotation:		Gear Ratio: 1:1				
Speed: 1725		Special Cond:		Bearing Friction: -0.28 Oz-Ft				
Phase: 1		Speed Conn:		Windage Torque: -1.37 Oz-Ft				
Protector: -		TestBoard:		Amps Performance		Fixture #1		
Special Points	Vline (V)	Iline (A)	Watts	RPM	Tq (Oz - ft)	HP	Eff (%)	PF (%)
	230.0	26.70	5869	11	118.60	0.015	0.2	95.6
	230.0	26.66	5864	57	126.84	0.087	1.1	95.6
PUT OZ-FT	230.0	26.66	5871	157	101.92	0.190	2.4	95.7
	230.0	26.64	5860	211	112.36	0.283	3.6	95.6
	230.0	26.57	5852	359	127.55	0.545	7.0	95.8
	230.0	26.56	5849	491	135.79	0.793	10.1	95.8
	230.0	26.83	5916	613	144.98	1.059	13.4	95.9
	230.0	27.06	6002	727	152.71	1.322	16.4	96.4
	230.0	26.88	5984	831	159.71	1.579	19.7	96.8
	230.0	26.79	5980	926	166.63	1.836	22.9	97.1
	230.0	26.72	5986	1014	172.04	2.076	25.9	97.4
	230.0	26.66	5977	1094	175.90	2.292	28.6	97.5
	230.0	26.60	5984	1168	178.52	2.481	30.9	97.8
	230.0	26.54	5983	1235	179.12	2.633	32.8	98.0
	230.0	26.50	5985	1297	178.07	2.750	34.3	98.2
	230.0	26.47	5989	1353	175.72	2.831	35.3	98.4
	230.0	26.45	5997	1403	170.94	2.856	35.5	98.6
	230.0	26.46	6004	1450	164.97	2.848	35.4	98.7
	230.0	10.43	2109	1480	78.92	1.390	49.2	87.9
	230.0	10.63	2188	1523	86.29	1.564	53.3	89.5
	230.0	9.80	2048	1561	85.10	1.581	57.6	90.9
	230.0	8.87	1880	1595	82.63	1.569	62.2	92.1
	230.0	7.95	1707	1625	79.22	1.533	67.0	93.3
	230.0	7.03	1527	1653	73.24	1.441	70.4	94.4
	230.0	6.11	1340	1678	66.30	1.324	73.7	95.4
	230.0	5.20	1151	1701	58.41	1.183	76.7	96.2
	230.0	4.31	954	1723	49.45	1.014	79.3	96.3
	230.0	3.28	731	1745	37.34	0.776	79.2	96.8
	230.0	2.31	512	1765	25.03	0.526	76.7	96.2
	230.0	1.39	296	1786	11.64	0.247	62.3	92.7
	230.0	0.83	114	1801	0.00	0.000	0.0	60.2
				DRAWING NO. PAGE 5 of 8 REV.				
				30PT69 -				

Dayton Electric Mfg. Co. Lake Forest, IL 60045 USA

Performance Data



Dayton Electric Mfg. Co. Lake Forest, IL 60045 USA

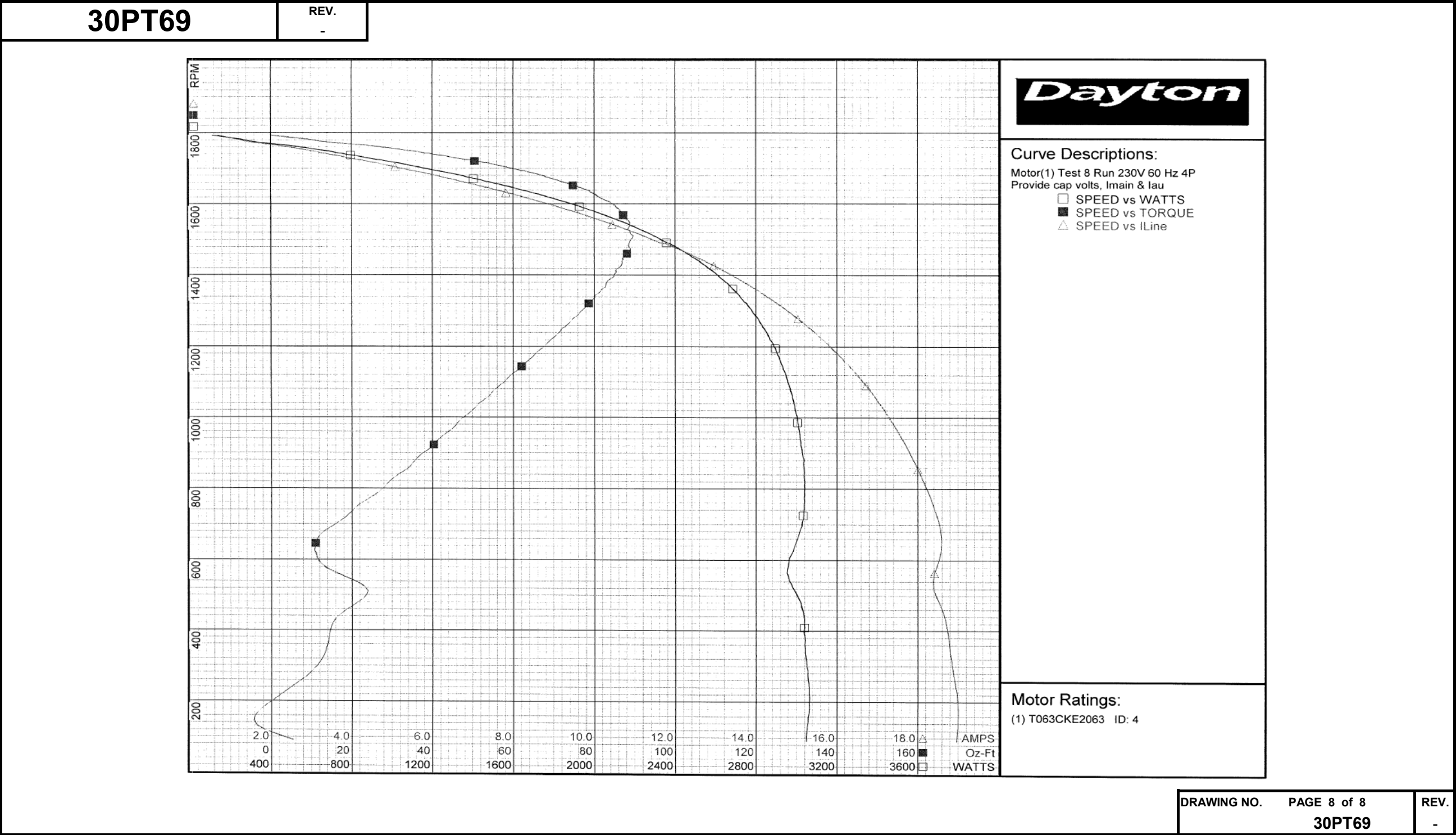
Performance Data



30PT69		REV. -											
Dayton Manufacturing Company													
Motor Description				Test Conditions									
Model: T063CKE2063		Test Type: Run		Run Cap: 0									
Motor ID: 4		Test Number: 8		Start Cap: 0µfd									
Poles: 4		Poles: 4		Environment:									
Volts: 115/208-230		Volts: 230		Tested: 4/10/2014 3:25:30 PM									
Frequency: 60		Hz: 60		Tested By: Sharp, Gerald									
HP: 3/4		Rotation:		Gear Ratio: 1:1									
Speed: 1725		Special Cond: Provide cap volts, Imain & Iau				Bearing Friction: -0.33 Oz-Ft							
Phase: 1		Speed Conn:				Windage Torque: -1.44 Oz-Ft							
Protector: -		TestBoard: Amtps Performance Fixture #1											
Special Points	Vline (V)	Vaux (V)	Vcap (V)	Iline (A)	Imain (A)	Iaux (A)	Watts	RPM	Tq (Oz-ft)	HP	PF (%)	Cap	
	230.0	157.3	174.9	0.688	3.33	3.362	112	1792	0.00	0.000	71.0	51.0	
	230.0	159.9	166.8	1.452	2.77	3.188	320	1775	13.48	0.285	95.9	50.7	
	230.0	162.8	157.5	2.637	2.75	2.972	592	1756	30.12	0.629	97.6	50.0	
36.5 OZ-FT	230.0	162.6	154.5	3.138	3.00	2.910	705	1746	36.50	0.759	97.6	50.0	
0.75 HP	230.0	162.6	154.7	3.105	2.99	2.914	697	1747	36.06	0.750	97.7	50.0	
	230.0	162.7	152.0	3.549	3.25	2.865	798	1737	41.56	0.859	97.8	50.0	
42 OZ-FT	230.0	162.6	151.8	3.585	3.27	2.860	806	1736	42.00	0.868	97.7	50.0	
45.6 OZ-FT	230.0	162.4	150.0	3.904	3.50	2.825	875	1729	45.60	0.939	97.4	49.9	
1725 RPM	230.0	162.4	148.9	4.101	3.66	2.805	918	1725	47.92	0.984	97.4	50.0	
	230.0	162.3	146.5	4.530	4.03	2.762	1013	1716	52.65	1.076	97.3	50.0	
	230.0	161.6	141.3	5.453	4.89	2.666	1209	1695	61.76	1.246	96.4	50.0	
	230.0	160.8	136.4	6.392	5.85	2.578	1405	1671	69.50	1.383	95.6	50.1	
	230.0	159.6	131.7	7.300	6.82	2.493	1588	1648	76.18	1.494	94.6	50.2	
	230.0	158.3	127.5	8.179	7.78	2.414	1758	1622	80.78	1.560	93.5	50.2	
	230.0	157.0	123.5	9.074	8.77	2.340	1929	1593	85.32	1.618	92.4	50.3	
	230.0	155.2	119.8	9.938	9.74	2.274	2083	1562	87.34	1.624	91.1	50.4	
	230.0	153.4	116.4	10.789	10.71	2.209	2226	1528	88.30	1.606	89.7	50.3	
BDT OZ-FT	230.0	152.5	115.1	11.205	11.19	2.182	2294	1510	89.65	1.612	89.0	50.3	
	230.0	151.5	113.6	11.603	11.64	2.158	2358	1492	88.73	1.576	88.4	50.4	
	230.0	149.3	111.1	12.502	12.57	2.109	2481	1452	87.36	1.510	86.3	50.3	
	230.0	147.3	109.0	13.258	13.44	2.072	2591	1409	85.56	1.435	85.0	50.4	
	230.0	145.1	107.5	13.978	14.27	2.042	2686	1362	82.11	1.332	83.5	50.4	
	230.0	142.9	106.3	14.658	15.06	2.019	2766	1311	77.93	1.217	82.0	50.4	
	230.0	140.6	105.5	15.287	15.80	2.004	2834	1256	72.78	1.088	80.6	50.4	
	230.0	138.6	105.1	15.877	16.49	1.997	2897	1196	67.13	0.956	79.3	50.4	
	230.0	136.1	105.1	16.432	17.14	1.994	2941	1131	60.85	0.819	77.8	50.3	
	230.0	134.2	105.3	16.921	17.72	1.997	2980	1061	54.17	0.684	76.6	50.3	
	230.0	132.0	105.7	17.369	18.26	2.004	3006	986	46.39	0.545	75.3	50.3	
	230.0	130.1	105.9	17.782	18.75	2.013	3028	906	38.67	0.417	74.0	50.4	
	230.0	128.5	106.3	18.154	19.20	2.018	3041	819	29.28	0.285	72.8	50.4	
	230.0	127.6	106.0	18.469	19.59	2.006	3034	725	19.13	0.165	71.4	50.2	
	230.0	126.6	105.1	18.575	19.78	1.987	2983	625	10.71	0.080	69.8	50.1	
	230.0	120.1	110.6	18.393	19.71	2.088	2982	522	23.29	0.145	70.5	50.1	
	230.0	117.2	113.9	18.723	20.07	2.150	3040	408	14.84	0.072	70.6	50.1	
	230.0	116.3	114.5	18.872	20.24	2.162	3057	288	10.45	0.036	70.4	50.1	
	230.0	113.5	116.9	18.996	20.45	2.214	3058	158	-4.02	-0.008	70.0	50.2	
DRAWING NO. PAGE 7 of 8												REV.	
30PT69												-	

Dayton Electric Mfg. Co. Lake Forest, IL 60045 USA

Performance Data

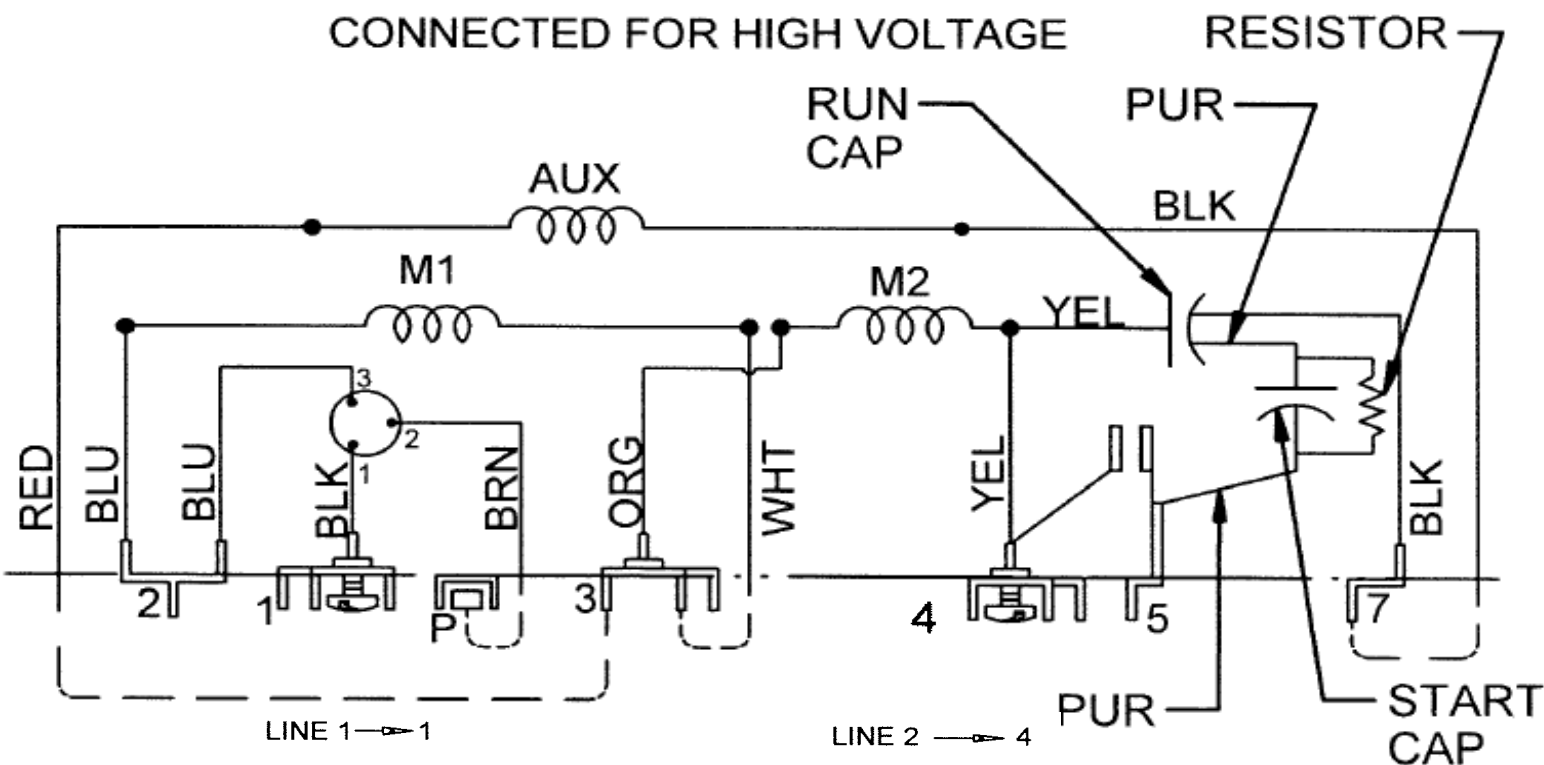
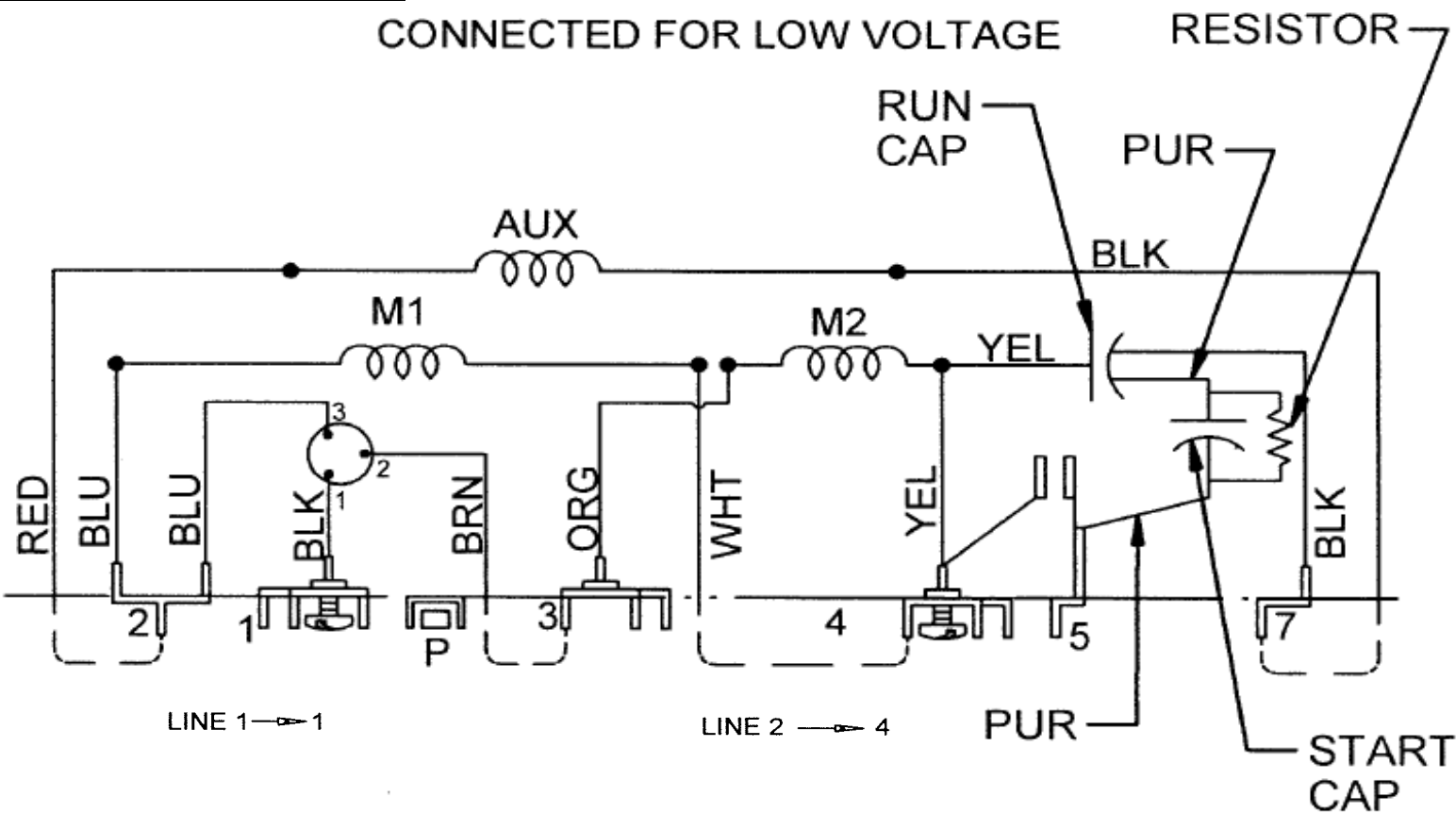


Wiring Diagram



30PT69

REV.
0



ROTATION: CCW SWITCH END REVERSIBLE
TO REVERSE ROTATION INTERCHANGE
BLACK AND RED LEADS

T4 DUAL VOLT REVERSIBLE W/CAPS & PROT

DRAWING NO.

30PT69

REV.
0

Dayton[®] INDUSTRIAL MOTOR

Part No 30PT69



HP: 3/4

PH: 1

VOLTS: 115/230

HZ: 60

AMPS: 7.0/3.5

FR: 56

RPM: 1725

INS CL: B

DUTY: CONT

AMB: 40 °C

SF: 1.25

SFA: 8.2/4.1

KVA CODE: K

ENCL: ODP

THERMALLY PROTECTED: AUTO

MFG. NO. PROT. CODE: 00300 AVG. F.L. EFF. 81.8

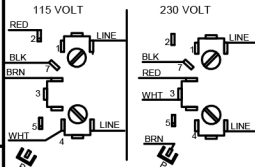
MTR REF: T63CXCKE-2063

USABLE FOR 208 V AT 1.0 SF

NEMA
Premium[™]

Disconnect Power Before Making Any
Electrical Connections or Changes

—CONNECTIONS



MOTOR IS CW ROTATION SHAFT END
TO REVERSE ROTATION INTERCHANGE
RED AND BLACK LEADS.



Mfd for Dayton Electric Mfg. Co., Lake Forest, IL 60045 USA

Made in Mexico