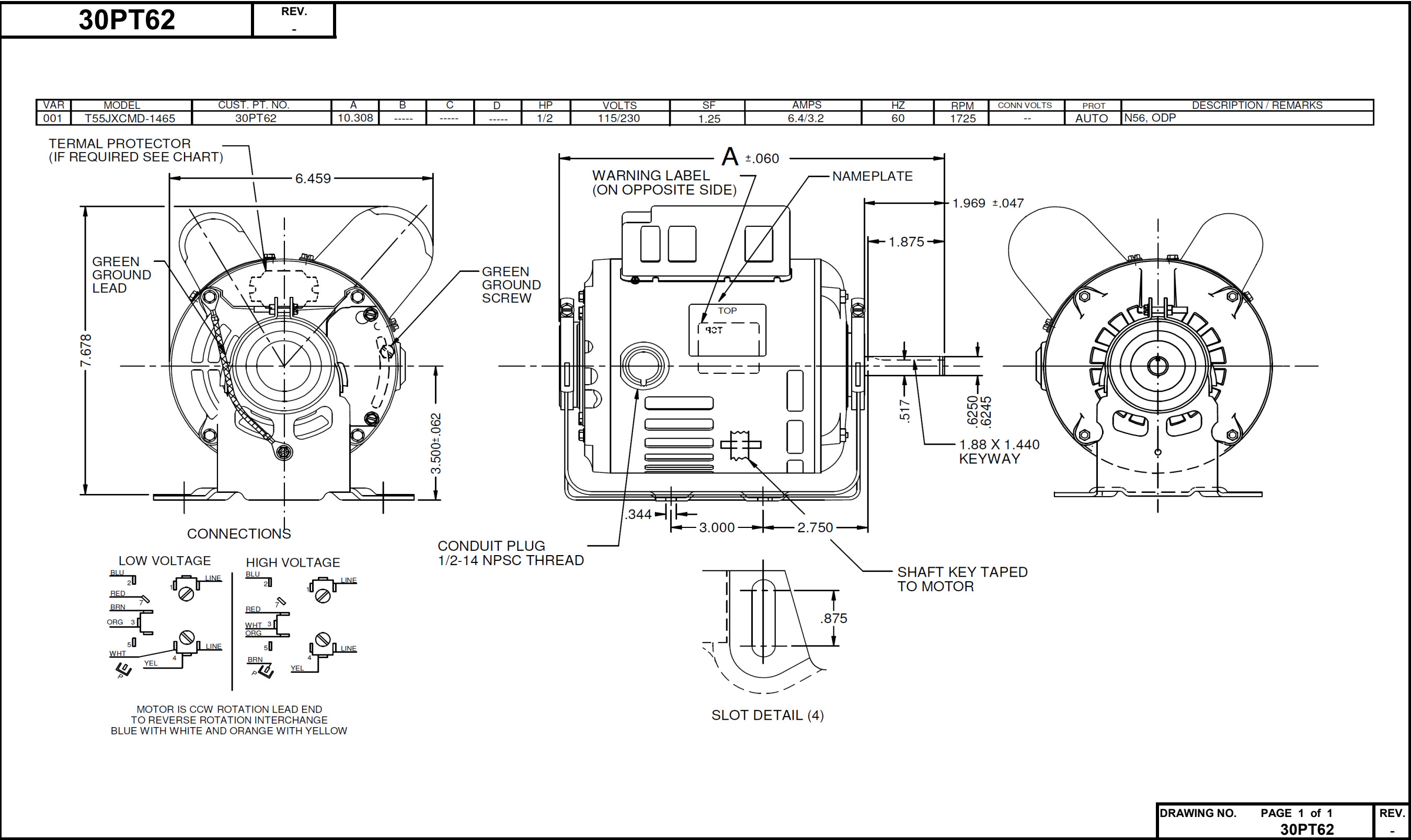


Dimensional Drawing



# Performance Data



30PT62		REV.							
<b>MOTOR PERFORMANCE</b>									
HP:	1/2								
Poles:	4								
No. of Speeds:	1								
Volts:	115/208-230	115	208	230					
HZ:	60	60	60	60					
Service Factor:	1.25								
Efficiency:	@ Rated Load	59.80	62.00	58.30					
Power Factor:	@ Rated Load	94.70	95.80	96.50					
Amps:	@ No Load								
	@ Rated Load	5.73	3.02	2.88					
	@ Service Factor	6.37	3.40	3.23					
	@ Locked Rotor	42.21	18.50	20.72					
RPM:	@ Rated Load	1762	1752	1763					
Ambient (°C):									
Altitude (FASL):									
Torques:	Breakdown	74.7	59.8	75.1					
	Locked Rotor	110.38	72.63	93.87					
	Pull-Up	107.87	71.97	89.89					
	Rated Load	23.84	23.98	23.83					
	Service Factor	4.707	4.09	4.662					
Watts:	Rated Load	624	601.5	639					
KVA Code:									
Temperature Rise:	@ Rated Load	60.5	63	63.3					
	@ Service Factor	72.7	89.7	77					
Thermal Protector:	Trip Temp (°C)	143.8		152.1					
Winding Material:	Start (Auxiliary)	CU							
	Run (Main)	CU							
Capacitor(s):	Start (MFD / Volts)	709.5mfd 110V							
	No. of Start Capacitors								
	Run (MFD / Volts)	30 mfd 370 V							
	No. of Run Capacitors								
<b>LOW SPEED PERFORMANCE DATA:</b>									
HP:									
Poles:									
Volts:		120	208	230	277	460	100	200	
HZ:		60	60	60	60	60	50	50	
Efficiency:	@ Rated Load								
Power Factor:	@ Rated Load								
Amps:	@ No Load								
	@ Rated Load								
	@ Service Factor								
	@ Locked Rotor								
Torques:	Bead Down								
	Locked Rotor								
	Pull-Up								
	Rated Load								
	Service Factor								
Watts:	@ Rated Load								
Temperature Rise:	@ Rated Load								
	@ Service Factor								
					DRAWING NO. PAGE 1 of 1		REV.		
					30PT62		-		

Dayton Electric Mfg. Co. Lake Forest, IL 60045 USA

# Performance Data



30PT62

REV.  
-

Dayton Manufacturing Company

Motor Description

Model: T055JXCMD146501

Motor ID: 2 of 5

Poles: 4

Volts: 115/208-230

Frequency: 60

HP: 1/2

Speed: 1725

Phase: 1

Protector:

Test Conditions

Test Type: Start

Test Number: 12

Poles: 4

Volts: 115

Hz: 60

Rotation:

Special Cond:

Speed Conn:

TestBoard: Amps Performance Fixture #3

Run Cap: 0

Start Cap: 0µfd

Environment: 19.8 Deg C 54 % RH 993 hPa

Tested: 10/11/2013 1:48:04 PM

Tested By: Sharp, Gerald

Gear Ratio: 1:1

Bearing Friction: -0.37 Oz-Ft

Windage Torque: -1.36 Oz-Ft

Special Points	Vline (V)	Iline (A)	Watts	RPM	Tq (Oz-ft)	HP	Eff (%)	PF (%)
	115.0	42.73	4873	13	107.30	0.016	0.2	99.2
	115.0	42.61	4855	40	106.91	0.051	0.8	99.1
PUT OZ-FT	115.0	42.49	4846	173	101.90	0.209	3.2	99.2
	115.0	42.52	4851	188	102.70	0.229	3.5	99.2
	115.0	42.51	4850	344	112.52	0.460	7.1	99.2
	115.0	42.49	4849	485	116.91	0.675	10.4	99.2
	115.0	42.41	4845	612	120.62	0.879	13.5	99.3
	115.0	42.38	4846	727	124.30	1.075	16.5	99.4
	115.0	42.46	4857	833	130.74	1.296	19.9	99.5
	115.0	42.47	4866	929	135.80	1.501	23.0	99.6
	115.0	42.50	4872	1017	140.06	1.696	26.0	99.7
	115.0	42.52	4874	1097	143.74	1.877	28.7	99.7
	115.0	42.58	4883	1170	146.88	2.046	31.3	99.7
	115.0	42.62	4894	1238	148.74	2.192	33.4	99.9
	115.0	42.66	4898	1300	149.71	2.317	35.3	99.8
	115.0	42.72	4905	1355	149.07	2.405	36.6	99.9
	115.0	42.73	4906	1406	146.96	2.461	37.4	99.8
	115.0	42.09	4813	1452	140.84	2.434	37.7	99.4
	115.0	17.32	1788	1478	75.41	1.327	55.4	89.7
	115.0	16.52	1743	1522	75.43	1.366	58.5	91.7
	115.0	15.29	1651	1562	74.58	1.387	62.7	93.9
	115.0	14.09	1552	1597	72.78	1.383	66.5	95.8
	115.0	12.93	1447	1627	69.49	1.346	69.4	97.3
	115.0	11.67	1326	1655	65.02	1.281	72.1	98.8
	115.0	10.46	1201	1680	59.41	1.188	73.8	99.8
	115.0	9.31	1076	1703	52.82	1.071	74.2	100.5
	115.0	8.27	954	1725	45.84	0.941	73.6	100.3
	115.0	6.90	787	1746	35.33	0.734	69.5	99.2
	115.0	5.85	641	1766	25.05	0.527	61.3	95.2
	115.0	4.46	462	1785	11.96	0.254	41.1	90.0
	115.0	3.14	289	1800	0.00	0.000	0.0	80.3

DRAWING NO. 30PT62

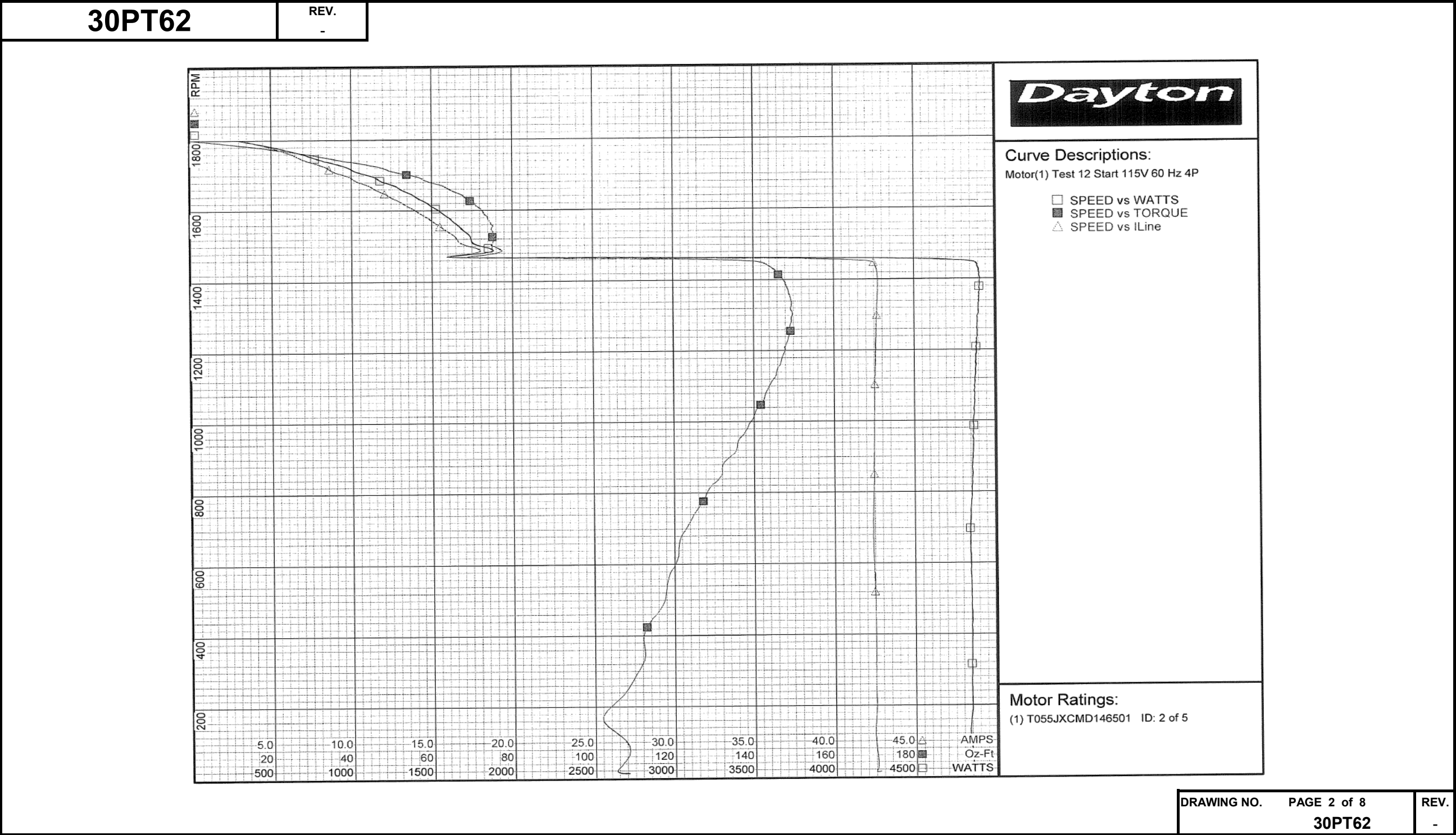
PAGE 1 of 8

REV. -

DRAWING NO.	PAGE 1 of 8	REV.
	30PT62	-

Dayton Electric Mfg. Co. Lake Forest, IL 60045 USA

Performance Data



Dayton Electric Mfg. Co. Lake Forest, IL 60045 USA



# Performance Data



30PT62

REV.

-

## Dayton Manufacturing Company

### Motor Description

Model: T055JXCMD146501  
Motor ID: 2 of 5  
Poles: 4  
Volts: 115/208-230  
Frequency: 60  
HP: 1/2  
Speed: 1725  
Phase: 1  
Protector:

### Test Conditions

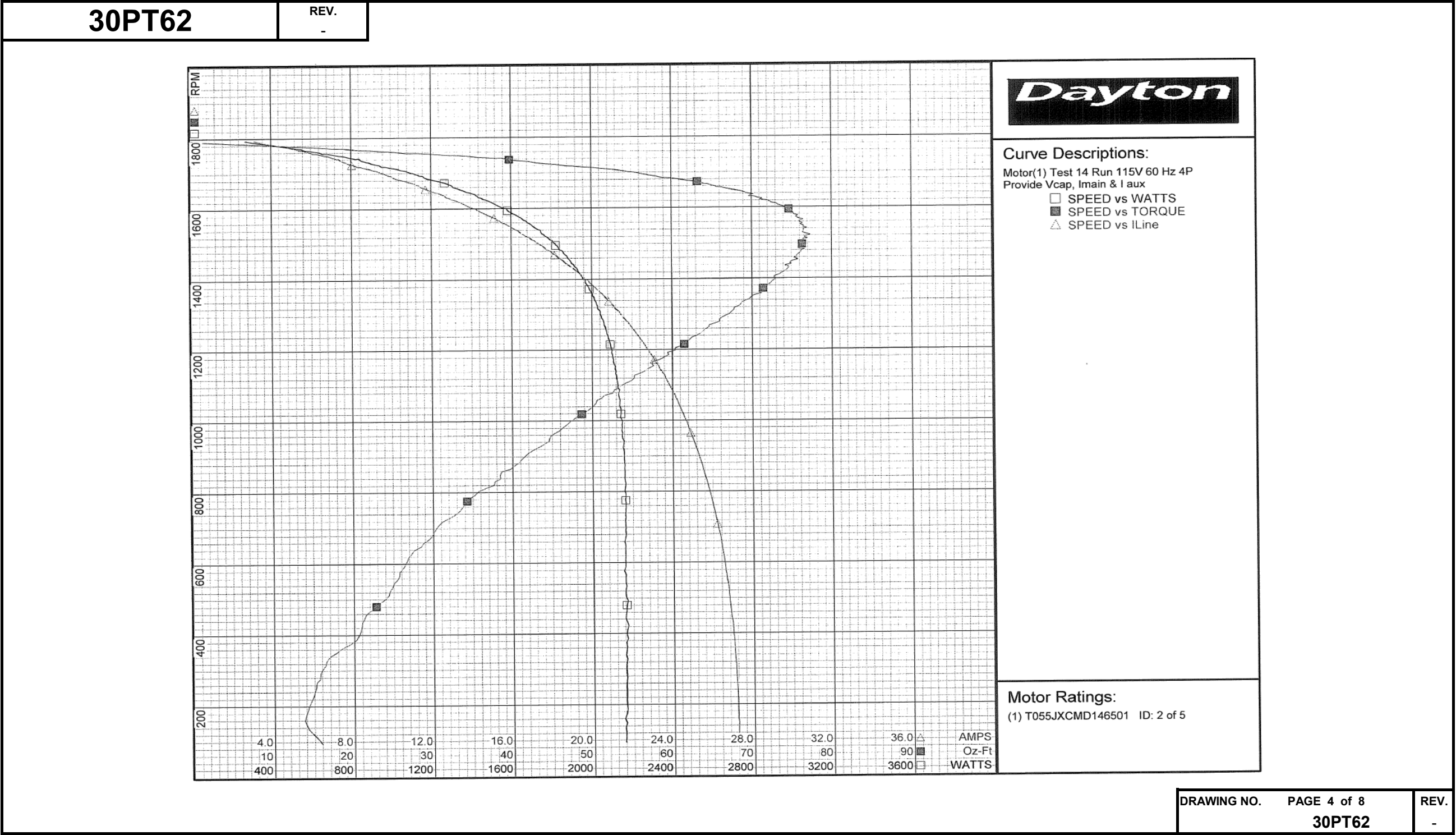
Test Type: Run  
Test Number: 14  
Poles: 4  
Volts: 115  
Hz: 60  
Rotation:  
Special Cond: Provide Vcap, Imain & Iaux  
Speed Conn:  
TestBoard: Amtps Performance Fixture #3  
Run Cap: 0  
Start Cap: 0μfd  
Environment: 19.9 Deg C 54 % RH 994 hPa  
Tested: 10/11/2013 1:02:25 PM  
Tested By: Sharp, Gerald  
Gear Ratio: 1:1  
Bearing Friction: -0.38 Oz-Ft  
Windage Torque: -1.38 Oz-Ft

Special Points	Vline (V)	Vaux (V)	Vcap (V)	Iline (A)	Imain (A)	Iaux (A)	Watts	RPM	Tq (Oz-ft)	HP	PF (%)	Cap
	115.0	200.3	231.4	3.18	2.31	5.238	269	1793	0.00	0.000	73.8	60.0
	115.0	196.8	222.7	4.76	0.43	5.029	485	1775	14.63	0.309	88.6	59.9
0.5 HP	115.0	193.2	215.6	5.76	0.93	4.876	614	1763	23.83	0.500	92.7	60.0
24.3 OZ-FT	115.0	193.0	215.2	5.82	1.02	4.867	622	1762	24.30	0.510	93.0	60.0
	115.0	189.8	210.1	6.41	1.82	4.755	700	1755	29.74	0.621	95.0	60.0
30.4 OZ-FT	115.0	189.4	209.4	6.48	1.92	4.741	711	1754	30.40	0.635	95.4	60.1
0.625 HP	115.0	189.7	209.9	6.43	1.85	4.751	703	1754	29.93	0.625	95.1	60.0
	115.0	178.4	196.1	7.54	3.54	4.435	859	1735	40.65	0.840	99.0	60.0
1725 RPM	115.0	173.8	190.6	8.01	4.26	4.300	921	1725	44.29	0.909	100.1	59.9
	115.0	170.2	185.4	8.64	5.00	4.183	996	1715	48.96	1.000	100.2	59.9
	115.0	159.7	173.7	9.91	6.77	3.910	1143	1692	57.07	1.150	100.3	59.7
	115.0	151.1	163.3	11.28	8.52	3.674	1293	1667	63.92	1.268	99.7	59.7
	115.0	142.8	154.3	12.44	9.98	3.476	1409	1642	69.18	1.352	98.5	59.8
	115.0	134.5	146.2	13.53	11.40	3.302	1510	1616	72.34	1.392	97.0	59.9
	115.0	126.3	138.8	14.66	12.85	3.133	1607	1585	75.16	1.419	95.3	59.9
	115.0	118.6	132.0	15.78	14.25	2.988	1699	1554	76.39	1.413	93.6	60.1
BDT OZ-FT	115.0	111.4	126.6	16.73	15.46	2.873	1769	1522	77.33	1.401	91.9	60.2
	115.0	111.1	126.2	16.84	15.59	2.863	1779	1519	76.86	1.390	91.9	60.2
	115.0	103.7	121.0	17.87	16.88	2.759	1850	1482	76.64	1.352	90.0	60.5
	115.0	96.6	116.9	18.85	18.12	2.672	1911	1441	74.94	1.285	88.2	60.6
	115.0	89.7	113.1	19.80	19.30	2.607	1969	1399	72.97	1.215	86.5	61.2
	115.0	83.6	111.1	20.67	20.41	2.563	2011	1349	69.91	1.123	84.6	61.2
	115.0	77.1	109.4	21.51	21.47	2.527	2046	1296	66.72	1.029	82.7	61.3
	115.0	71.2	108.2	22.30	22.45	2.516	2079	1240	63.08	0.931	81.1	61.7
	115.0	65.6	107.8	23.04	23.37	2.514	2103	1179	58.99	0.828	79.4	61.9
	115.0	60.5	107.8	23.73	24.19	2.517	2124	1112	54.83	0.726	77.8	61.9
	115.0	55.7	108.7	24.34	24.96	2.532	2135	1040	50.12	0.621	76.3	61.8
	115.0	51.2	109.6	24.90	25.67	2.570	2150	965	45.29	0.520	75.1	62.2
	115.0	47.4	110.9	25.41	26.32	2.608	2159	883	40.77	0.428	73.9	62.4
	115.0	43.4	112.5	25.85	26.91	2.646	2164	793	35.24	0.333	72.8	62.4
	115.0	40.2	114.5	26.23	27.42	2.689	2163	699	30.40	0.253	71.7	62.3
	115.0	37.4	116.4	26.56	27.84	2.717	2161	598	26.45	0.188	70.8	61.9
	115.0	35.5	117.9	26.78	28.16	2.761	2170	492	23.35	0.137	70.4	62.1
	115.0	32.7	120.1	27.01	28.49	2.795	2162	374	19.49	0.087	69.6	61.7
	115.0	30.7	122.0	27.14	28.71	2.835	2162	252	15.20	0.046	69.3	61.7
	115.0	29.2	124.6	27.19	28.87	2.899	2158	121	14.82	0.021	69.0	61.7

DRAWING NO.	PAGE 3 of 8	REV.
30PT62		-

Dayton Electric Mfg. Co. Lake Forest, IL 60045 USA

Performance Data



Dayton Electric Mfg. Co. Lake Forest, IL 60045 USA

# Performance Data

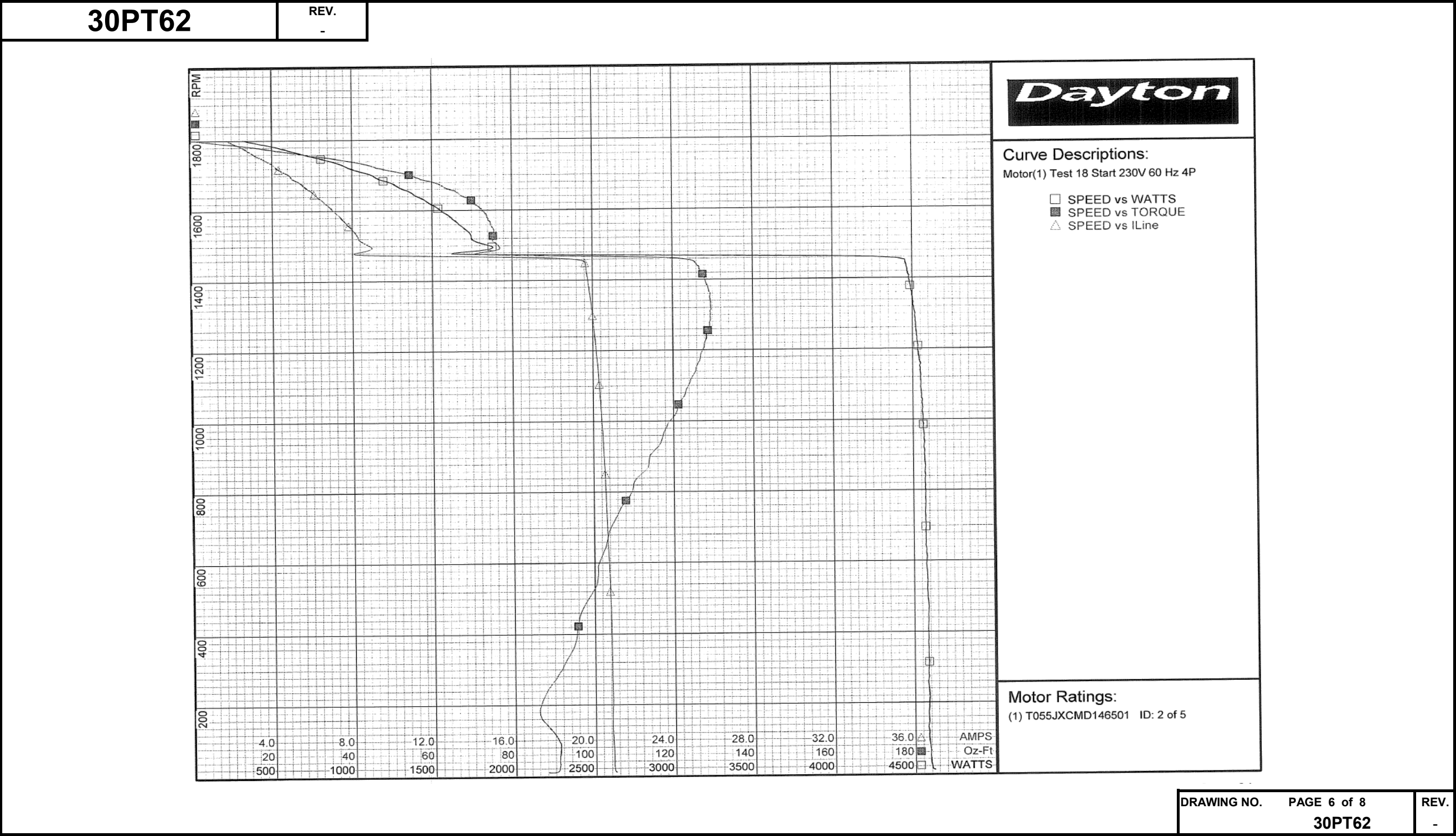


30PT62		REV. -									
Dayton Manufacturing Company											
Motor Description				Test Conditions							
Model:		T055JXCMD146501		Test Type:		Start		Run Cap:		0	
Motor ID:		2 of 5		Test Number:		18		Start Cap:		0µfd	
Poles:		4		Poles:		4		Environment:		20.1 Deg C 57 % RH 996 hPa	
Volts:		115/208-230		Volts:		230		Tested:		10/11/2013 8:51:17 AM	
Frequency:		60		Hz:		60		Tested By:		Sharp, Gerald	
HP:		1/2		Rotation:				Gear Ratio:		1:1	
Speed:		1725		Special Cond:				Bearing Friction:		-0.37 Oz-Ft	
Phase:		1		Speed Conn:				Windage Torque:		-1.42 Oz-Ft	
Protector:				TestBoard:		Amps Performance		Fixture #3			
Special Points		Vline (V)	Iline (A)	Watts	RPM	Tq (Oz-ft)	HP	Eff (%)	PF (%)		
		230.0	21.01	4618	9	88.21	0.010	0.2	95.6		
		230.0	20.92	4594	40	90.96	0.043	0.7	95.5		
PUT OZ-FT		230.0	20.86	4587	187	85.99	0.192	3.1	95.6		
		230.0	20.86	4587	187	85.99	0.192	3.1	95.6		
		230.0	20.84	4586	343	93.72	0.382	6.2	95.7		
		230.0	20.80	4587	485	97.58	0.563	9.2	95.9		
		230.0	20.72	4580	613	101.60	0.741	12.1	96.1		
		230.0	20.63	4573	727	105.48	0.913	14.9	96.4		
		230.0	20.57	4571	832	110.33	1.093	17.8	96.6		
		230.0	20.49	4567	929	116.18	1.284	21.0	96.9		
		230.0	20.40	4559	1017	120.35	1.457	23.8	97.2		
		230.0	20.31	4549	1098	123.75	1.617	26.5	97.4		
		230.0	20.22	4541	1170	126.64	1.764	29.0	97.7		
		230.0	20.10	4524	1238	128.41	1.892	31.2	97.9		
		230.0	19.99	4517	1299	129.39	2.001	33.1	98.2		
		230.0	19.88	4497	1355	129.34	2.087	34.6	98.3		
		230.0	19.76	4481	1406	127.96	2.142	35.7	98.6		
		230.0	19.62	4454	1452	125.40	2.168	36.3	98.7		
		230.0	8.33	1710	1483	73.93	1.305	56.9	89.3		
		230.0	8.29	1746	1525	76.05	1.380	59.0	91.6		
		230.0	7.72	1663	1563	74.63	1.389	62.3	93.7		
		230.0	7.12	1564	1597	72.91	1.386	66.1	95.5		
		230.0	6.54	1460	1628	69.85	1.354	69.2	97.0		
		230.0	5.97	1351	1655	65.80	1.296	71.6	98.4		
		230.0	5.37	1228	1681	60.02	1.201	73.0	99.5		
		230.0	4.81	1111	1703	53.53	1.085	72.9	100.3		
		230.0	4.16	961	1725	45.24	0.929	72.1	100.4		
		230.0	3.59	821	1746	36.37	0.756	68.6	99.6		
		230.0	2.96	658	1764	24.89	0.523	59.3	96.6		
		230.0	2.35	490	1784	12.65	0.269	40.9	90.7		
		230.0	1.72	319	1800	0.00	0.000	0.0	80.8		
DRAWING NO. PAGE 5 of 8										REV.	
30PT62										-	

Dayton Electric Mfg. Co. Lake Forest, IL 60045 USA



Performance Data





# Performance Data



30PT62		REV. -											
Dayton Manufacturing Company													
Motor Description				Test Conditions									
Model:		T055JXCMD146501		Test Type:		Run		Run Cap:		0			
Motor ID:		2 of 5		Test Number:		20		Start Cap:		0μfd			
Poles:		4		Poles:		4		Environment:		20.1 Deg C 57 % RH 996 hPa			
Volts:		115/208-230		Volts:		230		Tested:		10/11/2013 8:36:37 AM			
Frequency:		60		Hz:		60		Tested By:		Sharp, Gerald			
HP:		1/2		Rotation:				Gear Ratio:		1:1			
Speed:		1725		Special Cond:		Provide Vcap, Imain & I aux				Bearing Friction:		-0.42 Oz-Ft	
Phase:		1		Speed Conn:				Windage Torque:		-1.56 Oz-Ft			
Protector:				TestBoard:		Amps Performance Fixture #3							
Special Points	Vline (V)	Vaux(V)	Vcap (V)	Iline (A)	Imain (A)	Iaux (A)	Watts	RPM	Tq (Oz-ft)	HP	PF (%)	Cap	
	230.0	236.7	230.4	1.674	3.649	5.246	288	1795	0.00	0.000	74.9	60.4	
	230.0	238.3	221.3	2.459	2.587	5.030	507	1776	14.72	0.311	89.7	60.3	
24.3 OZ-FT	230.0	237.9	213.7	2.946	1.990	4.866	640	1763	24.30	0.510	94.5	60.4	
0.5 HP	230.0	238.0	214.1	2.922	2.018	4.875	634	1764	23.81	0.500	94.3	60.4	
	230.0	237.0	209.8	3.151	1.776	4.779	695	1757	28.14	0.589	95.9	60.4	
30.4 OZ-FT	230.0	236.1	207.4	3.263	1.679	4.725	726	1753	30.40	0.635	96.7	60.4	
0.625 HP	230.0	236.2	208.0	3.239	1.699	4.737	719	1754	29.93	0.625	96.5	60.4	
	230.0	233.3	197.3	3.754	1.399	4.499	853	1736	38.84	0.803	98.8	60.5	
1725 RPM	230.0	230.9	189.5	4.202	1.436	4.315	961	1725	45.59	0.936	99.4	60.4	
	230.0	228.7	185.1	4.424	1.651	4.214	1015	1717	48.94	1.001	99.7	60.4	
	230.0	223.9	175.2	4.961	2.324	3.987	1136	1696	56.11	1.133	99.6	60.4	
	230.0	218.4	164.6	5.636	3.246	3.745	1280	1671	63.25	1.258	98.8	60.3	
	230.0	213.5	155.2	6.274	4.122	3.536	1408	1645	68.63	1.344	97.6	60.4	
	230.0	208.9	147.3	6.838	4.924	3.360	1515	1618	72.29	1.393	96.3	60.5	
	230.0	203.9	139.7	7.423	5.751	3.191	1617	1589	75.16	1.422	94.7	60.6	
	230.0	198.6	132.7	7.996	6.583	3.041	1709	1557	76.61	1.420	93.0	60.8	
BDT OZ-FT	230.0	195.8	129.1	8.316	7.045	2.963	1759	1537	77.78	1.423	92.0	60.9	
	230.0	193.6	126.7	8.535	7.362	2.912	1790	1522	77.64	1.407	91.2	60.9	
	230.0	188.4	121.6	9.059	8.127	2.799	1862	1485	77.01	1.361	89.3	61.1	
	230.0	183.3	117.2	9.553	8.858	2.708	1926	1445	75.65	1.301	87.7	61.3	
	230.0	178.2	113.5	10.025	9.553	2.633	1979	1401	73.80	1.230	85.8	61.5	
	230.0	173.2	110.7	10.482	10.218	2.578	2027	1353	71.16	1.146	84.1	61.8	
	230.0	168.4	108.7	10.909	10.846	2.539	2063	1301	67.87	1.051	82.2	62.0	
	230.0	163.6	107.4	11.308	11.432	2.516	2096	1245	64.21	0.952	80.6	62.1	
	230.0	158.9	106.7	11.680	11.982	2.505	2123	1184	60.14	0.848	79.0	62.3	
	230.0	154.4	106.6	12.018	12.488	2.506	2138	1119	55.77	0.743	77.3	62.3	
	230.0	150.1	107.0	12.331	12.958	2.518	2155	1048	51.08	0.637	76.0	62.4	
	230.0	145.9	107.7	12.616	13.389	2.539	2166	972	46.63	0.540	74.7	62.5	
	230.0	142.0	108.9	12.869	13.782	2.574	2174	891	41.64	0.442	73.4	62.7	
	230.0	137.9	110.4	13.097	14.146	2.607	2178	802	36.77	0.351	72.3	62.7	
	230.0	134.0	112.0	13.298	14.469	2.642	2178	708	31.20	0.263	71.2	62.5	
	230.0	130.6	113.8	13.463	14.743	2.674	2177	607	26.87	0.194	70.3	62.3	
	230.0	127.4	115.5	13.586	14.950	2.703	2174	500	23.99	0.143	69.6	62.1	
	230.0	124.2	117.3	13.693	15.156	2.749	2180	385	20.73	0.095	69.2	62.2	
	230.0	121.0	119.0	13.757	15.309	2.787	2177	264	15.49	0.049	68.8	62.1	
	230.0	117.2	121.5	13.777	15.428	2.839	2171	134	14.24	0.023	68.5	62.0	

DRAWING NO.

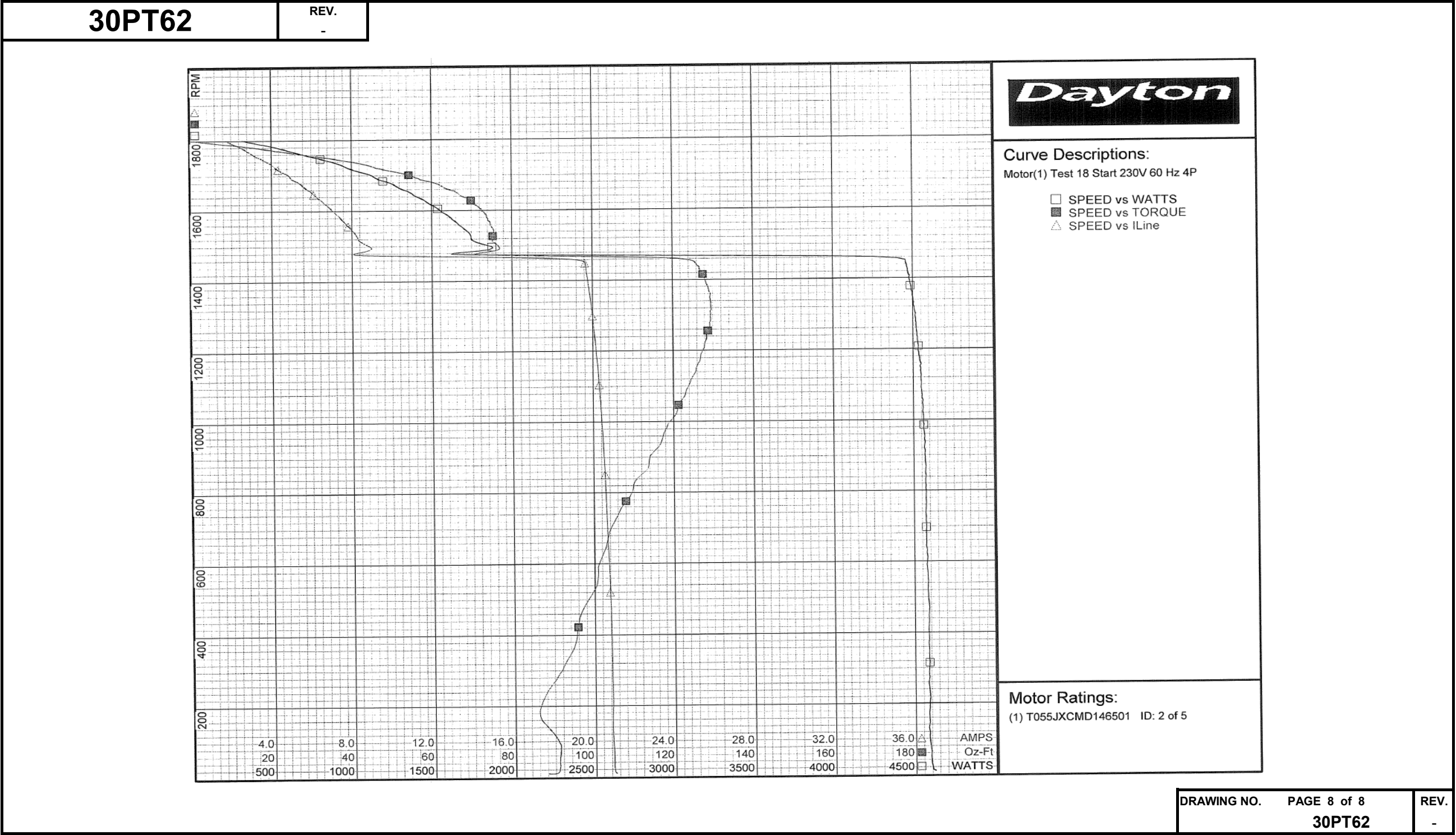
PAGE 7 of 8

30PT62

REV.

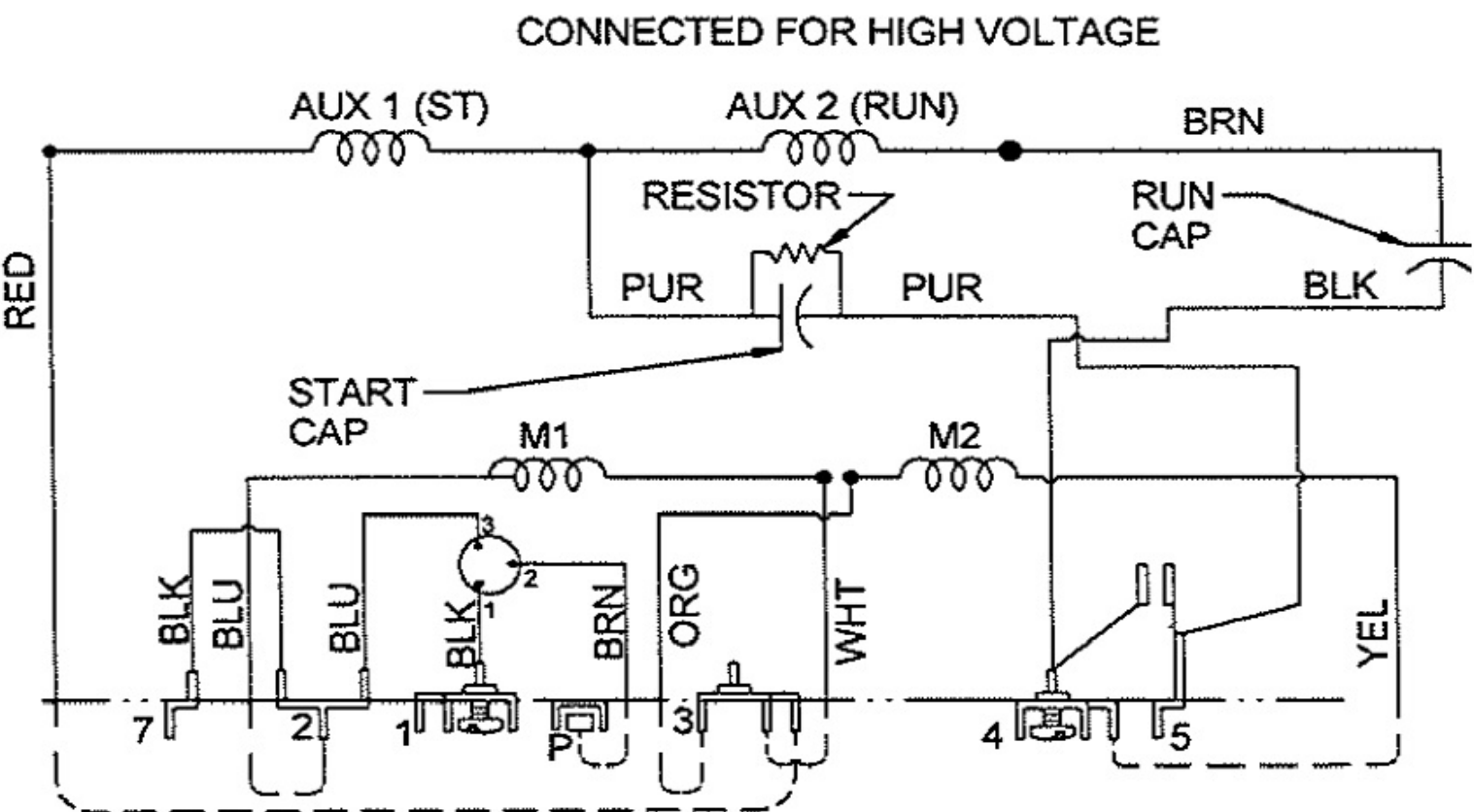
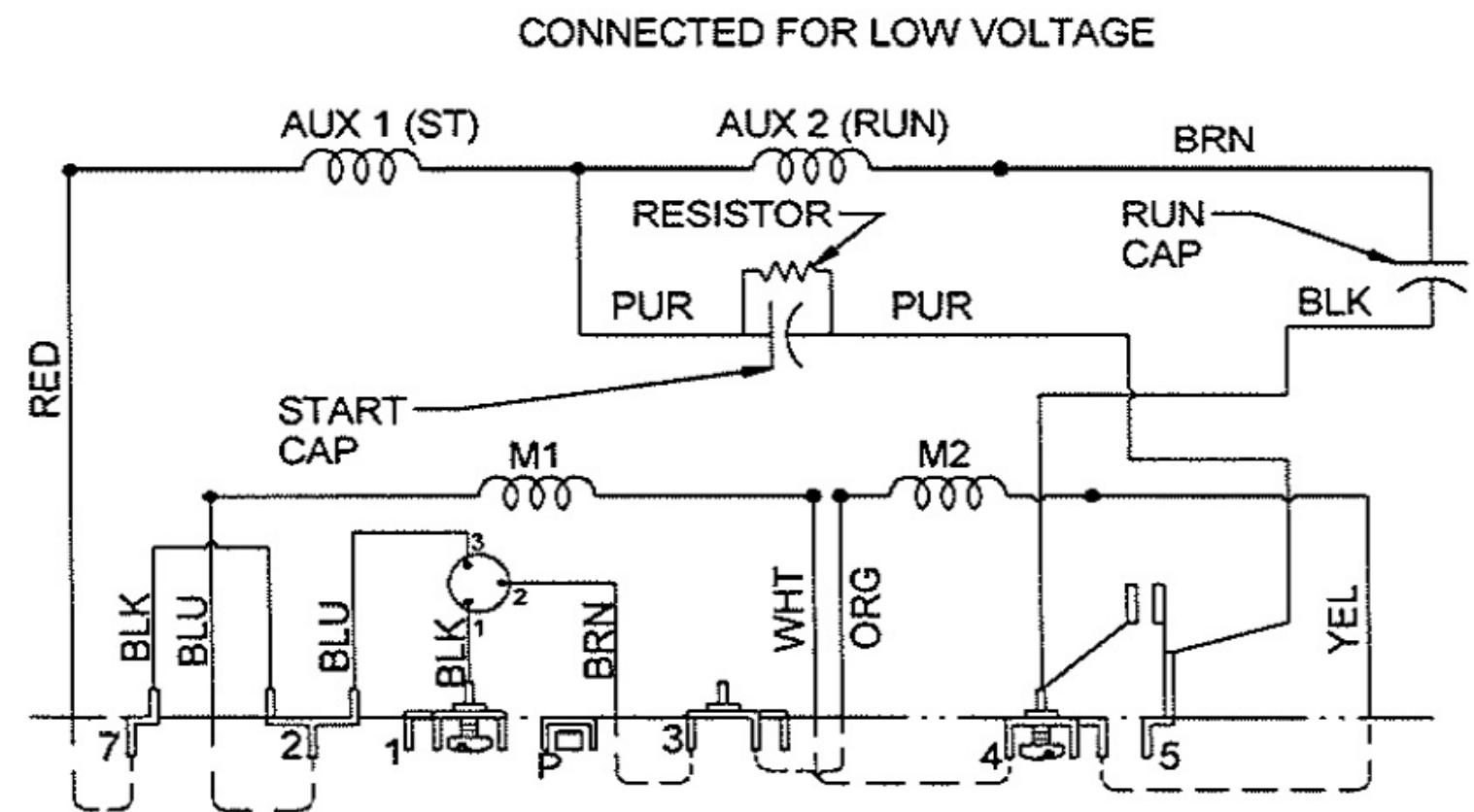
-

Performance Data



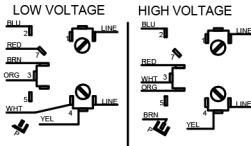
30PT62

REV.  
1



TO REVERSE ROTATION INTERCHANGE  
BLUE WITH WHITE AND ORANGE WITH YELLOW



**Dayton**<sup>®</sup>**INDUSTRIAL MOTOR**Part No **30PT62****HP:** 1/2**PH:** 1**VOLTS:** 115/230**HZ:** 60**AMPS:** 5.0/2.6**FR:** 56**RPM:** 1725**INS CL:** B**DUTY:** CONT**AMB:** 40 °C**SF:** 1.25**SFA:** 5.9/3.0**KVA CODE:** L**ENCL:** ODP**THERMALLY PROTECTED:** AUTOMFG. NO. PROT. CODE:  04580AVG. F.L.  
EFF. 76.2**MTR REF:** T55JXCMD-1465**USABLE FOR 208V AT. 1.0 S.F.****NEMA**  
**Premium**<sup>™</sup>**Disconnect Power Before Making Any  
Electrical Connections or Changes****CONNECTIONS**MOTOR IS CCW ROTATION LEAD END  
TO REVERSE ROTATION INTERCHANGE  
BLUE WITH WHITE AND ORANGE WITH YELLOW  
E37403  
258501

Mfd for Dayton Electric Mfg. Co., Lake Forest, IL 60045 USA

Made in Mexico