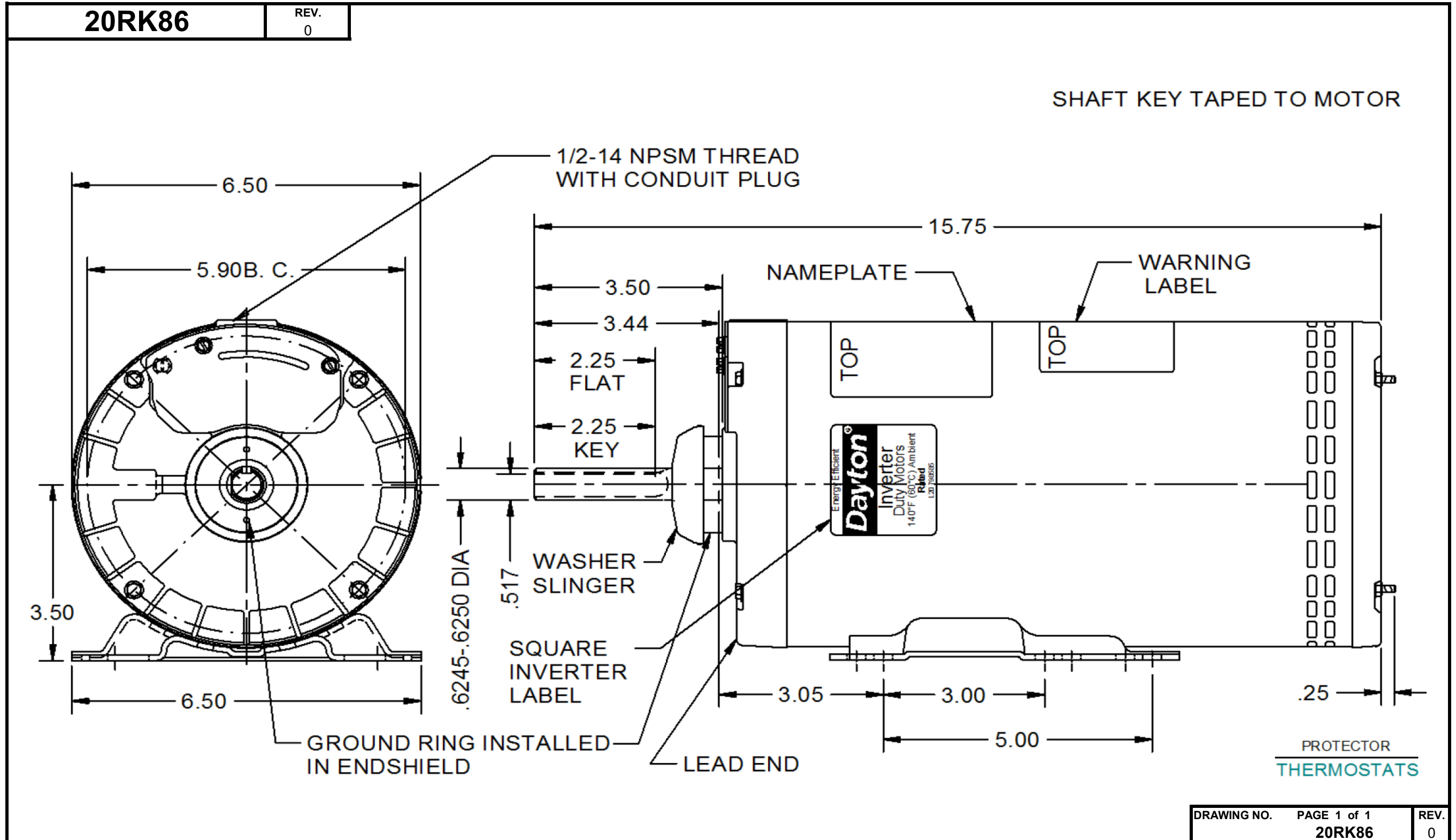


Dimensional Drawing



Dayton Electric Mfg. Co. Lake Forest, IL 60045 USA

Performance Data



20RK86

REV.
-

MOTOR PERFORMANCE

MODEL NO.	CATALOG NO.	PHASE	TYPE	FRAME
20RK86	20RK86	3	DI	56H
ORDER NO.		NA	LINE NO.	
MPI:			136182	136183
HP:			1.5	1.5
POLES:			8	8
VOLTS:			460	230
HZ:			60	60
SERVICE FACTOR:			1.15	1.15
EFFICIENCY (%):				
S.F.			70.6	70.6
FULL			74	70
3/4			75.6	75.7
1/2			73.1	75.3
1/4			61.6	65.9
POWER FACTOR (%):				
S.F.			66.1	66.1
FULL			61.3	67.4
3/4			51.8	58
1/2			39	44.8
1/4			24.4	27.7
NO LOAD			7.6	7.7
LOCKED ROTOR			52.3	50.7
AMPS:				
S.F.			3.5	6.9
FULL			3.1	6.6
3/4			2.7	5.3
1/2			2.5	4.6
1/4			2.3	4.2
NO LOAD			2.4	4.3
LOCKED ROTOR			10.9	19.1
NEMA CODE LETTER			G	E
NEMA DESIGN LETTER			B	B
FULL LOAD RPM			835	800
NEMA NOMINAL / EFFICIENCY (%)			74	70
GUARANTEED EFFICIENCY (%)			70	66
MAX KVAR			1.6	1.3
AMBIENT (°C)			40	40
ALTITUDE (FASL)			3300	3300
SAFE STALL TIME-HOT (SEC)			30	30
SOUND PRESSURE (DBA @ 1M)			0	0
TORQUES:				
BREAKDOWN{% F.L.}			238	189
LOCKED ROTOR{% F.L.}			174	133
FULL LOAD{LB-FT}			9.5	9.8

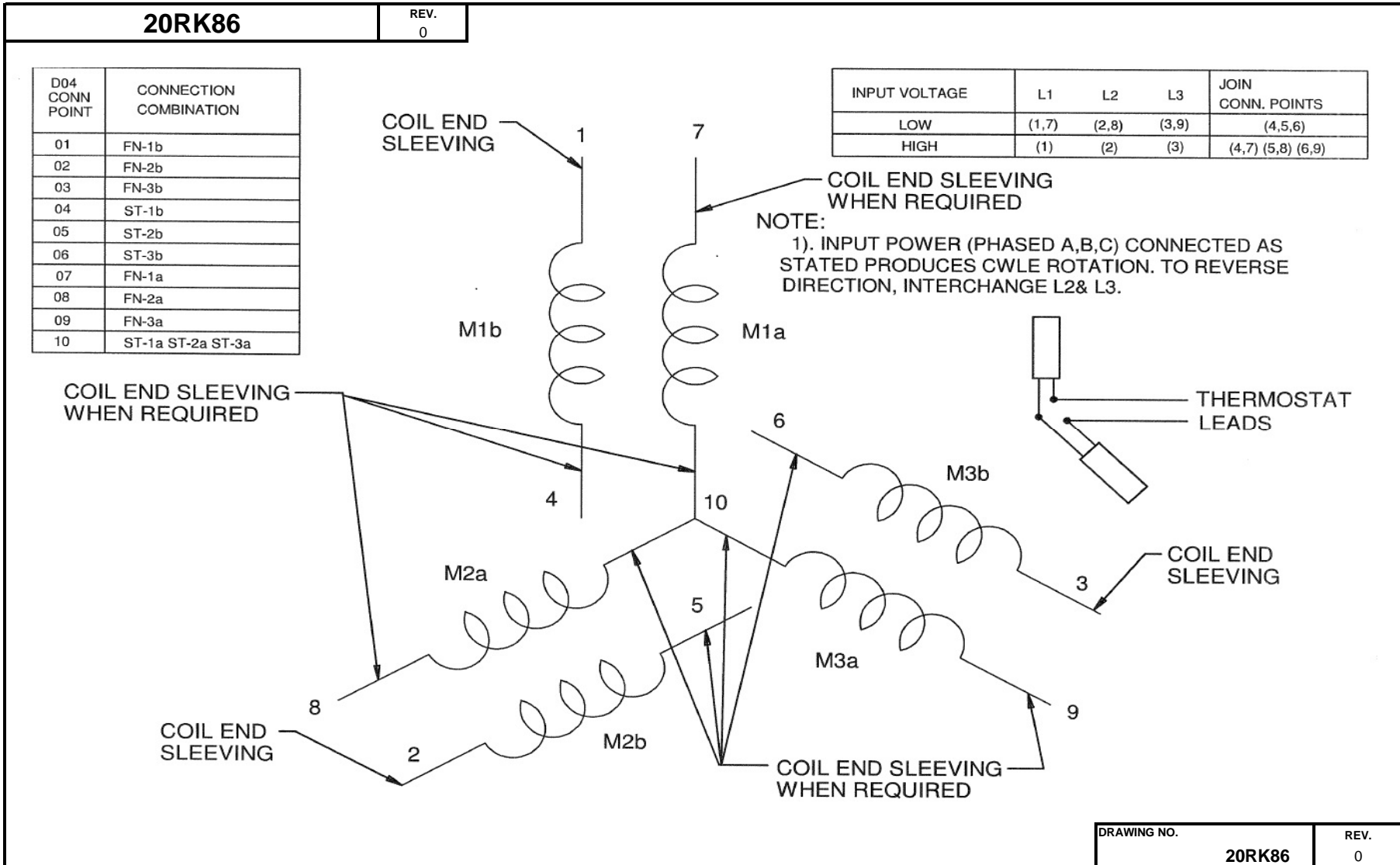
NEMA Nominal and Guaranteed Efficiencies are up to 3,300 feet above sea level and 25 ° C ambient

The Above Data Is Typical, Sinewave Power Unless Noted Otherwise

DRAWING NO.	PAGE 1 of 1	REV.
	20RK86	-

Dayton Electric Mfg. Co. Lake Forest, IL 60045 USA

Wiring Diagram



Dayton®Part No. **20RK86****CONDENSER
FAN MOTOR**

HP: 1 1/2

PH: 3

VOLTS: 208 - 230 / 460

HZ: 60

AMPS: 7.2 - 7.2 / 3.6

FR: 56H

RPM: 850

INS CL: F

DUTY: CONT

AMB: 60 °C

SF: 1.15

SFA:

KVA CODE: K

ENCL: OPAO

MTR REF: DX60

THERMOSTATS PROT. CODE 7A073

ID #

S.F. AT 208 VOLTS IS 1.0

MFG NO

Disconnect Power Before Making Any Electrical
Connections or Changes

CONNECTIONS

460 VOLTS



230 VOLTS

(2) BLACK LEADS - THERMOSTAT
TO REVERSE ROTATION INTERCHANGE
ANY TWO LINE LEADS

Mfd for Dayton Electric Mfg. Co., Lake Forest, IL 60045 USA

MADE IN MEXICO