



# Electrical Products within Vertical Applications

**PANDUIT**<sup>®</sup>

infrastructure for a connected world

## From Breaking Ground to Routine Maintenance and Repair Panduit Products Impact Your Entire Project Lifecycle Through Multiple Vertical Applications

### Oil and Gas:

The world's appetite for energy grows every day, and oil and gas are still the best options for meeting global demand. Faced with the need to explore in challenging locations, integrate new oil sands and shale capabilities, meet updated safety protocols, and identify new technologies to handle remote environments, energy producers are looking for partners who can help them keep up with changing business conditions and goals.



### Shipbuilding:

Shipbuilders focusing on ultimate reliability and safety while facing constant cost containment pressures, are looking into ways to increase productivity, minimize unscheduled maintenance, extend global availability and lower overhead expenses.



### Mining and Minerals:

As the global demand on natural resources continues to increase, efficiency and productivity requirements are pushing all mining systems and components to the limit. Site and operator safety are also extremely important as exposure to harsh chemicals, abrasive environments, and extreme temperature conditions are consistently present in this hectic environment.



### Food and Beverage:

Food and beverage manufacturers are faced with countless product safety, quality and manufacturing challenges. Maximizing productivity while reducing downtime requires a robust integrated electrical infrastructure that can deliver optimum productivity, reliability and profitability.



### Pulp and Paper:

From sawmill operations through the manufacturing of the final wood and paper, the pulp, paper and wood industry comprises over 3,500 operational plants worldwide. The pulping process occurs in a harsh environment and is exposed to high cooking temperatures and a variety of chemicals that require high quality of maintenance, repair and operation products to protect people and infrastructure to ultimately eliminate downtime and improve productivity.



### Water/Wastewater:

Water treatment facilities are critical for maintaining public sanitation and a healthy environment. Whether the facility treats industrial and residential wastewater to remove impurities, or treats fresh water for consumption, these facilities rely on robust solutions for dependable continuous operation within harsh environments.



### Solar:

The world increasingly relies on clean, renewable energy sources, and solar power has proven to be a smart choice for the future. Panduit solutions help minimize the number of suppliers needed to complete your supply chain and addresses today's most pressing solar power issues.



## Table of Contents

<b>Cable Ties</b> .....	<b>3 – 4</b>
<b>Abrasion Protection</b> .....	<b>5</b>
<b>Terminals, Butt Splices and Disconnects</b> .....	<b>6 – 8</b>
<b>Wire Accessories</b> .....	<b>9</b>
<b>Wiring Duct</b> .....	<b>10 – 11</b>

## Cable Ties

**Built for durability:** a wide range of sizes, styles and materials for fastening, bundling, clamping, and identifying in a variety of applications.



Panduit Part Number Std. Pkg.	Panduit Part Number Bulk Pkg.	Grainger Part Number Bulk Pkg.	Description	Std. Pkg. Qty.	Bulk Pkg. Qty.
<b>Dome-Top® Barb Ty Cable Ties</b>					
BT1MG-C	BT1MG-M	2CMV2	4" 18 Tensile Natural nylon 6.6 Miniature Dome-Top® Barb-Ty Cable Ties with metal locking barb.	100	1000
BT1MG-C0	BT1MG-M0	2CMV3	4" 18 lb. Tensile Black UV resistant nylon 6.6 Miniature Dome-Top® Barb-Ty Cable Ties with metal locking barb.	100	1000
BT1.5IG-C	BT1.5IG-M	2CMW9	6.1" 40 lb. Tensile Natural nylon 6.6 Intermediate Dome-Top® Barb-Ty Cable Tie.	100	1000
BT1.5IG-C0	BT1.5IG-M0	2CMX1	6.1" 40 lb. Tensile Black UV resistant nylon 6.6 Intermediate cable tie with metal locking barb.	100	1000
BT2SG-C	BT2SG-M	2CMY7	8" 50 lb. Tensile Natural nylon 6.6 Standard Dome-Top® Barb-Ty Cable Ties with metal locking barb.	100	1000
BT2SG-C	BT2SG-M0	2CMY8	8" 50 lb. Tensile Black UV resistant nylon 6.6 Miniature Dome-Top® Barb-Ty Cable Ties with metal locking barb.	100	1000
BT4LHG-L	BT4LHG-TL	2CNA5	14.9" 120 lb. Tensile nylon 6.6 Light heavy duty Dome-Top® Barb-Ty Cable Tie with metal locking barb.	50	250
BT4LHG-L0	BT4LHG-TL0	2CNA6	14.9" 120 lb. Tensile nylon 6.6 Light heavy duty Dome-Top® Barb-Ty Cable Tie with metal locking barb.	50	250



<b>Loose Piece Cable Ties</b>					
PLT Part Number	Panduit Part Number	Grainger Part Number	Description	Std. Pkg. Qty.	Bulk Pkg. Qty.
PLT1MG-C	PLT1MG-M	21F262	3.9" 18 lb. Tensile Natural nylon 6.6 Miniature locking cable tie.	100	1000
PLT1MG-C0	PLT1M-M0	21F263	3.9" 18 lb. Tensile Black UV resistant nylon 6.6 locking cable tie.	100	1000
PLT1.5IG-C	—	21F257	5.6" 40 lb. Tensile Natural nylon 6.6 Intermediate locking cable tie.	100	1000
PLT1.5IG-C0	—	21F258	5.6" 40 lb. Tensile Black UV resistant nylon 6.6 Intermediate locking cable tie.	100	1000
PLT2SG-C	PLT2SG-M	21F274	7.4" 50 lb. Tensile Natural nylon 6.6 Standard locking cable tie.	100	1000
PLT2SG-C0	PLT2S-M0	21F275	7.4" 50 lb. Tensile Black UV resistant nylon 6.6 Standard locking cable tie.	100	1000
PLT6LHG-L	—	21F293	20.9" 175 lb. Tensile Black UV resistant nylon 6.6 heavy duty Pan-Ty® Locking Cable Tie.	50	250
PLT6LHG-L0	—	21F294	22.2" 250 lb. Tensile Black UV resistant nylon 6.6 extra heavy duty lashing locking cable tie.	50	250

PLT1MG-C86	—	9PAW8	3.9" 18 lb. Tensile Blue nylon 6.6 Miniature detectable cable tie.	100	—
PLT2IG-C86	—	8GVU9	8" 40 lb. Tensile Blue nylon 6.6 metal detectable Intermediate locking cable tie.	100	—
PLT2SG-C86	—	8TVX2	7.4" 50 lb. Tensile Blue nylon 6.6 Standard duty detectable cable tie.	100	—
PLT4SG-C86	—	8GVX1	14.4" 50 lb. Tensile Blue nylon 6.6 Standard duty detectable cable tie.	100	—

(continued on page 4)

**Cable Ties (continued)**



Panduit Part Number	Grainger Part Number	Description	Std. Pkg. Qty.
<b>Stainless Steel Cable Ties</b>			
MLT1SG-CP	2CMP8	5" 200 lb. Tensile 304 stainless steel self-locking cable tie.	100
MLT1SG-CP316	2CMR6	7.9" 450 lb. Tensile 304 stainless steel heavy duty self-locking cable tie.	100
MLT2SG-CP316	2CMR7	7.9" 200 lb. Tensile 304 stainless steel self-locking cable tie.	100
MLT2SG-CP	2CMP9	10.2" 450 lb. Tensile 304 stainless steel heavy duty cable tie.	100
MLT4SG-CP	2CMR1	10.2" 200 lb. Tensile 304 stainless steel self-locking cable tie.	100
MLT4SG-CP316	2CMR8	14.3" 450 lb. Tensile 304 stainless steel heavy duty cable tie.	100
MLT6SG-CP	2CMR2	20.5" 200 lb. Tensile 304 stainless steel self-locking cable tie.	100
MLT6SG-CP316	2CMR9	26.8" 200 lb. Tensile 304 stainless steel self-locking cable tie.	100
MLTFC4H-LP316	30PR71	Polyester coated stainless steel tie, AISI 316, Heavy, 14.3" length.	100
MLTC4H-LP316	2CMT2	Nylon coated stainless steel tie, AISI 316, Heavy, 14.3" length.	100
<b>Cable Tie Hand Tools</b>			
GS4MTG	2CMU8	MLT: Standard, Light-Heavy, and Heavy, type MLTC, MLTFC, and MLTD: Heavy, Used with custom length banding cross sections: Type MB: Standard and Heavy.	1
<b>Hook &amp; Loop Ties</b>			
HLS1.5SG-X0	2CNF1	6" 50 lb. Tensile Black nylon loop polyethylene hook cable tie.	10
HLS3SG-X0	2CNF2	12" 50 lb. Tensile Black nylon hook & loop nylon cinch ring cable tie.	10
HLS5SG-X0	2CNF3	18" 50 lb. Tensile Black nylon hook & loop nylon cinch ring cable tie.	10



## Abraision Protection

**Protect your connections:** insulate, harness and identify electrical/electronic components and cable with Panduit abrasion protection.

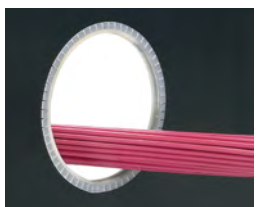


Panduit Part Number	Grainger Part Number	Description	Std. Pkg. Qty.
<b>Pan-Wrap™ Split Harness Wrap</b>			
PW50FG-T20	1LEY8	1/2" diameter x 200'/reel polyethylene Black split harness wrap.	1
PW75FG-C20	1LEY9	3/4" diameter x 100'/reel polyethylene Black split harness wrap.	1
PW100FG-C20	1LEZ1	1" (25.4mm), 100 ft. (30.5m) per reel, polyethylene, Black split harness wrap.	1
PW150FG-L20	1LEZ2	1.5" (38.1mm), 50 ft. (15.2m) per reel, polyethylene, Black split harness wrap.	1



<b>Pan-Wrap™ Tooling</b>			
PWTG50	1LEL5	Use with PW50F-series, Pan-Wrap™ Split Harness Wrap 0.50" (12.7mm), White.	1
PWTG75	1LEL6	Use with PW75F-series, Pan-Wrap™ Split Harness Wrap 0.75" (19.1mm), White.	1
PWTG100	1LEY6	Use with PW100F-series, Pan-Wrap™ Split Harness Wrap 1" (25.4mm), White.	1
PWTG150	1LEY7	Use with PW150F-series, Pan-Wrap™ Split Harness Wrap 1.50" (38.1mm), White.	1

<b>Braided Expandable Sleeving</b>			
SE50PFRG-CR0	1LLJ7	100' x 0.50" Black braided flame retardant expander sleeving.	1
SE50PG-CR0	1LLJ6	100' x 0.50" Black braided flame retardant expander sleeving.	1



<b>Grommet Edging</b>			
GEE62F-AG-C	1LLJ8	Slotted grommet edging with adhesive lined, 0.062" thickness, polyethylene, Natural.	1
GES62F-AG-C	1LLJ9	Solid grommet edging with adhesive lined (use on straight edges only), 0.062" thickness, polyethylene, Natural.	1
GEE99F-AG-C	1LLK1	Slotted grommet edging with adhesive lined, 0.099" thickness, polyethylene, Natural.	1
GES99F-AG-C	1LLK2	Solid grommet edging with adhesive lined (use one straight edges only), 0.099" thickness, polyethylene, Natural.	1

## Terminals, Butt Splices, and Disconnects

**Meeting application challenges at the lowest installed costs:** Designed and manufactured for superior electrical performance. A complete line of high quality insulated and non-insulated terminals, disconnects, splices, wire joints and ferrules offered in loose piece, reel feed, and various other configurations with worldwide availability.



Panduit Part Number	Grainger Part Number	Description	Std. Pkg. Qty.
<b>Butt Splices</b>			
<b>BSH14-QG</b>	<b>39AY19</b>	Heat shrink butt splice, 16 – 14 AWG wire range, standard package.	25
<b>BSN10-LG</b>	<b>39AY22</b>	Butt splice 12 – 10 AWG, nylon insulated, standard package.	50
<b>BSN14-CG</b>	<b>39AY23</b>	Butt splice 16 – 14 AWG, nylon insulated, standard package.	100
<b>BSN18-CG</b>	<b>39AY25</b>	Butt splice 22 – 18 AWG, nylon insulated, standard package.	100
<b>BSV10X-QG</b>	<b>39AY28</b>	Butt splice, 12 – 10 AWG, vinyl insulated, standard package.	25
<b>BSV14X-LG</b>	<b>39AY29</b>	Butt splice, 16 – 14 AWG, vinyl insulated, standard package.	50
<b>BSV18X-LYG</b>	<b>39AY31</b>	Butt splice, 22 – 18 AWG, vinyl insulated, standard package.	50
<b>Disconnects</b>			
<b>DNF10-250FI-LG</b>	<b>39AY41</b>	The vibration resistant female disconnect is made of brass and is tin-plated. It is fully insulated in a Yellow, nylon housing. It has a tab size of 0.250 x 0.032" (6.3 x 0.8mm) and supports a wire range of 12 – 10 AWG (4.0 – 6.0mm <sup>2</sup> ). It is 0.95" (24.1mm) long and 0.36" (9.1mm) wide. The disconnect has a funnel entry barrel configuration and an insulation grip sleeve barrel.	50
<b>DNF14-250-CG</b>	<b>39AY45</b>	The vibration resistant female disconnect is made of brass and is tin-plated. It is barrel insulated in a Blue, nylon housing. It has a tab size of 0.250 x 0.032" (6.3 x 0.8mm) and supports a wire range of 16 – 14 AWG (1.5-2 – 5mm <sup>2</sup> ). It is 0.83" (21.1mm) long and 0.29" (7.4mm) wide. The disconnect has a funnel entry barrel configuration and an insulation grip sleeve barrel.	100
<b>DNF14-250FIB-CG</b>	<b>39AY46</b>	The vibration resistant female disconnect is made of brass and is tin-plated. It is fully insulated in a Blue, nylon housing. It has a tab size of 0.250 x 0.032" (6.3 x 0.8mm) and supports a wire range of 16 – 14 AWG (1.5 – 2.5mm <sup>2</sup> ). It is 0.84" (21.3mm) long and 0.35" (8.9mm) wide. The disconnect has a funnel entry barrel configuration and a butted seam barrel.	100
<b>DNF14-250FIB-EG</b>	<b>39AY47</b>	The vibration resistant female disconnect is made of brass and is tin-plated. It is fully insulated in a Blue, nylon housing. It has a tab size of 0.250 x 0.032" (6.3 x 0.8mm) and supports a wire range of 16 – 14 AWG (1.5 – 2.5mm <sup>2</sup> ). It is 0.84" (21.3mm) long and 0.35" (8.9mm) wide. The disconnect has a funnel entry barrel configuration and a butted seam barrel.	20
<b>DNF14-250FI-LG</b>	<b>39AY49</b>	The vibration resistant female disconnect is made of brass and is tin-plated. It is fully insulated in a Blue, nylon housing. It has a tab size of 0.250 x 0.032" (6.3 x 0.8mm) and supports a wire range of 16 – 14 AWG (1.5 – 2.5mm <sup>2</sup> ). It is 0.94" (23.9mm) long and 0.36" (9.1mm) wide. The disconnect has a funnel entry barrel configuration and an insulation grip sleeve barrel.	50
<b>DNF14-250FIM-LG</b>	<b>39AY51</b>	The vibration resistant male tab disconnect is made of brass and is nickel-plated. It is fully insulated in a Blue, nylon housing. It has a tab size of 0.250 x 0.032" (6.3 x 0.8mm) and supports a wire range of 16 – 14 AWG (1.5 – 2.5 mm <sup>2</sup> ). It is 0.90" (22.9mm) long and 0.42" (10.7mm) wide. The disconnect has a funnel entry configuration and a butted seam barrel.	50
<b>DNF18-250FIB-CG</b>	<b>39AY56</b>	The vibration resistant female disconnect is made of brass and is tin-plated. It is fully insulated in a Red, nylon housing. It has a tab size of 0.250 x 0.032" (6.3 x 0.8mm) and supports a wire range of 22 – 18 AWG (0.5 – 1.0 mm <sup>2</sup> ). It is 0.84" (21.3mm) long and 0.35" (8.9mm) wide. The disconnect has a funnel entry barrel configuration and a butted seam barrel.	100
<b>DNF18-250FIB-MG</b>	<b>39AY57</b>	The vibration resistant female disconnect is made of brass and is tin-plated. It is fully insulated in a Red, nylon housing. It has a tab size of 0.250 x 0.032" (6.3 x 0.8mm) and supports a wire range of 22 – 18 AWG (0.5 – 1.0 mm <sup>2</sup> ). It is 0.84" (21.3mm) long and 0.35" (8.9mm) wide. The disconnect has a funnel entry barrel configuration and a butted seam barrel.	1000
<b>DNF18-250FIM-LG</b>	<b>39AY58</b>	The vibration resistant male tab disconnect is made of brass and is nickel-plated. It is fully insulated in a Red, nylon housing. It has a tab size of 0.250 x 0.032" (6.3 x 0.8mm) and supports a wire range of 22 – 18 AWG (0.5 – 1.0 mm <sup>2</sup> ). It is 0.90" (22.9mm) long and 0.42" (10.7mm) wide. The disconnect has a funnel entry barrel configuration and a butted seam barrel.	50
<b>DNF18-250FIM-LG</b>	<b>39AY64</b>	The vibration resistant, right angle style female disconnect is made of brass and is tin-plated. It is fully insulated in Red nylon. It has a tab size of 0.250 x 0.032" (6.3 x 0.8mm) and supports a wire range of 22 – 18 AWG (0.5 – 1.0 mm <sup>2</sup> ). It is 0.5" (14.7mm) long, 0.37" (9.4mm) wide, and has a depth of 0.60" (15.2mm). The disconnect has a funnel entry barrel configuration and a butted seam barrel.	50

## Terminals, Butt Splices, and Disconnects (continued)



Panduit Part Number	Grainger Part Number	Description	Std. Pkg. Qty.
<b>Ferrules</b>			
FSD75-8-DG	39AX60	Polypropylene insulated ferrules – single wire White DIN end sleeve, 20 AWG (0.50mm <sup>2</sup> ), 0.31"(8.0mm) pin length.	500
FSD77-8-DG	39AX67	Polypropylene insulated ferrules – single wire Red DIN end sleeve, 18 AWG (1.0mm <sup>2</sup> ), 0.31"(8.0mm) pin length.	500
FSD78-8-DG	39AX73	Polypropylene insulated ferrules – single wire Black DIN end sleeve, 16 AWG (1.5mm <sup>2</sup> ), 0.31"(8.0mm) pin length.	500
FSD80-8-DG	39AX78	Polypropylene insulated ferrules – single wire Blue DIN end sleeve, 14 AWG (2.5mm <sup>2</sup> ), 0.31"(8.0mm) pin length.	500
FSD80-12-DG	39AX76	Polypropylene insulated ferrules – single wire Blue DIN end sleeve, 14 AWG (2.5mm <sup>2</sup> ), 0.47"(12.0mm) pin length.	500
FSD81-12-CG	39AX81	Polypropylene insulated ferrules – single wire Gray DIN end sleeve, 12 AWG (4.0mm <sup>2</sup> ), 0.47"(12.0mm) pin length.	100
FSD82-12-CG	39AX83	Polypropylene insulated ferrules – single wire Yellow DIN end sleeve, 10 AWG (6.0mm <sup>2</sup> ), 0.47"(12.0mm) pin length.	100
FSD83-12-CG	39AX85	Polypropylene insulated ferrules – single wire Red DIN end sleeve, 8 AWG (10.0mm <sup>2</sup> ), 0.47"(12.0mm) pin length.	100
FSD84-18-CG	39AX88	Polypropylene insulated ferrules – single wire Blue DIN end sleeve, 6 AWG (16.0mm <sup>2</sup> ), 0.71"(18.0mm) pin length.	100
FTD75-8-DG	39AX90	Polypropylene insulated ferrules – twin wire White DIN end sleeve, 22 AWG (0.5mm <sup>2</sup> ), 0.31"(8.0mm) pin length.	500
FTD80-10-TLG	39AX97	Polypropylene insulated ferrules – twin wire Blue DIN end sleeve, 14 AWG (2.5mm <sup>2</sup> ), 0.39"(10.0mm) pin length.	250
KP-FSD2G	39AX97	Ferrule kit includes: #22 – 14 AWG insulated DIN ferrules. Case includes: 100 pieces each of FSD76-8, FSD77-8, FSD78-8 and 50 pieces each of FSD75-8 and FSD80-8.	1



<b>Wire Joints</b>			
JN418-212-CG	39AY84	(4) 18 – (2) 12 AWG Clear nylon wire joint.	100
JN418-212-DG	39AY85	(4) 18 – (2) 12 AWG Clear nylon insulated wire joint.	500



<b>Non-Insulated Ring Terminals</b>			
P10-10R-DG	39AY87	Ring terminal, 14 – 10 AWG, #10 stud size, non-insulated, bulk package.	500
P10-10R-LG	39AY88	Ring terminal, 14 – 10 AWG, #10 stud size, non-insulated, standard package.	50
P10-12R-L	39AY89	Ring terminal, 14 – 10 AWG, 1/2" stud size, non-insulated.	50
P10-14R-D	39AY90	Ring terminal, 14 – 10 AWG, 1/4" stud size, non-insulated, bulk package.	500
P10-14R-LG	39AY91	Ring terminal, 14 – 10 AWG, 1/4" stud size, non-insulated, standard package.	50
P14-10R-CG	39AZ01	Ring terminal, 18 – 14 AWG, #10 stud size, non-insulated, standard package.	100

(continued on page 8)

## Terminals, Butt Splices, and Disconnects (continued)



Panduit Part Number	Grainger Part Number	Description	Std. Pkg. Qty.
<b>Insulated Ring Terminals</b>			
PN10-10F-LG	39AZ45	Fork terminal, nylon insulated, 12 – 10 AWG, #10 stud size, standard package.	50
PN10-10R-LG	39AZ45	Ring terminal, 12 – 10 AWG, #10 stud size, nylon insulated, standard package.	50
PN10-14R-LG	39AZ51	Ring terminal, 12 – 10 AWG, 1/4" stud size, nylon insulated, standard package.	50
PN10-8F-LG	39AZ57	Fork terminal, nylon insulated, 12 – 10 AWG, #8 stud size, standard package.	50
PN10-8R-LG	39AZ59	Ring terminal, 12 – 10 AWG, #8 stud size, nylon insulated, standard package.	50
PN14-10F-CG	39AZ60	Fork terminal, nylon insulated, 18 – 14 AWG, #10 stud size, standard package.	100
PN14-10R-CG	39AZ61	Ring terminal, 18 – 14 AWG, #10 stud size, nylon insulated, standard package.	100



<b>Vinyl Insulated Ring Terminals</b>			
PV10-10F-LG	39AZ88	The fork terminal has vinyl insulation and funnel entry. The wire range is 14 – 10 AWG, and the stud size is #10.	50
PV10-10R-DG	39AZ89	Ring terminal, 12 – 10 AWG, #10 stud size, vinyl insulated, funnel entry, bulk package.	500
PV10-10R-LG	39AZ90	Ring terminal, 12 – 10 AWG, #10 stud size, vinyl insulated, funnel entry, standard package.	50
PV10-14R-LG	39AZ94	Ring terminal, 12 – 10 AWG, 1/4" stud size, vinyl insulated, funnel entry, standard package.	50
PV10-8F-LG	39CA04	Fork terminal, vinyl insulated, funnel entry, 12 – 10 AWG, #8 stud size, standard package.	50
PV10-8R-LG	39CA06	Ring terminal, 12 – 10 AWG, #8 stud size, vinyl insulated, funnel entry, standard package.	50
PV18-8F-CYG	39CA40	Fork terminal, vinyl insulated, funnel entry, 22 – 16 AWG, #8 stud size, standard package.	100
KP-1075YG	39CA59	Terminal kit without crimping tool. Includes the following: (20) PV18-8R; PV18-6F; PV14-8F; PV14-10R; (10) PV10-8R; PV10-10R; DNF14-250; DNF18-250; BSV18X; BSV14X; BSV10X; (10) JN418-212.	1
KP-1165YG	39CA62	Includes the following: (18) PV18-8R; PV14-10R; PV18-6F; PV14-8F; (10) PV10-8R; PV10-10R; BSV18X; BSV14X; BSV10X; DV18-250B; DV14-188B; (5) JN418-212; (1) CT-160 tool; KP-1000 box.	1



<b>Termination Tools</b>			
CT-100AG	38YU60	Crimps most Panduit #22 – 10 AWG insulated and non-insulated terminals, disconnects, and splices. Crimps 4mm <sup>2</sup> – 6mm <sup>2</sup> copper metric lugs. Cuts #4, #6, #8 and #10 screw sizes. Cuts and strips #22 – 10 AWG wire.	1
CT-1525G	38YU62	26 – 14 AWG Contour Crimp™ Controlled Cycle Crimping Tool.	1
CT-1550G	38YU61	Crimps most Panduit #22 – 10 AWG nylon and vinyl insulated terminals, splices, and disconnects. The CT-1550 has the Red/Blue pocket closest to the pivot which provides a reduced crimp effort for those who make Red/Blue terminations.	1
CT-1570G	38YU63	Crimps most Panduit #22 – 10 AWG and 0.5 – 6.0mm <sup>2</sup> non-insulated terminals and disconnects. Crimps Panduit #22 – 10 AWG and 0.5 – 6.0mm <sup>2</sup> non-insulated splices, #14 – #10 AWG copper code conductor lugs, and 4mm <sup>2</sup> – 6mm <sup>2</sup> copper metric lugs.	1
CT-1000	38YU68	Controlled cycle crimp tool with trapezoid profile for #20 – 14 AWG (0.50 – 2.5mm <sup>2</sup> ) insulated continuously molded ferrules on strips. Also cuts and strips wire.	1
CT-1002G	38YU65	Controlled cycle crimp tool with trapezoid profile for Panduit #26 – 10 AWG (0.14 – 6.0mm <sup>2</sup> ) insulated and non-insulated single wire ferrules.	1
CT-1003G	38YU66	Controlled cycle crimp tool with trapezoid profile for Panduit #22 – #8 AWG (0.14 – 6.0mm <sup>2</sup> ) insulated and non-insulated single wire ferrules.	1
CT-1014G	1LEL3	Crimps Panduit #22 – 14 AWG loose piece Disco-Lok™ Disconnects.	1
CT-1015G	1LEL4	Crimps Panduit #22 – 14 AWG loose piece Supra-Grip™ Disconnects.	1



## Wire Accessories

**Keeping you secure:** secure quickly and easily with a broad selection of styles for installation and flexibility.



Panduit Part Number	Grainger Part Number	Description	Std. Pkg. Qty.
<b>Cable Tie Mounts – Adhesive Backed</b>			
SGABM20-AG-C	1LEV3	Adhesive mount with rubber adhesive, 0.75" x 0.75" (19.1mm x 19.1mm), White (SG series).	100
SGABM25-AG-C	1LEU9	Adhesive mount with rubber adhesive, 1" x 1" (25.4mm x 25.4mm), White (SG series).	100
SGABM25-ATG-C0	1LEV4	Adhesive mount with acrylic adhesive tape 1" x 1" (25.4mm x 25.4mm), weather resistant, Black (SG series).	100
SGABM40-AG-L	1LEV1	Adhesive mount with rubber adhesive, 1.5" x 1.5" (38.1mm x 38.1mm), White (SG series).	50
SGABM50-AG-L	1LEV1	Adhesive mount with rubber adhesive, 2" x 2" (50.8mm x 50.8mm), White (SG series).	50
<b>Cord Clip – Adhesive Backed</b>			
ACC38-AG-C	1LEV7	1" x 1" Natural nylon 6.6 adhesive cord clip wire and cable mount.	100
<b>Fixed Diameter Clamps</b>			
CCS50-S8-C	1LEV9	Fixed diameter cable clamp, heavy duty, #10 screw (M5), 0.38" (9.7mm) bundle, White, standard package.	100
CCS25-S8G-C	1LEV8	Fixed diameter cable clamp, #8 screw (M4), 0.25" (6.4mm) bundle, White, standard package.	100
CCS50-S8G-C	1LEW1	Fixed diameter cable clamp, #8 screw (M4), 0.50" (12.7mm) bundle, White, standard package.	100

## Wiring Duct

**Maximizing space:** maximize the utilization of an enclosed space with Panduit wiring duct.



Panduit Part Number	Grainger Part Number	Description	Std. Pkg. Qty.
<b>Type F Narrow Slot Wiring Duct</b>			
F1.5X1.5LG6-AG	3EYC3	Type F narrow slot wiring duct, 1.5" W x 1.5" H, 6' length, PVC, adhesive, Light Gray.	6 ft.
F1.5X1.5LG6G	3EXX1	Type F narrow slot wiring duct, 1.5" W x 1.5" H, 6' length, PVC, Light Gray.	6 ft.
F1.5X1.5WH6G	3EXX2	Type F narrow slot wiring duct, 1.5" W x 1.5" H, 6' length, PVC, White.	6 ft.
F1.5X2LG6-AG	3EYC4	Type F narrow slot wiring duct, 1.5" W x 2" H, 6' length, PVC, adhesive, Light Gray.	6 ft.
F1.5X2LG6G	3EXX3	Type F narrow slot wiring duct, 1.5" W x 2" H, 6' length, PVC, Light Gray.	6 ft.
F1.5X2WH6G	3EXX4	Type F narrow slot wiring duct, 1.5" W x 2" H, 6' length, PVC, White.	6 ft.
F1.5X3LG6-AG	3EYC5	Type F narrow slot wiring duct, 1.5" W x 3" H, 6' length, PVC, adhesive, Light Gray.	6 ft.
F1.5X3LG6G	3EXX5	Type F narrow slot wiring duct, 1.5" W x 3" H, 6' length, PVC, Light Gray.	6 ft.
F1.5X3WH6G	3EXX6	Type F narrow slot wiring duct, 1.5" W x 3" H, 6' length, PVC, White.	6 ft.
F1X1.5WH6G	3EXY1	Type F narrow slot wiring duct, 1" W x 1.5" H, 6' length, PVC, White.	6 ft.
F1X1LG6-AG	3EYC8	Type F narrow slot wiring duct, 1" W x 1" H, 6' length, PVC, adhesive, Light Gray.	6 ft.
F1X1LG6G	3EXY2	Type F narrow slot wiring duct, 1" W x 1" H, 6' length, PVC, Light Gray.	6 ft.
F1X1WH6G	3EXY3	Type F narrow slot wiring duct, 1" W x 1" H, 6' length, PVC, White.	6 ft.
F1X2LG6-AG	3EYC9	Type F narrow slot wiring duct, 1" W x 2" H, 6' length, PVC, adhesive, Light Gray.	6 ft.
F1X2LG6G	3EXY4	Type F narrow slot wiring duct, 1" W x 2" H, 6' length, PVC, Light Gray.	6 ft.
F1X2WH6G	3EXY5	Type F narrow slot wiring duct, 1" W x 2" H, 6' length, PVC, White.	6 ft.
F1X3LG6-AG	3EYD1	Type F narrow slot wiring duct, 1" W x 3" H, 6' length, PVC, adhesive, Light Gray.	6 ft.
F1X3LG6G	3EXY6	Type F narrow slot wiring duct, 1" W x 3" H, 6' length, PVC, Light Gray.	6 ft.
F1X3WH6G	3EXY7	Type F narrow slot wiring duct, 1" W x 3" H, 6' length, PVC, White.	6 ft.
F2X2LG6-AG	3EYD3	Type F narrow slot wiring duct, 2" W x 2" H, 6' length, PVC, adhesive, Light Gray.	6 ft.
F2X2LG6G	3EXZ1	Type F narrow slot wiring duct, 2" W x 2" H, 6' length, PVC, Light Gray.	6 ft.
F2X2WH6G	3EXZ2	Type F narrow slot wiring duct, 2" W x 2" H, 6' length, PVC, White.	6 ft.
F2X3LG6-AG	3EYD4	Type F narrow slot wiring duct, 2" W x 3" H, 6' length, PVC, adhesive, Light Gray.	6 ft.
F2X3LG6G	3EXZ3	Type F narrow slot wiring duct, 2" W x 3" H, 6' length, PVC, Light Gray.	6 ft.
F2X3WH6G	3EXZ4	Type F narrow slot wiring duct, 2" W x 3" H, 6' length, PVC, White.	6 ft.
F3X3LG6-AG	3EYD6	Type F narrow slot wiring duct, 3" W x 3" H, 6' length, PVC, adhesive, Light Gray.	6 ft.
F3X3LG6G	3EXZ9	Type F narrow slot wiring duct, 3" W x 3" H, 6' length, PVC, Light Gray.	6 ft.
F3X3WH6G	3EYA1	Type F narrow slot wiring duct, 3" W x 3" H, 6' length, PVC, White.	6 ft.
<b>Duct Cover with Protective Film</b>			
C1.5LG6-FG	3EYE1	Duct cover with protective film, 1.5" W x 6' length, PVC, Light Gray.	6 ft.
C1.5WH6-FG	3EYE2	Duct cover with protective film, 1.5" W x 6' length, PVC, White.	6 ft.
C1LG6-FG	3EYE3	Duct cover with protective film, 1" W x 6' length, PVC, Light Gray.	6 ft.
C1WH6-FG	3EYE4	Duct cover with protective film, 1" W x 6' length, PVC, White.	6 ft.
C2LG6-FG	3EYE5	Duct cover with protective film, 2" W x 6' length, PVC, Light Gray.	6 ft.
C2WH6-FG	3EYE6	Duct cover with protective film, 2" W x 6' length, PVC, White.	6 ft.
C3LG6-FG	3EYE7	Duct cover with protective film, 3" W x 6' length, PVC, Light Gray.	6 ft.
C3WH6-FG	3EYE8	Duct cover with protective film, 3" W x 6' length, PVC, White.	6 ft.



(continued on page 11)

## Wiring Duct (continued)



Panduit Part Number	Grainger Part Number	Description	Std. Pkg. Qty.
<b>Type G Wide Slot Wiring Duct</b>			
G1.5X1.5LG6-AG	3EXV3	Type G wide slot wiring duct, 1.5" W x 1.5" H, 6' length, PVC, adhesive, Light Gray.	6 ft.
G1.5X1.5LG6G	3FVH2	Type G wide slot wiring duct, 1.5" W x 1.5" H, 6' length, PVC, Light Gray.	6 ft.
G1.5X1.5WH6G	3FVH4	Type G wide slot wiring duct, 1.5" W x 1.5" H, 6' length, PVC, White.	6 ft.
G1.5X2LG6-AG	3EXV4	Type G wide slot wiring duct, 1.5" W x 2" H, 6' length, PVC, adhesive, Light Gray.	6 ft.
G1.5X2LG6G	3FVH6	Type G wide slot wiring duct, 1.5" W x 2" H, 6' length, PVC, Light Gray.	6 ft.
G1.5X2WH6G	3FVH8	Type G wide slot wiring duct, 1.5" W x 2" H, 6' length, PVC, White.	6 ft.
G1.5X3LG6-AG	3EXV5	Type G wide slot wiring duct, 1.5" W x 3" H, 6' length, PVC, adhesive, Light Gray.	6 ft.
G1.5X3LG6G	3FVJ1	Type G wide slot wiring duct, 1.5" W x 3" H, 6' length, PVC, Light Gray.	6 ft.
G1.5X3WH6G	3FVJ2	Type G wide slot wiring duct, 1.5" W x 3" H, 6' length, PVC, White.	6 ft.
G1X1LG6G	3FVK2	Type G wide slot wiring duct, 1" W x 1" H, 6' length, PVC, Light Gray.	6 ft.
G1X1WH6G	3FVK4	Type G wide slot wiring duct, 1" W x 1" H, 6' length, PVC, Light Gray.	6 ft.
G1X2LG6-AG	3EXV9	Type G wide slot wiring duct, 1" W x 2" H, 6' length, PVC, adhesive, Light Gray.	6 ft.
G1X2LG6G	3FVK5	Type G wide slot wiring duct, 1" W x 2" H, 6' length, PVC, Light Gray.	6 ft.
G1X2WH6G	3FVK7	Type G wide slot wiring duct, 1" W x 2" H, 6' length, PVC, White.	6 ft.
G1X3LG6-AG	3EXW1	Type G wide slot wiring duct, 1" W x 3" H, 6' length, PVC, adhesive, Light Gray.	6 ft.
G1X3LG6G	3FVK9	Type G wide slot wiring duct, 1" W x 3" H, 6' length, PVC, Light Gray.	6 ft.
G1X3WH6G	3FVL2	Type G wide slot wiring duct, 1" W x 3" H, 6' length, PVC, White.	6 ft.
G2X2LG6-AG	3EXW3	Type G wide slot wiring duct, 2" W x 2" H, 6' length, PVC, adhesive, Light Gray.	6 ft.
G2X2LG6G	3FVL8	Type G wide slot wiring duct, 2" W x 2" H, 6' length, PVC, adhesive, Light Gray.	6 ft.
G2X2WH6G	3AFY1	Type G wide slot wiring duct, 2" W x 2" H, 6' length, PVC, White.	6 ft.
G2X3LG6-AG	3EXW4	Type G wide slot wiring duct, 2" W x 3" H, 6' length, PVC, adhesive, Light Gray.	6 ft.
G2X3LG6G	3AFY3	Type G wide slot wiring duct, 2" W x 3" H, 6' length, PVC, Light Gray.	6 ft.
G2X3WH6G	3AFY5	Type G wide slot wiring duct, 2" W x 3" H, 6' length, PVC, White.	6 ft.
G3X3LG6-AG	3EXW6	Type G wide slot wiring duct, 3" W x 3" H, 6' length, PVC, adhesive, Light Gray.	6 ft.
G3X3LG6G	3EXT9	Type G wide slot wiring duct, 3" W x 3" H, 6' length, PVC, Light Gray.	6 ft.
G3X3WH6G	3EXU1	Type G wide slot wiring duct, 3" W x 3" H, 6' length, PVC, White.	6 ft.
<b>Tools</b>			
DNT-100G	2ETX1	Hand-held sidewall notching tool.	1
DCTG	2ETW9	Hand-held duct cutting tool.	1
DFCTG	2ETW8	Hand-held duct finger cutting tool.	1





AVAILABLE THROUGH

**GRAINGER**<sup>®</sup>

||||| FOR THE ONES WHO GET IT DONE

**PANDUIT**<sup>®</sup>

Panduit Corp.  
World Headquarters  
Tinley Park, IL 60487

800.777.3300

[www.panduit.com](http://www.panduit.com)

< [Previous Page](#) | [Table of Contents](#)