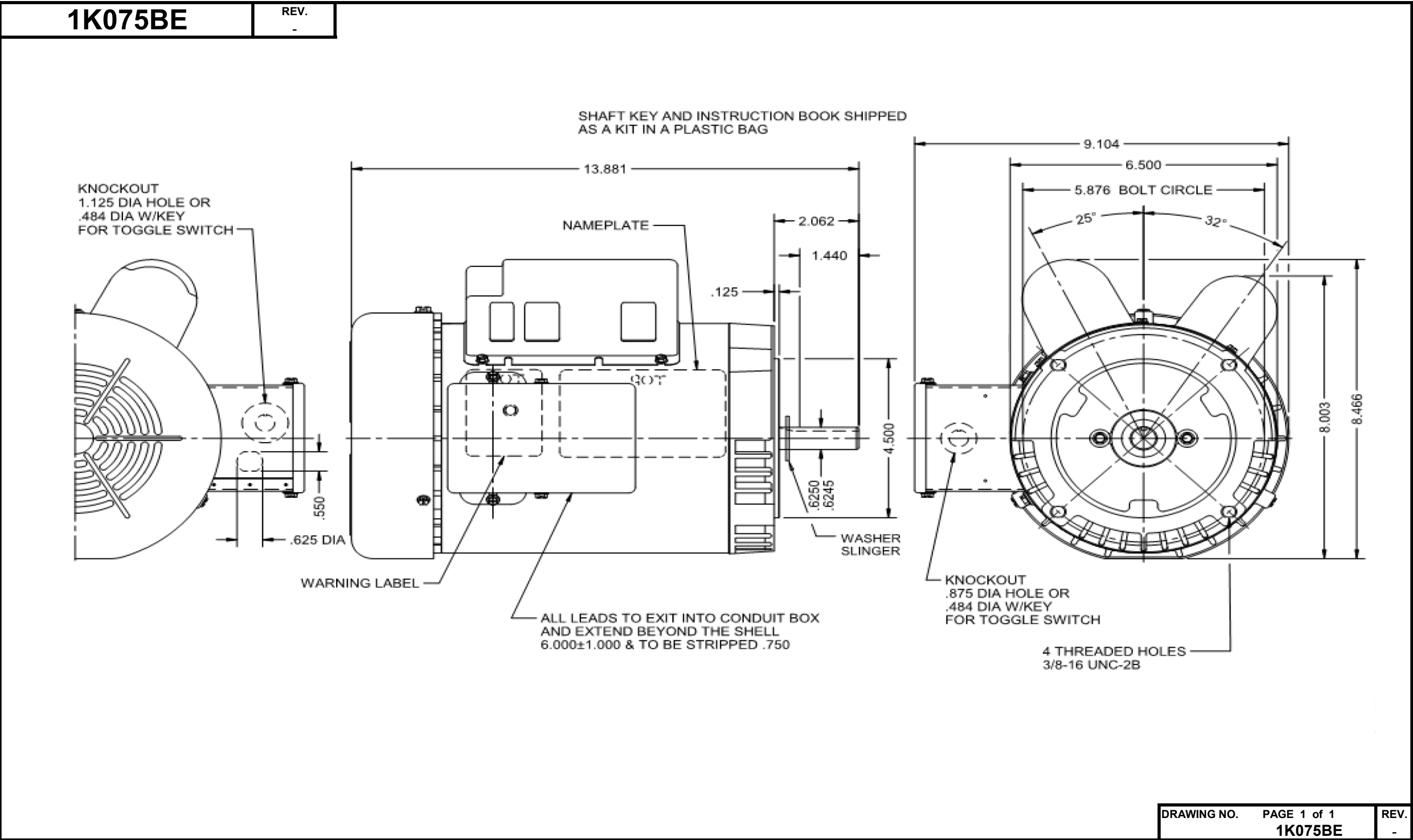


Dimensional Drawing



Dayton Electric Mfg. Co. Lake Forest, IL 60045 USA

Performance Data



1K075BE

REV.
-

MOTOR PERFORMANCE

HP:	2HP							
Poles:	4							
No. of Speeds:	1							
Volts:	115 / 208-230	115	208	230				
HZ:		60	60	60				
Service Factor:	1							
Efficiency:	@ Rated Load							
Power Factor:	@ Rated Load							
Amps:	@ No Load							
	@ Rated Load	18.9	10.3	9.4				
	@ Service Factor	N/A	N/A	N/A				
	@ Locked Rotor			59.4				
RPM:	@ Rated Load							
Ambient (°C):								
Altitude (FASL):								
Torques:	Breakdown			213.7				
	Locked Rotor			270.3				
	Pull-Up			269				
	Rated Load							
	Service Factor							
Watts:	Rated Load							
KVA Code:								
Temperature Rise:	@ Rated Load			84.0°C				
	@ Service Factor			84.0°C				
Thermal Protector:	Trip Temp (°C)							
Winding Material:	Start (Auxiliary)	Cooper						
	Run (Main)	Cooper						
Capacitor(s):	Start (MFD / Volts)	896 MFD / 110 VAC						
	No. of Start Capacitors							
	Run (MFD / Volts)	60 MFD/ 240 VAC						
	No. of Run Capacitors							

LOW SPEED PERFORMANCE DATA:

HP:								
Poles:								
Volts:								
HZ:								
Efficiency:	@ Rated Load							
Power Factor:	@ Rated Load							
Amps:	@ No Load							
	@ Rated Load							
	@ Service Factor							
	@ Locked Rotor							
Torques:	@ Rated Load							
	Locked Rotor							
	Pull-Up							
	Rated Load							
	Service Factor							
Watts:	@ Rated Load							
Temperature Rise:	@ Rated Load							
	@ Service Factor							

DRAWING NO. PAGE 1 REV.
1K075BE -

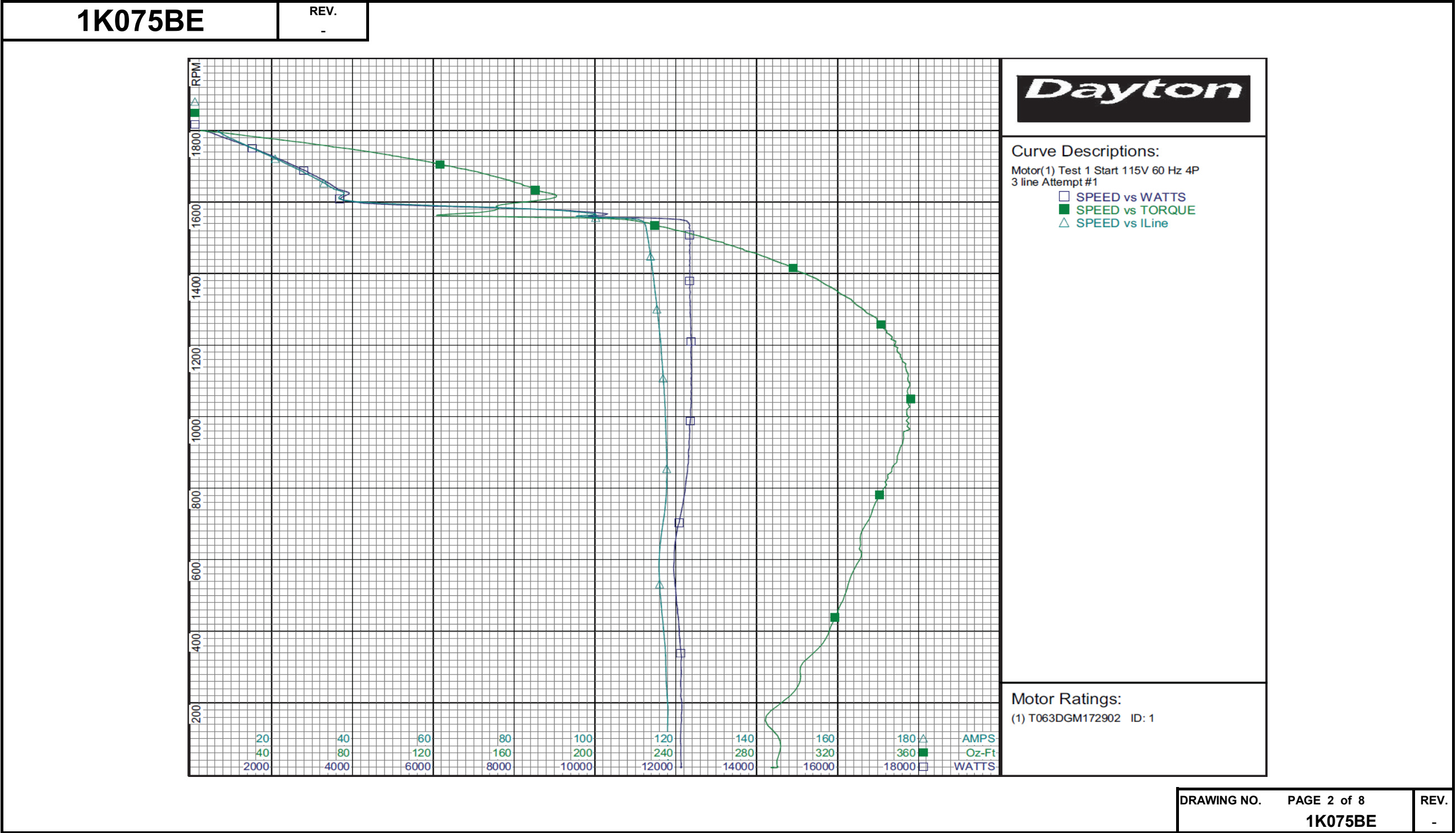
Performance Data



1K075BE		REV. -													
Dayton Manufacturing Company															
Motor Description				Test Conditions											
Model:		T063DGM172902		Test Type:		Start		Run Cap:		0					
Motor ID:		1		Test Number:		1		Start Cap:		0µfd					
Poles:		4		Poles:		4									
Volts:		115/208-230		Volts:		115		Tested:		9/25/2006 10:34:16 AM					
Frequency:		60		Hz:		60		Tested By:		Sharp, Gerald					
HP:		2		Rotation:				Gear Ratio:		1:1					
Speed:		1725		Special Cond:				Bearing Friction:		-2.08 Oz-Ft					
Phase:		1		Speed Conn:		3 line		Windage Torque:		-6.08 Oz-Ft					
Protector:		NONE		TestBoard:		Amps Performance		Fixture #2							
Special Points		Vline(V)	Vaux(V)	Vcap(V)	Iline(A)	Imain(A)	Iaux(A)	Watts	RPM	Tq(Oz-ft)	HP	Eff (%)	PF (%)	Cap	
		115.0	125.7	128.9	118.18	96.21	46.28	12127	20	288.3	0.068	0.4	89.2	952.4	
		115.0	125.7	128.0	118.02	95.90	46.03	12120	49	290.6	0.170	1.0	89.3	954.1	
PUT	OZ-FT	115.0	126.6	125.9	117.97	95.23	45.25	12137	150	284.2	0.508	3.1	89.5	953.1	
		115.0	127.0	125.0	117.99	94.91	44.93	12147	191	290.2	0.661	4.1	89.5	953.3	
		115.0	128.5	122.1	117.46	93.40	43.84	12138	326	305.6	1.187	7.3	89.9	952.6	
		115.0	129.4	118.5	116.52	91.75	42.50	12038	451	319.7	1.715	10.6	89.8	951.6	
		115.0	131.2	114.6	115.82	90.45	40.97	11947	566	327.5	2.205	13.8	89.7	948.4	
		115.0	134.7	111.4	116.40	89.76	39.78	12011	671	331.5	2.649	16.5	89.7	947.3	
		115.0	139.6	110.0	117.51	88.78	39.27	12192	772	340.1	3.124	19.1	90.2	946.9	
		115.0	144.0	108.7	117.75	87.22	38.83	12291	863	347.5	3.570	21.7	90.8	947.5	
		115.0	148.5	107.4	117.52	85.53	38.31	12334	949	352.6	3.982	24.1	91.3	946.4	
		115.0	152.9	106.5	117.29	83.94	38.00	12372	1027	355.7	4.351	26.2	91.7	946.3	
		115.0	157.5	105.7	116.88	82.33	37.72	12379	1100	354.8	4.647	28.0	92.1	946.4	
		115.0	162.3	105.4	116.46	80.85	37.59	12372	1167	351.0	4.877	29.4	92.4	946.0	
		115.0	167.3	105.6	116.03	79.46	37.67	12368	1228	345.9	5.058	30.5	92.7	946.0	
		115.0	172.4	106.3	115.51	78.08	37.96	12357	1285	336.1	5.142	31.0	93.0	947.3	
		115.0	177.5	107.6	114.96	76.75	38.49	12339	1337	323.6	5.150	31.1	93.3	948.3	
		115.0	183.2	109.8	114.48	75.48	39.30	12336	1385	309.6	5.104	30.9	93.7	949.7	
		115.0	188.9	112.5	113.96	74.25	40.36	12346	1428	292.6	4.973	30.0	94.2	951.5	
		115.0	194.6	115.8	113.49	73.08	41.65	12343	1468	273.0	4.772	28.8	94.6	954.4	
		115.0	200.4	119.7	112.96	71.87	43.15	12345	1505	251.6	4.506	27.2	95.0	956.4	
		115.0	205.7	123.5	112.32	70.72	44.66	12325	1538	227.8	4.171	25.2	95.4	959.4	
		115.0	176.8	117.6	95.62	66.68	37.98	9841	1561	129.6	2.408	18.3	89.5	857.0	
		115.0	106.7	135.0	47.09	45.82	7.28	4281	1596	159.1	3.023	52.7	79.1	143.1	
		115.0	119.7	148.1	36.70	35.32	3.66	3761	1632	171.7	3.336	66.2	89.1	65.5	
		115.0	124.8	154.2	32.54	31.11	3.55	3363	1655	159.9	3.152	69.9	89.9	61.0	
		115.0	129.5	159.8	28.75	27.24	3.62	2984	1678	145.7	2.911	72.8	90.3	60.0	
		115.0	134.5	165.8	24.95	23.44	3.75	2594	1699	128.8	2.605	74.9	90.4	60.1	
		115.0	139.0	171.6	21.23	19.71	3.86	2200	1719	110.7	2.265	76.8	90.1	59.6	
		115.0	143.6	178.0	17.59	16.19	3.97	1803	1738	90.7	1.877	77.7	89.1	59.2	
		115.0	147.8	184.4	14.04	13.03	4.10	1386	1756	67.9	1.419	76.4	85.8	59.0	
		115.0	152.0	191.1	10.37	10.16	4.23	937	1775	42.1	0.889	70.7	78.6	58.7	
		115.0	155.3	197.8	7.37	8.58	4.41	524	1793	16.8	0.359	51.2	61.8	59.1	
		115.0	157.0	201.2	6.69	8.83	4.50	337	1800	4.8	0.104	22.9	43.8	59.4	
DRAWING NO.												PAGE 1 of 8		REV.	
1K075BE															

Dayton Electric Mfg. Co. Lake Forest, IL 60045 USA

Performance Data



Dayton Electric Mfg. Co. Lake Forest, IL 60045 USA

Performance Data



1K075BE

REV.

-

Dayton Manufacturing Company

Motor Description

Model: T063DGM172902
Motor ID: 1
Poles: 4
Volts: 115/208-230
Frequency: 60
HP: 2
Speed: 1725
Phase: 1
Protector: NONE

Test Conditions

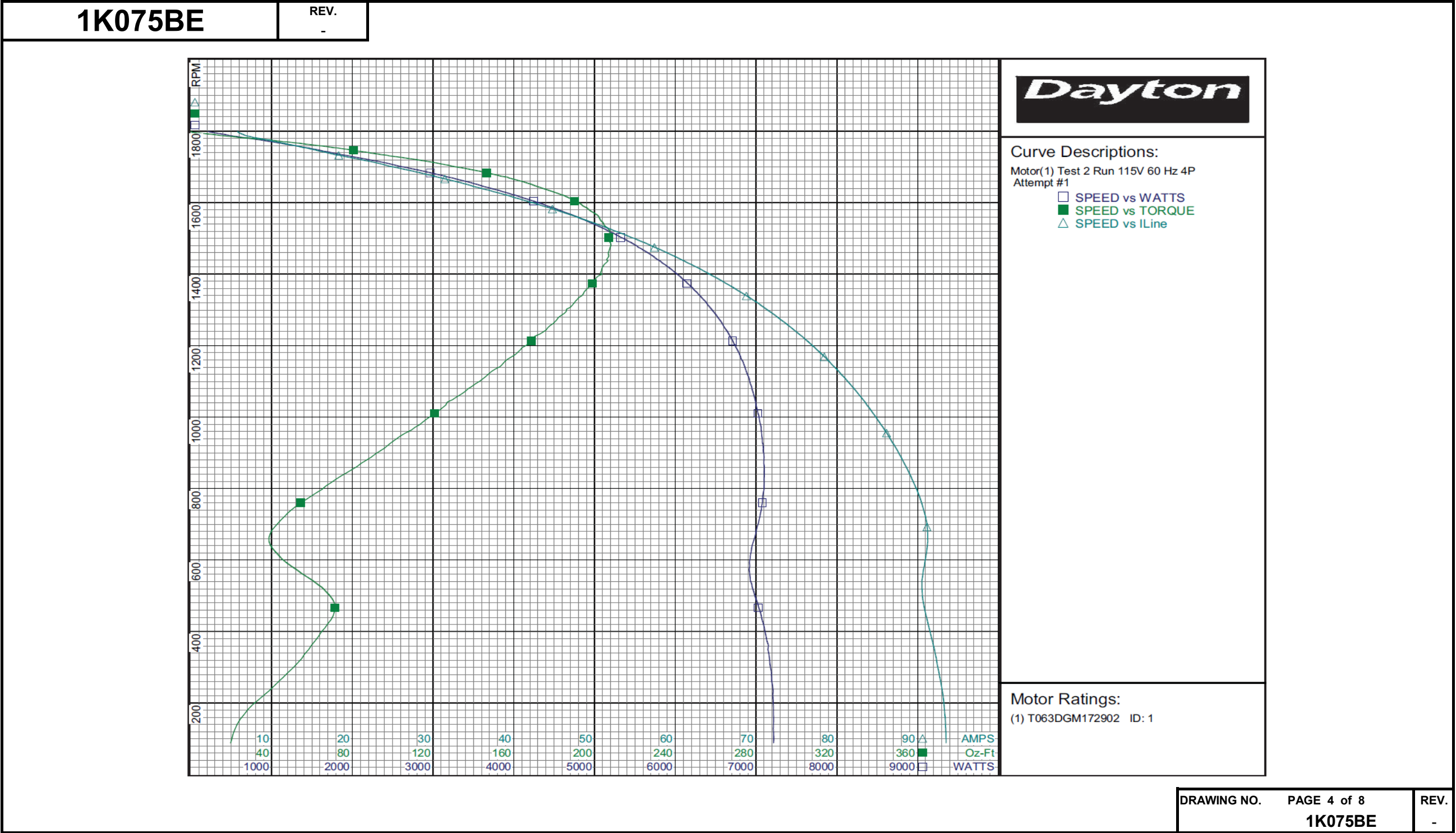
Test Type: Run
Test Number: 2
Poles: 4
Volts: 115
Hz: 60
Rotation:
Special Cond:
Speed Conn:
TestBoard: Amtps Performance Fixture #2
Run Cap: 0
Start Cap: 0µfd
Tested: 9/25/2006 10:31:06 AM
Tested By: Sharp, Gerald
Gear Ratio: 1:1
Bearing Friction: -2.08 Oz-Ft
Windage Torque: -6.08 Oz-Ft

Special Points	Vline (V)	Vaux (V)	Vcap (V)	Iline (A)	Imain (A)	Iaux (A)	Watts	RPM	Tq (Oz-ft)	HP	Eff (%)	PF (%)	Cap
	115.0	158.3	203.0	5.78	8.52	4.614	213	1799	0.0	0.000	0.0	32.1	60.3
	115.0	153.3	194.5	8.09	8.58	4.358	682	1781	27.8	0.589	64.4	73.3	59.4
36 OZ-FT	115.0	152.6	192.3	9.13	9.15	4.301	819	1776	36.0	0.761	69.3	78.0	59.3
48.7 OZ-FT	115.0	151.3	189.4	10.79	10.24	4.240	1030	1769	48.7	1.026	74.3	83.0	59.4
56.2 OZ-FT	115.0	150.4	187.6	11.84	11.02	4.205	1163	1764	56.2	1.180	75.7	85.4	59.4
	115.0	150.3	187.5	11.93	11.09	4.203	1174	1763	56.9	1.193	75.8	85.6	59.5
	115.0	145.8	180.5	15.93	14.57	4.071	1641	1744	82.9	1.721	78.2	89.6	59.8
97.39 OZ-FT	115.0	142.5	176.1	18.47	16.96	3.979	1925	1732	97.4	2.008	77.8	90.6	59.9
2 HP	115.0	142.6	176.2	18.34	16.84	3.982	1911	1732	97.0	2.000	78.1	90.6	59.9
1725 RPM	115.0	140.8	173.8	19.91	18.37	3.938	2079	1725	105.6	2.168	77.8	90.8	60.1
	115.0	140.5	173.3	20.22	18.67	3.930	2113	1723	107.2	2.199	77.6	90.9	60.1
112 OZ-FT	115.0	139.5	172.0	21.10	19.54	3.904	2206	1720	112.0	2.293	77.5	90.9	60.2
123.2 OZ-FT	115.0	136.7	168.4	23.39	21.81	3.835	2452	1709	123.2	2.506	76.3	91.1	60.4
	115.0	135.4	166.3	24.62	23.04	3.797	2584	1701	129.6	2.624	75.8	91.3	60.6
	115.0	129.6	159.1	29.26	27.74	3.650	3055	1678	150.3	3.003	73.3	90.8	60.9
	115.0	124.0	152.2	33.77	32.36	3.505	3502	1653	167.3	3.292	70.1	90.2	61.1
	115.0	117.9	145.4	38.36	37.08	3.371	3940	1625	181.8	3.517	66.6	89.3	61.5
	115.0	111.9	138.8	43.01	41.89	3.237	4365	1595	193.4	3.671	62.7	88.3	61.8
	115.0	105.7	132.6	47.47	46.52	3.105	4757	1562	201.8	3.754	58.9	87.1	62.1
	115.0	99.5	126.9	51.91	51.22	2.979	5124	1526	206.7	3.755	54.7	85.8	62.3
	115.0	93.4	121.7	56.21	55.70	2.859	5455	1488	207.7	3.679	50.3	84.4	62.3
BDT OZ-FT	115.0	92.7	121.2	56.63	56.14	2.848	5487	1483	208.0	3.673	49.9	84.3	62.4
	115.0	86.9	116.9	60.31	59.98	2.751	5749	1445	206.5	3.551	46.1	82.9	62.4
	115.0	81.1	113.1	64.26	64.13	2.664	6022	1399	203.5	3.390	42.0	81.5	62.5
	115.0	74.9	109.6	68.08	68.12	2.575	6263	1349	194.7	3.127	37.2	80.0	62.3
	115.0	69.2	107.1	71.63	71.85	2.513	6467	1296	186.0	2.869	33.1	78.5	62.3
	115.0	63.6	105.1	75.00	75.39	2.470	6647	1238	174.4	2.569	28.8	77.1	62.3
	115.0	58.1	103.7	78.16	78.71	2.430	6794	1175	160.6	2.246	24.7	75.6	62.1
	115.0	52.9	103.0	81.06	81.78	2.407	6914	1107	144.6	1.905	20.6	74.2	62.0
	115.0	47.6	102.5	83.71	84.59	2.390	6996	1033	126.3	1.553	16.6	72.7	61.9
	115.0	42.9	102.4	86.17	87.18	2.391	7067	955	106.3	1.209	12.8	71.3	61.9
	115.0	38.0	102.4	88.34	89.47	2.378	7094	870	84.2	0.872	9.2	69.8	61.6
	115.0	33.0	102.3	90.18	91.46	2.365	7082	780	59.9	0.556	5.9	68.3	61.3
	115.0	27.0	102.5	91.21	92.64	2.364	7001	683	40.0	0.326	3.5	66.7	61.2
	115.0	19.6	105.5	90.82	92.41	2.412	6919	583	49.6	0.344	3.7	66.3	60.6
	115.0	16.4	111.4	90.71	92.41	2.566	7018	479	71.1	0.405	4.3	67.3	61.1
	115.0	15.7	114.5	91.94	93.68	2.624	7151	361	59.7	0.257	2.7	67.6	60.8
	115.0	13.5	116.4	93.05	94.87	2.636	7210	233	38.6	0.107	1.1	67.4	60.1
	115.0	11.3	119.5	93.51	95.44	2.707	7218	100	20.3	0.024	0.2	67.1	60.1
PUT OZ-FT	115.0	154.6	196.9	7.21	8.25	4.433	554	1785	19.6	0.418	56.1	66.7	59.7

DRAWING NO. PAGE 3 of 8 REV.
1K075BE -

Dayton Electric Mfg. Co. Lake Forest, IL 60045 USA

Performance Data



Performance Data



1K075BE

REV.

-

Dayton Manufacturing Company

Motor Description

Model: T063DGM172902
Motor ID: 1
Poles: 4
Volts: 115/208-230
Frequency: 60
HP: 2
Speed: 1725
Phase: 1
Protector: NONE

Test Conditions

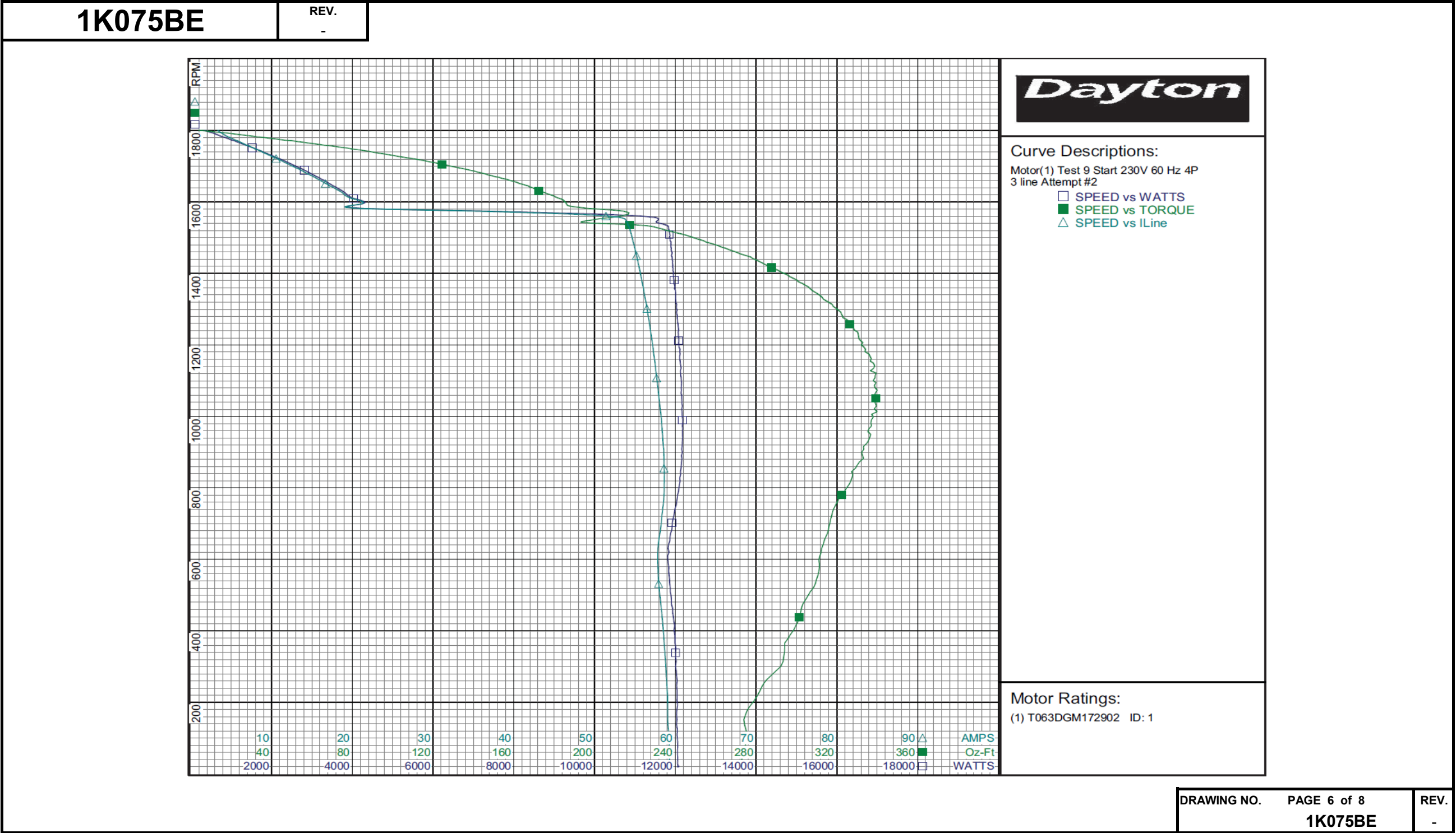
Test Type: Start
Test Number: 9
Poles: 4
Volts: 230
Hz: 60
Rotation:
Special Cond:
Speed Conn: 3 line
TestBoard: Amtps Performance Fixture #2
Run Cap: 0
Start Cap: 0μfd
Tested: 9/25/2006 2:36:19 PM
Tested By: Sharp, Gerald
Gear Ratio: 1:1
Bearing Friction: -3.52 Oz-Ft
Windage Torque: -6.56 Oz-Ft

Special Points	Vline(V)	Vaux(V)	Vcap(V)	Iline(A)	Imain(A)	Iaux(A)	Watts	RPM	Tq(Oz-ft)	HP	Eff(%)	PF(%)	Cap
PUT OZ-FT	230.0	205.5	122.8	59.35	46.22	43.75	12080	21	270.3	0.067	0.4	88.5	944.7
	230.0	205.4	122.7	59.33	46.24	43.72	12065	19	269.0	0.062	0.4	88.4	945.5
	230.0	206.0	122.2	59.24	45.90	43.51	12052	50	273.0	0.162	1.0	88.4	944.7
	230.0	209.1	119.2	59.05	44.38	42.41	12050	192	277.3	0.634	3.9	88.7	944.1
	230.0	212.3	116.1	58.72	42.68	41.27	12000	326	293.6	1.141	7.1	88.9	942.7
	230.0	215.3	113.1	58.30	41.08	40.15	11930	450	301.9	1.619	10.1	89.0	942.0
	230.0	219.0	109.0	57.83	39.55	38.64	11833	566	311.0	2.095	13.2	89.0	939.9
	230.0	224.1	105.8	58.07	37.94	37.41	11879	672	315.3	2.524	15.9	88.9	937.8
	230.0	230.2	104.4	58.55	35.84	36.88	12045	771	321.0	2.946	18.2	89.4	937.0
	230.0	235.9	103.0	58.58	33.54	36.42	12144	863	330.1	3.393	20.8	90.1	938.3
	230.0	241.2	101.6	58.40	31.33	35.93	12174	949	336.7	3.805	23.3	90.6	938.1
	230.0	246.7	100.2	58.07	29.21	35.44	12172	1029	339.5	4.157	25.5	91.1	938.6
	230.0	252.1	99.1	57.71	27.22	35.05	12144	1100	338.0	4.426	27.2	91.5	938.1
	230.0	257.5	98.5	57.35	25.34	34.82	12104	1168	336.4	4.676	28.8	91.8	937.1
	230.0	263.3	98.6	56.97	23.67	34.82	12071	1230	330.5	4.840	29.9	92.1	937.0
	230.0	269.1	99.1	56.57	22.15	35.01	12034	1286	322.2	4.934	30.6	92.5	936.8
	230.0	275.1	100.1	56.17	20.89	35.45	12003	1338	311.6	4.963	30.8	92.9	939.1
	230.0	280.6	102.1	55.79	19.87	36.13	11953	1386	298.3	4.923	30.7	93.2	939.0
	230.0	286.6	104.5	55.37	19.11	37.07	11923	1430	282.8	4.812	30.1	93.6	941.3
	230.0	292.3	107.4	54.97	18.66	38.23	11898	1470	265.1	4.638	29.1	94.1	944.0
	230.0	298.1	110.9	54.55	18.51	39.58	11868	1506	245.7	4.405	27.7	94.6	946.7
	230.0	300.0	112.1	54.07	20.30	40.50	11659	1539	206.8	3.788	24.2	93.8	958.1
	230.0	231.3	140.9	35.53	22.99	20.26	7314	1574	214.4	4.017	41.0	89.5	381.5
	230.0	180.4	141.2	21.20	19.49	3.94	4281	1601	185.0	3.527	61.5	87.8	74.1
	230.0	180.8	148.1	18.51	17.32	3.49	3769	1629	173.6	3.367	66.6	88.5	62.6
	230.0	182.9	154.2	16.48	15.25	3.59	3384	1654	161.5	3.181	70.1	89.3	61.8
	230.0	184.8	160.3	14.55	13.28	3.73	2996	1678	146.0	2.916	72.6	89.5	61.7
	230.0	186.6	166.6	12.63	11.38	3.83	2605	1699	129.2	2.614	74.9	89.7	61.0
	230.0	188.1	172.9	10.75	9.62	3.99	2207	1720	111.1	2.274	76.9	89.2	61.2
	230.0	189.9	179.4	8.88	7.98	4.00	1804	1738	90.6	1.874	77.5	88.4	59.2
	230.0	190.9	185.3	7.11	6.69	4.11	1405	1757	69.0	1.443	76.6	85.9	58.9
	230.0	191.4	191.9	5.17	5.81	4.25	936	1777	41.5	0.878	70.0	78.7	58.7
	230.0	189.6	198.6	3.69	5.81	4.45	510	1794	15.7	0.336	49.1	60.1	59.5
	230.0	189.2	202.1	3.31	6.13	4.59	331	1800	3.9	0.084	19.0	43.4	60.3

DRAWING NO.	PAGE 5 of 8	REV.
1K075BE		-

Dayton Electric Mfg. Co. Lake Forest, IL 60045 USA

Performance Data



Performance Data



1K075BE

REV.

-

Dayton Manufacturing Company

Motor Description

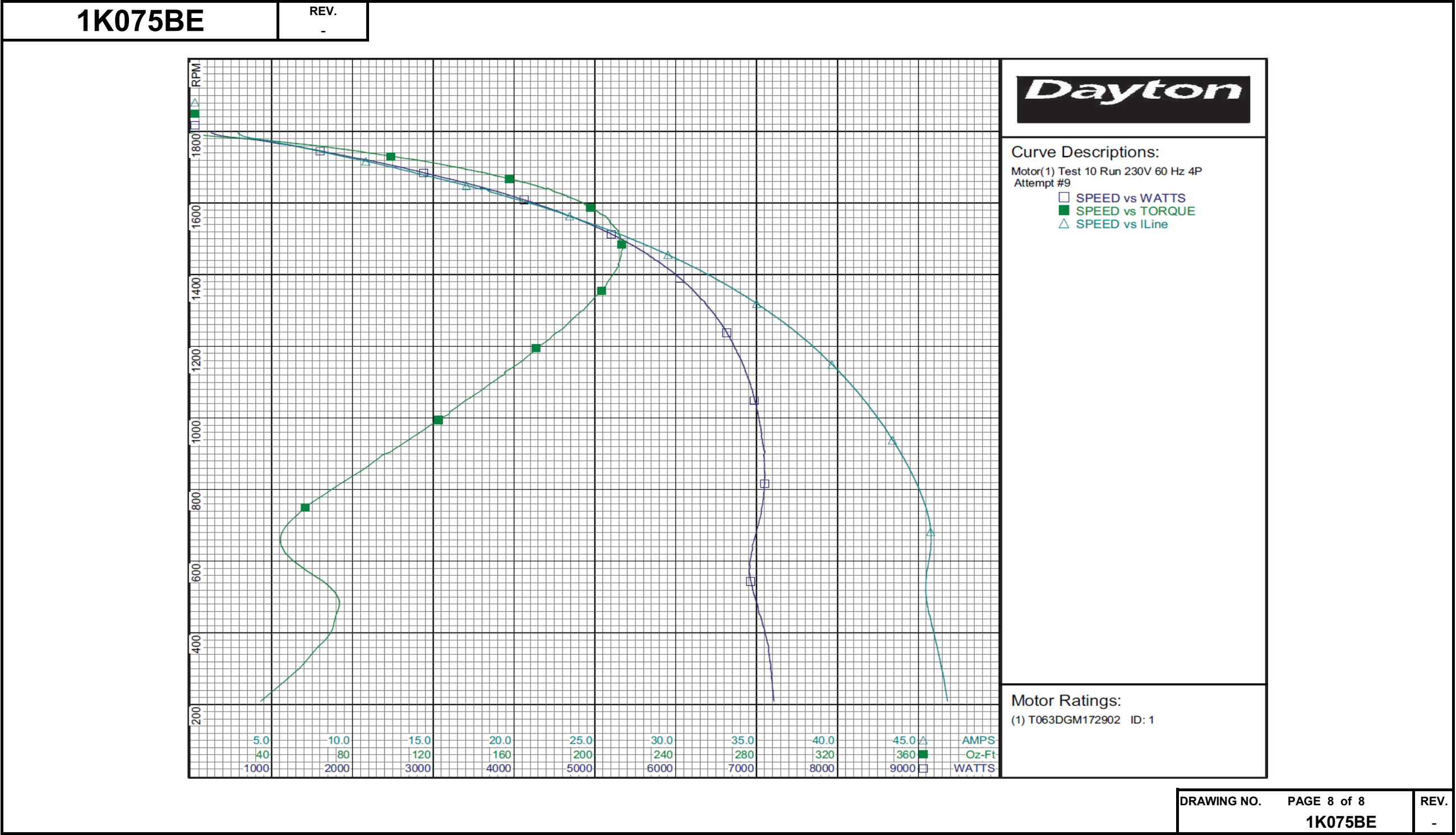
Model: T063DGM172902
Motor ID: 1
Poles: 4
Volts: 115/208-230
Frequency: 60
HP: 2
Speed: 1725
Phase: 1
Protector: NONE

Test Conditions

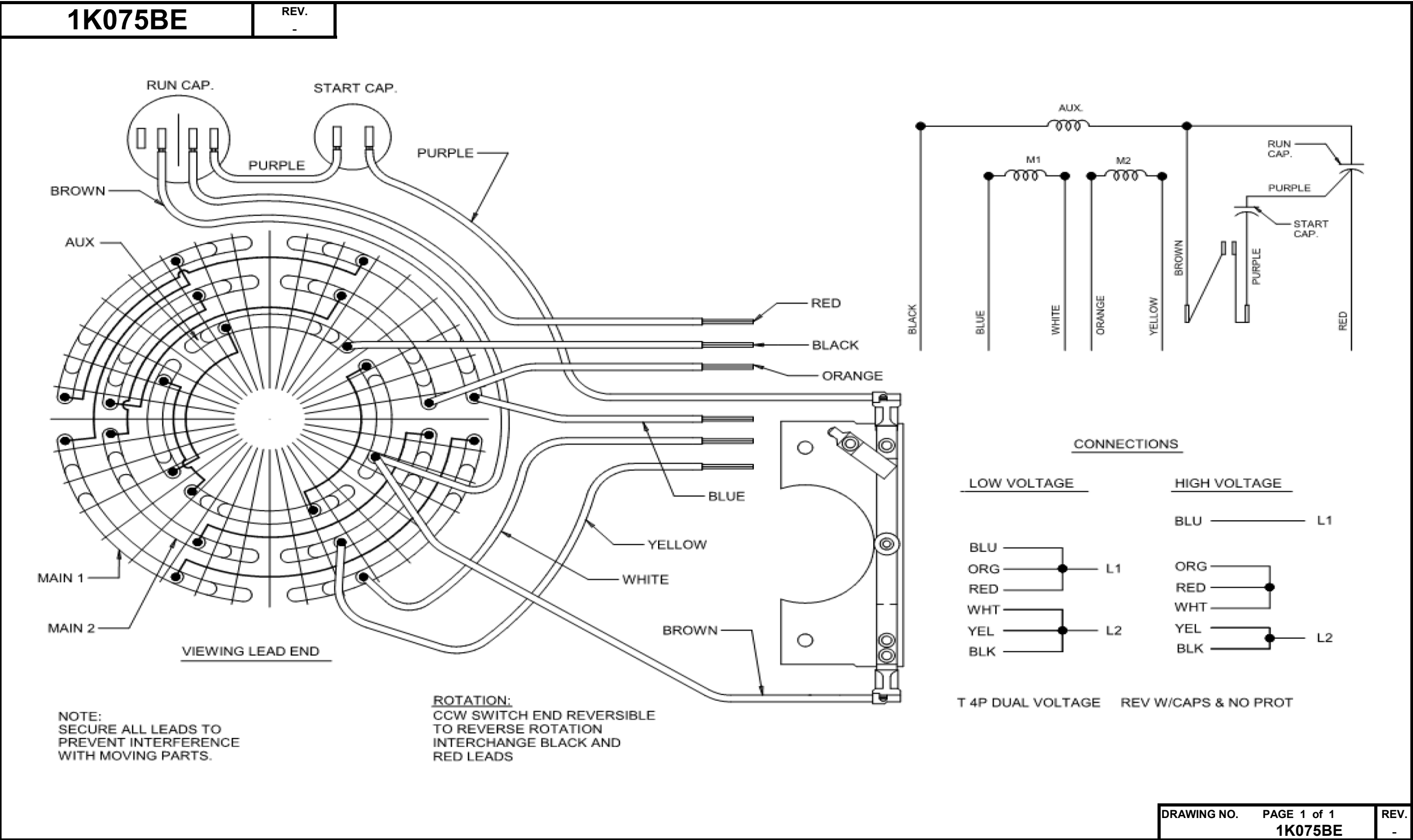
Test Type: Run
Test Number: 10
Poles: 4
Volts: 230
Hz: 60
Rotation:
Special Cond:
Speed Conn:
TestBoard: Amtps Performance Fixture #2
Run Cap: 0
Start Cap: 0µfd
Tested: 9/25/2006 1:53:56 PM
Tested By: Sharp, Gerald
Gear Ratio: 1:1
Bearing Friction: -3.36 Oz-Ft
Windage Torque: -6.40 Oz-Ft

Special Points	Vline (V)	Vaux (V)	Vcap (V)	Iline (A)	Imain (A)	Iaux (A)	Watts	RPM	Tq (Oz-ft)	HP	Eff (%)	PF (%)	Cap
	230.0	187.5	203.4	2.90	6.08	4.592	248	1796	0.0	0.000	0.0	37.1	59.9
	230.0	189.4	194.4	4.03	5.41	4.350	687	1779	28.2	0.597	64.9	74.2	59.3
36 OZ-FT	230.0	190.3	192.3	4.53	5.45	4.296	815	1775	36.0	0.761	69.6	78.2	59.3
48.7 OZ-FT	230.0	191.3	189.3	5.39	5.68	4.236	1024	1768	48.7	1.025	74.6	82.6	59.3
	230.0	191.3	187.8	5.85	5.85	4.199	1136	1764	55.1	1.158	76.0	84.4	59.3
56.2 OZ-FT	230.0	191.3	187.5	5.93	5.88	4.194	1156	1763	56.2	1.180	76.1	84.8	59.3
	230.0	191.1	181.5	7.65	6.91	4.072	1554	1747	79.0	1.642	78.8	88.3	59.5
97.39 OZ-FT	230.0	190.7	176.5	9.19	8.10	3.971	1902	1732	97.4	2.008	78.7	90.0	59.7
2 HP	230.0	190.7	176.6	9.16	8.07	3.973	1895	1732	97.0	2.000	78.7	90.0	59.7
	230.0	190.5	175.2	9.52	8.38	3.948	1975	1728	101.6	2.091	79.0	90.1	59.8
1725 RPM	230.0	190.4	174.1	9.87	8.68	3.925	2048	1725	105.0	2.157	78.6	90.2	59.8
112 OZ-FT	230.0	190.1	172.1	10.50	9.24	3.886	2184	1720	112.0	2.293	78.3	90.5	59.9
	230.0	189.2	169.0	11.46	10.15	3.822	2385	1710	121.8	2.479	77.5	90.5	60.0
123.2 OZ-FT	230.0	189.2	168.6	11.60	10.29	3.813	2416	1708	123.2	2.506	77.4	90.6	60.0
	230.0	188.0	163.0	13.40	12.03	3.702	2793	1689	140.4	2.824	75.4	90.7	60.3
	230.0	186.1	156.7	15.38	14.04	3.577	3192	1667	157.7	3.130	73.2	90.2	60.5
	230.0	184.1	150.4	17.52	16.26	3.443	3612	1643	173.7	3.398	70.2	89.6	60.7
	230.0	181.7	144.4	19.55	18.39	3.320	3994	1618	186.2	3.585	67.0	88.8	61.0
	230.0	179.2	138.6	21.61	20.58	3.199	4363	1590	196.9	3.729	63.7	87.8	61.2
	230.0	176.4	133.1	23.59	22.77	3.079	4725	1560	205.6	3.820	60.3	87.1	61.4
	230.0	173.5	127.9	25.63	24.89	2.964	5063	1528	210.5	3.828	56.4	85.9	61.5
	230.0	170.5	123.0	27.58	27.00	2.855	5373	1493	212.8	3.780	52.5	84.7	61.6
BDT OZ-FT	230.0	169.0	121.0	28.47	27.96	2.810	5505	1476	213.7	3.757	50.9	84.1	61.6
	230.0	167.2	118.6	29.52	29.11	2.758	5659	1455	212.9	3.689	48.6	83.3	61.7
	230.0	163.8	114.8	31.36	31.10	2.669	5908	1415	210.6	3.549	44.8	81.9	61.6
	230.0	160.5	111.6	33.14	33.04	2.593	6146	1371	205.6	3.356	40.7	80.6	61.7
	230.0	157.2	108.9	34.83	34.89	2.529	6354	1325	198.0	3.123	36.7	79.3	61.6
	230.0	153.6	106.8	36.44	36.66	2.476	6526	1274	188.5	2.858	32.7	77.9	61.5
	230.0	150.1	105.2	37.95	38.32	2.434	6673	1220	177.5	2.577	28.8	76.5	61.4
	230.0	147.0	104.2	39.37	39.89	2.405	6810	1161	164.5	2.274	24.9	75.2	61.3
	230.0	143.4	103.6	40.70	41.36	2.388	6914	1100	149.4	1.956	21.1	73.8	61.1
	230.0	140.2	103.6	41.93	42.72	2.378	6995	1034	132.5	1.630	17.4	72.5	60.9
	230.0	137.1	103.6	43.05	43.98	2.379	7054	963	114.4	1.312	13.9	71.2	60.9
	230.0	134.5	103.9	44.10	45.13	2.372	7093	888	93.1	0.984	10.3	69.9	60.6
	230.0	131.7	104.2	44.99	46.14	2.378	7090	807	71.6	0.688	7.2	68.5	60.6
	230.0	129.3	104.6	45.64	46.93	2.375	7043	722	51.3	0.441	4.7	67.1	60.2
	230.0	126.0	106.0	45.77	47.20	2.418	6949	633	45.6	0.344	3.7	66.0	60.5
	230.0	120.3	110.6	45.47	47.04	2.535	6927	544	65.3	0.423	4.6	66.2	60.8
	230.0	115.3	115.6	45.72	47.35	2.663	7049	445	71.5	0.379	4.0	67.0	61.1
	230.0	112.4	118.4	46.28	47.95	2.705	7155	337	59.1	0.237	2.5	67.2	60.6
	230.0	109.8	120.5	46.76	48.49	2.732	7207	221	37.1	0.098	1.0	67.0	60.1
PUT OZ-FT	230.0	190.1	192.7	4.43	5.43	4.305	790	1776	34.5	0.730	68.9	77.5	59.3

Performance Data



Wiring Diagram





Part
No

1K075BE



INDUSTRIAL MOTOR

HP: 2

VOLTS: 115/208-230

AMPS: 18.9/10.3-9.4

RPM: 1725

DUTY: CONT

SF: 1.0

KVA CODE : H

MTR REF: T63DMW-2003

THERMALLY PROTECTED: NONE

PROT. CODE. ☐ ☐ MFG. NO. ☐ ☐

S.F. AT 208 VOLTS IS 1.0

PH: 1

HZ: 60

FR: 56C

INS CL: F

AMB: 40 °C

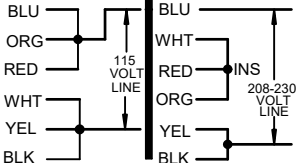
SFA:

ENCL: TEFC

**Disconnect Power Before Making
Any Electrical Connections or Changes**

CONNECTIONS

UNGROUND
SIDE OF LINE



**MOTOR IS CCW ROTATION LEAD END
TO REVERSE ROTATION INTERCHANGE
RED AND BLACK LEADS**



258501



E47479

Mfd for Dayton Electric Mfg. Co., Lake Forest, IL 60045 USA

Made in Mexico