

MARKETS SERVED:

FIRE MILITARY INDUSTRIAL LAW ENFORCEMENT OUTDOOR DIVE



Dear Customer,

Our continued global expansion is evidenced by the recent acquisition of the leading Australian manufacturer of rotationally molded storage and transit cases, Trimcast, Pty. Ltd. This acquisition is an example that underscores our companywide commitment to bringing to market the widest variety of high-impact, protective case solutions in the world. As such, in the coming months, we will be rolling out several more new products, services and technologies. With market research and feedback from our customers, I'm confident that our new products will meet needs not met by any other case company.

Additional advancements include the increase in our standardized solution products, the Pelican Select Set offering. You'll find this group under the Pelican-Hardigg™ brand in the following pages. It includes an array of single lid cases, extra large shipping containers, rackmount cases for electronics, and specialty products such as the mobile field desk.

You'll also find within a focus on Advanced Case Solutions which leverages years of customization experience and a business model that literally executes on the promise "Protecting All That You value". Pelican-Hardigg Advanced Case Solutions Centers provide a high level of case, cushioning and protective solutions. These solutions include everything from layered foam cushioning to extremely complex metal work and mechanized enhancements.

With one call, you can bring the expertise of more than 70 engineers, manufacturing facilities (USA, Europe and Australia), and strategically located solution centers to any technical challenge or deadline you face.

Please take a moment to peruse the pages herein and let us know how we can support your protector case needs.

CONTENTS

1	Message from the President and CEO
	PELICAN™ CASE
3-4	Anatomy of a Pelican Case
5-8	Memory Card Cases/Micro Cases
9-10	Small Cases
11-14	Medium Cases
15-20	Digital Protection Cases
21-26	Large Cases
27-28	Long Cases
29-30	Pelican Organization Solutions
31-33	Pelican Case Specifications
34	Pelican Case Accessories
	PELICAN™ STORM CASE™
35-36	Anatomy of a Pelican Storm Case
37-38	Small Cases
39-40	Medium Cases
41-42	Large Cases
43-44	Long Cases
45-46	Pelican Storm Organization Solutions
47-48	Pelican Storm Case Specifications
	PELICAN-HARDIGG™ SELECT SETS
49-50	Select Set - More Than A Box
51-52	472 Cases
53-56	Single Lid
57-59	Specialty Products
60	Rackmount
61	Versafill™ /Miscellaneous Products

ULTIMATE EQUIPMENT PROTECTION



For over 30 years Pelican Products has built a reputation for manufacturing the toughest Protector Case™ in the world. As a matter of fact, we invented the category. Over these years we've seen our cases used for some fairly crazy activities... and important ones, too. Pelican™ cases have been thrown out of helicopters in Iraq, floated through frigid fjords in Norway and rolled over by SUVs in Tanzania. With only a few

scratches to show on the outside, contents inside are left unscathed. These are minor details for major bragging rights. And that is really what it's all about. Getting your gear from point A to point B in the condition it's meant to be in: intact and functional. Because it might contain a large format camera that will shoot next month's magazine cover or a heart defibrillator that could save a person's life, you can't put a price on it.

ANATOMY OF A PELICAN™ CASE



STRONGER BY DESIGN

Pelican™ cases are made with a proprietary combination of homo-polymers and co-polymers, using an open cell core and solid wall construction, which is stronger and lighter than a solid core wall. Stainless steel pins are used in hinges and handles.

A WATERTIGHT

The secret is the tongue and groove fit with a polymer o-ring acting as a waterproof seal.

B EASY ROLLER

Stainless steel ball bearing wheels last longer and ride smoother. The nylon hub adjacent to the stainless steel is made to resist heat. The result is less wear and tear on the polyurethane wheel.

C REINFORCED PADLOCK PROTECTORS

Stainless steel reinforced padlock protectors provide added strength and extra security against cutting and theft.

D DOUBLE-THROW LATCHES

The Double-Throw latches are smarter and easier to open: it's the classic "C" clamp design with a secondary movement that works like a pry bar to start the release and offers plenty of leverage to open with a light pull.

E FOAM

All Pelican™ cases (except Micro Case Series™ cases, Memory Card Cases, 1780W, 1780HL, and 1780RF) come standard with Pick N Pluck™ foam. 1700, 1720, 1750 Cases come standard with 3 piece foam sets. Replacement foam is available for all models (except Memory Card Cases, i1010, and i1030, i1015). To order a case with no foam, add NF to the catalog number.

F NAMEPLATE

Custom engraved nameplates are available for a nominal fee.

G COOL UNDER PRESSURE

The Automatic Pressure Equalization Valve releases built-up air pressure while keeping water molecules out, resulting in a water-tight case that is even easier to open.

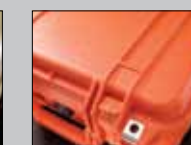
COLORS



BLACK



DESERT TAN



ORANGE



SILVER



YELLOW



BLUE



*OD GREEN

* OD green available upon request / Case contents not included



MEMORY CARD CASES

- Water resistant seal
- Lightweight insert liner absorbs shock and protects memory cards
- Made of tough Polycarbonate resin

0915 MEMORY CARD CASE



5.55" x 3.27" x 0.85"
(14.1 x 8.3 x 2.2 cm)

4.79" x 2.25" x 0.55"
(12.2 x 5.7 x 1.4 cm)

N/A

.22 lbs. (0.1 kg) WITH LINER



N/A

N/A

EXTERIOR DIMENSIONS

INTERIOR DIMENSIONS

LID/BOTTOM DEPTH

WEIGHT

COLORS

AVAILABLE ACCESSORIES

CERTIFICATES

0945 MEMORY CARD CASE



5.55" x 3.27" x 0.85"
(14.1 x 8.3 x 2.2 cm)

4.79" x 2.25" x 0.55"
(12.2 x 5.7 x 1.4 cm)

N/A

.21 lbs. (0.1 kg) WITH LINER



N/A

N/A

Case contents not included

MICRO CASE SERIES™

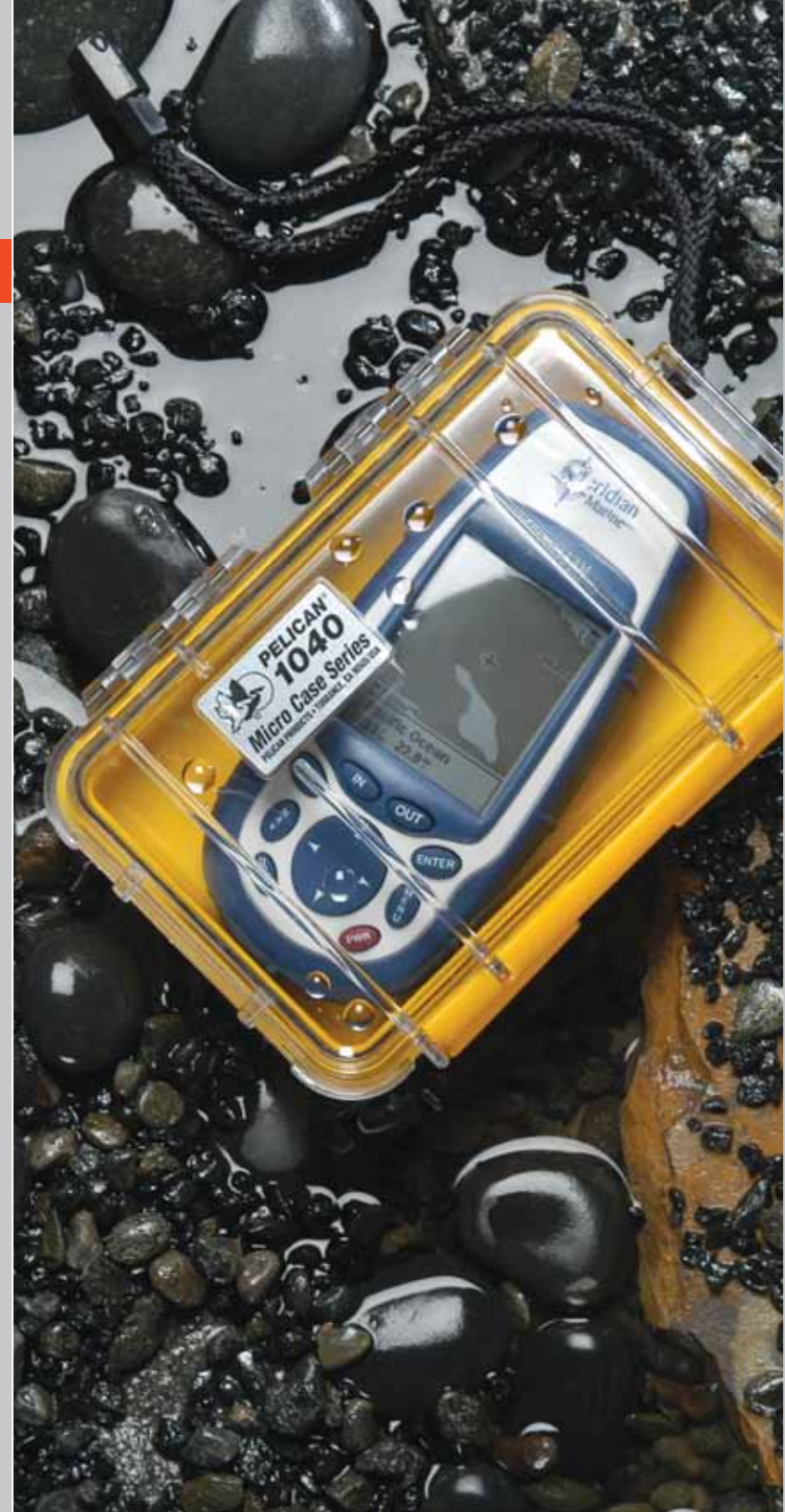
From small sensitive components and precision tools to portable MP3 players and smart phones. Protect your gear from the elements in a Micro Case Series™ case and eliminate the worries.



CASE | I1015 CASE

■ **INTERIOR DIMENSIONS:**
5.14" x 2.64" x 1.37"
(13.1 x 6.7 x 3.5 cm)

■ **EXTERIOR DIMENSIONS:**
6.68" x 3.88" x 1.86"
(17 x 9.9 x 4.7 cm)



1010 MICRO CASE

EXTERIOR DIMENSIONS	5.88" x 4.06" x 2.12" (14.9 x 10.3 x 5.4 cm)
INTERIOR DIMENSIONS	4.37" x 2.87" x 1.68" (11.1 x 7.3 x 4.3 cm)
LID/BOTTOM DEPTH	0.69" / 0.94" (1.8 cm / 2.4 cm)
WEIGHT	0.41 lbs. (0.19 kg) WITH FOAM 0.4 lbs. (0.18 kg) NO FOAM
COLORS	
AVAILABLE ACCESSORIES	Replacement case liner, Pick N Pluck™ foam insert
CERTIFICATES	IP67

11010 MICRO CASE

EXTERIOR DIMENSIONS	5.88" x 4.06" x 2.12" (14.9 x 10.3 x 5.4 cm)
INTERIOR DIMENSIONS	4.37" x 2.87" x 1.68" (11.1 x 7.3 x 4.3 cm)
LID/BOTTOM DEPTH	0.69" / 0.94" (1.8 cm / 2.4 cm)
WEIGHT	0.41 lbs. (0.19 kg)
COLORS	
AVAILABLE ACCESSORIES	N/A
CERTIFICATES	N/A

1015 MICRO CASE

EXTERIOR DIMENSIONS	6.68" x 3.88" x 1.86" (17 x 9.9 x 4.7 cm)
INTERIOR DIMENSIONS	5.14" x 2.64" x 1.37" (13.1 x 6.7 x 3.5 cm)
LID/BOTTOM DEPTH	0.43"(1.1 cm)/ 0.94" (2.4 cm)
WEIGHT	0.46 lbs. (0.21 kg)
COLORS	
AVAILABLE ACCESSORIES	Replacement case liner
CERTIFICATES	N/A

i1015 CASE FITS MODELS: iPhone® • BlackBerry® Curve/Storm/Pearl/Bold • T-Mobile® G1/ MyTouch 3G Motorola Droid/Cliq • Nokia 5800/5530/N97 Mini/E63/E71/E71x/E75/N79/N78

EXTERIOR DIMENSIONS	6.68" x 3.88" x 1.86" (17 x 9.9 x 4.7 cm)
INTERIOR DIMENSIONS	5.14" x 2.64" x 1.37" (13.1 x 6.7 x 3.5 cm)
LID/BOTTOM DEPTH	0.43"(1.1 cm)/ 0.94" (2.4 cm)
WEIGHT	0.49 lbs. (0.22 kg)
COLORS	
AVAILABLE ACCESSORIES	Replacement case liner
CERTIFICATES	N/A

1020 MICRO CASE

EXTERIOR DIMENSIONS	6.82" x 4.75" x 2.12" (17.3 x 12.1 x 5.4 cm)
INTERIOR DIMENSIONS	5.31" x 3.56" x 1.68" (13.5 x 9 x 4.3 cm)
LID/BOTTOM DEPTH	0.69" / 0.94" (1.8 cm / 2.4 cm)
WEIGHT	0.56 lbs. (0.25 kg) WITH FOAM 0.55 lbs. (0.25 kg) NO FOAM
COLORS	
AVAILABLE ACCESSORIES	Replacement case liner, Pick N Pluck™ foam insert
CERTIFICATES	IP67

1030 MICRO CASE

EXTERIOR DIMENSIONS	7.50" x 3.87" x 2.43" (19 x 9.8 x 6.2 cm)
INTERIOR DIMENSIONS	6.37" x 2.62" x 2.06" (16.2 x 6.7 x 5.2 cm)
LID/BOTTOM DEPTH	0.69" / 1.25" (1.8 cm / 3.2 cm)
WEIGHT	0.61 lbs. (0.28 kg) WITH FOAM 0.6 lbs. (0.27 kg) NO FOAM
COLORS	
AVAILABLE ACCESSORIES	Replacement case liner, Pick N Pluck™ foam insert
CERTIFICATES	IP67

1040 MICRO CASE

EXTERIOR DIMENSIONS	7.50" x 5.06" x 2.12" (19 x 12.8 x 5.4 cm)
INTERIOR DIMENSIONS	6.50" x 3.87" x 1.75" (16.5 x 9.8 x 4.4 cm)
LID/BOTTOM DEPTH	0.69" / 0.94" (1.8 cm / 2.4 cm)
WEIGHT	0.71 lbs. (0.32 kg) WITH FOAM 0.7 lbs. (0.32 kg) NO FOAM
COLORS	
AVAILABLE ACCESSORIES	Replacement case liner Pick N Pluck™ foam insert
CERTIFICATES	IP67

1050 MICRO CASE

EXTERIOR DIMENSIONS	7.50" x 5.06" x 3.12" (19 x 12.8 x 7.9 cm)
INTERIOR DIMENSIONS	6.31" x 3.68" x 2.75" (16 x 9.3 x 7 cm)
LID/BOTTOM DEPTH	0.69" / 1.94" (1.8 cm / 4.9 cm)
WEIGHT	0.83 lbs. (0.38 kg) WITH FOAM 0.81 lbs. (0.37 kg) NO FOAM
COLORS	
AVAILABLE ACCESSORIES	Replacement case liner Pick N Pluck™ foam insert
CERTIFICATES	IP67

1060 MICRO CASE

EXTERIOR DIMENSIONS	9.37" x 5.56" x 2.62" (23.8 x 14.1 x 6.7 cm)
INTERIOR DIMENSIONS	8.25" x 4.25" x 2.25" (20.9 x 10.8 x 5.7 cm)
LID/BOTTOM DEPTH	0.69" / 1.44" (1.8 cm / 3.7 cm)
WEIGHT	1.03 lbs. (0.47 kg) WITH FOAM 1 lbs. (0.45 kg) NO FOAM
COLORS	
AVAILABLE ACCESSORIES	Replacement case liner Pick N Pluck™ foam insert
CERTIFICATES	IP67



Lightweight but extremely strong; compact yet fully capable. Perfect for valuable gear like hand tools and small to medium electronic components, handheld GPS systems, and DSLR cameras.

SMALL CASES

1120 CASE



8.12" x 6.56" x 3.56" (20.6 x 16.7 x 9 cm)
7.25" x 4.75" x 3.06" (18.4 x 12.1 x 7.8 cm)
0.50" / 2.56" (1.3 cm / 6.5 cm)
1.23 lbs. (0.56 kg) WITH FOAM 1.17 lbs. (0.53 kg) NO FOAM
Panel frame, 3 pc. replacement foam set, replacement O-ring
IP67 DEF STAN 81-41/STANAG 4280

EXTERIOR DIMENSIONS

INTERIOR DIMENSIONS

LID/BOTTOM DEPTH

WEIGHT

COLORS

AVAILABLE ACCESSORIES

CERTIFICATES

1200 CASE



10.62" x 9.68" x 4.87" (27 x 24.6 x 12.4 cm)
9.25" x 7.12" x 4.12" (23.5 x 18.1 x 10.5 cm)
1.18" / 2.93" (3 cm / 7.4 cm)
2.87 lbs. (1.3 kg) WITH FOAM 2.65 lbs. (1.2 kg) NO FOAM
Panel frame, 3 pc. replacement foam set, replacement O-ring
IP67 DEF STAN 81-41/STANAG 4280

EXTERIOR DIMENSIONS

INTERIOR DIMENSIONS

LID/BOTTOM DEPTH

WEIGHT

COLORS

AVAILABLE ACCESSORIES

CERTIFICATES

1150 CASE



9.12" x 7.56" x 4.37" (23.2 x 19.2 x 11.1 cm)
8.18" x 5.68" x 3.62" (20.8 x 14.4 x 9.2 cm)
0.75" / 2.87" (1.9 cm / 7.3 cm)
1.98 lbs. (0.9 kg) WITH FOAM 1.76 lbs. (0.8 kg) NO FOAM
Panel frame, 3 pc. replacement foam set, replacement O-ring
IP67 DEF STAN 81-41/STANAG 4280

EXTERIOR DIMENSIONS

INTERIOR DIMENSIONS

LID/BOTTOM DEPTH

WEIGHT

COLORS

AVAILABLE ACCESSORIES

CERTIFICATES

1300 CASE



10.62" x 9.68" x 6.87" (27 x 24.6 x 17.4 cm)
9.87" x 7.00" x 6.12" (25.1 x 17.8 x 15.5 cm)
1.18" / 4.93" (3 cm / 12.5 cm)
3.53 lbs. (1.6 kg) WITH FOAM 3.09 lbs. (1.4 kg) NO FOAM
Panel frame, 3 pc. replacement foam set, replacement O-ring
IP67 DEF STAN 81-41/STANAG 4280

EXTERIOR DIMENSIONS

INTERIOR DIMENSIONS

LID/BOTTOM DEPTH

WEIGHT

COLORS

AVAILABLE ACCESSORIES

CERTIFICATES

1170 CASE



11.64" x 8.34" x 3.78" (29.6 x 21.2 x 9.6 cm)
10.54" x 6.04" x 3.16" (26.8 x 15.3 x 8 cm)
1.08" / 2.08" (2.7 cm / 5.3 cm)
2.10 lbs. (0.95 kg) WITH FOAM 1.96 lbs. (0.89 kg) NO FOAM
3 pc. replacement foam set, replacement O-ring
IP67

EXTERIOR DIMENSIONS

INTERIOR DIMENSIONS

LID/BOTTOM DEPTH

WEIGHT

COLORS

AVAILABLE ACCESSORIES

CERTIFICATES

1400 CASE



13.37" x 11.62" x 6.00" (33.9 x 29.5 x 15.2 cm)
11.81" x 8.87" x 5.18" (30 x 22.5 x 13.2 cm)
1.18" / 4.00" (3 cm / 10.2 cm)
4.41 lbs. (2 kg) WITH FOAM 3.97 lbs. (1.8 kg) NO FOAM
Panel frame, 3 pc. replacement foam set, replacement O-ring
IP67 • MIL C-4150J • DEF STAN 81-41/STANAG 4280 • ATA 300

EXTERIOR DIMENSIONS

INTERIOR DIMENSIONS

LID/BOTTOM DEPTH

WEIGHT

COLORS

AVAILABLE ACCESSORIES

CERTIFICATES



MEDIUM CASES

Still mobile with a little more room for protecting slightly larger gear or multiple instruments and accessories. Interior options are available for extra protection. Select models meet carry-on luggage specifications.

1450 CASE



16.00" x 13.00" x 6.87"
(40.6 x 33 x 17.4 cm)

14.62" x 10.18" x 6.00"
(37.1 x 25.8 x 15.2 cm)

1.75" / 4.25"
(4.4 cm / 10.8 cm)

6.39 lbs. (2.9 kg) WITH FOAM
5.51 lbs. (2.5 kg) NO FOAM

■ ■ ■ ■ ■ *

Panel frame, 3 pc. replacement foam set, replacement O-ring, padded divider set

IP67 • MIL C-4150J
DEF STAN 81-41/STANAG 4280

EXTERIOR DIMENSIONS

INTERIOR DIMENSIONS

LID/BOTTOM DEPTH

WEIGHT

COLORS

AVAILABLE ACCESSORIES

CERTIFICATES

1460 TOOL CASE

NEW



20.85" x 12.73" x 12.75"
(52.9 x 32.3 x 32.4 cm)

18.54" x 9.92" x 10.92"
(47.1 x 25.2 x 27.7 cm)

4.91" / 6.01"
(12.5 cm / 15.3 cm)

13 lbs. (5.9 kg)
WITH TRAY ASSEMBLY

■ ■ ■

Replacement O-ring

IP67

1500 CASE



18.50" x 14.06" x 6.93"
(47 x 35.7 x 17.6 cm)

16.75" x 11.18" x 6.12"
(42.5 x 28.4 x 15.5 cm)

1.81" / 4.31"
(4.6 cm / 10.9 cm)

7.05 lbs. (3.2 kg) WITH FOAM
6.39 lbs. (2.9 kg) NO FOAM

■ ■ ■ ■ ■ *

Panel frame, 3 pc. replacement foam set, replacement O-ring, padded divider set, Photo lid organizer, standard lid organizer

IP67 • MIL C-4150J • DEF STAN 81-41/STANAG 4280 • ATA 300

1500EMS CASE



18.50" x 14.06" x 6.93"
(47 x 35.7 x 17.6 cm)

16.75" x 11.18" x 6.12"
(42.5 x 28.4 x 15.5 cm)

1.81" / 4.31"
(4.6 cm / 10.9 cm)

10 lbs. (4.54 kg)

■ ■ ■

EMS accessory set

IP67 • MIL C-4150J
STANAG 4280 ATA 300

1460 CASE



20.85" x 12.73" x 12.75"
(52.9 x 32.3 x 32.4 cm)

18.54" x 9.92" x 10.92"
(47.1 x 25.2 x 27.7 cm)

4.91" / 6.01"
(12.5 cm / 15.3 cm)

12.48 lbs. (5.66 kg) WITH FOAM
8.75 lbs. (3.97 kg) NO FOAM

■ ■ ■ *

Replacement Foam Set, Replacement O-ring

IP67

EXTERIOR DIMENSIONS

INTERIOR DIMENSIONS

LID/BOTTOM DEPTH

WEIGHT

COLORS

AVAILABLE ACCESSORIES

CERTIFICATES

1460EMS CASE



20.85" x 12.73" x 12.75"
(52.9 x 32.3 x 32.4 cm)

18.54" x 9.92" x 10.92"
(47.1 x 25.2 x 27.7 cm)

4.91" / 6.01"
(12.5 cm / 15.3 cm)

18.2 lbs. (8.26 kg)
WITH TRAY ASSEMBLY

■ ■

Replacement O-ring
Tray system

IP66

EXTERIOR DIMENSIONS

INTERIOR DIMENSIONS

LID/BOTTOM DEPTH

WEIGHT

COLORS

AVAILABLE ACCESSORIES


CERTIFICATES

* OD green available upon request / Case contents not included



Photo by Marek Arcimowicz

1510 CARRY ON CASE

	22.00" x 13.81" x 9.00" (55.9 x 35.1 x 22.9 cm)	EXTERIOR DIMENSIONS
	19.75" x 11.00" x 7.60" (50.1 x 27.9 x 19.3 cm)	INTERIOR DIMENSIONS
	1.79" / 5.79" (4.5 cm / 14.7 cm)	LID/BOTTOM DEPTH
	13.6 lbs. (6.17 kg) WITH FOAM 11.99 lbs. (5.44 kg) NO FOAM	WEIGHT
	 *	COLORS
	4 pc. replacement foam set, replacement O-ring, padded divider set, lid organizer	AVAILABLE ACCESSORIES
IP67 DEF STAN 81-41/STANAG 4280	CERTIFICATES	

1510LOC CASE with computer sleeve and accessories pouch

	22.00" x 13.81" x 9.00" (55.9 x 35.1 x 22.9 cm)	EXTERIOR DIMENSIONS
	19.75" x 11.00" x 7.60" (50.1 x 27.9 x 19.3 cm)	INTERIOR DIMENSIONS
	1.79" / 5.79" (4.5 cm / 14.7 cm)	LID/BOTTOM DEPTH
	13.6 lbs. (6.17 kg)	WEIGHT
	 *	COLORS
	Replacement O-ring	AVAILABLE ACCESSORIES
IP67 DEF STAN 81-41/STANAG 4280	CERTIFICATES	

1510SC with padded dividers and lid organizer

NEW

	22.00" x 13.81" x 9.00" (55.9 x 35.1 x 22.9 cm)	EXTERIOR DIMENSIONS
	19.75" x 11.00" x 7.60" (50.1 x 27.9 x 19.3 cm)	INTERIOR DIMENSIONS
	1.79" / 5.79" (4.5 cm / 14.7 cm)	LID/BOTTOM DEPTH
	13.6 lbs. (6.17 kg)	WEIGHT
	 *	COLORS
	Replacement O-ring	AVAILABLE ACCESSORIES
IP67 DEF STAN 81-41/STANAG 4280	CERTIFICATES	

1510LFC with lid organizer

NEW

	22.00" x 13.81" x 9.00" (55.9 x 35.1 x 22.9 cm)	EXTERIOR DIMENSIONS
	19.75" x 11.00" x 7.60" (50.1 x 27.9 x 19.3 cm)	INTERIOR DIMENSIONS
	1.79" / 5.79" (4.5 cm / 14.7 cm)	LID/BOTTOM DEPTH
	13.6 lbs. (6.17 kg)	WEIGHT
	 *	COLORS
	Replacement O-ring	AVAILABLE ACCESSORIES
IP67 DEF STAN 81-41/STANAG 4280	CERTIFICATES	

1520 CASE

	19.78" x 15.77" x 7.41" (50.2 x 40 x 18.8 cm)	EXTERIOR DIMENSIONS
	18.06" x 12.89" x 6.72" (45.9 x 32.7 x 17.1 cm)	INTERIOR DIMENSIONS
	1.79" / 4.93" (4.5 cm / 12.5 cm)	LID/BOTTOM DEPTH
	9.35 lbs. (4.24 kg) WITH FOAM 8.29 lbs. (3.76 kg) NO FOAM	WEIGHT
	 *	COLORS
	Panel frame, 3 pc. foam set, replacement O-ring, padded divider set, Photo lid organizer, standard lid organizer, convertible travel bag	AVAILABLE ACCESSORIES
IP67 • MIL C-4150J DEF STAN 81-41/STANAG 4280	CERTIFICATES	

* OD green available upon request / Case contents not included

1550 CASE

	20.62" x 16.87" x 8.12" (52.4 x 42.8 x 20.6 cm)	EXTERIOR DIMENSIONS
	18.43" x 14.00" x 7.62" (46.8 x 35.5 x 19.3 cm)	INTERIOR DIMENSIONS
	1.75" / 5.87" (4.4 cm / 14.9 cm)	LID/BOTTOM DEPTH
	11.9 lbs. (5.4 kg) WITH FOAM 10.58 lbs. (4.8 kg) NO FOAM	WEIGHT
	 *	COLORS
	Panel frame, 4 pc foam set, Pick N Pluck™ foam only, replacement O-ring, padded divider set	AVAILABLE ACCESSORIES
IP67 • MIL C-4150J • DEF STAN 81-41/STANAG 4280 • ATA 300	CERTIFICATES	

1550EMS CASE

	20.62" x 16.87" x 8.12" (52.4 x 42.8 x 20.6 cm)	EXTERIOR DIMENSIONS
	18.43" x 14.00" x 7.62" (46.8 x 35.5 x 19.3 cm)	INTERIOR DIMENSIONS
	1.75" / 5.87" (4.4 cm / 14.9 cm)	LID/BOTTOM DEPTH
	15 lbs. (6.8 kg)	WEIGHT
		COLORS
	EMS Accessory Set	AVAILABLE ACCESSORIES
IP67 • MIL C-4150J STANAG 4280 • ATA 300	CERTIFICATES	



DIGITAL PROTECTION CASES

Mobility and protection in one. Pelican's digital protection cases accommodate everything from eReaders, tablets, and netbooks to laptops up to 15 inches. Select models have ample room and compartments for accessories and peripherals.



Go to www.pelican.com/hardback/fit_guide.php for device fit guide

1055CC HARDBACK™ CASE

NEW



Fits 7" tablets, eBook readers, Zoom and Kindle Fire

9.42" x 7.02" x 1.24"
(23.9 x 17.8 x 3.1 cm)
8.55" x 5.52" x 0.85"
(21.7 x 14 x 2.2 cm)
0.43" / 0.43"
(1.1 cm / 1.1 cm)
0.82 lbs. (0.37 kg) WITH FOAM
0.75 lbs. (0.34 kg) NO FOAM

1055CC with Liner

N/A

EXTERIOR DIMENSIONS

INTERIOR DIMENSIONS

LID/BOTTOM DEPTH

WEIGHT

COLORS

AVAILABLE MODELS

CERTIFICATES

1075/1075CC HARDBACK™ CASE

NEW



Fits Netbooks and 10.1" tablets

1075CC
shown with
Laptop liner

12.38" x 9.75" x 2.13"
(31.4 x 24.8 x 5.4 cm)
11.11" x 7.92" x 1.63"
(28.2 x 20.1 x 4.1 cm)
0.81" / 0.81"
(2.1 cm / 2.1 cm)
1.54 lbs. (0.7 kg) WITH FOAM
1.41 lbs. (0.64 kg) NO FOAM

1075 with Pick N Pluck™
convoluted lid foam
1075CC with Netbook Liner

N/A

EXTERIOR DIMENSIONS

INTERIOR DIMENSIONS

LID/BOTTOM DEPTH

WEIGHT

COLORS

AVAILABLE MODELS

CERTIFICATES

1065CC HARDBACK™ CASE

NEW



Fits iPad1, iPad2, iPad2 with smart cover and 10" tablets

10.86" x 9.28" x 1.24"
(27.6 x 23.6 x 3.1 cm)
9.96" x 7.76" x 0.81"
(25.3 x 19.7 x 2.1 cm)
0.41" / 0.41"
(1 cm / 1 cm)

1.25 lbs. (0.57 kg) WITH FOAM
0.72 lbs. (0.33 kg) NO FOAM

1065CC with Liner

N/A

EXTERIOR DIMENSIONS

INTERIOR DIMENSIONS

LID/BOTTOM DEPTH

WEIGHT

COLORS

AVAILABLE MODELS

CERTIFICATES

1085/1085CC HARDBACK™ CASE

NEW



Fits 14" Laptops

1085CC
shown with
Laptop liner

15.64" x 12.41" x 2.50"
(39.7 x 31.5 x 6.3 cm)
14.29" x 10.37" x 1.97"
(36.3 x 26.3 x 5 cm)
0.99" / 0.99"
(2.5 cm / 2.5 cm)

2.59 lbs. (1.18 kg) NO FOAM

1085 with Pick N Pluck™
convoluted lid foam
1085CC with Laptop Liner

N/A

EXTERIOR DIMENSIONS

INTERIOR DIMENSIONS

LID/BOTTOM DEPTH

WEIGHT

COLORS

AVAILABLE MODELS

CERTIFICATES

i1075 HARDBACK™ CASE w/ iPad INSERT

NEW



Fits iPad1, iPad2, iPad2 with smart cover

12.38" x 9.75" x 2.13"
(31.4 x 24.8 x 5.4 cm)
11.11" x 7.92" x 1.63"
(28.2 x 20.1 x 4.1 cm)
0.81" / 0.81"
(2.1 cm / 2.1 cm)

2.54 lbs. (1.15 kg) WITH FOAM
1.41 lbs. (0.64 kg) NO FOAM

i1075 with iPad Insert

IP67

EXTERIOR DIMENSIONS

INTERIOR DIMENSIONS

LID/BOTTOM DEPTH

WEIGHT

COLORS

AVAILABLE MODELS

CERTIFICATES

1095/1095CC HARDBACK™ CASE

NEW



Fits 15.6" Laptops

1095CC
shown with
Laptop liner

17.18" x 13.24" x 2.60"
(43.6 x 33.6 x 6.6 cm)
15.78" x 11.16" x 2.06"
(40.1 x 28.3 x 5.2 cm)
1.03" / 1.03"
(2.6 cm / 2.6 cm)

2.92 lbs. (1.32 kg) NO FOAM

1095 with Pick N Pluck™
convoluted lid foam
1095CC with Laptop Liner

N/A

EXTERIOR DIMENSIONS

INTERIOR DIMENSIONS

LID/BOTTOM DEPTH

WEIGHT

COLORS

AVAILABLE MODELS

CERTIFICATES



1430 TOP LOADER CASE



16.93" x 9.61" x 13.42"
(43 x 24.4 x 34.1 cm)
13.56" x 5.76" x 11.70"
(34.4 x 14.6 x 29.7 cm)
2.00" / 9.70"
(5.1 cm / 24.6 cm)
6.5 lbs. (2.95 kg) WITH FOAM
5.6 lbs. (2.54 kg) NO FOAM
■ ■ ■ ■ ■ *
Panel frame, 5 pc. foam set,
replacement O-ring, strap kit,
padded divider set, office divider kit,
boat bracket kit, lid organizer
IP67
DEF STAN 81-41/STANAG 4280

EXTERIOR DIMENSIONS
INTERIOR DIMENSIONS
LID/BOTTOM DEPTH
WEIGHT
COLORS
AVAILABLE ACCESSORIES
CERTIFICATES

1440 TOP LOADER CASE



19.70" x 12.00" x 18.00"
(50 x 30.5 x 45.7 cm)
17.10" x 7.50" x 16.00"
(43.4 x 19 x 40.6 cm)
2.00" / 14.00"
(5.1 cm / 35.5 cm)
16.5 lbs. (7.48 kg) WITH FOAM
14.5 lbs. (6.58 kg) NO FOAM
■ ■ ■ ■ ■ *
Replacement O-ring, 6 pc. foam
set, utility padded divider set and lid
organizer, office divider set and lid
organizer, office lid organizer
IP67
DEF STAN 81-41/STANAG 4280

EXTERIOR DIMENSIONS
INTERIOR DIMENSIONS
LID/BOTTOM DEPTH
WEIGHT
COLORS
AVAILABLE ACCESSORIES
CERTIFICATES

1470 CASE



16.68" x 13.06" x 4.37"
(42.4 x 33.2 x 11.1 cm)
15.62" x 10.43" x 3.75"
(39.7 x 26.5 x 9.5 cm)
1.37" / 2.37"
(3.5 cm / 6 cm)
5.51 lbs. (2.5 kg) WITH FOAM
4.28 lbs. (1.94 kg) NO FOAM
■ ■
Panel frame, 3 pc. replacement
foam set, shoulder strap,
replacement O-ring
MIL C-4150J

EXTERIOR DIMENSIONS
INTERIOR DIMENSIONS
LID/BOTTOM DEPTH
WEIGHT
COLORS
AVAILABLE ACCESSORIES
CERTIFICATES

1490 CASE



19.87" x 13.93" x 4.68"
(50.4 x 35.4 x 11.9 cm)
17.75" x 11.37" x 4.12"
(45.1 x 28.9 x 10.5 cm)
1.50" / 2.62"
(3.8 cm / 6.7 cm)
6.5 lbs. (2.95 kg) WITH FOAM
5.47 lbs. (2.48 kg) NO FOAM
■ ■
Panel frame, 3 pc. foam set,
shoulder strap, replacement O-ring,
computer lid organizer, computer
bottom insert
DEF STAN 81-41/STANAG 4280

1490CC1 CASE



19.87" x 13.93" x 4.68"
(50.4 x 35.4 x 11.9 cm)
17.75" x 11.37" x 4.12"
(45.1 x 28.9 x 10.5 cm)
1.50" / 2.62"
(3.8 cm / 6.7 cm)
6.5 lbs. (2.95 kg) WITH FOAM
5.47 lbs. (2.48 kg) NO FOAM
■ ■
Replacement O-ring, computer lid
organizer, computer bottom insert
DEF STAN 81-41/STANAG 4280

1490CC2 CASE



19.87" x 13.93" x 4.68"
(50.4 x 35.4 x 11.9 cm)
17.75" x 11.37" x 4.12"
(45.1 x 28.9 x 10.5 cm)
1.50" / 2.62"
(3.8 cm / 6.7 cm)
6.5 lbs. (2.95 kg) WITH FOAM
5.47 lbs. (2.48 kg) NO FOAM
■ ■
Replacement O-ring, 2 pc. high
density foam, computer lid organizer
DEF STAN 81-41/STANAG 4280

Case contents not included



EXTERIOR DIMENSIONS
INTERIOR DIMENSIONS
LID/BOTTOM DEPTH
WEIGHT
COLORS
AVAILABLE ACCESSORIES
CERTIFICATES

1495 CASE



21.62" x 17.25" x 4.87" (54.9 x 43.8 x 12.4 cm)
18.87" x 13.12" x 3.81" (47.9 x 33.3 x 9.7 cm)
1.12" / 2.68" (2.8 cm / 6.8 cm)
8.37 lbs. (3.8 kg) WITH FOAM 7.23 lbs. (3.28 kg) NO FOAM
■ ■
Replacement O-ring, 3 pc. foam set, shoulder strap
IP67 DEF STAN 81-41/STANAG 4280

EXTERIOR DIMENSIONS
INTERIOR DIMENSIONS
LID/BOTTOM DEPTH
WEIGHT
COLORS
AVAILABLE ACCESSORIES
CERTIFICATES

1495CC1 CASE



21.62" x 17.25" x 4.87" (54.9 x 43.8 x 12.4 cm)
18.87" x 13.12" x 3.81" (47.9 x 33.3 x 9.7 cm)
1.12" / 2.68" (2.8 cm / 6.8 cm)
11.1 lbs. (5.03 kg)
■ ■
Replacement O-ring, attache/computer lid insert, computer bottom insert, 4 lb. high density foam
IP67 DEF STAN 81-41/STANAG 4280

EXTERIOR DIMENSIONS
INTERIOR DIMENSIONS
LID/BOTTOM DEPTH
WEIGHT
COLORS
AVAILABLE ACCESSORIES
CERTIFICATES

1495CC2 CASE



21.62" x 17.25" x 4.87" (54.9 x 43.8 x 12.4 cm)
18.87" x 13.12" x 3.81" (47.9 x 33.3 x 9.7 cm)
1.12" / 2.68" (2.8 cm / 6.8 cm)
8.99 lbs. (4.08 kg)
■ ■
Replacement O-ring, attache/computer lid insert, computer bottom insert, 4 lb. high density foam
IP67 DEF STAN 81-41/STANAG 4280

* OD green available upon request / Case contents not included



LARGE CASES

Designed for extreme protection during transport and storage. Customizable interiors allow for extra protection and inventory control. Select models feature retractable handles, extra wide grips, and sturdy casters for efficient mobility.



1560 CASE



22.06" x 17.93" x 10.43"
(56 x 45.5 x 26.5 cm)

20.37" x 15.43" x 9.00"
(51.7 x 39.2 x 22.9 cm)

2.00" / 7.00"
(5.1 cm / 17.8 cm)

20 lbs. (9.07 kg) WITH FOAM
17 lbs. (7.71 kg) NO FOAM

■ ■ ■ ■ ■ *

Replacement O-ring, 4 pc. foam set, Pick N Pluck™ foam only, padded divider set, lid organizer

IP67
DEF STAN 81-41/STANAG 4280

EXTERIOR DIMENSIONS

INTERIOR DIMENSIONS

LID/BOTTOM DEPTH

WEIGHT

COLORS

AVAILABLE ACCESSORIES

CERTIFICATES

1560LFC with lid organizer

NEW



22.06" x 17.93" x 10.43"
(56 x 45.5 x 26.5 cm)

20.37" x 15.43" x 9.00"
(51.7 x 39.2 x 22.9 cm)

2.00" / 7.00"
(5.1 cm / 17.8 cm)

20 lbs. (9.07 kg) WITH FOAM
17 lbs. (7.71 kg) NO FOAM

■ ■ ■ *

Replacement O-ring

IP67
DEF STAN 81-41/STANAG 4280

1560LOC with computer sleeve and accessories pouch

NEW



22.06" x 17.93" x 10.43"
(56 x 45.5 x 26.5 cm)

20.37" x 15.43" x 9.00"
(51.7 x 39.2 x 22.9 cm)

2.00" / 7.00"
(5.1 cm / 17.8 cm)

20 lbs. (9.07 kg) WITH FOAM
17 lbs. (7.71 kg) NO FOAM

■ ■ ■ *

Replacement O-ring

IP67
DEF STAN 81-41/STANAG 4280

EXTERIOR DIMENSIONS

INTERIOR DIMENSIONS

LID/BOTTOM DEPTH

WEIGHT

COLORS

AVAILABLE ACCESSORIES

CERTIFICATES

1600 CASE



24.25" x 19.43" x 8.68"
(61.6 x 49.3 x 22 cm)

21.43" x 16.50" x 7.87"
(54.4 x 41.9 x 20 cm)

1.75" / 6.12"
(4.4 cm / 15.5 cm)

14.11 lbs. (6.4 kg) WITH FOAM
13 lbs. (5.9 kg) NO FOAM

■ ■ ■ ■ ■ *

Replacement O-ring, 4 pc. foam set, Pick N Pluck™ foam only, padded divider set, lid organizer

IP67 • MIL C-4150J • DEF STAN 81-41/STANAG 4280 • ATA 300

1560SC with padded dividers and lid organizer

NEW



22.06" x 17.93" x 10.43"
(56 x 45.5 x 26.5 cm)

20.37" x 15.43" x 9.00"
(51.7 x 39.2 x 22.9 cm)

2.00" / 7.00"
(5.1 cm / 17.8 cm)

20 lbs. (9.07 kg) WITH FOAM
17 lbs. (7.71 kg) NO FOAM

■ ■ ■ *

Replacement O-ring

IP67
DEF STAN 81-41/STANAG 4280

EXTERIOR DIMENSIONS

INTERIOR DIMENSIONS

LID/BOTTOM DEPTH

WEIGHT

COLORS

AVAILABLE ACCESSORIES

CERTIFICATES

1600EMS CASE



24.25" x 19.43" x 8.68"
(61.6 x 49.3 x 22 cm)

21.43" x 16.50" x 7.87"
(54.4 x 41.9 x 20 cm)

1.75" / 6.12"
(4.4 cm / 15.5 cm)

18 lbs. (8.16 kg)

■ ■ ■

EMS accessory set

IP67 • MIL C-4150J
STANAG 4280 • ATA 300

* OD green available upon request / Case contents not included

* OD green available upon request / Case contents not included



1620 CASE

EXTERIOR DIMENSIONS	24.64" x 19.39" x 13.78" (62.6 x 49.2 x 35 cm)
INTERIOR DIMENSIONS	21.48" x 16.42" x 12.54" (54.5 x 41.7 x 31.8 cm)
LID/BOTTOM DEPTH	2.01" / 10.53" (5.1 cm / 26.7 cm)
WEIGHT	24.62 lbs. (11.17 kg) WITH FOAM 21.20 lbs. (9.62 kg) NO FOAM
COLORS	*
AVAILABLE ACCESSORIES	Replacement O-ring, 6 pc. foam set, Pick N Pluck™ foam only, padded divider set, lid organizer
CERTIFICATES	IP67 • MIL C-4150J DEF STAN 81-41/STANAG 4280

1630 TRANSPORT CASE

EXTERIOR DIMENSIONS	31.28" x 24.21" x 17.48" (79.4 x 61.5 x 44.4 cm)
INTERIOR DIMENSIONS	27.70" x 20.98" x 15.50" (70.3 x 53.3 x 39.4 cm)
LID/BOTTOM DEPTH	3.25" / 12.14" (8.3 cm / 30.8 cm)
WEIGHT	36 lbs. (16.33 kg) WITH FOAM 31 lbs. (14.06 kg) NO FOAM
COLORS	*
AVAILABLE ACCESSORIES	Replacement O-ring, 5 pc. foam set, Pick N Pluck™ foam only, padded divider set, lid organizer Document Container Accessory
CERTIFICATES	IP67 DEF STAN 81-41/STANAG 4280

1640 TRANSPORT CASE

EXTERIOR DIMENSIONS	27.20" x 27.50" x 16.30" (69.1 x 69.8 x 41.4 cm)
INTERIOR DIMENSIONS	23.70" x 24.00" x 13.90" (60.2 x 60.9 x 35.3 cm)
LID/BOTTOM DEPTH	2.00" / 11.90" (5.1 cm / 30.2 cm)
WEIGHT	38 lbs. (17.24 kg) WITH FOAM 34 lbs. (15.42 kg) NO FOAM
COLORS	*
AVAILABLE ACCESSORIES	Replacement O-ring, 5 pc. foam set, Pick N Pluck™ foam only, padded divider set, lid organizer
CERTIFICATES	IP67 DEF STAN 81-41/STANAG 4280

1610 CASE

EXTERIOR DIMENSIONS	24.83" x 19.69" x 11.88" (63 x 50 x 30.2 cm)
INTERIOR DIMENSIONS	21.78" x 16.69" x 10.62" (55.3 x 42.4 x 27 cm)
LID/BOTTOM DEPTH	2.05" / 8.57" (5.2 cm / 21.8 cm)
WEIGHT	22.3 lbs. (10.12 kg) WITH FOAM 19.5 lbs. (8.85 kg) NO FOAM
COLORS	*
AVAILABLE ACCESSORIES	Replacement O-ring, 5 pc. foam set, Pick N Pluck™ foam only, padded divider set, lid organizer
CERTIFICATES	IP67 DEF STAN 81-41/STANAG 4280

1650 CASE

EXTERIOR DIMENSIONS	31.59" x 20.47" x 12.45" (80.2 x 52 x 31.6 cm)
INTERIOR DIMENSIONS	28.57" x 17.52" x 10.65" (72.5 x 44.5 x 27 cm)
LID/BOTTOM DEPTH	1.81" / 8.84" (4.6 cm / 22.4 cm)
WEIGHT	28.06 lbs. (12.73 kg) WITH FOAM 24.03 lbs. (10.9 kg) NO FOAM
COLORS	*
AVAILABLE ACCESSORIES	Replacement O-ring, 4 pc. foam set, Pick N Pluck™ foam only, padded divider set, photo lid organizer
CERTIFICATES	IP67 • MIL C-4150J • DEF STAN 81-41/STANAG 4280 • ATA 300

1660 CASE

EXTERIOR DIMENSIONS	31.59" x 22.99" x 19.48" (80.2 x 58.4 x 49.5 cm)
INTERIOR DIMENSIONS	28.20" x 19.66" x 17.63" (71.6 x 49.9 x 44.8 cm)
LID/BOTTOM DEPTH	3.50" / 14.14" (8.9 cm / 35.9 cm)
WEIGHT	42.16 lbs. (19.12 kg) WITH FOAM 34.16 lbs. (15.49 kg) NO FOAM
COLORS	*
AVAILABLE ACCESSORIES	Replacement O-ring, 5 pc. foam set, Pick N Pluck™ foam only, padded divider set, photo lid organizer
CERTIFICATES	IP67 DEF STAN 81-41/STANAG 4280

1690 TRANSPORT CASE

EXTERIOR DIMENSIONS	33.36" x 28.44" x 18.23" (84.7 x 72.2 x 46.3 cm)
INTERIOR DIMENSIONS	30.01" x 25.02" x 15.00" (76.2 x 63.5 x 38.1 cm)
LID/BOTTOM DEPTH	2.86" / 12.14" (7.3 cm / 30.8 cm)
WEIGHT	43 lbs. (19.5 kg) WITH FOAM 34 lbs. (15.42 kg) NO FOAM
COLORS	*
AVAILABLE ACCESSORIES	Replacement O-ring, 5 pc. foam set, Pick N Pluck™ foam only, padded divider set, lid organizer
CERTIFICATES	IP67 DEF STAN 81-41/STANAG 4280

* OD green available upon request / Case contents not included

* OD green available upon request / Case contents not included





Use of the military image does not imply or constitute Department of Defense endorsement.

1730 TRANSPORT CASE



37.50" x 27.13" x 14.37" (95.2 x 68.9 x 36.5 cm)
34.00" x 24.00" x 12.50" (86.3 x 60.9 x 31.7 cm)
2.50" / 10.00" (6.3 cm / 25.4 cm)
38 lbs. (17.24 kg) WITH FOAM 30 lbs. (13.61 kg) NO FOAM
■ ■ ■ *
Replacement O-ring, 5 pc. replacement foam set
IP67

EXTERIOR DIMENSIONS
INTERIOR DIMENSIONS
LID/BOTTOM DEPTH
WEIGHT
COLORS
AVAILABLE ACCESSORIES
CERTIFICATES

1780 TRANSPORT CASE



44.90" x 25.32" x 16.50" (114 x 64.3 x 41.9 cm)
42.00" x 22.00" x 15.10" (106.6 x 55.9 x 38.3 cm)
7.58" / 7.30" (19.2 cm / 18.5 cm)
49 lbs. (22.23 kg) WITH FOAM 38.4 lbs. (17.42 kg) NO FOAM
■ ■ ■ *
Replacement O-ring, 6 pc. replacement foam set Pick N Pluck™ foam only
DEF STAN 81-41/STANAG 4280

* OD green available upon request / Case contents not included

0340 CUBE CASE



20.50" x 20.50" x 19.25" (52 x 52 x 48.9 cm)
18.00" x 18.00" x 18.00" (45.7 x 45.7 x 45.7 cm)
4.50" / 13.50" (11.4 cm / 34.3 cm)
29.76 lbs. (13.5 kg) WITH FOAM 24 lbs. (10.89 kg) NO FOAM
■ ■ ■ *
Replacement O-ring, 7 pc. replacement foam set, padded divider set, lid organizer
IP67 DEF STAN 81-41/STANAG 4280

EXTERIOR DIMENSIONS
INTERIOR DIMENSIONS
LID/BOTTOM DEPTH
WEIGHT
COLORS
AVAILABLE ACCESSORIES
CERTIFICATES

0350 CUBE CASE



22.50" x 22.43" x 21.25" (57.1 x 56.9 x 54 cm)
20.00" x 20.00" x 20.00" (50.8 x 50.8 x 50.8 cm)
5.00" / 15.00" (12.7 cm / 38.1 cm)
32.01 lbs. (14.52 kg) WITH FOAM 25.99 lbs. (11.79 kg) NO FOAM
■ ■
Replacement O-ring, 7 pc. foam set, padded divider set, lid organizer, cube case mobility package
IP67 DEF STAN 81-41/STANAG 4280

EXTERIOR DIMENSIONS
INTERIOR DIMENSIONS
LID/BOTTOM DEPTH
WEIGHT
COLORS
AVAILABLE ACCESSORIES
CERTIFICATES

0450 MOBILE TOOL CHEST



23.95" x 14.75" x 17.95" (60.8 x 37.5 x 45.6 cm)
20.56" x 10.97" x 12.65" (52.2 x 27.9 x 32.1 cm)
N/A
33 lbs. (14.97 kg) NO DRAWERS 41.5 lbs. (18.82 kg) WITH DRAWERS
■
Deep drawer, shallow drawer, 4" drawer, top tray, vertical tool pallet and horizontal tool pallet
MIL-STD-810F

0500 TRANSPORT CASE



39.95" x 23.45" x 28.65" (101.4 x 59.5 x 72.7 cm)
34.95" x 18.45" x 25.25" (88.7 x 46.8 x 64.1 cm)
2.25" / 23.00" (5.7 cm / 58.4 cm)
58.6 lbs. (26.58 kg) WITH FOAM 50 lbs. (22.68 kg) NO FOAM
■
7 pc. replacement foam set, caster wheel kit, pallet riser kit document container accessory
N/A

0550 TRANSPORT CASE



51.05" x 27.54" x 22.79" (129.6 x 69.9 x 57.9 cm)
47.57" x 24.07" x 17.68" (120.8 x 61.1 x 44.9 cm)
3.19" / 14.49" (8.1 cm / 36.8 cm)
95 lbs. (43.09 kg) WITH FOAM 79.2 lbs. (35.92 kg) NO FOAM
■
6 pc. replacement foam set, caster wheel kit, pallet riser kit document container accessory
N/A

* OD green available upon request / Case contents not included



LONG CASES

Ideal for weapons but also used by industrial workers for instruments and gear. Equipped with sturdy polyurethane wheels for ease of transport.

1700 LONG CASE



Shown with custom foam set

38.12" x 16.00" x 6.12" (96.8 x 40.6 x 15.5 cm)
35.75" x 13.50" x 5.25" (90.8 x 34.3 x 13.3 cm)
1.75" / 3.50" (4.4 cm / 8.9 cm)
16.98 lbs. (7.7 kg) WITH FOAM 16.09 lbs. (7.3 kg) NO FOAM
■ ■ ■ *
Replacement O-ring, 3 pc. replacement foam set
IP67 • MIL C-4150J DEF STAN 81-41/STANAG 4280

EXTERIOR DIMENSIONS
INTERIOR DIMENSIONS
LID/BOTTOM DEPTH
WEIGHT
COLORS
AVAILABLE ACCESSORIES
CERTIFICATES

1720 LONG CASE



44.37" x 16.00" x 6.12" (112.7 x 40.6 x 15.5 cm)
42.00" x 13.50" x 5.25" (106.6 x 34.3 x 13.3 cm)
1.75" / 3.50" (4.4 cm / 8.9 cm)
18.96 lbs. (8.6 kg) WITH FOAM 16.76 lbs. (7.6 kg) NO FOAM
■ ■ ■ *
Replacement O-ring, 3 pc. replacement foam set
DEF STAN 81-41/STANAG 4280

EXTERIOR DIMENSIONS
INTERIOR DIMENSIONS
LID/BOTTOM DEPTH
WEIGHT
COLORS
AVAILABLE ACCESSORIES
CERTIFICATES

* OD green available upon request / Case contents not included

1740 LONG CASE



44.16" x 16.09" x 14.00" (112.1 x 40.9 x 35.5 cm)
40.98" x 12.92" x 12.51" (104 x 32.8 x 31.8 cm)
2.56" / 9.57" (6.5 cm / 24.3 cm)
27 lbs. (12.25 kg) WITH FOAM 22 lbs. (9.98 kg) NO FOAM
■ ■ ■ *
Replacement O-ring, 6 pc. replacement foam set, document container accessory
IP65

EXTERIOR DIMENSIONS
INTERIOR DIMENSIONS
LID/BOTTOM DEPTH
WEIGHT
COLORS
AVAILABLE ACCESSORIES
CERTIFICATES

1750 LONG CASE



53.00" x 16.00" x 6.12" (134.6 x 40.6 x 15.5 cm)
50.50" x 13.50" x 5.25" (128.2 x 34.3 x 13.3 cm)
1.75" / 3.50" (4.4 cm / 8.9 cm)
25.57 lbs. (11.6 kg) WITH FOAM 23.59 lbs. (10.7 kg) NO FOAM
■ ■ ■ *
Replacement O-ring, 3 pc. replacement foam set
IP67 DEF STAN 81-41/STANAG 4280

EXTERIOR DIMENSIONS
INTERIOR DIMENSIONS
LID/BOTTOM DEPTH
WEIGHT
COLORS
AVAILABLE ACCESSORIES
CERTIFICATES

1770 LONG CASE



57.42" x 18.48" x 11.23" (145.8 x 46.9 x 28.5 cm)
54.58" x 15.58" x 8.63" (138.6 x 39.6 x 21.9 cm)
1.88" / 6.75" (4.8 cm / 17.1 cm)
36 lbs. (16.33 kg) WITH FOAM 29 lbs. (13.15 kg) NO FOAM
■
Replacement O-ring, 4 pc. replacement foam set, document container accessory
N/A

EXTERIOR DIMENSIONS
INTERIOR DIMENSIONS
LID/BOTTOM DEPTH
WEIGHT
COLORS
AVAILABLE ACCESSORIES
CERTIFICATES

* OD green available upon request / Case contents not included

1780HL LONG CASE (with rifle hard liner insert)



44.90" x 25.32" x 16.50" (114 x 64.3 x 41.9 cm)
42.00" x 22.00" x 15.10" (106.6 x 55.9 x 38.3 cm)
7.58" / 7.30" (19.2 cm / 18.5 cm)
68.4 lbs. (31.03 kg) WITH LINER 53 lbs. (24.04 kg) WITH FOAM
■ ■ ■ *
Replacement O-ring, 6 pc. replacement foam set, Pick N Pluck™ foam only
DEF STAN 81-41/STANAG 4280

EXTERIOR DIMENSIONS
INTERIOR DIMENSIONS
LID/BOTTOM DEPTH
WEIGHT
COLORS
AVAILABLE ACCESSORIES
CERTIFICATES





PELICAN ORGANIZATION SOLUTIONS

LID ORGANIZERS

Made of leather or waterproof ballistic nylon with nylon zippers. A multitude of pockets in various sizes protect and keep your gear organized. Installs with Velcro® strips (included) or self tapping screws.

PADDED DIVIDERS

Main dividers that span the length of the case are complemented by varying sizes of subdividers. Velcro® edges make it easy to reposition these dividers into the spaces you need. See individual accessory configurations product listings for availability.



- 1610 PELICAN™ CASE**
- Cat. No. 1614 (shown) 1610 case with padded divider set
 - Cat. No. 1615 divider set

- 0340 CUBE CASE**
(shown with)
- Cat. No. 0349 lid organizer for 0340 Cube Case
 - Cat. No. 0344 0340 with padded divider set

* OD green available upon request / Case contents not included

LID ORGANIZER OPTIONS

CASE	MESH	COMPUTER	PHOTO	EMS
1430			1439 Photo ^A	
1440	1449 Mesh ^A			
1490		1498 Computer ^B		
1495		1495 Computer ^B		
1500	1509 Mesh		1508 Photo	1505 EMS ^B
1510	1519 Mesh ^A			
1520	1509 Mesh		1508 Photo ^B	
1550				1555 EMS ^B
1560	1569 Mesh			1555 EMS ^A
1600	1609 Mesh ^B			
1610	1609 Mesh ^B			
1620	1609 Mesh ^B			
1630	1639 Mesh ^A			
1640	0379 Mesh ^A			
1650	1659 Mesh ^A			
1660	1669 Mesh ^A			
1690	1699 Mesh ^A			
0340	0349 Mesh ^A			
0350	0359 Mesh ^A			
0370	0379 Mesh ^A			

A= With mounting screws **B=** With mounting Velcro®

MESH LID ORGANIZERS present an array of compartments with mesh nylon zipper pockets to house, protect, and organize various gear.

COMPUTER LID ORGANIZERS are styled with deep expandable folder pockets and sleeves for various office attaché style components.

PHOTO LID ORGANIZERS have multiple compartments including an assortment of elastic strapping and mesh nylon zipper pockets to organize and protect photo equipment.

EMS LID ORGANIZER is a specially engineered lid organizer with clear pockets to quickly spot medical supplies in any emergency.

PADDED DIVIDER OPTIONS

CASE	LAYERS	CASE WITH DIVIDERS (CAT. NO.)	DIVIDER SET ONLY (CAT. NO.)
1450	1	1454	1455
1500	1	1504	1505
1510	1	1514	1515
1520	1	1524	1525
1550	1	1554	1555
1560	1	1564	1565
1600	2	1604	1605
1610	1	1614	1615
1620	1	1624	1625
1630	2	1634	1635
1640	2	1644	1645
1650	1	1654	1655
1660	2	1664	1665
1690	2	1694	1695
0340	2	0344	0345
0350	2	0354	0355
0370	2	0374	0375

CASE	EXTERIOR	INTERIOR	LID DEPTH	BOTTOM DEPTH	WEIGHT WITH FOAM	WEIGHT WITHOUT FOAM	COLORS	BUOYANCY MAXIMUM	TEMPERATURE RANGE (MIN/ MAX)	CERTIFICATES	
MEMORY CARD CASES	0915	5.55" x 3.27" x 0.85" (14.1 x 8.3 x 2.2 cm)	4.79" x 2.25" x 0.55" (12.2 x 5.7 x 1.4 cm)	N/A	N/A	.22 lbs. (0.1 kg)	N/A	■	N/A	N/A	-
	0945	5.55" x 3.27" x 0.85" (14.1 x 8.3 x 2.2 cm)	4.79" x 2.25" x 0.55" (12.2 x 5.7 x 1.4 cm)	N/A	N/A	.21 lbs. (0.1 kg)	N/A	■	N/A	N/A	-
MICRO CASE SERIES™	1010	5.88" x 4.06" x 2.12" (14.9 x 10.3 x 5.4 cm)	4.37" x 2.87" x 1.68" (11.1 x 7.3 x 4.3 cm)	0.69" (1.8 cm)	0.94" (2.4 cm)	0.41 lbs. (0.19 kg)	0.4 lbs. (0.18 kg)	■ ■ ■ ■	0.51 lbs. (0.23 kg)	-10 / 199.4° F (-23 / 93° C)	IP67
	i1010	5.88" x 4.06" x 2.12" (14.9 x 10.3 x 5.4 cm)	4.37" x 2.87" x 1.68" (11.1 x 7.3 x 4.3 cm)	0.69" (1.8 cm)	0.94" (2.4 cm)	0.41 lbs. (0.19 kg)	0.4 lbs. (0.18 kg)	■ ■ ■ ■ ■ ■ ■ ■	0.51 lbs. (0.23 kg)	-10 / 199.4° F (-23 / 93° C)	-
	1015	6.68" x 3.88" x 1.86" (17 x 9.9 x 4.7 cm)	5.14" x 2.64" x 1.37" (13.1 x 6.7 x 3.5 cm)	0.43" (1.1 cm)	0.94" (2.4 cm)	N/A	0.46 lbs. (0.21 kg)	■ ■	1.2 lbs. (0.54 kg)	N/A	-
	i1015	6.68" x 3.88" x 1.86" (17 x 9.9 x 4.7 cm)	5.14" x 2.64" x 1.37" (13.1 x 6.7 x 3.5 cm)	0.43" (1.1 cm)	0.94" (2.4 cm)	N/A	0.46 lbs. (0.21 kg)	■	1.2 lbs. (0.54 kg)	N/A	-
	1020	6.82" x 4.75" x 2.12" (16.2 x 12.1 x 5.4 cm)	5.31" x 3.56" x 1.68" (13.5 x 9 x 4.3 cm)	0.69" (1.8 cm)	0.94" (2.4 cm)	0.56 lbs. (0.25 kg)	0.55 lbs. (0.25 kg)	■ ■ ■ ■	0.75 lbs. (0.34 kg)	-10 / 199.4° F (-23 / 93° C)	IP67
	1030	7.50" x 3.87" x 2.43" (19 x 9.8 x 6.2 cm)	6.37" x 2.62" x 2.06" (16.2 x 6.7 x 5.2 cm)	0.69" (1.8 cm)	1.25" (3.2 cm)	0.61 lbs. (0.28 kg)	0.6 lbs. (0.27 kg)	■ ■ ■ ■	0.99 lbs. (0.45 kg)	-10 / 199.4° F (-23 / 93° C)	IP67
	1040	7.50" x 5.06" x 2.12" (19 x 12.8 x 5.4 cm)	6.50" x 3.87" x 1.75" (16.5 x 9.8 x 4.4 cm)	0.69" (1.8 cm)	0.94" (2.4 cm)	0.71 lbs. (0.32 kg)	0.7 lbs. (0.32 kg)	■ ■ ■ ■	1.26 lbs. (0.57 kg)	-10 / 199.4° F (-23 / 93° C)	IP67
	1050	7.50" x 5.06" x 3.12" (19 x 12.8 x 7.9 cm)	6.31" x 3.68" x 2.75" (16 x 9.3 x 7 cm)	0.69" (1.8 cm)	1.94" (4.9 cm)	0.83 lbs. (0.38 kg)	0.81 lbs. (0.37 kg)	■ ■ ■ ■	1.74 lbs. (0.79 kg)	-10 / 199.4° F (-23 / 93° C)	IP67
	1060	9.37" x 5.56" x 2.62" (23.8 x 14.1 x 6.7 cm)	8.25" x 4.25" x 2.25" (20.9 x 10.8 x 5.7 cm)	0.69" (1.8 cm)	1.44" (3.7 cm)	1.03 lbs. (0.47 kg)	1 lbs. (0.45 kg)	■ ■ ■ ■	2.49 lbs. (1.13 kg)	-10 / 199.4° F (-23 / 93° C)	IP67
	SMALL CASES	1120	8.12" x 6.56" x 3.56" (20.6 x 16.7 x 9 cm)	7.25" x 4.75" x 3.06" (18.4 x 12.1 x 7.8 cm)	0.50" (1.3 cm)	2.56" (6.5 cm)	1.23 lbs. (0.56 kg)	1.17 lbs. (0.53 kg)	■ ■ ■ ■ ■ ■ ■ *	5 lbs. (2.27 kg)	-40 / 210° F (-40 / 99° C)
1150		9.12" x 7.56" x 4.37" (23.2 x 19.2 x 11.1 cm)	8.18" x 5.68" x 3.62" (20.8 x 14.4 x 9.2 cm)	0.75" (1.9 cm)	2.87" (7.3 cm)	1.98 lbs. (0.9 kg)	1.76 lbs. (0.8 kg)	■ ■ ■ ■ ■ ■ ■ *	8 lbs. (3.63 kg)	-40 / 210° F (-40 / 99° C)	IP67 • DEF STAN 81-41/ STANAG 4280
1170		11.64" x 8.34" x 3.78" (29.6 x 21.2 x 9.6 cm)	10.54" x 6.04" x 3.16" (26.8 x 15.3 x 8 cm)	1.08" (2.7 cm)	2.08" (5.3 cm)	2.10 lbs. (0.95 kg)	1.96 lbs. (0.89 kg)	■ ■ ■ ■ ■ ■ ■ *	7.25 lbs. (3.29 kg)	-40 / 210° F (-40 / 99° C)	IP67
1200		10.62" x 9.68" x 4.87" (27 x 24.6 x 12.4 cm)	9.25" x 7.12" x 4.12" (23.5 x 18.1 x 10.5 cm)	1.18" (3 cm)	2.93" (7.4 cm)	2.87 lbs. (1.3 kg)	2.65 lbs. (1.2 kg)	■ ■ ■ ■ ■ ■ ■ *	12.02 lbs. (5.45 kg)	-40 / 210° F (-40 / 99° C)	IP67 • DEF STAN 81-41/ STANAG 4280
1300		10.62" x 9.68" x 6.87" (27 x 24.6 x 17.4 cm)	9.87" x 7.00" x 6.12" (25.1 x 17.8 x 15.5 cm)	1.18" (3 cm)	4.93" (12.5 cm)	3.53 lbs. (1.6 kg)	3.09 lbs. (1.4 kg)	■ ■ ■ ■ ■ ■ ■ *	12.35 lbs. (5.6 kg)	-40 / 210° F (-40 / 99° C)	IP67 • DEF STAN 81-41/ STANAG 4280
1400		13.37" x 11.62" x 6.00" (33.9 x 29.5 x 15.2 cm)	11.81" x 8.87" x 5.18" (30 x 22.5 x 13.2 cm)	1.18" (3 cm)	4.00" (10.2 cm)	4.41 lbs. (2 kg)	3.97 lbs. (1.8 kg)	■ ■ ■ ■ ■ ■ ■ *	20.06 lbs. (9.1 kg)	-40 / 210° F (-40 / 99° C)	IP67 • MIL C-4150J • DEF STAN 81-41/STANAG 4280 • ATA 300
MEDIUM CASES	1450	16.00" x 13.00" x 6.87" (40.6 x 33 x 17.4 cm)	14.62" x 10.18" x 6.00" (37.1 x 25.8 x 15.2 cm)	1.75" (4.4 cm)	4.25" (10.8 cm)	6.39 lbs. (2.9 kg)	5.51 lbs. (2.5 kg)	■ ■ ■ ■ ■ ■ ■ *	30 lbs. (13.61 kg)	-40 / 210° F (-40 / 99° C)	IP67 • MIL C-4150J • DEF STAN 81-41/STANAG 4280
	1460	20.85" x 12.73" x 12.75" (52.9 x 32.3 x 32.4 cm)	18.54" x 9.92" x 10.92" (47.1 x 25.2 x 27.7 cm)	4.91" (12.5 cm)	6.01" (15.3 cm)	12.48 lbs. (5.66 kg)	8.75 lbs. (3.97 kg)	■ ■ ■ ■ *	82 lbs. (37.19 kg)	-40 / 210° F (-40 / 99° C)	N/A
	1500	18.50" x 14.06" x 6.93" (47 x 35.7 x 17.6 cm)	16.75" x 11.18" x 6.12" (42.5 x 28.4 x 15.5 cm)	1.81" (4.6 cm)	4.31" (10.9 cm)	7.05 lbs. (3.2 kg)	6.39 lbs. (2.9 kg)	■ ■ ■ ■ ■ ■ ■ *	50 lbs. (22.68 kg)	-40 / 210° F (-40 / 99° C)	IP67 • MIL C-4150J • DEF STAN 81-41/STANAG 4280 • ATA 300
	1510	22.00" x 13.81" x 9.00" (55.9 x 35.1 x 22.9 cm)	19.75" x 11.00" x 7.60" (50.1 x 27.9 x 19.3 cm)	1.79" (4.5 cm)	5.79" (14.7 cm)	13.6 lbs. (6.17 kg)	11.99 lbs. (5.44 kg)	■ ■ ■ ■ *	64.15 lbs. (29.1 kg)	-40 / 210° F (-40 / 99° C)	IP67 • DEF STAN 81-41/ STANAG 4280
	1520	19.78" x 15.77" x 7.41" (50.2 x 40 x 18.8 cm)	18.06" x 12.89" x 6.72" (45.9 x 32.7 x 17.1 cm)	1.79" (4.5 cm)	4.93" (12.5 cm)	9.35 lbs. (4.24 kg)	8.29 lbs. (3.76 kg)	■ ■ ■ ■ ■ ■ ■ *	63 lbs. (28.58 kg)	-40 / 210° F (-40 / 99° C)	IP67 • MIL C-4150J • DEF STAN 81-41/STANAG 4280
	1550	20.62" x 16.87" x 8.12" (52.4 x 42.8 x 20.6 cm)	18.43" x 14.00" x 7.62" (46.8 x 35.5 x 19.3 cm)	1.75" (4.4 cm)	5.87" (14.9 cm)	11.9 lbs. (5.4 kg)	10.58 lbs. (4.8 kg)	■ ■ ■ ■ ■ ■ ■ *	69.89 lbs. (31.7 kg)	-40 / 210° F (-40 / 99° C)	IP67 • MIL C-4150J • DEF STAN 81-41/STANAG 4280 • ATA 300

CASE	EXTERIOR	INTERIOR	LID DEPTH	BOTTOM DEPTH	WEIGHT WITH FOAM	WEIGHT WITHOUT FOAM	COLORS	BUOYANCY MAXIMUM	TEMPERATURE RANGE (MIN/ MAX)	CERTIFICATES	
LAPTOP CASES	1055	9.42" x 7.02" x 1.24" (23.9 x 17.8 x 3.1 cm)	8.55" x 5.52" x 0.85" (21.7 x 14 x 2.2 cm)	0.43" (1.1 cm)	0.43" (1.1 cm)	N/A	N/A	■	N/A	-10 / 120° F (-23 / 49° C)	-
	1065	10.86" x 9.28" x 1.24" (27.6 x 23.6 x 3.1 cm)	9.96" x 7.76" x 0.81" (25.3 x 19.7 x 2.1 cm)	0.41" (1 cm)	0.41" (1 cm)	N/A	N/A	■	N/A	-10 / 120° F (-23 / 49° C)	-
	1075	12.38" x 9.75" x 2.13" (31.4 x 24.8 x 5.4 cm)	11.11" x 7.92" x 1.63" (28.2 x 20.1 x 4.1 cm)	0.81" (2.1 cm)	0.81" (2.1 cm)	1.54 lbs. (0.7 kg)	1.41 lbs. (0.64 kg)	■	N/A	-10 / 120° F (-23 / 49° C)	-
	1085	15.64" x 12.41" x 2.50" (39.7 x 31.5 x 6.3 cm)	14.29" x 10.37" x 1.97" (36.3 x 26.3 x 5 cm)	0.99" (2.5 cm)	0.99" (2.5 cm)	N/A	2.59 lbs. (1.18 kg)	■	N/A	-10 / 120° F (-23 / 49° C)	-
	1095	17.18" x 13.24" x 2.60" (43.6 x 33.6 x 6.6 cm)	15.78" x 11.16" x 2.06" (40.1 x 28.3 x 5.2 cm)	1.03" (2.6 cm)	1.03" (2.6 cm)	N/A	2.92 lbs. (1.32 kg)	■	N/A	-10 / 120° F (-23 / 49° C)	-
	1430	16.93" x 9.61" x 13.42" (43 x 24.4 x 34.1 cm)	13.56" x 5.76" x 11.70" (34.4 x 14.6 x 29.7 cm)	2.00" (5.1 cm)	9.70" (24.6 cm)	6.5 lbs. (2.95 kg)	5.6 lbs. (2.54 kg)	■ ■ ■ ■ ■ *	59 lbs. (26.8 kg)	-40 / 210° F (-40 / 99° C)	IP67 DEF STAN 81-41/STANAG 4280
	1440	19.70" x 12.00" x 18.00" (50 x 30.5 x 45.7 cm)	17.10" x 7.50" x 16.00" (43.4 x 19 x 40.6 cm)	2.00" (5.1 cm)	14.00" (35.5 cm)	16.5 lbs. (7.48 kg)	14.5 lbs. (6.58 kg)	■ ■ ■ ■ ■ *	150 lbs. (68.0 kg)	-40 / 210° F (-40 / 99° C)	IP67 DEF STAN 81-41/STANAG 4280
	1470	16.68" x 13.06" x 4.37" (42.4 x 33.2 x 11.1 cm)	15.62" x 10.43" x 3.75" (39.7 x 26.5 x 9.5 cm)	1.37" (3.5 cm)	2.37" (6 cm)	5.51 lbs. (2.5 kg)	4.28 lbs. (1.94 kg)	■ ■	25 lbs. (11.3 kg)	-40 / 210° F (-40 / 99° C)	IP57 MIL C-4150J
	1490	19.87" x 13.93" x 4.68" (50.4 x 35.4 x 11.9 cm)	17.75" x 11.37" x 4.12" (45.1 x 28.9 x 10.5 cm)	1.50" (3.8 cm)	2.62" (6.7 cm)	6.5 lbs. (2.95 kg)	5.47 lbs. (2.48 kg)	■ ■	41 lbs. (18.6 kg)	-40 / 210° F (-40 / 99° C)	IP57 • DEF STAN 81-41/STANAG 4280
	1495	21.62" x 17.25" x 4.87" (54.9 x 43.8 x 12.4 cm)	18.87" x 13.12" x 3.81" (47.9 x 33.3 x 9.7 cm)	1.12" (2.8 cm)	2.68" (6.8 cm)	8.37 lbs. (3.8 kg)	7.23 lbs. (3.28 kg)	■ ■	45.2 lbs. (20.5 kg)	-40 / 210° F (-40 / 99° C)	IP67 DEF STAN 81-41/STANAG 4280
LARGE CASES	1560	22.06" x 17.93" x 10.43" (56 x 45.5 x 26.5 cm)	20.37" x 15.43" x 9.00" (51.7 x 39.2 x 22.9 cm)	2.00" (5.1 cm)	7.00" (17.8 cm)	17 lbs. (7.71 kg)	104 lbs. (47.17 kg)	■ ■ ■ ■ ■	115 lbs. (52.16 kg)	-40 / 210° F (-40 / 99° C)	IP67 DEF STAN 81-41/STANAG 4280
	1600	24.25" x 19.43" x 8.68" (61.6 x 49.3 x 22 cm)	21.43" x 16.50" x 7.87" (54.4 x 41.9 x 20 cm)	1.75" (4.4 cm)	6.12" (15.5 cm)	14.11 lbs. (6.4 kg)	13 lbs. (5.9 kg)	■ ■ ■ ■ ■ *	117 lbs. (53.07 kg)	-40 / 210° F (-40 / 99° C)	IP67 • MIL C-4150J • DEF STAN 81-41/STANAG 4280 • ATA 300
	1610	24.83" x 19.69" x 11.88" (63 x 50 x 30.2 cm)	21.78" x 16.69" x 10.62" (55.3 x 42.4 x 27 cm)	2.06" (5.2 cm)	8.50" (21.6 cm)	22.49 lbs. (10.2 kg)	20 lbs. (9.07 kg)	■ ■ ■ ■ *	120 lbs. (54.4 kg)	-40 / 210° F (-40 / 99° C)	IP67 • DEF STAN 81-41/STANAG 4280
	1620	24.81" x 19.37" x 13.87" (63 x 49.2 x 35.2 cm)	21.37" x 16.31" x 12.56" (54.3 x 41.4 x 31.9 cm)	2.06" (5.2 cm)	10.50" (26.7 cm)	26.01 lbs. (11.8 kg)	24.47 lbs. (11.1 kg)	■ ■ ■ ■ *	150 lbs. (68 kg)	-40 / 210° F (-40 / 99° C)	IP67 • MIL C-4150J • DEF STAN 81-41/STANAG 4280
	1630	31.28" x 24.21" x 17.48" (79.4 x 61.5 x 44.4 cm)	27.70" x 20.98" x 15.50" (70.3 x 53.3 x 39.4 cm)	3.25" (8.3 cm)	12.14" (30.8 cm)	36 lbs. (16.33 kg)	31 lbs. (14.06 kg)	■ ■ ■ ■ *	350 lbs. (159 kg)	-40 / 210° F (-40 / 99° C)	IP67 • DEF STAN 81-41/STANAG 4280
	1640	27.20" x 27.50" x 16.30" (69.1 x 69.8 x 41.4 cm)	23.70" x 24.00" x 13.90" (60.2 x 60.9 x 35.3 cm)	2.00" (5.1 cm)	11.90" (30.2 cm)	38 lbs. (17.24 kg)	34 lbs. (15.42 kg)	■ ■ ■ ■ *	365 lbs. (166 kg)	-40 / 210° F (-40 / 99° C)	IP67 • DEF STAN 81-41/STANAG 4280
	1650	31.59" x 20.47" x 12.45" (80.2 x 52 x 31.7 cm)	28.57" x 17.52" x 10.65" (72.5 x 44.5 x 27 cm)	1.87" (4.7 cm)	8.62" (21.9 cm)	28 lbs. (12.7 kg)	24 lbs. (10.9 kg)	■ ■ ■ ■ *	181 lbs. (82.1 kg)	-40 / 210° F (-40 / 99° C)	IP67 • MIL C-4150J • DEF STAN 81-41/STANAG 4280 • ATA 300
	1660	31.59" x 22.99" x 19.48" (80.2 x 58.4 x 49.5 cm)	28.20" x 19.66" x 17.63" (71.6 x 49.9 x 44.8 cm)	3.50" (8.9 cm)	14.12" (35.9 cm)	42.16 lbs. (19.1 kg)	34.16 lbs. (15.5 kg)	■ ■ ■ ■ *	350 lbs. (159 kg)	-40 / 210° F (-40 / 99° C)	IP67 DEF STAN 81-41/STANAG 4280
	1690	33.36" x 28.44" x 18.23" (84.7 x 72.2 x 46.3 cm)	30.01" x 25.02" x 16.01" (76.2 x 63.5 x 40.6 cm)	2.86" (7.3 cm)	12.14" (30.8 cm)	43 lbs. (19.5 kg)	34 lbs. (15.42 kg)	■ ■ ■ ■ *	410 lbs. (186 kg)	-40 / 210° F (-40 / 99° C)	IP67 DEF STAN 81-41/STANAG 4280
	1730	37.05" x 27.20" x 14.37" (94.1 x 69.1 x 36.5 cm)	34.00" x 24.00" x 12.50" (86.3 x 60.9 x 31.7 cm)	2.50" (6.3 cm)	10.00" (25.4 cm)	38 lbs. (23.59 kg)	30 lbs. (19.96 kg)	■ ■ ■ ■ *	416 lbs. (189 kg)	-40 / 210° F (-40 / 99° C)	IP67
1780	44.90" x 25.32" x 16.50" (114 x 64.3 x 41.9 cm)	42.00" x 22.00" x 15.10" (106.6 x 55.9 x 38.3 cm)	7.58" (19.2 cm)	7.30" (18.5 cm)	49 lbs. (22.23 kg)	38.4 lbs. (17.42 kg)	■ ■ ■ ■ *	500 lbs. (226.8 kg)	-40 / 210° F (-40 / 99° C)	DEF STAN 81-41/STANAG 4280	
0340	20.50" x 20.50" x 19.25" (52 x 52 x 48.9 cm)	18.00" x 18.00" x 18.00" (45.7 x 45.7 x 45.7 cm)	4.00" (10.2 cm)	12.50" (31.7 cm)	29.76 lbs. (13.5 kg)	24 lbs. (10.89 kg)	■ ■ ■ ■ *	220 lbs. (100 kg)	-40 / 210° F (-40 / 99° C)	IP67 DEF STAN 81-41/STANAG 4280	
0350	22.50" x 22.43" x 21.25" (57.1 x 56.9 x 54 cm)	20.00" x 20.00" x 20.00" (50.8 x 50.8 x 50.8 cm)	5.00" (12.7 cm)	15.00" (38.1 cm)	32.01 lbs. (14.52 kg)	25.99 lbs. (11.79 kg)	■ ■ ■ ■	269 lbs. (122 kg)	-40 / 210° F (-40 / 99° C)	IP67 DEF STAN 81-41/STANAG 4280	

CASE	EXTERIOR	INTERIOR	LID DEPTH	BOTTOM DEPTH	WEIGHT WITH FOAM	WEIGHT WITHOUT FOAM	COLORS	BUOYANCY MAXIMUM	TEMPERATURE RANGE (MIN/MAX)	CERTIFICATES	
LARGE CASES	0370	26.50" x 26.50" x 25.25" (67.3 x 67.3 x 64.1 cm)	24.00" x 24.00" x 24.00" (60.9 x 60.9 x 60.9 cm)	4.50" (11.4 cm)	18.00" (45.7 cm)	41 lbs. (18.6 kg)	31.97 lbs. (14.5 kg)	■ ■ ■ *	465 lbs. (211 kg)	-40 / 210° F (-40 / 99° C)	IP67 DEF STAN 81-41/STANAG 4280
	0450	23.95" x 14.75" x 17.95" (60.8 x 37.5 x 45.6 cm)	20.56" x 10.97" x 12.65" (52.2 x 27.9 x 32.1 cm)	NA	NA	41.5 lbs. (18.82 kg) ^A	33 lbs. (14.97 kg) ^B	■			MIL-STD-810F
	0500	39.95" x 23.45" x 28.65" (101.4 X 59.5 X 72.7 cm)	34.95" X 18.45" X 25.25" (88.7 X 46.8 X 64.1 cm)	2.25" (5.7 cm)	23.00" (58.4 cm)	58.6 lbs. (26.58 kg)	50 lbs. (22.68 kg)	■	780 lbs. (354 kg)	-40 / 210° F (-40 / 99° C)	-
	0550	51.05" x 27.54" x 22.79" (129.6 x 69.9 x 57.9 cm)	47.57" X 24.07" X 17.68" (120.8 X 61.1 X 44.9 cm)	3.19" (8.1 cm)	14.49" (36.8 cm)	N/A	79.2 lbs. (35.92 kg)	■	820 lbs. (371.95 kg)	-40 / 210° F (-40 / 99° C)	-
LONG CASES	1700	38.12" x 16.00" x 6.12" (96.8 x 40.6 x 15.5 cm)	35.75" x 13.50" x 5.25" (90.8 x 34.3 x 13.3 cm)	1.75" (4.4 cm)	3.50" (8.9 cm)	16.98 lbs. (7.7 kg)	16.09 lbs. (7.3 kg)	■ ■ ■ *	137 lbs. (62.1 kg)	-40 / 210° F (-40 / 99° C)	IP67 · MIL C-4150J DEF STAN 81-41/STANAG 4280
	1720	44.37" x 16.00" x 6.12" (112.7 x 40.6 x 15.5 cm)	42.00" x 13.50" x 5.25" (106.6 x 34.3 x 13.3 cm)	1.75" (4.4 cm)	3.50" (8.9 cm)	18.96 lbs. (8.6 kg)	16.76 lbs. (7.6 kg)	■ ■ ■ *	161 lbs. (73 kg)	-40 / 210° F (-40 / 99° C)	DEF STAN 81-41/STANAG 4280
	1740	44.16" x 16.09" x 14.00" (112.1 x 40.9 x 35.5 cm)	40.98" x 12.92" x 12.13" (104 x 32.8 x 30.8 cm)	2.56" (6.5 cm)	9.57" (24.3 cm)	27 LBS. (12.25 KG)	22 LBS. (9.98 KG)	■ ■ ■ *	267 LBS. (121.11 KG)	-40 / 210° F (-40 / 99° C)	IP65
	1750	53.00" x 16.00" x 6.12" (134.6 x 40.6 x 15.5 cm)	50.50" x 13.50" x 5.25" (128.2 x 34.3 x 13.3 cm)	1.75" (4.4 cm)	3.50" (8.9 cm)	25.57 lbs. (11.6 kg)	23.59 lbs. (10.7 kg)	■ ■ ■ *	187 lbs. (85 kg)	-40 / 210° F (-40 / 99° C)	IP67 DEF STAN 81-41/STANAG 4280
	1770	57.42" x 18.48" x 11.23" (145.8 x 46.9 x 28.5 cm)	54.58" x 15.58" x 8.63" (138.6 x 39.6 x 21.9 cm)	1.88" (4.8 cm)	6.75" (17.1 cm)	36 lbs. (16.33 kg)	29 lbs. (13.15 kg)	■ ■ ■ *	280 lbs. (127.01 kg)	N/A	-
	1780	44.90" x 25.32" x 16.50" (114 x 64.3 x 41.9 cm)	42.00" x 22.00" x 15.10" (106.6 x 55.9 x 38.3 cm)	7.58" (19.2 cm)	7.30" (18.5 cm)	68.4 lbs. (31.03 kg)	53 lbs. (24.04 kg)	■ ■ ■ *	500 lbs. (226.8 kg)	-40 / 210° F (-40 / 99° C)	DEF STAN 81-41/STANAG 4280

*OD Green available upon request | (A) weight with drawers, (B) weight without drawers

All Pelican™ cases (except Micro Case Series™ cases, Memory Card cases, 1780 and 1780HL cases) come standard with Pick N Pluck™ foam.

Long Cases come with solid foam (Pick N Pluck™ is not available). To order Pelican™ Cases without foam add NF to the end of the catalog number.

Most Pelican™ cases have a 2 degree draft angle with a bottom radius of 0.66" +/- 0.020". Length and width are measured at the base of the case from the top of the radius.

Depth is measured at the center of the case and includes lid depth**

*OD Green available upon request.
** Refer to pelican.com and download CAD drawings for specifications on desired case.

OPTIONAL CONFIGURATIONS AND ACCESSORIES													
Case	Foam Set	Padded Dividers	Panel Frame	Lid Organizers	Nameplate	Other	Case	Foam Set	Padded Dividers	Panel Frame	Lid Organizers	Nameplate	Other
1010	1012	-	-	-	-	1011 Replacement Liner	1430	1431	• 1435 Office	1430 PF	1439	YES	• 1432 Strap Kit • 1438 Boat Bracket Kit
1020	1022	-	-	-	-	1021 Replacement Liner	1440	1441	• 1445 Utility w/Lid Org	-	1449 Office	YES	-
1030	1032	-	-	-	-	1031 Replacement Liner	1470	1471	-	1470 PF	-	YES	1472 Shoulder Strap
1040	1042	-	-	-	-	1041 Replacement Liner	1490	1491	-	1490 PF	1498	YES	• 1472 Shoulder Strap • 1499C Computer Insert. Bottom
1050	1052	-	-	-	-	1051 Replacement Liner	1495	1495	• 1481 HDF	-	1495ALI Attach/Computer Lid Insert	YES	• 1472 Shoulder Strap • 1495CBI Computer Insert. Bottom
1060	1062	-	-	-	-	1061 Replacement Liner	1560	1561	• 1562 Pick N Pluck™	-	1569	YES	-
1120	1121	-	1120 PF	-	-	-	1600	1611	• 1612 Pick N Pluck™	-	1609	YES	-
1150	1151	-	1150 PF	-	-	-	1610	1611	• 1612 Pick N Pluck™	-	1609	YES	-
1170	1171	-	-	-	-	-	1620	1621	• 1622 Pick N Pluck™	-	1609	YES	-
1200	1201	-	1200 PF	-	-	-	1630	1631	• 1632 Pick N Pluck™	-	1639	YES	-
1300	1301	-	1300 PF	-	-	-	1640	1641	• 1642 Pick N Pluck™	-	0379	YES	-
1400	1401	-	1400 PF	-	YES	-	Optional configurations and accessories do not apply to the i1010, 1015, i1015, 1460, 0550 cases.						
1450	1451	1455	1450 PF	-	YES	-							
1500	1501	1505	1500 PF	1508	YES	-							
1510	1511	1515	-	1519	YES	-							
1520	1521	1525	1520 PF	1509	YES	-							
1550	• 1551 • 1552 Pick N Pluck™	1555	1550 PF	-	YES	-							
1080	1081	-	-	-	-	-							
1090	1091	-	-	-	-	-							

Optional configurations and accessories do not apply to the i1010, 1015, i1015, 1460, 0550 cases.

THE PELICAN™ STORM CASE™



Lightweight and rugged, the Pelican™ Storm Case™ is the result of years of perfecting and testing in both the laboratory and the field. From the proprietary HPX™ plastic resin that is tough during low-temperature impact testing, to the patented Press & Pull latch that opens easily, every facet of these lightweight cases has been created to defend your vital gear.

The Pelican™ Storm Case™ has been designed to meet or exceed military testing requirements. Many are airline size appropriate, and all are internationally shippable.



A RESILIENT HPX™
High impact shell.



B PRESS & PULL LATCHES
Unique Press & Pull Latches open with

the push of a button, yet stay closed securely under impact or stress.

C RUGGED IN-LINE WHEELS

Ball bearing wheels provide low-friction, low drag rolling for easy movement of heavy loads. Available on select models.

D DOUBLE-LAYERED, SOFT-GRIP HANDLES

Tested and proven strong, these comfort grips withstand heavy loads.

E MOLDED IN HASPS

Unbreakable molded-in hasps, allow you to add standard size padlocks, offering another measure of security.

F ROUNDED DEFLECTIVE CORNERS

The corners of a Pelican™ Storm Case™ deflect and absorb impact, dispensing kinetic energy throughout the case to ensure contents remain safe drop after drop.

G VORTEX™ VALVE

Permanently attached Vortex™ valve automatically adjusts air pressure without letting in water, and won't unscrew from the case.

COLORS



BLACK



YELLOW



OD GREEN

SMALL CASES

Perfect for small gear and instruments but still have features found in larger cases: strong HPX™ resin construction, Vortex™ valve, and Press & Pull latches.



IM2050 STORM CASE



EXTERIOR DIMENSIONS	11.80" x 9.80" x 4.70" (30 x 24.9 x 11.9 cm)
INTERIOR DIMENSIONS	9.50" x 7.50" x 4.25" (24.1 x 19 x 10.8 cm)
LID/BOTTOM DEPTH	1.50" / 2.75" (3.8 cm / 7 cm)
WEIGHT	3 lbs. (1.36 kg) WITH FOAM 2.7 lbs. (1.22 kg) NO FOAM
COLORS	
AVAILABLE ACCESSORIES	3 pc. foam set, lid stay, padded shoulder strap, manual purge valve, padded dividers, base bezel kit
CERTIFICATES	MIL-STD-810F • FED-STD-101C ATA 300

IM2075 STORM CASE



Shown with optional panel frame

EXTERIOR DIMENSIONS	11.80" x 9.80" x 7.70" (30 x 24.9 x 19.6 cm)
INTERIOR DIMENSIONS	9.50" x 7.50" x 7.25" (24.1 x 19 x 18.4 cm)
LID/BOTTOM DEPTH	1.50" / 5.75" (3.8 cm / 14.6 cm)
WEIGHT	3.7 lbs. (1.68 kg) WITH FOAM 3.3 lbs. (1.5 kg) NO FOAM
COLORS	
AVAILABLE ACCESSORIES	4 pc. foam set, lid stay, padded shoulder strap, manual purge valve, padded dividers, base bezel kit
CERTIFICATES	MIL-STD-810F • FED-STD-101C ATA 300

IM2100 STORM CASE



EXTERIOR DIMENSIONS	14.20" x 11.40" x 6.50" (36.1 x 28.9 x 16.5 cm)
INTERIOR DIMENSIONS	13.00" x 9.20" x 6.00" (33 x 23.4 x 15.2 cm)
LID/BOTTOM DEPTH	2.00" / 4.00" (5.1 cm / 10.2 cm)
WEIGHT	4.9 lbs. (2.22 kg) WITH FOAM 4.2 lbs. (1.91 kg) NO FOAM
COLORS	
AVAILABLE ACCESSORIES	4 pc. foam set, lid stay, padded shoulder strap, manual purge valve, padded dividers, base bezel kit
CERTIFICATES	MIL-STD-810F • FED-STD-101C ATA 300

Case contents not included

MEDIUM CASES

From firefighters, EMTs, and law enforcement to industrial engineers and photographers, there's a Pelican™ Storm Case™ for every professional. Built strong with multiple interior options to protect the most sensitive gear.

EXTERIOR DIMENSIONS
INTERIOR DIMENSIONS
LID/BOTTOM DEPTH
WEIGHT
COLORS
AVAILABLE ACCESSORIES
CERTIFICATES

IM2200 STORM CASE



16.20" x 12.70" x 6.60" (41.1 x 32.2 x 16.8 cm)
15.00" x 10.50" x 6.00" (38.1 x 26.7 x 15.2 cm)
2.00" / 4.00" (5.1 cm / 10.2 cm)
6.1 lbs. (2.77 kg) WITH FOAM 4.9 lbs. (2.22 kg) NO FOAM
■ ■ ■
4 pc. foam set, lid stay, padded shoulder strap, manual purge valve, padded dividers, base bezel kit, lid bezel kit
MIL-STD-810F • FED-STD-101C ATA 300

EXTERIOR DIMENSIONS
INTERIOR DIMENSIONS
LID/BOTTOM DEPTH
WEIGHT
COLORS
AVAILABLE ACCESSORIES
CERTIFICATES

IM2300 STORM CASE



18.20" x 13.40" x 6.70" (46.2 x 34 x 17 cm)
17.00" x 11.70" x 6.20" (43.2 x 29.7 x 15.7 cm)
2.00" / 4.20" (5.1 cm / 10.7 cm)
7.1 lbs. (3.77 kg) WITH FOAM 5.9 lbs. (2.68 kg) NO FOAM
■ ■ ■
4 pc. foam set, lid stay, padded shoulder strap, purge valve, padded dividers, base bezel kit, lid bezel kit, lid organizer, photography pallet
MIL-STD-810F • FED-STD-101C ATA 300

EXTERIOR DIMENSIONS
INTERIOR DIMENSIONS
LID/BOTTOM DEPTH
WEIGHT
COLORS
AVAILABLE ACCESSORIES
CERTIFICATES

IM2306 STORM CASE



18.20" x 8.40" x 6.70" (46.2 x 21.3 x 17 cm)
17.00" x 6.30" x 6.20" (43.2 x 16 x 15.7 cm)
2.00" / 4.20" (5.1 cm / 10.7 cm)
4.7 lbs. (2.13 kg) WITH FOAM 4.3 lbs. (1.95 kg) NO FOAM
■ ■
4 pc. foam set, lid stay, padded shoulder strap, manual purge valve, padded dividers, base bezel kit, lid bezel kit
MIL-STD-810F • FED-STD-101C ATA 300

IM2370 STORM LAPTOP CASE



20.00" x 14.70" x 5.80" (50.8 x 37.3 x 14.7 cm)
18.20" x 12.10" x 5.20" (46.2 x 30.7 x 13.2 cm)
1.70" / 3.50" (4.3 cm / 8.9 cm)
7.2 lbs. (3.27 kg) WITH FOAM 5.7 lbs. (2.59 kg) NO FOAM
■ ■
4 pc. foam set, padded shoulder strap, manual purge valve, padded dividers, computer tray, utility organizer
MIL-STD-810F • FED-STD-101C ATA 300

IM2400 STORM CASE



19.20" x 15.20" x 7.30" (48.7 x 38.6 x 18.5 cm)
18.00" x 13.00" x 6.70" (45.7 x 33 x 17 cm)
2.00" / 4.70" (5.1 cm / 11.9 cm)
7.8 lbs. (3.54 kg) WITH FOAM 6.5 lbs. (2.95 kg) NO FOAM
■ ■ ■
4 pc. foam set, lid stay, padded shoulder strap, purge valve, padded dividers, base bezel kit, lid bezel kit, lid organizer, photography pallet
MIL-STD-810F • FED-STD-101C ATA 300

IM2450 STORM CASE



19.20" x 15.20" x 9.00" (48.7 x 38.6 x 22.9 cm)
18.00" x 13.00" x 8.40" (45.7 x 33 x 21.3 cm)
2.00" / 6.40" (5.1 cm / 16.2 cm)
8.9 lbs. (4.04 kg) WITH FOAM 7.4 lbs. (3.36 kg) NO FOAM
■ ■
5 pc. foam set, lid stay, padded shoulder strap, manual purge valve, padded dividers, base bezel kit, lid bezel kit, photography pallet
MIL-STD-810F • FED-STD-101C ATA 300

EXTERIOR DIMENSIONS
INTERIOR DIMENSIONS
LID/BOTTOM DEPTH
WEIGHT
COLORS
AVAILABLE ACCESSORIES
CERTIFICATES

IM2500 STORM CARRY ON CASE



21.70" x 14.10" x 8.90" (55.1 x 35.8 x 22.6 cm)
20.50" x 11.50" x 7.20" (52 x 29.2 x 18.3 cm)
2.00" / 5.20" (5.1 cm / 13.2 cm)
13.7 lbs. (6.21 kg) WITH FOAM 11.1 lbs. (5.03 kg) NO FOAM
■ ■ ■
5 pc. foam set, lid stay, padded shoulder strap, manual purge valve, padded dividers, base bezel kit, lid bezel kit, utility organizer
MIL-STD-810F • FED-STD-101C ATA 300

EXTERIOR DIMENSIONS
INTERIOR DIMENSIONS
LID/BOTTOM DEPTH
WEIGHT
COLORS
AVAILABLE ACCESSORIES
CERTIFICATES

IM2600 STORM CASE



21.20" x 16.00" x 8.30" (53.8 x 40.6 x 21.1 cm)
20.00" x 14.00" x 7.70" (50.8 x 35.5 x 19.6 cm)
2.00" / 5.70" (5.1 cm / 14.5 cm)
11.6 lbs. (5.26 kg) WITH FOAM 8.5 lbs. (3.86 kg) NO FOAM
■ ■ ■
5 pc. foam set, lid stay, padded shoulder strap, purge valve, padded dividers, base bezel kit, lid bezel kit, lid organizer, photography pallet
MIL-STD-810F • FED-STD-101C ATA 300

EXTERIOR DIMENSIONS
INTERIOR DIMENSIONS
LID/BOTTOM DEPTH
WEIGHT
COLORS
AVAILABLE ACCESSORIES
CERTIFICATES

IM2620 STORM CASE



21.20" x 16.00" x 10.60" (53.8 x 40.6 x 26.9 cm)
20.00" x 14.00" x 10.00" (50.8 x 35.5 x 25.4 cm)
2.00" / 8.00" (5.1 cm / 20.3 cm)
14.5 lbs. (6.58 kg) WITH FOAM 12.5 lbs. (5.67 kg) NO FOAM
■ ■
6 pc. foam set, lid stay, padded shoulder strap, purge valve, padded dividers, base bezel kit, lid bezel kit, lid organizer, photography pallet
MIL-STD-810F • FED-STD-101C ATA 300

LARGE CASES

In the lab or in the field, the large Pelican™ Storm Case™ with HPX™ resin construction protect and store valuable and sensitive samples and testing instruments from the elements. Pick N Pluck™ foam adds extra protection from shock during transport.

EXTERIOR DIMENSIONS
INTERIOR DIMENSIONS
LID/BOTTOM DEPTH
WEIGHT
COLORS
AVAILABLE ACCESSORIES
CERTIFICATES



IM2700 STORM CASE
24.60" x 19.70" x 8.60" (62.5 x 50 x 21.8 cm)
22.00" x 17.00" x 8.00" (55.9 x 43.2 x 20.3 cm)
2.00" / 6.00" (5.1 cm / 15.2 cm)
14.4 lbs. (6.53 kg) WITH FOAM 11.1 lbs. (5.03 kg) NO FOAM
■ ■ ■
5 pc. foam set, lid stay, padded shoulder strap, manual purge valve, padded dividers, base bezel kit, lid bezel kit, utility organizer
MIL-STD-810F • FED-STD-101C ATA 300

Case contents not included

IM2720 STORM CASE



24.60" x 19.70" x 11.70" (62.5 x 50 x 29.7 cm)
22.00" x 17.00" x 10.00" (55.9 x 43.2 x 25.4 cm)
2.00" / 8.00" (5.1 cm / 20.3 cm)
14.4 lbs. (6.53 kg) WITH FOAM 11.1 lbs. (5.03 kg) NO FOAM
■ ■ ■
5 pc. foam set, lid stay, manual purge valve, padded dividers, base bezel kit, lid bezel kit, utility organizer
MIL-STD-810F • FED-STD-101C ATA 300

EXTERIOR DIMENSIONS
INTERIOR DIMENSIONS
LID/BOTTOM DEPTH
WEIGHT
COLORS
AVAILABLE ACCESSORIES
CERTIFICATES

IM2950 STORM CASE



31.30" x 20.40" x 12.20" (79.5 x 51.8 x 31 cm)
29.00" x 18.00" x 10.50" (73.6 x 45.7 x 26.7 cm)
2.00" / 8.50" (5.1 cm / 21.6 cm)
28.7 lbs. (13.02 kg) WITH FOAM 20.8 lbs. (9.43 kg) NO FOAM
■ ■ ■
6 pc. foam set, lid stay, manual purge valve, padded dividers, base bezel kit, lid bezel kit, utility organizer
MIL-STD-810F • FED-STD-101C ATA 300

EXTERIOR DIMENSIONS
INTERIOR DIMENSIONS
LID/BOTTOM DEPTH
WEIGHT
COLORS
AVAILABLE ACCESSORIES
CERTIFICATES

IM2750 STORM CASE



24.60" x 19.70" x 14.40" (62.5 x 50 x 36.6 cm)
22.00" x 17.00" x 12.70" (55.9 x 43.2 x 32.2 cm)
2.00" / 10.70" (5.1 cm / 27.2 cm)
23.4 lbs. (10.61 kg) WITH FOAM 18.5 lbs. (8.39 kg) NO FOAM
■ ■ ■
7 pc. foam set, lid stay, manual purge valve, padded dividers, base bezel kit, lid bezel kit, utility organizer
MIL-STD-810F • FED-STD-101C ATA 300

EXTERIOR DIMENSIONS
INTERIOR DIMENSIONS
LID/BOTTOM DEPTH
WEIGHT
COLORS
AVAILABLE ACCESSORIES
CERTIFICATES

IM2975 STORM TRANSPORT CASE



31.30" x 20.40" x 15.50" (79.5 x 51.8 x 39.4 cm)
29.00" x 18.00" x 13.80" (73.6 x 45.7 x 35 cm)
2.00" / 11.80" (5.1 cm / 30 cm)
29.5 lbs. (13.38 kg) WITH FOAM 22.8 lbs. (10.34 kg) NO FOAM
■ ■ ■
8 pc. foam set, lid stay, manual purge valve, padded dividers, base bezel kit, lid bezel kit, utility organizer
MIL-STD-810F • FED-STD-101C ATA 300

EXTERIOR DIMENSIONS
INTERIOR DIMENSIONS
LID/BOTTOM DEPTH
WEIGHT
COLORS
AVAILABLE ACCESSORIES
CERTIFICATES

IM2875 STORM CASE



24.90" x 23.70" x 13.10" (63.2 x 60.2 x 33.3 cm)
22.50" x 21.10" x 11.40" (57.1 x 53.6 x 28.9 cm)
2.00" / 9.40" (5.1 cm / 23.9 cm)
24.6 lbs. (11.16 kg) WITH FOAM 20.1 lbs. (9.12 kg) NO FOAM
■ ■ ■
7 pc. foam set, lid stay, manual purge valve, padded dividers, base bezel kit, lid bezel kit, utility organizer
MIL-STD-810F • FED-STD-101C ATA 300

EXTERIOR DIMENSIONS
INTERIOR DIMENSIONS
LID/BOTTOM DEPTH
WEIGHT
COLORS
AVAILABLE ACCESSORIES
CERTIFICATES

IM3075 STORM TRANSPORT CASE



33.30" x 24.40" x 19.30" (84.5 x 62 x 49 cm)
29.80" x 20.80" x 17.80" (75.7 x 52.8 x 45.2 cm)
4.00" / 13.75" (10.2 cm / 34.9 cm)
45 lbs. (20.41 kg) WITH FOAM 31.5 lbs. (14.29 kg) NO FOAM
■ ■ ■
7 pc. foam set, lid stay, manual purge valve, padded dividers, base bezel kit, lid bezel kit, utility organizer
MIL-STD-810F • FED-STD-101C ATA 300

EXTERIOR DIMENSIONS
INTERIOR DIMENSIONS
LID/BOTTOM DEPTH
WEIGHT
COLORS
AVAILABLE ACCESSORIES
CERTIFICATES

Case contents not included

LONG CASES



Popular with military personnel and outdoor sports enthusiasts. Equipped with sturdy in-line wheels, double layered soft grip handles, and powerful hinges. 4 sizes available.

IM3100 STORM CASE



39.80" x 16.50" x 6.70"
(101.1 x 41.9 x 17 cm)
36.50" x 14.00" x 6.00"
(92.7 x 35.5 x 15.2 cm)
2.00" / 4.00"
(5.1 cm / 10.2 cm)
19.8 lbs. (8.98 kg) WITH FOAM
15.2 lbs. (6.89 kg) NO FOAM



4 pc. foam set, lid stay, manual purge valve, padded shoulder strap

MIL-STD-810F • FED-STD-101C
ATA 300

EXTERIOR DIMENSIONS

INTERIOR DIMENSIONS

LID/BOTTOM DEPTH

WEIGHT

COLORS

AVAILABLE ACCESSORIES

CERTIFICATES

IM3300 STORM CASE



53.80" x 16.50" x 6.70"
(136.6 x 41.9 x 17 cm)
50.50" x 14.00" x 6.00"
(128.2 x 35.5 x 15.2 cm)
2.00" / 4.00"
(5.1 cm / 10.2 cm)
23 lbs. (10.43 kg) WITH FOAM
19.1 lbs. (8.66 kg) NO FOAM



4 pc. foam set, lid stay, manual purge valve, padded shoulder strap

MIL-STD-810F • FED-STD-101C
ATA 300

EXTERIOR DIMENSIONS

INTERIOR DIMENSIONS

LID/BOTTOM DEPTH

WEIGHT

COLORS

AVAILABLE ACCESSORIES

CERTIFICATES

IM3200 STORM CASE



47.20" x 16.50" x 6.70"
(119.8 x 41.9 x 17 cm)
44.00" x 14.00" x 6.00"
(111.7 x 35.5 x 15.2 cm)
2.00" / 4.00"
(5.1 cm / 10.2 cm)
21.1 lbs. (9.57 kg) WITH FOAM
17.7 lbs. (8.03 kg) NO FOAM



4 pc. foam set, lid stay, manual purge valve, padded shoulder strap

MIL-STD-810F • FED-STD-101C
ATA 300

EXTERIOR DIMENSIONS

INTERIOR DIMENSIONS

LID/BOTTOM DEPTH

WEIGHT

COLORS

AVAILABLE ACCESSORIES

CERTIFICATES

IM3220 STORM CASE



47.20" x 16.50" x 9.20"
(119.8 x 41.9 x 23.4 cm)
44.00" x 14.00" x 8.50"
(111.7 x 35.5 x 21.6 cm)
2.00" / 6.50"
(5.1 cm / 16.5 cm)
24.8 lbs. (11.25 kg) WITH FOAM
20.4 lbs. (9.25 kg) NO FOAM



4 pc. foam set, lid stay, manual purge valve, padded shoulder strap

MIL-STD-810F • FED-STD-101C
ATA 300

EXTERIOR DIMENSIONS

INTERIOR DIMENSIONS

LID/BOTTOM DEPTH

WEIGHT

COLORS

AVAILABLE ACCESSORIES

CERTIFICATES

Case contents not included





PELICAN™ STORM CASE™ ORGANIZATION SOLUTIONS

LID ORGANIZERS

Customize your case with a lightweight lid organizer, utility organizer or photo pallet kit to keep your gear organized and protected inside. The organizers fit perfectly inside the lid of the case and are covered with a water-resistant, PVC-coated, high denier nylon fabric for strength and protection from the elements. Installs with Velcro® strips (included).

PADDED DIVIDERS

Main dividers that span the length of the case are complemented by varying sizes of subdividers. Velcro® edges make it easy to reposition these dividers into the spaces you need. See individual accessory configurations product listings for availability.



LID ORGANIZERS OPTIONS

CASE	LID ORGANIZERS OPTIONS		
	PHOTOGRAPHER'S ORGANIZER	LID ORGANIZER	UTILITY ORGANIZER
iM2300	iM2300-PHOTOPALLET	iM2300-LIDORG	
iM2370			iM2370-UTILITYORG
iM2400	iM24XX-PHOTOPALLET	iM24XX-LIDORG	
iM2450	iM24XX-PHOTOPALLET	iM24XX-LIDORG	
iM2500			iM2500-UTILITYORG
iM2600	iM26XX-PHOTOPALLET	iM26XX-LIDORG	iM26XX-UTILITYORG
iM2620	iM26XX-PHOTOPALLET	iM26XX-LIDORG	iM26XX-UTILITYORG
iM2700			iM27XX-UTILITYORG
iM2720			iM27XX-UTILITYORG
iM2750			iM27XX-UTILITYORG
iM2875			iM2875-UTILITYORG
iM2950			iM29XX-UTILITYORG
iM2975			iM29XX-UTILITYORG
iM3075			iM30XX-UTILITYORG
	Present an array of compartments including an assortment of elastic strapping and mesh nylon zipper pockets to house, protect, and organize your gear.	Are styled with deep expandable folder pockets and sleeves for various office attaché style components.	Offer various folder pockets, sleeves, and include a vast array of mesh nylon zipper pockets to house, protect, and organize gear.

Lid Organizers are installed with Velcro® (included)

PADDED DIVIDER OPTIONS

CASE	LAYERS	CASE WITH DIVIDERS*	DIVIDER SET ONLY
iM2050	1	iM2050-X0002	iM2050-DIV
iM2075	1	iM2075-X0002	iM2075-DIV
iM2100	1	iM2100-X0002	iM2100-DIV
iM2200	1	iM2200-X0002	iM2200-DIV
iM2300	1	iM2300-X0002	iM2300-DIV
iM2306	1	iM2306-X0002	iM2306-DIV
iM2370	1	iM2370-X0002	iM2370-DIV
iM2400	1	iM2400-X0002	iM2400-DIV
iM2450	1	iM2450-X0002	iM2450-DIV
iM2500	1	iM2500-X0002	iM2500-DIV
iM2600	1	iM2600-X0002	iM2600-DIV
iM2620	1	iM2620-X0002	iM2620-DIV
iM2700	1	iM2700-X0002	iM2700-DIV
iM2720	1	iM2720-X0002	iM2720-DIV
iM2750	2	iM2750-X0002	iM2750-DIV
iM2875	1	iM2875-X0002	iM2875-DIV
iM2950	1	iM2950-X0002	iM2950-DIV
iM2975	2	iM2975-X0002	iM2975-DIV
iM3075	2	iM3075-X0002	iM3075-DIV

*X in part number denotes color choice

iM2050-20002 = iM2050, Yellow with Padded Dividers

CASE COLOR KEY

0-BLACK 2-YELLOW 3-OD GREEN

CASE	EXTERIOR	INTERIOR	LID DEPTH	CASE DEPTH	WEIGHT WITH FOAM	WEIGHT WITHOUT FOAM	COLORS	BUOYANCY MAXIMUM	TEMPERATURE	CERTIFICATES
iM2050	11.80" x 9.80" x 4.70" (30 x 24.9 x 11.9 cm)	9.50" x 7.50" x 4.25" (24.1 x 19 x 10.8 cm)	1.50" (3.8 cm)	2.75" (7 cm)	3 lbs. (1.36 kg)	2.7 lbs. (1.22 kg)		16.68 lbs. (7.57 kg)	-20 / 140° F (-29 / 60° C)	MIL-STD-810F • FED-STD-101C • ATA 300
iM2075	11.80" x 9.80" x 7.70" (30 x 24.9 x 19.6 cm)	9.50" x 7.50" x 7.25" (24.1 x 19 x 18.4 cm)	1.50" (3.8 cm)	5.75" (14.6 cm)	3.7 lbs. (1.68 kg)	3.3 lbs. (1.5 kg)		28.45 lbs. (12.9 kg)	-20 / 140° F (-29 / 60° C)	MIL-STD-810F • FED-STD-101C • ATA 300
iM2100	14.20" x 11.40" x 6.50" (36.1 x 28.9 x 16.5 cm)	13.00" x 9.20" x 6.00" (33 x 23.4 x 15.2 cm)	2.00" (5.1 cm)	4.00" (10.2 cm)	4.9 lbs. (2.22 kg)	4.2 lbs. (1.91 kg)		33.82 lbs. (15.34 kg)	-20 / 140° F (-29 / 60° C)	MIL-STD-810F • FED-STD-101C • ATA 300
iM2200	16.20" x 12.70" x 6.60" (41.1 x 32.2 x 16.8 cm)	15.00" x 10.50" x 6.00" (38.1 x 26.7 x 15.2 cm)	2.00" (5.1 cm)	4.00" (10.2 cm)	6.1 lbs. (2.77 kg)	4.9 lbs. (2.22 kg)		44.16 lbs. (20.03 kg)	-20 / 140° F (-29 / 60° C)	MIL-STD-810F • FED-STD-101C • ATA 300
iM2300	18.20" x 13.40" x 6.70" (46.2 x 34 x 17 cm)	17.00" x 11.70" x 6.20" (43.2 x 29.7 x 15.7 cm)	2.00" (5.1 cm)	4.20" (10.7 cm)	7.1 lbs. (3.22 kg)	5.9 lbs. (2.68 kg)		53.24 lbs. (24.15 kg)	-20 / 140° F (-29 / 60° C)	MIL-STD-810F • FED-STD-101C • ATA 300
iM2306	18.20" x 8.40" x 6.70" (46.2 x 21.3 x 17 cm)	17.00" x 6.30" x 6.20" (43.2 x 16 x 15.7 cm)	2.00" (5.1 cm)	4.20" (10.7 cm)	4.7 lbs. (2.13 kg)	4.3 lbs. (1.95 kg)		32.71 lbs. (14.84 kg)	-20 / 140° F (-29 / 60° C)	MIL-STD-810F • FED-STD-101C • ATA 300
iM2370	20.00" x 14.70" x 5.80" (50.8 x 37.3 x 14.7 cm)	18.20" x 12.10" x 5.20" (46.2 x 30.7 x 13.2 cm)	1.70" (4.3 cm)	3.50" (8.9 cm)	7.2 lbs. (3.27 kg)	5.7 lbs. (2.59 kg)		56.61 lbs. (25.68 kg)	-20 / 140° F (-29 / 60° C)	MIL-STD-810F • FED-STD-101C • ATA 300
iM2400	19.20" x 15.20" x 7.30" (48.7 x 38.6 x 18.5 cm)	18.00" x 13.00" x 6.70" (45.7 x 33 x 17 cm)	2.00" (5.1 cm)	4.70" (11.9 cm)	7.8 lbs. (3.54 kg)	6.5 lbs. (2.95 kg)		70.47 lbs. (31.96 kg)	-20 / 140° F (-29 / 60° C)	MIL-STD-810F • FED-STD-101C • ATA 300
iM2450	19.20" x 15.20" x 9.00" (48.7 x 38.6 x 22.9 cm)	18.00" x 13.00" x 8.40" (45.7 x 33 x 21.3 cm)	2.00" (5.1 cm)	7.00" (17.8 cm)	8.9 lbs. (4.04 kg)	7.4 lbs. (3.36 kg)		63.62 lbs. (28.86 kg)	-20 / 140° F (-29 / 60° C)	MIL-STD-810F • FED-STD-101C • ATA 300
iM2500	21.70" x 14.10" x 8.90" (55.1 x 35.8 x 22.6 cm)	20.50" x 11.50" x 7.20" (52 x 29.2 x 18.3 cm)	2.00" (5.1 cm)	5.20" (13.2 cm)	13.7 lbs. (6.21 kg)	11.1 lbs. (5.03 kg)		87.39 lbs. (39.64 kg)	-20 / 140° F (-29 / 60° C)	MIL-STD-810F • FED-STD-101C • ATA 300
iM2600	21.20" x 16.00" x 8.30" (53.8 x 40.6 x 21.1 cm)	20.00" x 14.00" x 7.70" (50.8 x 35.5 x 19.6 cm)	2.00" (5.1 cm)	5.70" (14.5 cm)	11.6 lbs. (5.26 kg)	8.5 lbs. (3.86 kg)		93.22 lbs. (42.28 kg)	-20 / 140° F (-29 / 60° C)	MIL-STD-810F • FED-STD-101C • ATA 300
iM2620	21.20" x 16.00" x 10.60" (53.8 x 40.6 x 26.9 cm)	20.00" x 14.00" x 10.00" (50.8 x 35.5 x 25.4 cm)	2.00" (5.1 cm)	8.00" (20.3 cm)	14.5 lbs. (6.58 kg)	12.5 lbs. (5.67 kg)		129.91 lbs. (58.93 kg)	-20 / 140° F (-29 / 60° C)	MIL-STD-810F • FED-STD-101C • ATA 300
iM2700	24.60" x 19.70" x 8.60" (62.5 x 50 x 21.8 cm)	22.00" x 17.00" x 8.00" (55.9 x 43.2 x 20.3 cm)	2.00" (5.1 cm)	6.00" (15.2 cm)	14.4 lbs. (6.53 kg)	11.1 lbs. (5.03 kg)		139.48 lbs. (63.27 kg)	-20 / 140° F (-29 / 60° C)	MIL-STD-810F • FED-STD-101C • ATA 300
iM2720	24.60" x 19.70" x 11.70" (62.5 x 50 x 29.7 cm)	22.00" x 17.00" x 10.00" (55.9 x 43.2 x 25.4 cm)	2.00" (5.1 cm)	8.00" (20.3 cm)	22 lbs. (9.98 kg)	16.8 lbs. (7.62 kg)		188.06 lbs. (85.3 kg)	-20 / 140° F (-29 / 60° C)	MIL-STD-810F • FED-STD-101C • ATA 300
iM2750	24.60" x 19.70" x 14.40" (62.5 x 50 x 36.6 cm)	22.00" x 17.00" x 12.70" (55.9 x 43.2 x 32.2 cm)	2.00" (5.1 cm)	10.70" (27.2 cm)	23.4 lbs. (10.61 kg)	18.5 lbs. (8.39 kg)		233.63 lbs. (105.97 kg)	-20 / 140° F (-29 / 60° C)	MIL-STD-810F • FED-STD-101C • ATA 300
iM2875	24.90" x 23.70" x 13.10" (63.2 x 60.2 x 33.3 cm)	22.50" x 21.10" x 11.40" (57.1 x 53.6 x 28.9 cm)	2.00" (5.1 cm)	9.40" (23.9 cm)	24.6 lbs. (11.16 kg)	20.1 lbs. (9.12 kg)		259.21 lbs. (117.58 kg)	-20 / 140° F (-29 / 60° C)	MIL-STD-810F • FED-STD-101C • ATA 300
iM2950	31.30" x 20.40" x 12.20" (79.5 x 51.8 x 31 cm)	29.00" x 18.00" x 10.50" (73.6 x 45.7 x 26.7 cm)	2.00" (5.1 cm)	8.50" (21.6 cm)	28.7 lbs. (13.02 kg)	20.8 lbs. (9.43 kg)		260.65 lbs. (118.23 kg)	-20 / 140° F (-29 / 60° C)	MIL-STD-810F • FED-STD-101C • ATA 300
iM2975	31.30" x 20.40" x 15.50" (79.5 x 51.8 x 39.4 cm)	29.00" x 18.00" x 13.80" (73.6 x 45.7 x 35 cm)	2.00" (5.1 cm)	11.80" (30 cm)	29.5 lbs. (13.38 kg)	22.8 lbs. (10.34 kg)		332.77 lbs. (150.94 kg)	-20 / 140° F (-29 / 60° C)	MIL-STD-810F • FED-STD-101C • ATA 300
iM3075	33.30" x 24.40" x 19.30" (84.5 x 62 x 49 cm)	29.80" x 20.80" x 17.80" (75.7 x 52.8 x 45.2 cm)	4.00" (10.2 cm)	13.75" (34.9 cm)	45 lbs. (20.41 kg)	31.5 lbs. (14.29 kg)		530.89 lbs. (240.81 kg)	-20 / 140° F (-29 / 60° C)	MIL-STD-810F • FED-STD-101C • ATA 300
iM3100	39.80" x 16.50" x 6.70" (101.1 x 41.9 x 17 cm)	36.50" x 14.00" x 6.00" (92.7 x 35.5 x 15.2 cm)	2.00" (5.1 cm)	4.00" (10.2 cm)	19.8 lbs. (8.98 kg)	15.2 lbs. (6.89 kg)		142.58 lbs. (64.67 kg)	-20 / 140° F (-29 / 60° C)	MIL-STD-810F • FED-STD-101C • ATA 300
iM3200	47.20" x 16.50" x 6.70" (119.8 x 41.9 x 17 cm)	44.00" x 14.00" x 6.00" (111.7 x 35.5 x 15.2 cm)	2.00" (5.1 cm)	4.00" (10.2 cm)	21.1 lbs. (9.57 kg)	17.7 lbs. (8.03 kg)		170.82 lbs. (77.48 kg)	-20 / 140° F (-29 / 60° C)	MIL-STD-810F • FED-STD-101C • ATA 300
iM3220	47.20" x 16.50" x 9.20" (119.8 x 41.9 x 23.4 cm)	44.00" x 14.00" x 8.50" (111.7 x 35.5 x 21.6 cm)	2.00" (5.1 cm)	6.50" (16.5 cm)	24.8 lbs. (11.25 kg)	20.4 lbs. (9.25 kg)		238.47 lbs. (108.17 kg)	-20 / 140° F (-29 / 60° C)	MIL-STD-810F • FED-STD-101C • ATA 300
iM3300	53.80" x 16.50" x 6.70" (136.6 x 41.9 x 17 cm)	50.50" x 14.00" x 6.00" (128.2 x 35.5 x 15.2 cm)	2.00" (5.1 cm)	4.00" (10.2 cm)	23 lbs. (10.43 kg)	19.1 lbs. (8.66 kg)		195.89 lbs. (88.85 kg)	-20 / 140° F (-29 / 60° C)	MIL-STD-810F • FED-STD-101C • ATA 300

PELICAN STORM CASE ACCESSORIES								
CASE	BASE BEZEL KIT	LID BEZEL KIT	LID STAY	MANUAL PURGE VALVE	PADDED SHOULDER STRAP	REPLACEMENT FOAM	COMPUTER TRAY	REMOVABLE PADDED SHOULDER STRAP
iM2050	iM20XX-BEZEL		iM-LIDSTAY	iM-VALVE-M-B	iM-STRAP-S-VER2	iM2050-FOAM		
iM2075	iM20XX-BEZEL		iM-LIDSTAY	iM-VALVE-M-B	iM-STRAP-S-VER2	iM2075-FOAM		
iM2100	iM2100-BEZEL		iM-LIDSTAY	iM-VALVE-M-B	iM-STRAP-S-VER2	iM2100-FOAM		
iM2200	iM2200-BEZEL	iM2200-BEZEL-LID	iM-LIDSTAY	iM-VALVE-M-B	iM-STRAP-S-VER2	iM2200-FOAM		
iM2300	iM2300-BEZEL	iM2300-BEZEL-LID	iM-LIDSTAY	iM-VALVE-M-B	iM-STRAP-S-VER2	iM2300-FOAM		
iM2306	iM2306-BEZEL	iM2306-BEZEL-LID	iM-LIDSTAY	iM-VALVE-M-B	iM-STRAP-S-VER2	iM2306-FOAM		
iM2370			iM-LIDSTAY	iM-VALVE-M-B		iM2370-FOAM	iM2370-COMPTRAY	iM2370-STRAP-S
iM2400	iM24XX-BEZEL	iM24XX-BEZEL-LID	iM-LIDSTAY	iM-VALVE-M-B	iM-STRAP-S-VER2	iM2400-FOAM		
iM2450	iM24XX-BEZEL	iM24XX-BEZEL-LID	iM-LIDSTAY	iM-VALVE-M-B	iM-STRAP-S-VER2	iM2450-FOAM		
iM2500	iM2500-BEZEL	iM2500-BEZEL-LID	iM-LIDSTAY	iM-VALVE-M-B	iM-STRAP-S-VER2	iM2500-FOAM		
iM2600	iM26XX-BEZEL	iM26XX-BEZEL-LID	iM-LIDSTAY	iM-VALVE-M-B	iM-STRAP-S-VER2	iM2600-FOAM		
iM2620	iM26XX-BEZEL	iM26XX-BEZEL-LID	iM-LIDSTAY	iM-VALVE-M-B	iM-STRAP-S-VER2	iM2620-FOAM		
iM2700	iM27XX-BEZEL	iM27XX-BEZEL-LID	iM-LIDSTAY	iM-VALVE-M-B	iM-STRAP-S-VER2	iM2700-FOAM		
iM2720	iM27XX-BEZEL	iM27XX-BEZEL-LID	iM-LIDSTAY	iM-VALVE-M-B	iM-STRAP-S-VER2	iM2720-FOAM		
iM2750	iM27XX-BEZEL	iM27XX-BEZEL-LID	iM-LIDSTAY	iM-VALVE-M-B	iM-STRAP-S-VER2	iM2750-FOAM		
iM2875	iM2875-BEZEL	iM2875-BEZEL-LID	iM-LIDSTAY	iM-VALVE-M-B	iM-STRAP-S-VER2	iM2875-FOAM		
iM2950	iM29XX-BEZEL	iM29XX-BEZEL-LID	iM-LIDSTAY	iM-VALVE-M-B	iM-STRAP-S-VER2	iM2950-FOAM		
iM2975	iM29XX-BEZEL	iM29XX-BEZEL-LID	iM-LIDSTAY	iM-VALVE-M-B	iM-STRAP-S-VER2	iM2975-FOAM		
iM3075	iM30XX-BEZEL	iM30XX-BEZEL-LID	iM-LIDSTAY	iM-VALVE-M-B	iM-STRAP-S-VER2	iM3075-FOAM		
iM3100			iM-LIDSTAY	iM-VALVE-M-B	iM-STRAP-S-VER2	iM3100-FOAM		
iM3200			iM-LIDSTAY	iM-VALVE-M-B	iM-STRAP-S-VER2	iM3200-FOAM		
iM3220			iM-LIDSTAY	iM-VALVE-M-B	iM-STRAP-S-VER2	iM3220-FOAM		
iM3300			iM-LIDSTAY	iM-VALVE-M-B	iM-STRAP-S-VER2	iM3300-FOAM		

SELECT SET: MORE THAN A BOX



SPECIALTY PRODUCTS



SINGLE LID CASES



**BLACK BOX
RACKMOUNT CASES**



472 CASES

High density custom foam inserts protect your firearms during transport and harsh outdoor conditions. Multitude of cases with pre-configured foam inserts designed to carry a variety of military and law enforcement weapon systems.

SINGLE LID CASES

Transport and protect your equipment in our Single Lid Cases. These cases are lightweight, shockproof, watertight, dustproof, heat, and chemical-resistant, which make them extremely tough and offer ultimate protection that will move your equipment from point A to point B without a scratch.



THE LINE UP:



SPECIALTY PRODUCTS

Our specialty products are well engineered portable workspace solutions. They range from portable desks that set up in minutes to storage chests with metal drawers and dividers to keep all your supplies safe and organized. Whatever your need, whatever the environment, we have a durable solution.

**BLACK BOX
RACKMOUNT CASES**

These lightweight, compact, and double ended cases offer light to medium duty protection and boast significantly better light duty shock performance than the competition. The use of recycled materials in the shell and a sturdy steel frame offer great value while upholding Pelican's industry-leading standards. When you need to be cost-conscious but can't sacrifice performance, a BlackBox is the answer.



VERSAFILL TOTE

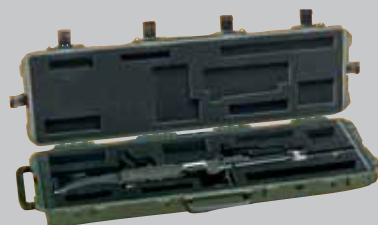
The new Pelican-Hardigg™ VersaFill tote is ideal for warehouse and manufacturing floors. These sturdy containers are designed for the storing and transport of items such as plastic pellets and other bulk components. Pelican-Hardigg's VersaFill totes are virtually indestructible and reusable for all your bulk material handling needs.

VersaFill totes can be easily moved with a pallet jack or forklift and are stackable with lid in place for efficient storage. Optional liner creates a smooth surface for easy removal of fine-grained items. You can now store and transport bulk items safely, securely and worry-free.

472 CASES



472-PWC-M24A2-BLK



472-PWC-M240B-OD



472-PWC-M24-BLK



472-PWC-DW3100 - BLKCOY

SHOTGUN			
CATALOG NUMBER	EXTERIOR DIMENSIONS INTERIOR DIMENSIONS	DESCRIPTION	COLORS
472-PWC-R870	47.20" x 16.50" x 6.70" 44.00" x 14.00" x 6.00"	Securely packs one or two R870 shotguns in iM3200.	■ ■
SNIPER RIFLES			
CATALOG NUMBER	EXTERIOR DIMENSIONS INTERIOR DIMENSIONS	DESCRIPTION	COLORS
472-PWC-M24A2	53.80" x 16.50" x 6.70" 50.50" x 14.00" x 6.00"	Securely packs an M24A2 rifle with scope and accessories in iM3300.	■ ■
MACHINE GUNS			
CATALOG NUMBER	EXTERIOR DIMENSIONS INTERIOR DIMENSIONS	DESCRIPTION	COLORS
472-PWC-M240B	53.80" x 16.50" x 6.70" 50.50" x 14.00" x 6.00"	Safely secures one M240B with room for accessories. Also will hold the M240G with its Infantry Modification Kit in iM3300.	■ ■
472-PWC-M249	53.80" x 16.50" x 6.70" 50.50" x 14.00" x 6.00"	Securely packs one M249 with room for accessories including an M9 Pistol in iM3300.	■ ■
472-PWC-M24	47.20" x 16.50" x 9.20" 44.00" x 14.00" x 8.50"	Securely transports one M24 rifle with room for a night vision scope, M9 pistol and four extra magazines in a iM3300.	■ ■
SOFT BAGS/CASE SET			
CATALOG NUMBER	EXTERIOR DIMENSIONS INTERIOR DIMENSIONS	DESCRIPTION	COLORS
472-PWC-DW3100	39.80" x 16.50" x 6.70" 36.50" x 14.00" x 6.00"	Accompanying a iM3100 is a light weight soft-shelled padded rifle case.	■ ■
472-PWC-DW3200	47.20" x 16.50" x 6.70" 44.00" x 14.00" x 6.00"	Accompanying a iM3200 is a light weight soft-shelled padded rifle case.	■ ■
472-PWC-DW3300	53.80" x 16.50" x 6.70" 50.50" x 14.00" x 6.00"	Accompanying a iM3300 is a light weight soft-shelled padded rifle case.	■ ■
472-PWC-DW3220	47.20" x 16.50" x 9.20" 44.00" x 14.00" x 8.50"	Accompanying a iM3220 is a light weight soft-shelled padded rifle case.	■ ■

PISTOLS			
CATALOG NUMBER	EXTERIOR DIMENSIONS INTERIOR DIMENSIONS	DESCRIPTION	COLORS
472-PPWC-CPC	11.64 X 8.34 X 3.78 10.54 X 6.04 X 3.16	Securely transports 1 compact firearm with room for one magazine in a 1170.	■ ■
472-PWC-M9	11.80" x 9.80" x 4.70" 9.50" x 7.50" x 4.25"	Securely protects one M9 Pistol with room for magazines and accessories in iM2050.	■ ■
472-PWC-M9-2	16.20" x 12.70" x 6.60" 15.00" x 10.50" x 6.00"	Secures up to four M9s, 1911 Pistols or other tactical handguns with room for four additional magazines in iM2200.	■
472-PWC-M9-12	31.30" x 20.40" x 12.20" 29.00" x 18.00" x 10.50"	Securely transports twelve M9 or 1911 Pistols plus twelve magazines in iM2950.	■ ■
472-PWC-M9-20	31.30" x 20.40" x 12.20" 29.00" x 18.00" x 10.50"	Securely transports twenty M9 or 1911 Pistols along with twenty extra magazines in iM2950.	■ ■
SUBMACHINE GUNS			
CATALOG NUMBER	EXTERIOR DIMENSIONS INTERIOR DIMENSIONS	DESCRIPTION	COLORS
472-PWC-MP5	39.80" x 16.50" x 6.70" 36.50" x 14.00" x 6.00"	Securely transports one MP5 gun and includes cavities for accessories and magazines in iM3100.	■ ■
ASSAULT RIFLES			
CATALOG NUMBER	EXTERIOR DIMENSIONS INTERIOR DIMENSIONS	DESCRIPTION	COLORS
472-PWC-M4	39.80" x 16.50" x 6.70" 36.50" x 14.00" x 6.00"	Protects one M4 with or without M203 attached plus seven thirty-round magazines and one M9 Pistol with two spare magazines in iM3100.	■ ■
472-PWC-M4-SF	47.20" x 16.50" x 6.70" 44.00" x 14.00" x 6.00"	Specifically designed for the Special Forces to fit one M4 with SOPMOD accessories, including one extra short barreled M4 upper and one M9 Pistol with tactical light in iM3200.	■ ■
472-PWC-M16-3200	47.20" x 16.50" x 6.70" 44.00" x 14.00" x 6.00"	Securely transport one M16 rifle and one M4 rifle with room for seven magazines and accessories in iM3200.	■ ■
472-PWC-M16	53.80" x 16.50" x 6.70" 50.50" x 14.00" x 6.00"	Holds one M16 or M4 with or without M203 by quick removal of foam spacers. With plenty of room to spare for seven thirty-round magazines, an M9 Pistol, and accessories in iM3300.	■ ■
472-PWC-SCAR	53.80" x 16.50" x 6.70" 50.50" x 14.00" x 6.00"	Securely transport one SCAR rifle, space for extra barrel, scope and seven magazines in iM3300.	■ ■
472-M4-M16-4	44.80" x 34.00" x 18.50" N/A	Secures with locking bars, four fully equipped M4s or M16s or any combination (two M4s and two M16s). Container can also be used as a lockable rifle rack to keep all weapons safe and secure.	■ ■
472-M4-M16-6	45.40" x 24.00" x 18.5" N/A	Security minded storage and transport for a 6 pack of M16s, or any combination of M16s and M4s, impervious to damage, water, dust, salt. Converts into 2 open, locked and secure weapons racks.	■ ■
472-M4-M16-8	44.80" x 34.00" x 26.5" N/A	Security minded storage and transport for a 8 pack of M16s, or any combination of M16s and M4s, impervious to damage, water, dust, salt. Converts into 2 open, locked and secure weapons racks.	■ ■
472-M4-M16-12	45.40" x 24.00" x 26.5" N/A	Security minded storage and transport for a 12 pack of M16s, or any combination of M16s and M4s, impervious to damage, water, dust, salt. Converts into 2 open, locked and secure weapons racks.	■ ■



472-PWC-M9-BLK



472-PWC-MP5-BLK



472-PWC-M4-BLK



472-M4-M16-8-137

SINGLE LID CASES



Protect and transport anything from LCD monitors to aircraft parts. One-piece construction molded from lightweight, high-impact polyethylene with patented metal inserts for added strength.

Associated Press / Francis Sprecker

TRUNK

STANDARD FEATURES

- Comfort Grip Handles
- Positive anti-shear interlocks, which prevent lid separation after impact
- Reinforced corners and edges for additional impact protection
- Molded-in ribs and corrugations for secure, non-slip stacking, columnar strength and added protection
- Recessed hardware for extra protection
- Airtight lid gasket and PRV (pressure relief valve)

OPTIONS

- No foam or 2", 2 lb polyethylene black foam
- Casters or no Casters (depending on model)

CATALOG NUMBER	EXTERIOR DIMENSIONS	INTERIOR DIMENSIONS	BASE DEPTH	LID DEPTH/TYPE	SPECIAL FEATURES
AL2624-1205-RP	29.06" x 27.00" x 20.69"	26.06" x 24.00" x 16.93"	11.87"	5.06"/ Hinged Lid	casters left side
AL3018-0905-RP	32.75" x 20.87" x 16.43"	29.75" x 17.87" x 14.62"	9.37"	5.25"/ Hinged Lid	std edge casters
AL3018-1505-RP	32.75" x 20.87" x 21.93"	29.75" x 17.87" x 20.12"	14.87"	5.25"/ Hinged Lid	std edge casters
AL3424-1205-RP	37.25" x 27.18" x 19.44"	34.25" x 24.18" x 17.25"	12.00"	5.25"/ Hinged Lid	std edge casters
AL3418-1005-RP	37.18" x 20.87" x 17.31"	34.18" x 17.87" x 15.37"	10.12"	5.25"/ Hinged Lid	std edge casters
AL3424-0805-RP	37.25" x 27.18" x 15.44"	34.25" x 24.18" x 13.25"	8.00"	5.25"/ Hinged Lid	casters left side
AL3620-1710-RP	38.87" x 22.87" x 29.46"	35.87" x 19.87" x 27.27"	17.12"	10.15"/ Hinged Lid	casters left side
AL4024-1305-RP	42.87" x 27.31" x 20.19"	39.87" x 24.31" x 18.00"	12.75"	5.25"/ Hinged Lid	std edge casters
AL4824-1404-RP	51.62" x 27.62" x 21.36"	48.62" x 24.62" x 17.67"	13.80"	3.87"/ Hinged Lid	casters bottom nonstackable
AL4824-1604-RP	51.62" x 27.62" x 23.36"	48.62" x 24.62" x 19.67"	15.80"	3.87"/ Hinged Lid	casters bottom nonstackable
AL5424-2306-RP	56.87" x 26.93" x 33.75"	53.87" x 23.93" x 28.87"	22.75"	6.12"/ Hinged Lid	casters bottom nonstackable

FLAT

STANDARD FEATURES

- Comfort Grip Handles
- Positive anti-shear interlocks, which prevent lid separation after impact
- Reinforced corners and edges for additional impact protection
- Molded-in ribs and corrugations for secure, non-slip stacking, columnar strength and added protection
- Recessed hardware for extra protection
- Airtight lid gasket and PRV (pressure relief valve)

OPTIONS

- No foam or 2", 2 lb polyethylene black foam
- Casters or no Casters (depending on model)

CATALOG NUMBER	EXTERIOR DIMENSIONS	INTERIOR DIMENSIONS	BASE DEPTH	LID DEPTH/TYPE	SPECIAL FEATURES
AL1616-0505-RP	18.75" x 18.88" x 12.19"	15.75" x 15.88" x 10.54"	5.42"	5.12"/ Hinged Lid	no casters available
AL2013-0903-RP	22.87" x 16.00" x 13.94"	19.87" x 13.00" x 12.25"	9.25"	3.00"/ Hinged Lid	no casters available
AL3022-0705-RP	33.00" x 25.18" x 13.97"	30.00" x 22.18" x 12.18"	7.00"	5.18"/ Hinged Lid	casters bottom nonstackable
AL5415-1026-RP	57.00" x 18.88" x 37.50"	54.00" x 15.88" x 35.40"	10.00"	25.38"/ Removable Lid	standard caster option





Use of the military image does not imply or constitute Department of Defense endorsement.

LONG

STANDARD FEATURES

- Comfort Grip Handles
- Positive anti-shear interlocks, which prevent lid separation after impact
- Reinforced corners and edges for additional impact protection
- Molded-in ribs and corrugations for secure, non-slip stacking, columnar strength and added protection
- Recessed hardware for extra protection
- Airtight lid gasket and PRV (pressure relief valve)

OPTIONS

- No foam or 2", 2 lb polyethylene black foam
- Casters or no Casters (depending on model)

CATALOG NUMBER	EXTERIOR DIMENSIONS	INTERIOR DIMENSIONS	BASE DEPTH	LID DEPTH/TYPE	SPECIAL FEATURES
AL5616-0604-RP	59.43" x 19.25" x 12.76"	56.43" x 16.25" x 10.07"	5.87"	4.20"/ Hinged Lid	no casters available
AL6912-1003-RP	72.37" x 15.00" x 16.28"	69.37" x 12.00" x 14.09"	10.49"	3.60"/ Hinged Lid	no casters available



CUBE

STANDARD FEATURES

- Comfort Grip Handles
- Positive anti-shear interlocks, which prevent lid separation after impact
- Reinforced corners and edges for additional impact protection
- Molded-in ribs and corrugations for secure, non-slip stacking, columnar strength and added protection
- Recessed hardware for extra protection
- Airtight lid gasket and PRV (pressure relief valve)

OPTIONS

- No foam or 2", 2 lb polyethylene black foam
- Casters or no Casters (depending on model)

CATALOG NUMBER	EXTERIOR DIMENSIONS	INTERIOR DIMENSIONS	BASE DEPTH	LID DEPTH/TYPE	SPECIAL FEATURES
AL2624-1805-RP	29.06" x 27.00" x 26.62"	26.06" x 24.00" x 22.87"	17.81"	5.06"/ Hinged Lid	casters left side
AL3834-1617-RP	41.12" x 37.12" x 38.82"	38.12" x 34.12" x 33.00"	15.75"	17.25"/ Removable Lid	no casters available

> AVAILABLE COLORS FOR TRUNK, FLAT, LONG AND CUBE CASES

Gray - 133 Fed Std# 26270	Tan - 250 Fed Std# 20372	Blue - 135(It) Pantone# 292U	White - 132 Fed Std# 27925	Yellow - 136 Pantone# 012U	Green - 138(forest) Fed Std# 24052	Orange - 134 Fed Std# 12197
Yellow - 131 Fed Std# 23538	Maroon - 197 Pantone# 202U	Blue - 101(dk) Fed Std# 25052	Black - 032 Fed Std# 27040	Red - 130 Fed Std# 21105	Olive Drab - 137 Fed Std# 34096	Purple - 129 Pantone# 245U

Note: Some options are not available on all case sizes and availability is subject to change at manufacturer's discretion. Case colors/options may differ slightly from printed versions.

MOBILE MASTER™

STANDARD FEATURES

- Comfort Grip Handles
- Positive anti-shear interlocks, which prevent lid separation after impact
- Reinforced corners and edges for additional impact protection
- Molded-in ribs and corrugations for secure, non-slip stacking, columnar strength and added protection
- Recessed hardware for extra protection
- Airtight lid gasket and PRV (pressure relief valve)

OPTIONS

- No foam or 2", 2 lb polyethylene black foam
- Casters or no Casters (depending on model)

CATALOG NUMBER	EXTERIOR DIMENSIONS	INTERIOR DIMENSIONS	SPECIAL FEATURES	COLORS
472-463L-MM24	51.60" x 27.40" x 23.40"	48.6 x 24.4 x 19.6	• 24 cases fit on 463L pallet • Airtight and water tight • Black cobalt hardware • 8 comfort grip handles	
472-463L-MM36	34.40" x 27.40" x 23.40"	31.4 x 24.4 x 19.6	• 36 cases fit on 463L pallet • Airtight and water tight • Black cobalt hardware • 4 comfort grip handles	



SPECIALTY PRODUCTS

Erect a command center virtually anywhere. Modular designs allow for multiple configurations constructed with the same quality and strength as our cases.



472-FLD-DESK-TA-137
Single Field Desk



472-FLD-DESK-DD-137
Double Duty™ Field Desk



472-ADMIN-DESK-137
Administrative Field Desk

SPECIALTY PRODUCTS - FIELD DESKS | OFFICE SUPPORT

CATALOG NUMBER	COLLAPSED FORM	EXTENDED FORM	SPECIAL FEATURES*	COLORS
472-FLD-DESK-TA	30.70" x 21.00" x 28.50"	61.40" x 28.50" x 28.50"	<ul style="list-style-type: none"> 1 Large work surface, chair, and drawers 6 Drawers: 2 shallow (padlock for extra security), 2 deep, 2 file sizes 1 Chair: load rated to 300 lbs. (136 kg each) Airtight and watertight 	
472-FLD-DESK-DD	34.00" x 24.90" x 28.50"	102.00" x 28.50" x 28.50"	<ul style="list-style-type: none"> 2 Large desk surfaces, with rolling casters 6 Drawers: 2 shallow (padlock for extra security), 2 deep, 2 file sizes 2 Casters 2 Chairs: Load rated to 300 lbs. (136 kg each) Airtight and watertight 	
472-ADMIN-DESK	30.80" x 21.00" x 28.50"	N/A	<ul style="list-style-type: none"> 1 detachable desk, chair, and drawers 6 Drawers: 2 shallow (padlock for extra security), 2 deep, 2 file sizes 1 Chair: load rated to 300 lbs. (136 kg each) Airtight and watertight 	



472-TANKM-D-2-032
Tankmate



472-BKSH-100-137
Bookshelf



472-MEDLEG-SET
Medical Leg Set

SPECIALTY PRODUCTS - TANK STORAGE | BOOKSHELF | MEDICAL LEG SET

CATALOG NUMBER	COLLAPSED FORM	EXTENDED FORM	SPECIAL FEATURES*	COLORS
472-TANKM-D-2	26.10" x 14.90" x 5.40"	N/A	<ul style="list-style-type: none"> Impervious to temperature and impact Molded in Handles Holds two D 95 GL tanks 	
472-BKSH-100	42.80" x 27.30" x 20.80"	N/A	<ul style="list-style-type: none"> Six shelves for ample storage, three small (9" x 12.5" x 12.25") and three large compartments (14' x 12.5" x 12.25") Casters for transport Weatherproof and watertight • Removable lid 	
472-MEDLEG-SET	N/A	N/A	<ul style="list-style-type: none"> Leg Set provides a stable, strong table system Upper slot holds 2" lid, lower slot holds 9" lid Rubber lined for case protection 	

SPECIALTY PRODUCTS

RACK MOUNT CASES



iMTRLK-30000
Trunklocker



472-FTLK-LG-137
Footlocker



472-MEDCHEST3-137
Medchest 3



472-MEDCHEST3-4D-137
Medchest 4 drawer



472-MEDCHEST3-8D-137
Medchest 8 drawer



472-FTLK-1-137
Footlocker



472-TRLK-S-137
Military trunklocker



472-MED-4-TOTE-137
Med 4 tote



BlackBox-3U



BlackBox-4U



BlackBox-5U



BlackBox-7U



BlackBox-9U



BlackBox-11U



BlackBox-14U

SPECIALTY PRODUCTS-MEDICAL CHEST | STORAGE LOCKERS

CATALOG NUMBER	EXTERIOR DIMENSIONS	INTERIOR DIMENSIONS	SPECIAL FEATURES*	COLORS
iMTRLK	36.27" x 18.50" x 19.56"	32.88" x 15.00" x 17.75"	• Storage locker • Extra-deep storage cavity • Two press & pull latches • Injection molded outer shell • Two organization trays • Molded-in stacking ribs • Water resistant	
472-FTLK-LG	33.00" x 17.00" x 17.00"	29.00" x 14.00" x 15.00"	• 2 wheels • 2 black trays • Spring loaded butterfly latches • Airtight and watertight	
472-MEDCHEST3	32.75" x 20.87" x 12.61"	30.00" x 18.00" x 11.00"	• Storage chest • 2 wheels • Made from fire retardant material • Spring loaded butterfly latches • 3x5" (7.6 x 12.7cm) Card holder • Airtight and watertight	
472-MEDCHEST3-4D	32.75" x 20.87" x 12.61"	N/A	• Four-drawer case with full extension sliding drawers • 2 wheels • Spring loaded butterfly latches • Full-extension ball-bearing slides • Made from fire retardant material • Airtight and watertight • Customizable divider system	
472-MEDCHEST3-8D	32.75" x 20.87" x 12.61"	N/A	• Eight-drawer case with full extension sliding drawers • 2 wheels • Spring loaded butterfly latches • Full-extension ball-bearing slides • Made from fire retardant material • Airtight and watertight • Customizable divider system • One lockable drawer • Removable stainless-steel work tray • Comfort Grip Handles	
472-FTLK-1	33.00" x 17.00" x 14.00"	29.00" x 14.00" x 12.00"	• Gasketed tongue and groove closure • Reinforced corners • Positive anti-shear latches • Locking latch • Plastic handles • Stackable design.	
472-TRLK-S	24.00" X 20.12" X 12.38"	21.00" x 17.00" x 11.00"	• Padlockable hasp and molded in carrying/lifting ledges at each end.	
472-MED-4-TOTE	32.75" x 20.87" x 12.61"	29.00" x 18.00" x 10.80"	• Removable lid • Comfort grip handles • Edge casters for transport • Pressure equalization vent • Two tote sizes for medical items • 4 removable polyethylene totes	

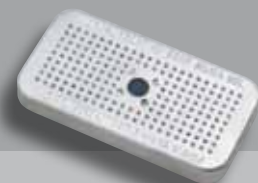
RACK MOUNT CASES-BLACKBOX

CATALOG NUMBER	U-SIZE	LID INTERIOR DIM. (FRONT)	LID INTERIOR DIM. (BACK)	RACK L X W X H	EXTERIOR DIMENSIONS	COLORS	STANDARD FEATURES
BlackBox-3U	3U	2.2"	5.2"	24.00" x 19.00" x 5.25"	38.50" x 24.60" x 11.40"		• Engineered racks provide a secure and mobile electronics enclosure up to 100 pounds
BlackBox-4U	4U	2.2"	5.2"	24.00" x 19.00" x 7.00"	38.50" x 24.60" x 13.10"		• Shock mounts provide 2" (5.1cm) of sway space to isolate equipment
BlackBox-5U	5U	2.2"	5.2"	24.00" x 19.00" x 8.75"	38.50" x 24.60" x 14.90"		• Molded-in rib design provides secure stacking and interlock
BlackBox-7U	7U	2.2"	5.2"	24.00" x 19.00" x 12.25"	38.50" x 24.60" x 18.40"		• Patented wide-design Comfort Grip Handles make lifting easy
BlackBox-9U	9U	2.2"	5.2"	24.00" x 19.00" x 15.75"	38.50" x 24.60" x 21.90"		• Black hardware is long-lasting and fastens securely
BlackBox-11U	11U	2.2"	5.2"	24.00" x 19.00" x 19.25"	38.50" x 24.60" x 25.40"		• Automatic pressure relief valve
BlackBox-14U	14U	2.2"	5.2"	24.00" x 19.00" x 24.50"	38.50" x 24.60" x 30.60"		• Airtight and watertight
							• Lightweight and compact
							• 2 wheels

VERSAFILL™ TOTE



MISCELLANEOUS



SEE THE FULL LINE OF PRODUCTS AT:

PELICAN.COM

VERSAFILL TOTE

CATALOG NUMBER	EXTERIOR DIMENSIONS	INTERIOR DIMENSIONS	LINER INCLUDED
VERSAFILL-E	45.0" x 44.0" x 45.0"	38.70" x 38.70" x 36.60"	No
VERSAFILL-L	45.0" x 44.0" x 45.0"	38.70" x 38.70" x 36.60"	Yes

FEATURES

- Virtually Indestructible
- Reusable
- Chemically Inert
- Safe to Ship
- Optional Black Liner
- Manufactured in the USA
- Pallet Jack / Forklift Provisions
- Stackable
- Includes Lid

VersaFill containers are available in black, blue, red, grey, orange, yellow, olive drab and tan

PELI™ DESICCANT (SILICA GEL)

CAT. NO. 1500D

- Peli Desiccant Silica Gel "drinks" dampness, prevents condensation from trapped air when cases are opened in damp, high humidity climates.
- Fits all Pelican Cases
 - Size: 2" x 4"



TSA LOCK

CAT. NO. 1506TSA

- Special TSA accepted lock
- TSA personnel can safely lock and unlock
- You can set hundreds of combinations
- Fits all Pelican Cases

QUICK MOUNTS (SET OF 4)

CAT. NO. 1507 | PELI™

- For mounting special equipment
- Fits all Storm Cases
- Color: Black



THE PELICAN™ FLOAT

CAT. NO. 100

Marker recovery system. The Pelican Float is a reusable buoy made of structural foamed resin and weighs only 16 oz. Includes over 100 feet of polyethylene 225 lb. test line and a 6 oz. non-drag dispatchable anchor.



PELICAN TOUGH LIGHTING TOOLS

- Safety approved lights for hazardous areas
- Tactical lights for military and law enforcement
- Specialized lights for fire and rescue operations
- Submersible lights for diving
- Headlamps



PELICAN LED AREA LIGHTING

- Up to 56 hours of light
- Lightweight
- Battery powered
- Breakthrough LED technology
- Portable
- Rechargeable
- Completely collapsible



PELICAN - HARDIGG™ SINGLE LID CASES

- Rotational Molding Technology
- Recessed hardware
- Comfort Grip Handles
- Available airtight/watertight designs
- Over 300 sizes
- Built-in skid runners option available on select models
- Mobile Military solutions for Medical, Information Technology, Office, Armory, and Transport Logistics
- Reinforced corners and edges for impact protection



PELICAN - HARDIGG™ RACK MOUNT CASES

- Over 140 models from 3U-26U for rack depths of 19"-33" inches (48-83 cm)
- Rotational Molding Technology for secure server transport
- Controls impact forces from 15 Gs to 120 Gs
- Shock mounts isolate vibration and impacts
- Designed to meet ANSI/EIA-310C for universal rack mounting hole pattern
- Removable rack systems for use in the field (select models)



PELICAN - HARDIGG™ ADVANCED CASE SOLUTIONS™

- Mission Critical Custom Cases
- Project evaluation
- Prototype, first articles, and testing
- Complete design and engineered custom solutions
- Manufacturing and Integration



PELICAN LIMITED LIFETIME GUARANTEE OF EXCELLENCE

Pelican Products, Inc. guarantees its products for a lifetime against breakage or defects in workmanship. Pelican™ injection molded cases are guaranteed to be watertight to a depth of 3.3 feet (1 meter) for 30 minutes (IP 67) if properly closed with undamaged o-ring in place unless otherwise stated. To the extent permitted by law, Pelican's liability is limited to the case and not its contents or foam. All warranty claims of any nature are barred if the container has been altered, damaged or in any way physically changed, or subjected to abuse, misuse, negligence or accident.

In Australia: See <http://www.pelican.com/warranty>

For complete warranty details, see <http://www.pelican.com/warranty>.

Lifetime Guarantee does not cover Roto Molded cases, AALG products or fabric portion of backpacks.

PELICAN 1 YEAR LIMITED WARRANTY FOR ROTO MOLDED CONTAINERS

Pelican Products, Inc. ("Pelican") warrants to the original purchaser of its rotationally molded containers that its containers will be free of defects in materials and workmanship for a period of one year from the date of invoice. Such warranty does not cover any associated hardware including closure hardware, retractable handles, wheels, and fasteners, which Pelican warrants against defects in materials and workmanship for a period of 90 days from the invoice date. To the extent permitted by law, Pelican's liability is limited to the case and not its contents or foam. All warranty claims of any nature are barred if the container has been altered, damaged or in any way physically changed, or subjected to abuse, misuse, negligence or accident.

In Australia: See <http://www.pelican.com/warranty>

For complete warranty details, see <http://www.pelican.com/warranty>.

U.S.A.

CALIFORNIA

23215 Early Avenue
Torrance, CA 90505
Tel: 310.326.4700
800.473.5422
Fax: 310.326.3311
www.pelican.com

MASSACHUSETTS

147 North Main Street
South Deerfield, MA 01373
Tel: 800.542.7344
Fax: 413.665.8330
www.pelican.com

INTERNATIONAL

EUROPE, MIDDLE EAST AND AFRICA

Peli Products, S.L.U.
c/ Provença, 388, Planta 7
08025 - Barcelona, Spain
Tel: +34.934.674.999
Fax: +34.934.877.393
www.peli.com

JAPAN

Pelican Products K.K.
Nisso 22 Bldg 9F
1-11-10 Azabu Dai
Minato ward Tokyo
106-0041 Japan
Tel: +81.33.585.9100
Fax: +81.33.585.9109
www.pelican.com/jp

CANADA

Pelican Products ULC
10221-184th Street
Edmonton, Alberta
T5S 2J4 Canada
Tel: +780.481.6076
Fax: +780.481.9586
www.pelican.ca

AUSTRALIA

Pelican Products Australia
Suite 2.33 West Wing
Platinum Building
4 Ilya Av
Erina NSW 2250
Tel: +612.4367.7022
Fax: +612.4367.7066
www.pelicanaustralia.com

CHINA

Pelican Products China Representative Office
Pine City Building, Room 1026
777 Zhaojiabang Road
Shanghai, China 200032
Tel: +86.21.64189685
Fax: +86.21.64189679
www.pelican.com/cn

KOREA

Pelican Products Korea Ltd
#909 Hyundai 41 Tower, 917-9, Mok-dong,
Yangchon-gu, Seoul, Korea
Tel: +82.2.6092.4700
Fax: +82.2.6792.4700
www.pelican.com/ko

INDIA

Pelican Products and Services India Pvt. Ltd
Level "4", Augusta Point, Sector-53, Golf Course Road
Gurgaon 122002 Haryana, India
Tel: +91.124.4354148
Fax: +91.124.4354001
www.pelican.com

SE ASIA and rest of ASIA (Hong Kong, Macau, Taiwan, Sri Lanka)

Pelican Products Singapore Pte Ltd
30 Merchant Road, #02-08 Riverside Point
Singapore 058282
Phone: +65 64385418
www.pelican.com

LATIN AMERICA

23215 Early Avenue
Torrance, California 90505 USA
Tel: +1.310.326.4700 x 1462
Fax: +1.310-325.5740



©2013 Pelican Products, Inc. All trademarks are registered and/or unregistered trademarks of Pelican Products, Inc., its subsidiaries and/or affiliates. iPhone® and iPod are registered trademarks of Apple Inc. VELCRO® is a registered trademark of Velcro Industries B.V. BlackBerry® is a registered trademark of Research In Motion Limited T-Mobile® is a registered trademark of Deutsche Telekom AG CORPORATION Motorola is a registered trademark of Motorola, Inc. Nokia is a registered trademark of Nokia Corporation

DISTRIBUTED BY:



CASE CATALOG

PELICAN™ CASE ■ PELICAN™ STORM CASE™ ■ PELICAN-HARDIGG™ SELECT SETS

SEE ALL OF OUR NEW PRODUCTS AT PELICAN.COM
COOLERS • BACKPACKS • LIGHTING PRODUCTS
MOBILE DEVICE CASES • PORTABLE LED LIGHTING