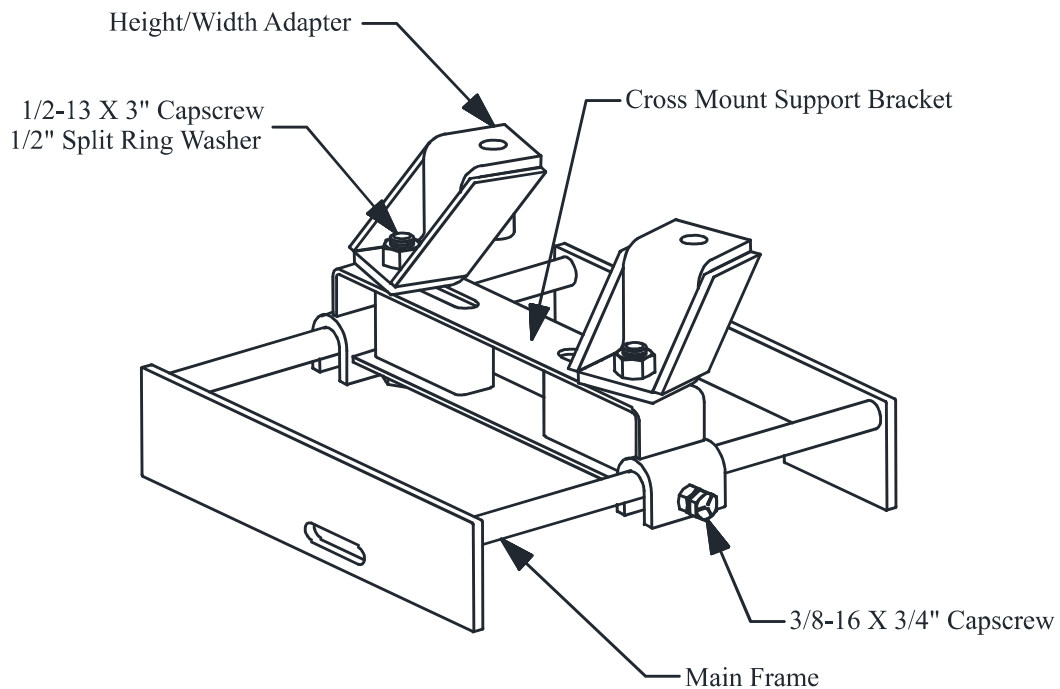
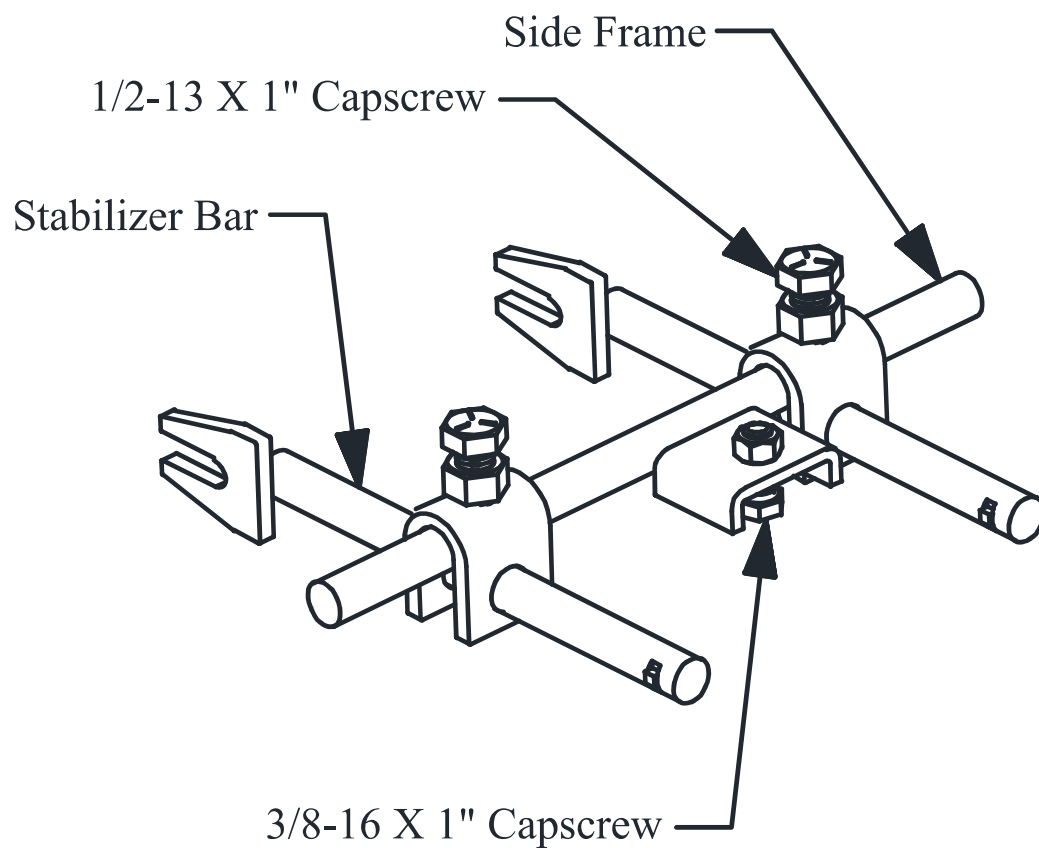


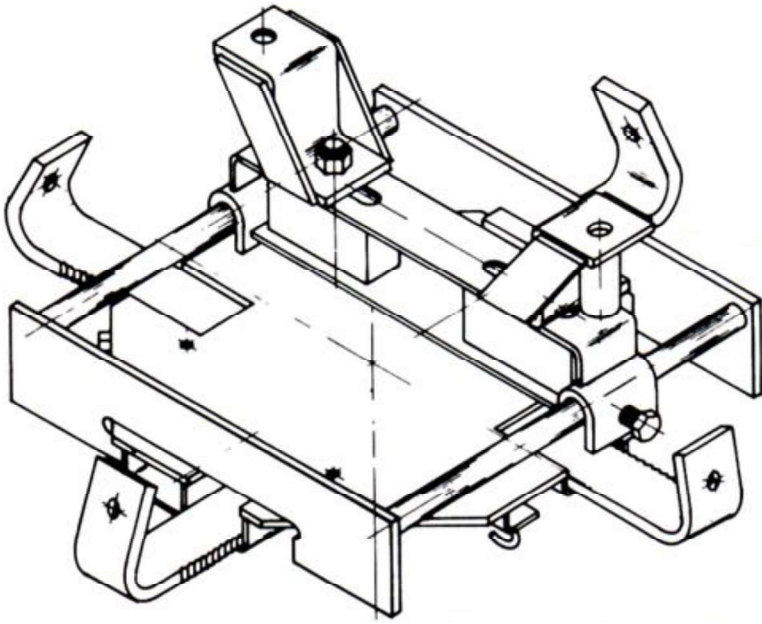
# Component Identification



## Transmission/Transfer Case Assembly Adapter



## Multi-Purpose Adapters



## Transmission/Transfer Case Assembly Adapter

The Transmission/Transfer Case Assembly Adapters are designed to make an easy one man job of removing, transporting, positioning and installing the transmission and transfer case assembly from a four wheel drive vehicle.

When using these adapters it is not necessary to separate the transfer case from the transmission.

1. This unique capability eliminates the need to manually handle the transfer case.
2. It also saves considerable time per transmission job. The time and labor savings become important for smaller jobs such as replacement of a front pump seal, converter, or flywheel.
3. In some instances, interference from exhaust system components can be overcome so they do not have to be removed.